




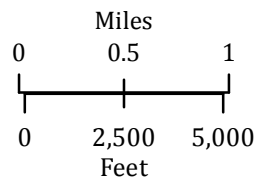


Stouts Creek
OR-732S-000090
Infrared Interpretation
Imagery Date:
8/12/2015 0052 hrs

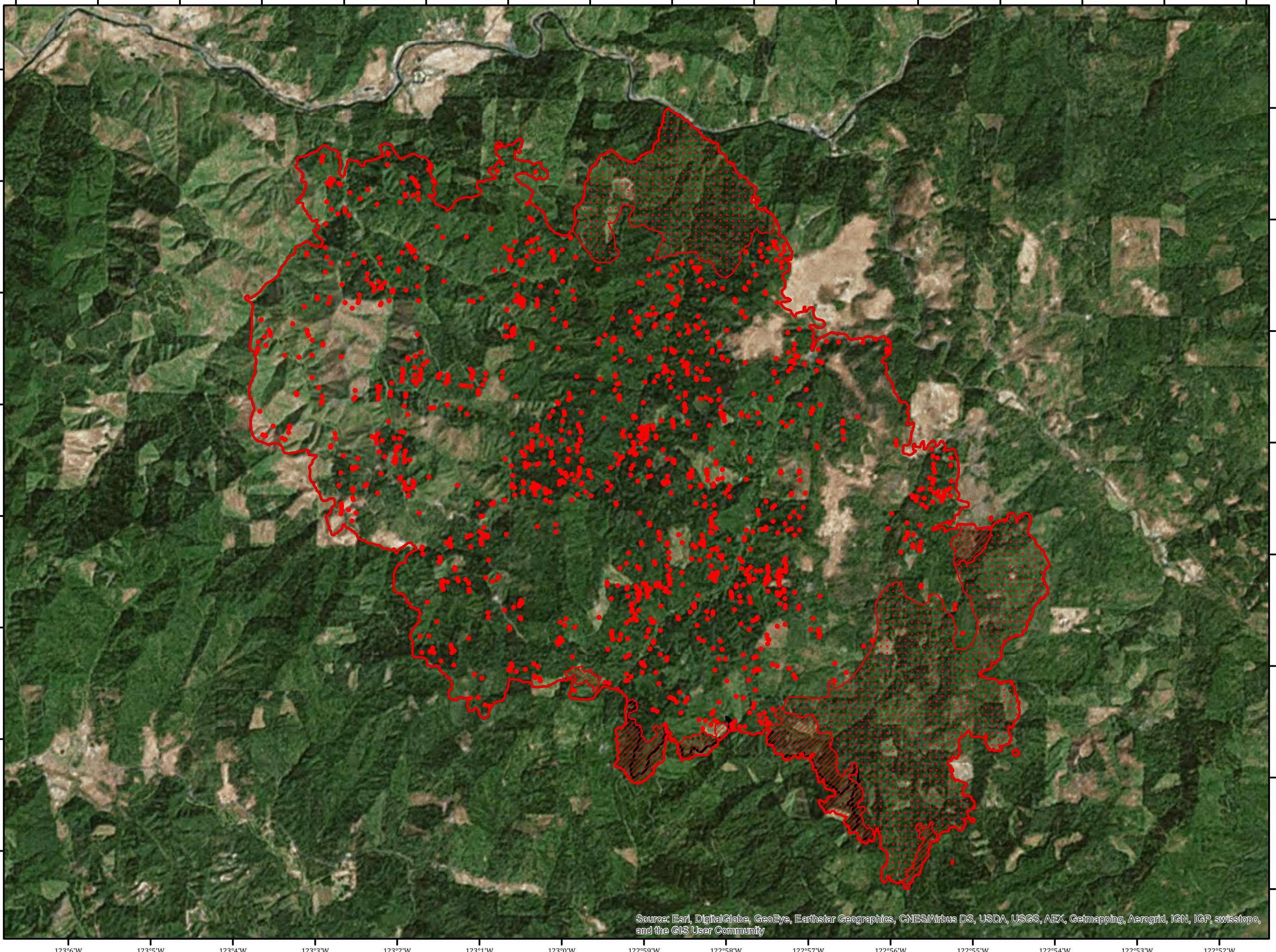
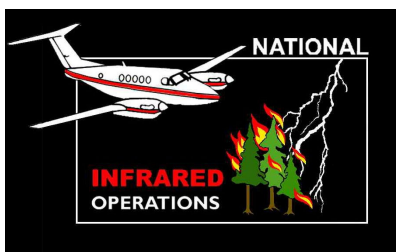
-  Heat Perimeter
-  Intense Heat
-  Scattered Heat
-  Isolated Heat Sources
-  Previous Heat Perimeter



IRIN: Jacob Rosenberg
Map produced:
08/12/2015 0216 hrs
Interpreted IR Perimeter: 23,515 Acres
Change in Heat Perimeter: 198 Acres



Datum: North American 1983



Source: Esri, DigitalGlobe, GeoEye, Earthstar Geographics, CNES/Airbus DS, USDA, USGS, AEX, Getmapping, Aerogrid, IGN, IGP, swisstopo, and the GIS User Community