

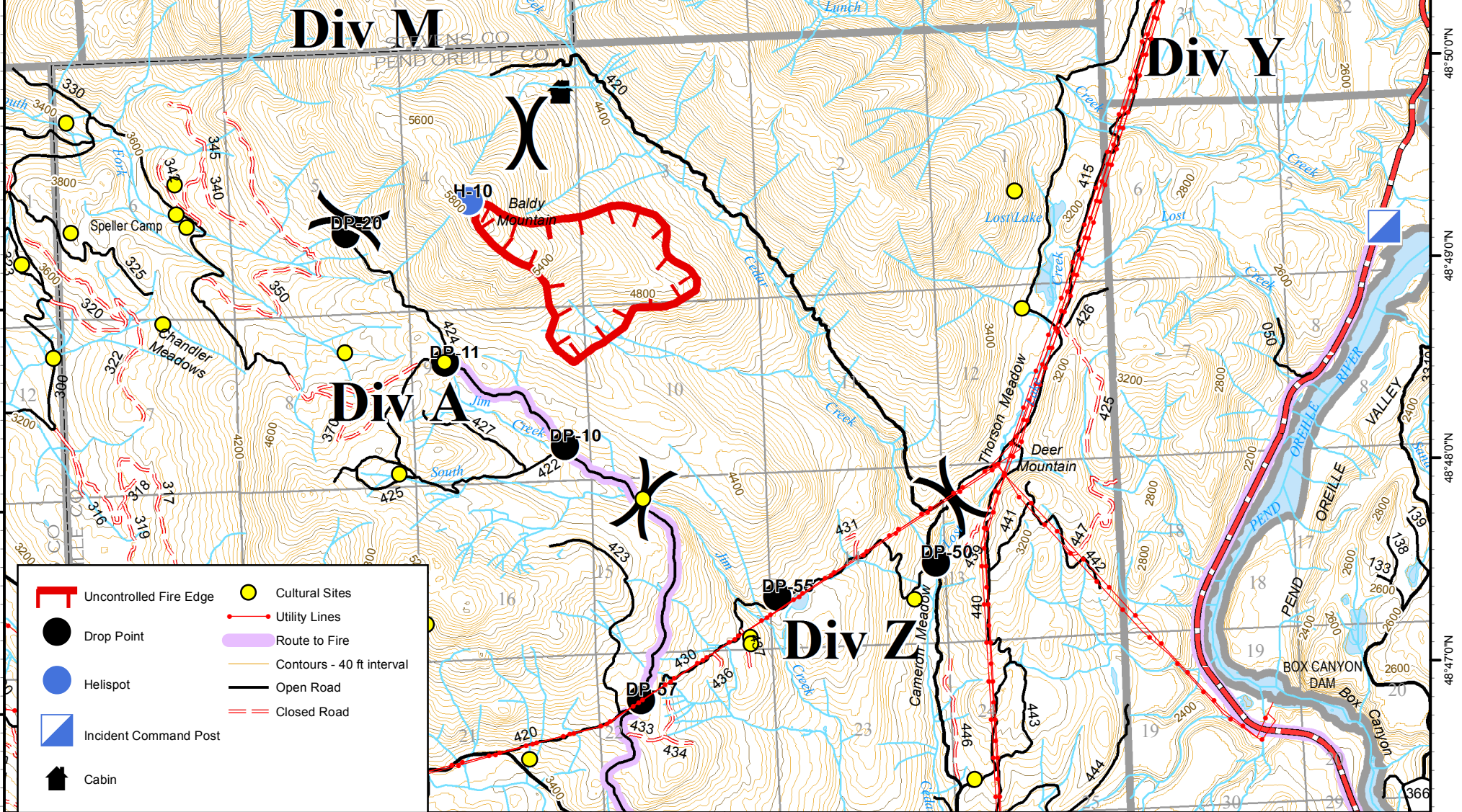
117°34'0"W 117°33'0"W 117°32'0"W 117°31'0"W 117°30'0"W 117°29'0"W 117°28'0"W 117°27'0"W 117°26'0"W 117°25'0"W 117°24'0"W

**Baldy**  
 WA-COF-001003  
 221-JEZ

**IAP Map**  
 August 4th 2015  
 342 acres

Perimeter as of 08/3/2015 @ 1800

CS 8/3/2015 2054



Uncontrolled Fire Edge	Cultural Sites
Drop Point	Utility Lines
Helispot	Route to Fire
Incident Command Post	Contours - 40 ft interval
Cabin	Open Road
	Closed Road

48°51'0"N  
48°50'0"N  
48°49'0"N  
48°48'0"N  
48°47'0"N