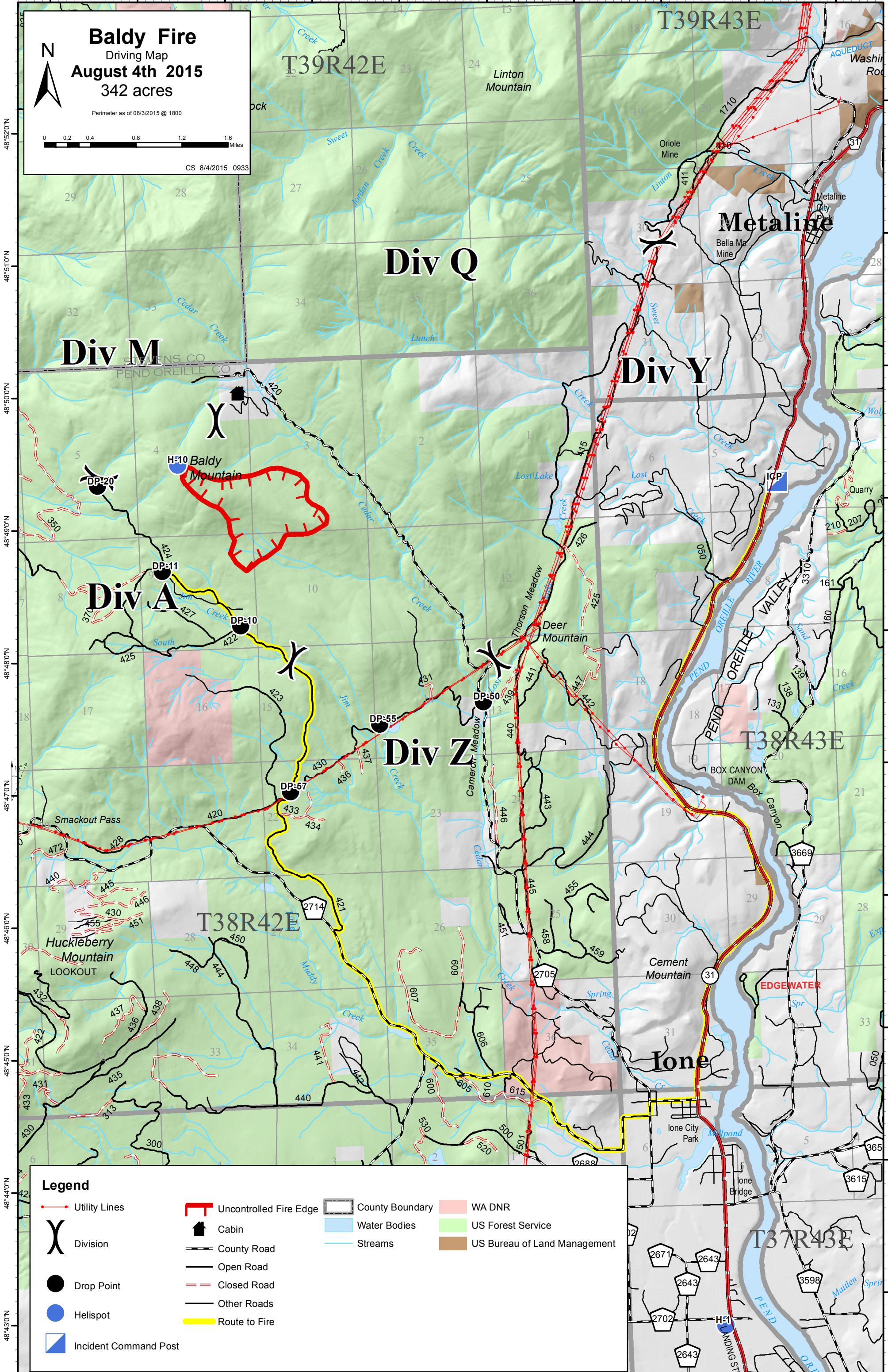


117°32'0"W 117°31'0"W 117°30'0"W 117°29'0"W 117°28'0"W 117°27'0"W 117°26'0"W 117°25'0"W 117°24'0"W 117°23'0"W

**Baldy Fire**  
 Driving Map  
**August 4th 2015**  
 342 acres  
 Perimeter as of 08/3/2015 @ 1800

CS 8/4/2015 0933



**Legend**

Utility Lines	Uncontrolled Fire Edge	County Boundary	WA DNR
Division	Cabin	Water Bodies	US Forest Service
Drop Point	County Road	Streams	US Bureau of Land Management
Helispot	Open Road	Closed Road	
Incident Command Post	Other Roads	Route to Fire	