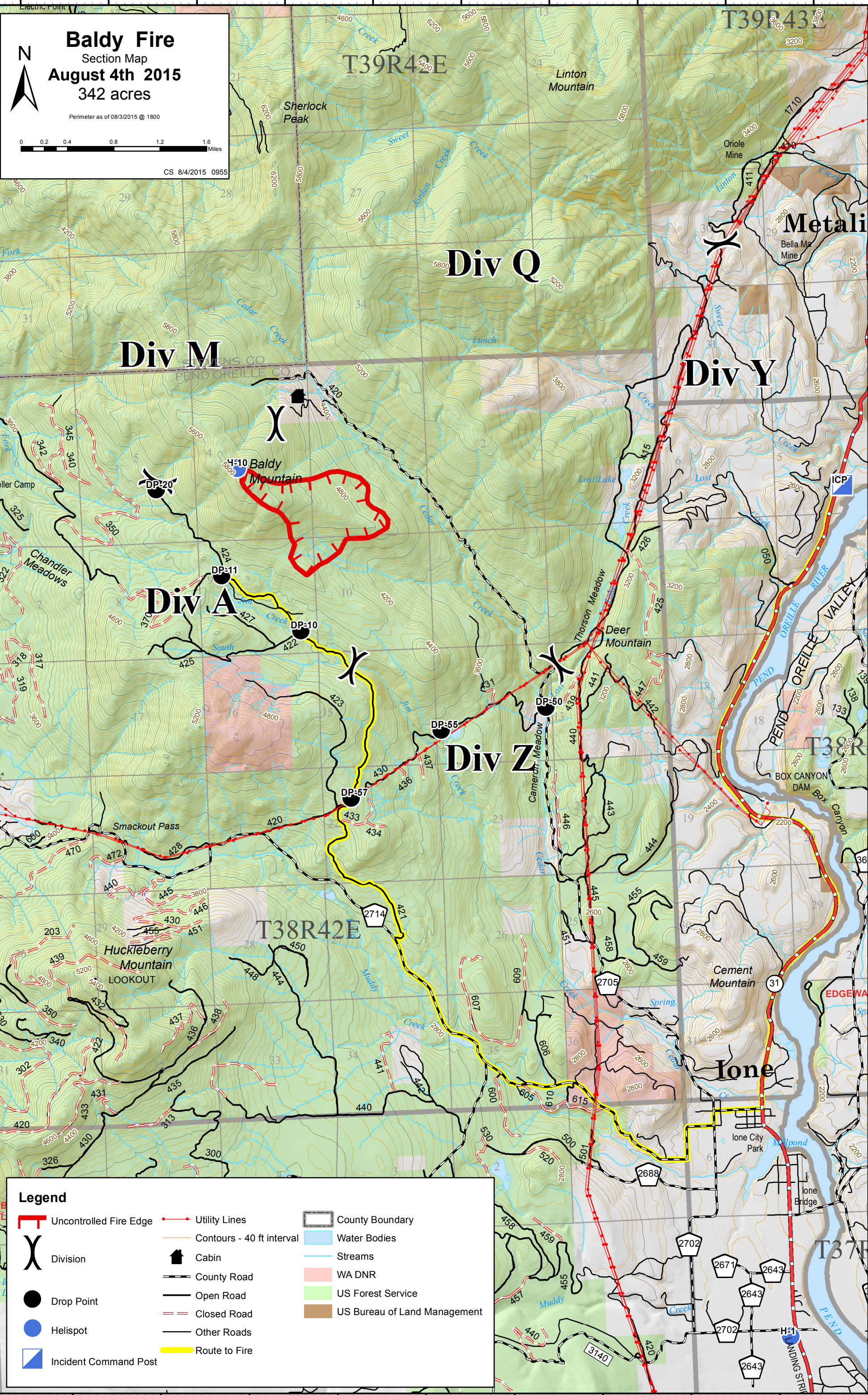


117°33'0"W 117°32'0"W 117°31'0"W 117°30'0"W 117°29'0"W 117°28'0"W 117°27'0"W 117°26'0"W 117°25'0"W 117°24'0"W



Baldy Fire
 Section Map
August 4th 2015
 342 acres

Perimeter as of 08/3/2015 @ 1800

CS 8/4/2015 0955

0 0.2 0.4 0.8 1.2 1.6 Miles

N

Legend

| | | |
|------------------------|---------------------------|------------------------------|
| Uncontrolled Fire Edge | Utility Lines | County Boundary |
| Division | Contours - 40 ft interval | Water Bodies |
| Drop Point | Cabin | Streams |
| Helispot | County Road | WA DNR |
| Incident Command Post | Open Road | US Forest Service |
| | Closed Road | US Bureau of Land Management |
| | Other Roads | |
| | Route to Fire | |