

117°32'0"W 117°31'0"W 117°30'0"W 117°29'0"W 117°28'0"W

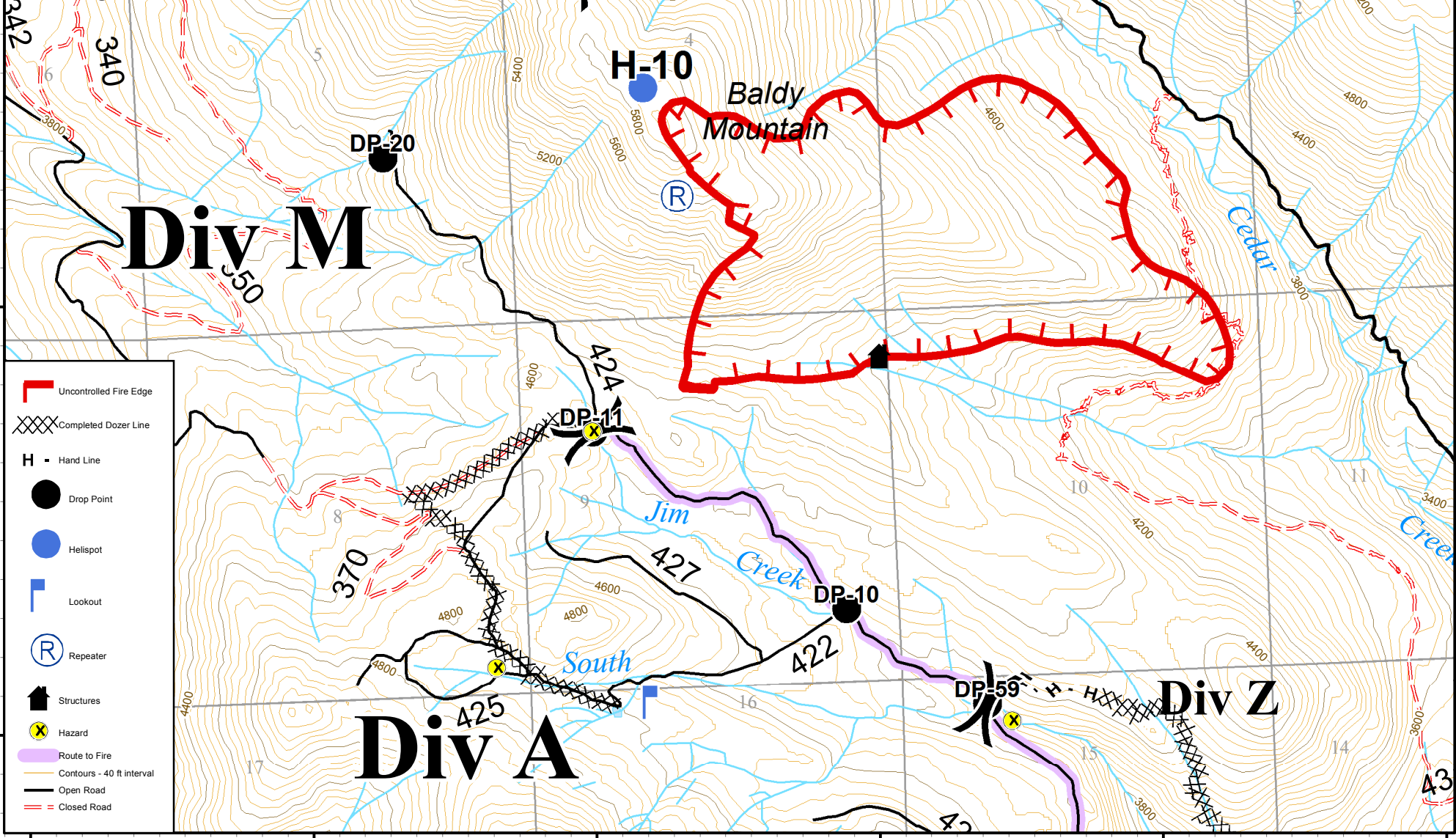
48°50'0"N
48°49'0"N
48°48'0"N

Baldy
 WA-COF-001003
 221-JEZ

IAP Map
 August 7th 2015
 507 acres

Perimeter as of 08/5/2015 @ 1100

CS 8/6/2015 1855



- Uncontrolled Fire Edge
- Completed Dozer Line
- Hand Line
- Drop Point
- Helispot
- Lookout
- Repeater
- Structures
- Hazard
- Route to Fire
- Contours - 40 ft interval
- Open Road
- Closed Road