

117°32'0"W 117°31'0"W 117°30'0"W 117°29'0"W 117°28'0"W

48°50'0"N

48°49'0"N

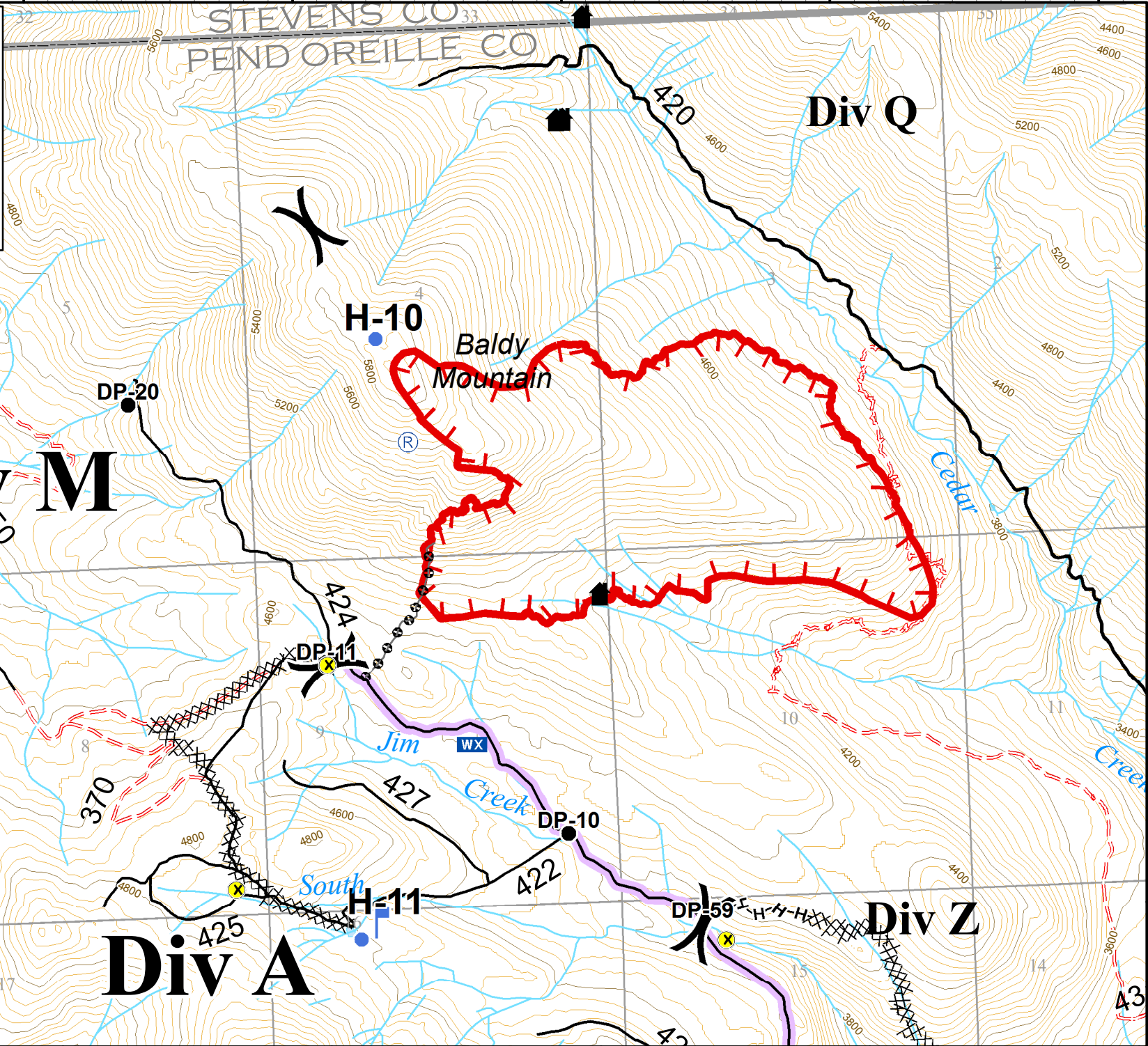
48°48'0"N

Baldy
 WA-COF-001003
 221-JEZ

IAP Map
 August 8th 2015
 521 acres

Perimeter as of 08/6/2015 @ 2000

CS 8/7/2015 1856



- Uncontrolled Fire Edge
- Completed Dozer Line
- Hand Line
- Hoselay
- Drop Point
- Helispot
- Lookout
- Mobile Weather Unit
- Repeater
- Structures
- Hazard
- Route to Fire
- Contours - 40 ft interval
- Open Road
- Closed Road