

117°33'0"W 117°32'0"W 117°31'0"W 117°30'0"W 117°29'0"W 117°28'0"W 117°27'0"W 117°26'0"W 117°25'0"W 117°24'0"W 117°23'0"W

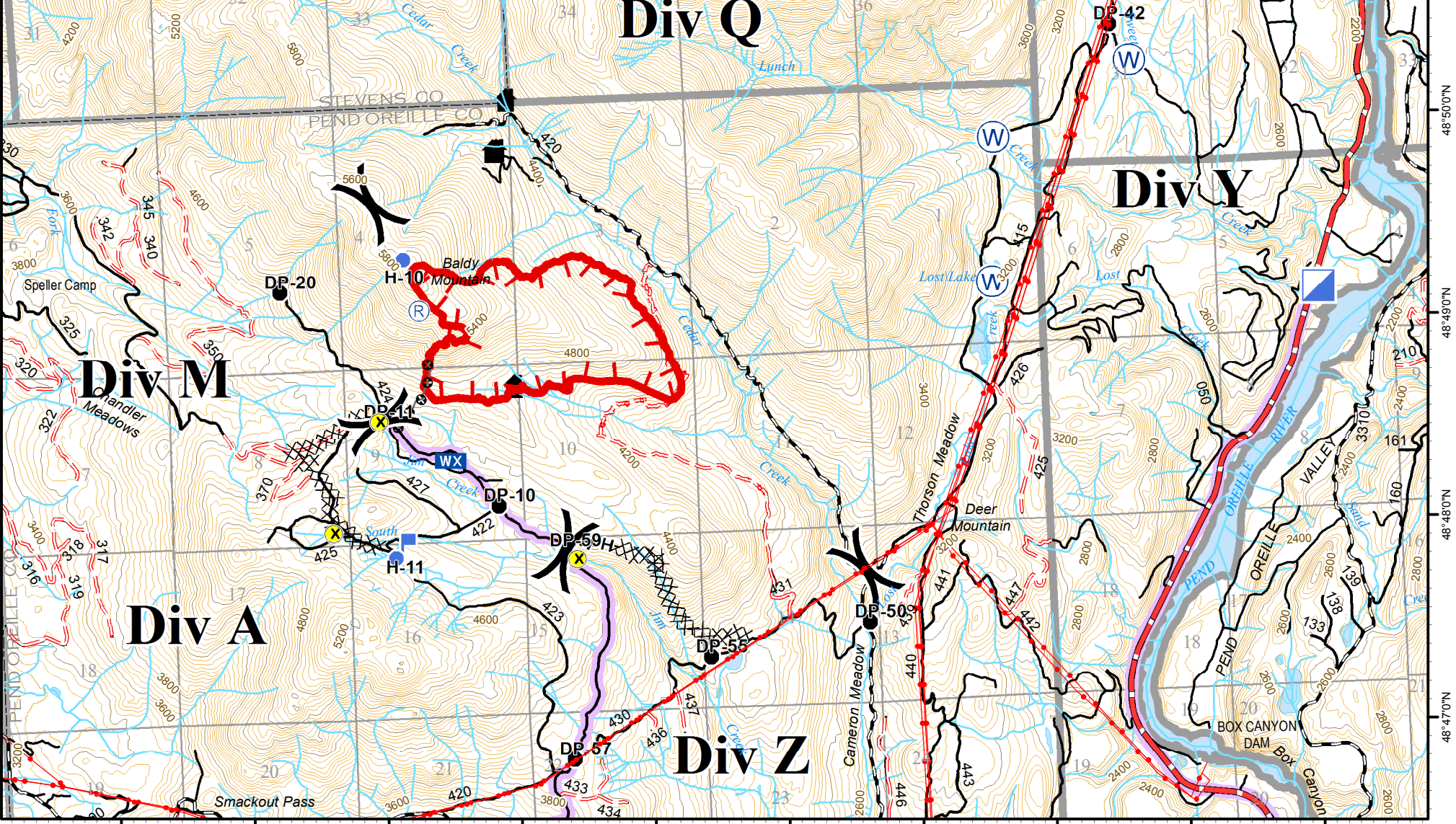
Baldy
 WA-COF-001003
 221-JEZ

IAP Map
 August 8th 2015
 521 acres

Perimeter as of 08/6/2015 @ 2000

CS 8/7/2015 1847

Uncontrolled Fire Edge	Drop Point	Mobile Weather Unit	Hazard	Contours - 40 ft interval
Completed Dozer Line	Heliport	Repeater	Utility Lines	Closed Road
Hand Line	Incident Command Post	Water Source	Route to Fire	Other Roads
Hose Lay	Lookout	Cabin		



48°51'0"N
48°50'0"N
48°49'0"N
48°48'0"N
48°47'0"N