

117°34'0"W 117°33'0"W 117°32'0"W 117°31'0"W 117°30'0"W 117°29'0"W 117°28'0"W 117°27'0"W 117°26'0"W 117°25'0"W 117°24'0"W

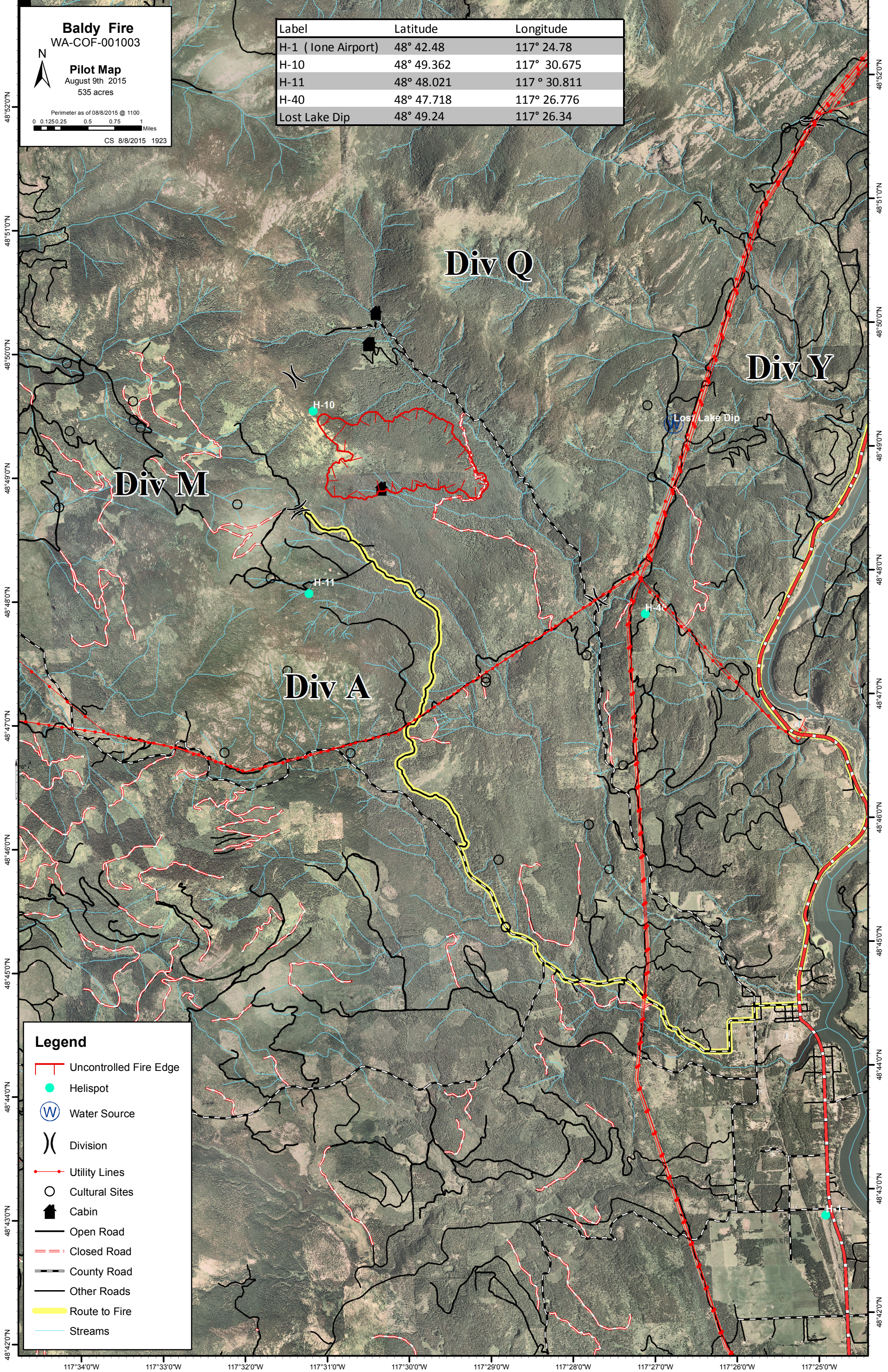
Baldy Fire
WA-COF-001003

Pilot Map
August 9th 2015
535 acres

Perimeter as of 08/8/2015 @ 1100

CS 8/8/2015 1923

Label	Latitude	Longitude
H-1 (Lone Airport)	48° 42.48	117° 24.78
H-10	48° 49.362	117° 30.675
H-11	48° 48.021	117° 30.811
H-40	48° 47.718	117° 26.776
Lost Lake Dip	48° 49.24	117° 26.34



Legend

- Uncontrolled Fire Edge
- Helispot
- Water Source
- Division
- Utility Lines
- Cultural Sites
- Cabin
- Open Road
- Closed Road
- County Road
- Other Roads
- Route to Fire
- Streams

117°34'0"W 117°33'0"W 117°32'0"W 117°31'0"W 117°30'0"W 117°29'0"W 117°28'0"W 117°27'0"W 117°26'0"W 117°25'0"W