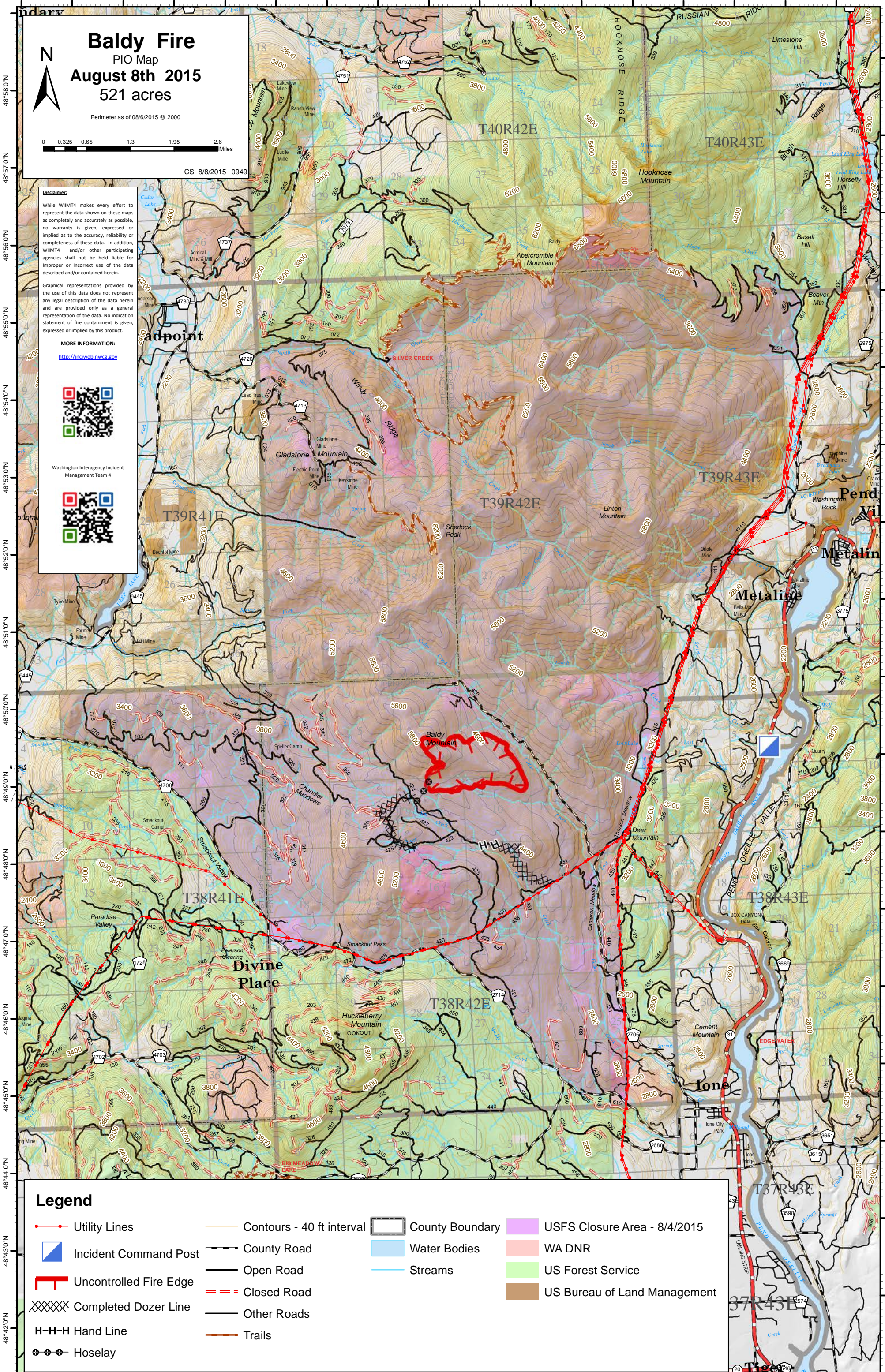


117°38'0"W 117°37'0"W 117°36'0"W 117°35'0"W 117°34'0"W 117°33'0"W 117°32'0"W 117°31'0"W 117°30'0"W 117°29'0"W 117°28'0"W 117°27'0"W 117°26'0"W 117°25'0"W 117°24'0"W 117°23'0"W 117°22'0"W



Baldy Fire

PIO Map

August 8th 2015

521 acres

Perimeter as of 08/6/2015 @ 2000

CS 8/8/2015 0949



0 0.325 0.65 1.3 1.95 2.6 Miles

Disclaimer:

While WIMT4 makes every effort to represent the data shown on these maps as completely and accurately as possible, no warranty is given, expressed or implied as to the accuracy, reliability or completeness of these data. In addition, WIMT4 and/or other participating agencies shall not be held liable for improper or incorrect use of the data described and/or contained herein.

Graphical representations provided by the use of this data does not represent any legal description of the data herein and are provided only as a general representation of the data. No indication statement of fire containment is given, expressed or implied by this product.

MORE INFORMATION:

<http://inciweb.nwcc.gov>



Washington Interagency Incident Management Team 4



Legend

- Utility Lines
- Contours - 40 ft interval
- County Boundary
- USFS Closure Area - 8/4/2015
- Incident Command Post
- County Road
- Water Bodies
- WA DNR
- Uncontrolled Fire Edge
- Open Road
- Streams
- US Forest Service
- Completed Dozer Line
- Closed Road
- US Bureau of Land Management
- H-H-H Hand Line
- Other Roads
- Hoselay
- Trails