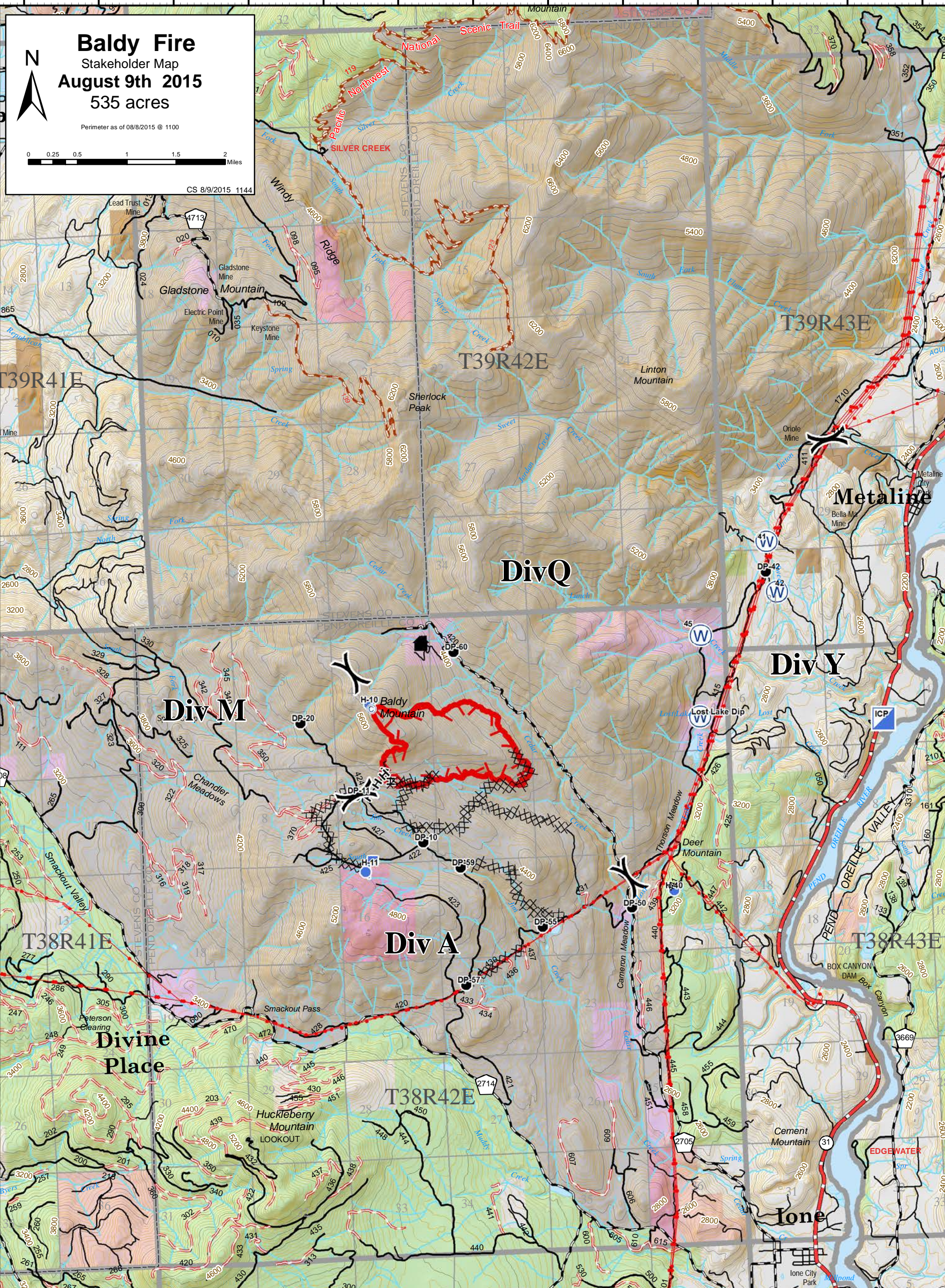


117°35'0"W 117°34'0"W 117°33'0"W 117°32'0"W 117°31'0"W 117°30'0"W 117°29'0"W 117°28'0"W 117°27'0"W 117°26'0"W 117°25'0"W 117°24'0"W 117°23'0"W



**Baldy Fire**  
 Stakeholder Map  
 August 9th 2015  
 535 acres

Perimeter as of 08/8/2015 @ 1100

CS 8/9/2015 1144

0 0.25 0.5 1 1.5 2 Miles

**Legend**

|                        |             |              |                              |                              |
|------------------------|-------------|--------------|------------------------------|------------------------------|
| Uncontrolled Fire Edge | Spike Camp  | Lookout      | Contours - 40 ft interval    | County Boundary              |
| Drop Point             | Helispot    | Water Source | County Road                  | Water Bodies                 |
| Incident Command Post  | Division    | Open Road    | Closed Road                  | Streams                      |
| Structure              | Other Roads | Trails       | USFS Closure Area - 8/4/2015 | WA DNR                       |
| Utility Lines          |             |              | US Forest Service            | US Bureau of Land Management |

Dozer Line - 37,620 ft  
 HandLine - 5,070 ft.  
 Hoselay - 2,454 ft