

117°32'0"W

117°31'0"W

117°30'0"W

117°29'0"W

117°28'0"W

**Baldy**  
WA-COF-001003

**IAP Map**  
August 13th 2015  
515 acres

Perimeter as of 08/12/2015 @ 1700

CS 8/12/2015 2023

# Div Q

## H-10

DP-60

DP-20

DP-11

DP-10

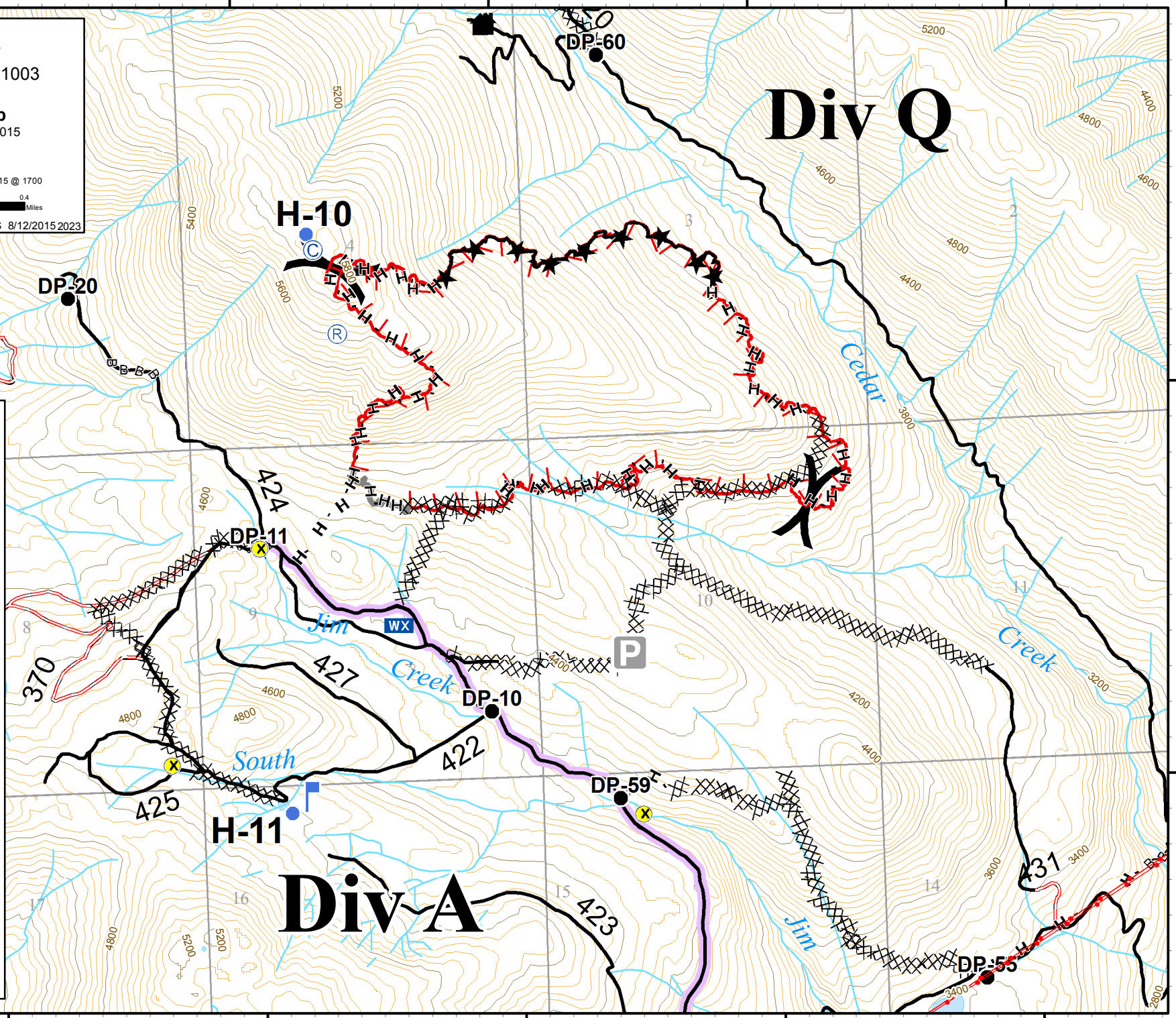
DP-59

DP-55

## H-11

# Div A

- Uncontrolled Fire Edge
- Completed Line
- Saw Line
- Brushed
- Completed Dozer Line
- Hand Line
- Spike Camp
- Drop Point
- Helispot
- Lookout
- Mobile Weather Unit
- Repeater
- Structures
- Parking
- Hazard
- Utility Lines
- Route to Fire
- Contours - 40 ft interval
- Open Road
- Closed Road



48°49'0"N

48°48'0"N