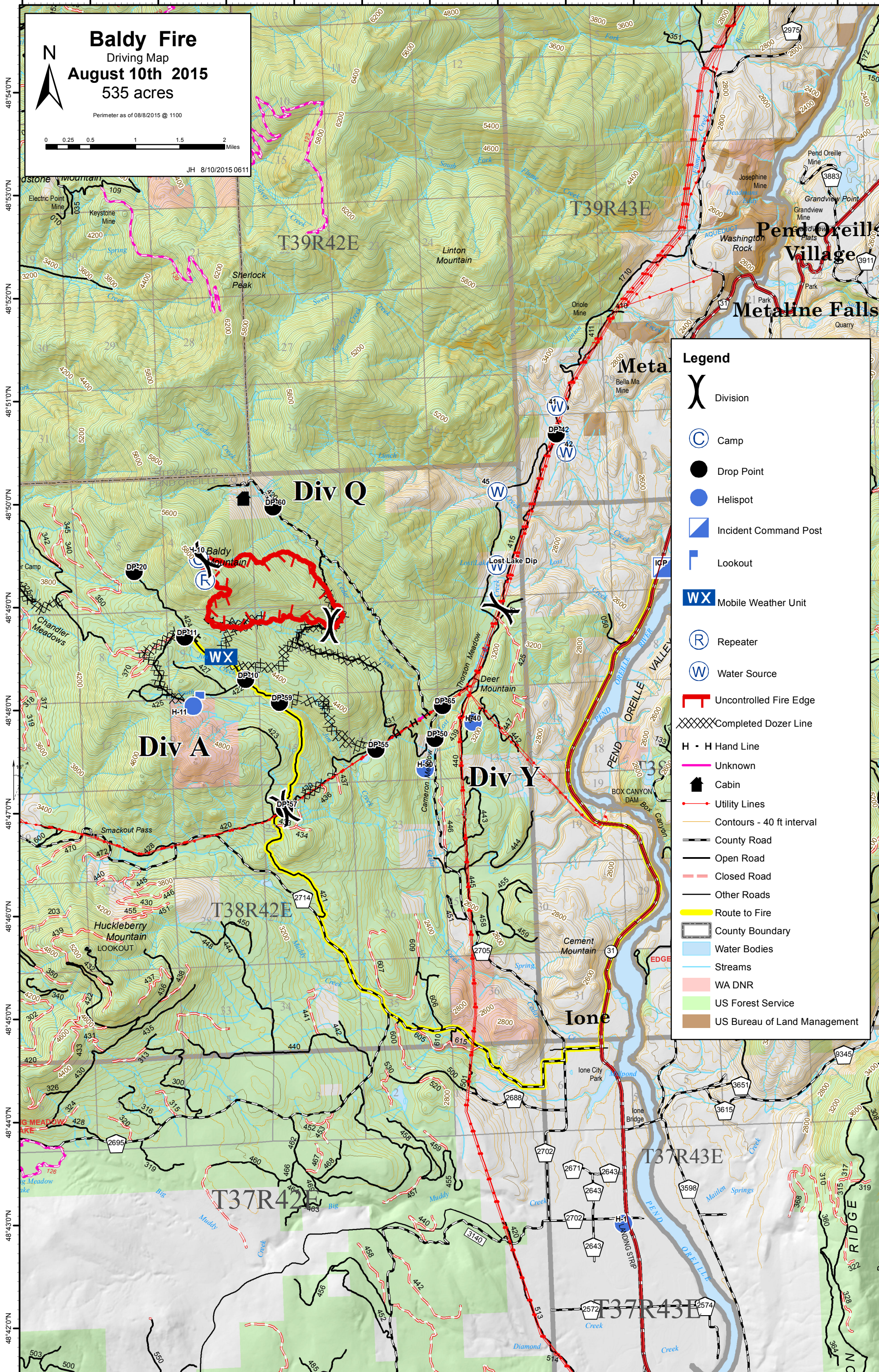


117°33'0"W 117°32'0"W 117°31'0"W 117°30'0"W 117°29'0"W 117°28'0"W 117°27'0"W 117°26'0"W 117°25'0"W 117°24'0"W 117°23'0"W 117°22'0"W 117°21'0"W



Baldy Fire
 Driving Map
August 10th 2015
 535 acres
 Perimeter as of 08/8/2015 @ 1100

JH 8/10/2015 0611

0 0.25 0.5 1 1.5 2 Miles

Legend

- X Division
- C Camp
- Drop Point
- Helispot
- ▣ Incident Command Post
- ▣ Lookout
- WX Mobile Weather Unit
- Ⓡ Repeater
- Ⓢ Water Source
- ▬ Uncontrolled Fire Edge
- XXXXX Completed Dozer Line
- H - H Hand Line
- Unknown
- 🏠 Cabin
- Utility Lines
- Contours - 40 ft interval
- County Road
- Open Road
- Closed Road
- Other Roads
- Route to Fire
- ▭ County Boundary
- ▭ Water Bodies
- ▭ Streams
- ▭ WA DNR
- ▭ US Forest Service
- ▭ US Bureau of Land Management