

117°34'0"W 117°33'0"W 117°32'0"W 117°31'0"W 117°30'0"W 117°29'0"W 117°28'0"W 117°27'0"W 117°26'0"W 117°25'0"W 117°24'0"W

Baldy Fire
WA-COF-001003

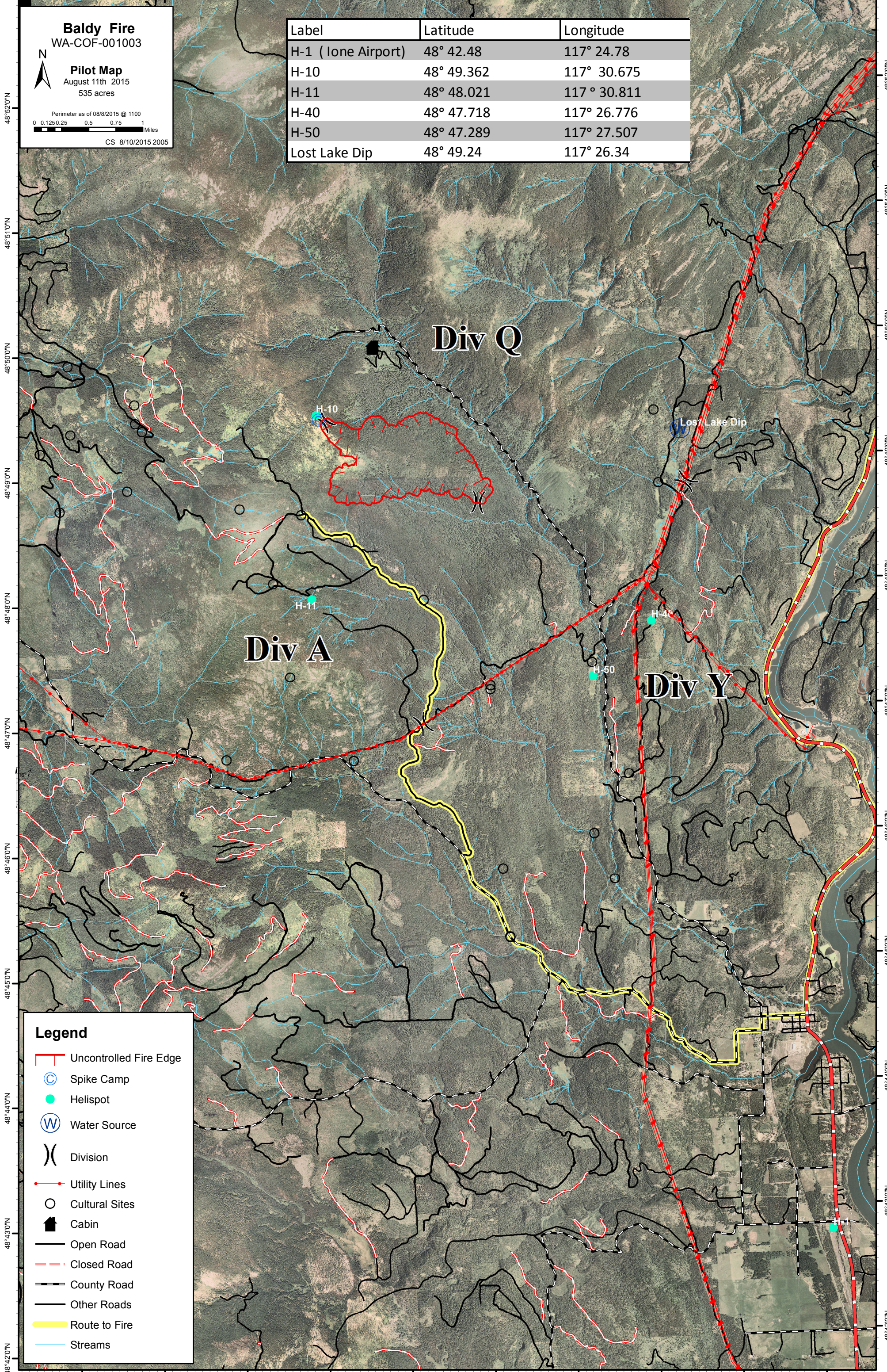
Pilot Map
August 11th 2015
535 acres

Perimeter as of 08/8/2015 @ 1100

0 0.125 0.25 0.5 0.75 1 Miles

CS 8/10/2015 2005

Label	Latitude	Longitude
H-1 (Lone Airport)	48° 42.48	117° 24.78
H-10	48° 49.362	117° 30.675
H-11	48° 48.021	117° 30.811
H-40	48° 47.718	117° 26.776
H-50	48° 47.289	117° 27.507
Lost Lake Dip	48° 49.24	117° 26.34



Legend

- Uncontrolled Fire Edge
- Spike Camp
- Helispot
- Water Source
- Division
- Utility Lines
- Cultural Sites
- Cabin
- Open Road
- Closed Road
- County Road
- Other Roads
- Route to Fire
- Streams

117°34'0"W 117°33'0"W 117°32'0"W 117°31'0"W 117°30'0"W 117°29'0"W 117°28'0"W 117°27'0"W 117°26'0"W 117°25'0"W