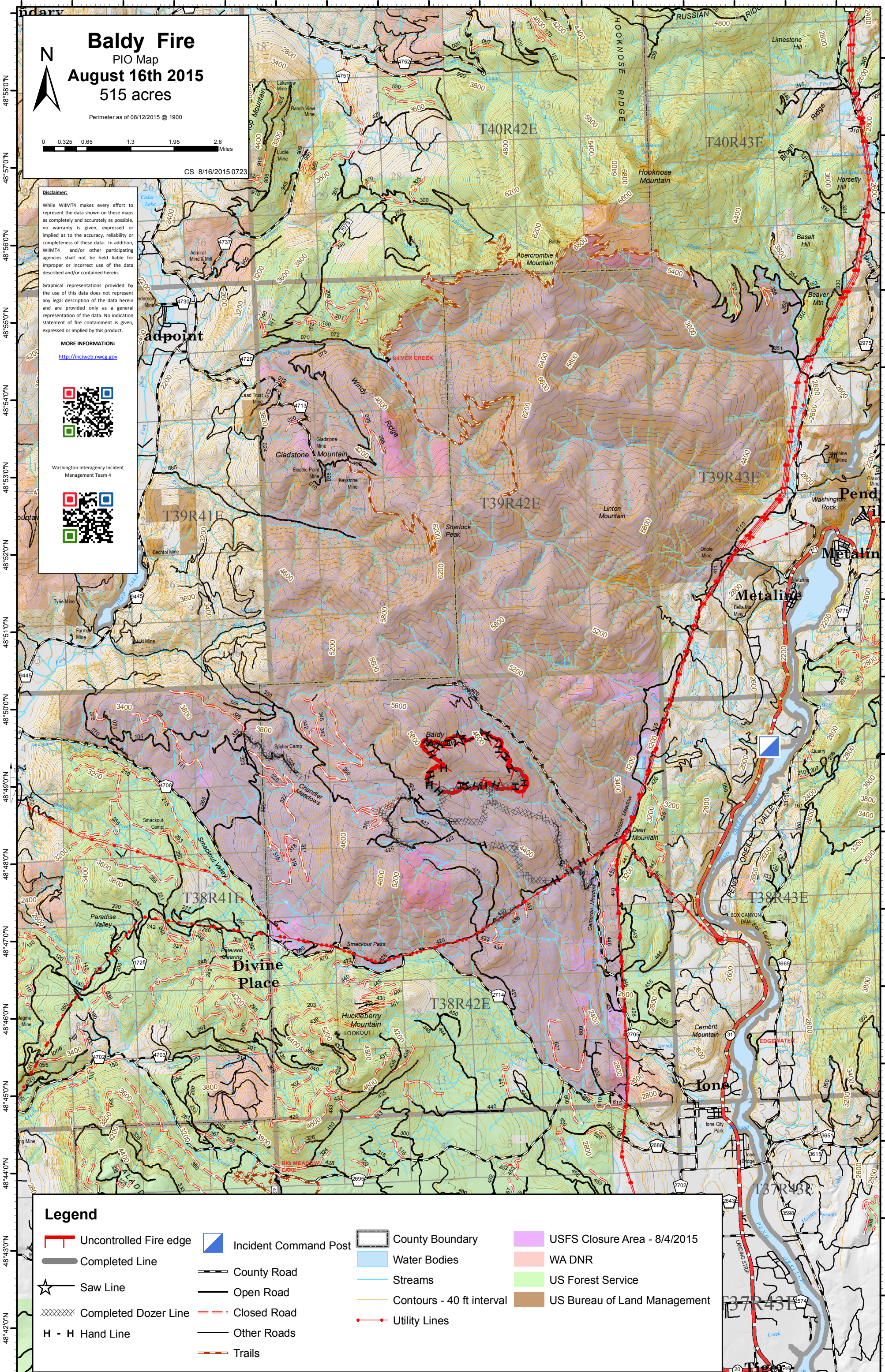


117°38'0"W 117°37'0"W 117°36'0"W 117°35'0"W 117°34'0"W 117°33'0"W 117°32'0"W 117°31'0"W 117°30'0"W 117°29'0"W 117°28'0"W 117°27'0"W 117°26'0"W 117°25'0"W 117°24'0"W 117°23'0"W 117°22'0"W

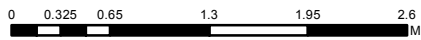


Baldy Fire

PIO Map
August 16th 2015
515 acres

Perimeter as of 08/12/2015 @ 1900

CS 8/16/2015 0723



Disclaimer:

While WIIMT4 makes every effort to represent the data shown on these maps as completely and accurately as possible, no warranty is given, expressed or implied as to the accuracy, reliability or completeness of these data. In addition, WIIMT4 and/or other participating agencies shall not be held liable for improper or incorrect use of the data described and/or contained herein.

Graphical representations provided by the use of this data does not represent any legal description of the data herein and are provided only as a general representation of the data. No indication statement of fire containment is given, expressed or implied by this product.

MORE INFORMATION:

<http://inciweb.nwcg.gov>



Washington Interagency Incident Management Team 4



Legend

- Uncontrolled Fire edge
- Incident Command Post
- County Boundary
- USFS Closure Area - 8/4/2015
- Completed Line
- Water Bodies
- WA DNR
- Saw Line
- County Road
- US Forest Service
- Completed Dozer Line
- Open Road
- Streams
- H - H Hand Line
- Closed Road
- Contours - 40 ft interval
- Other Roads
- Utility Lines
- Trails