
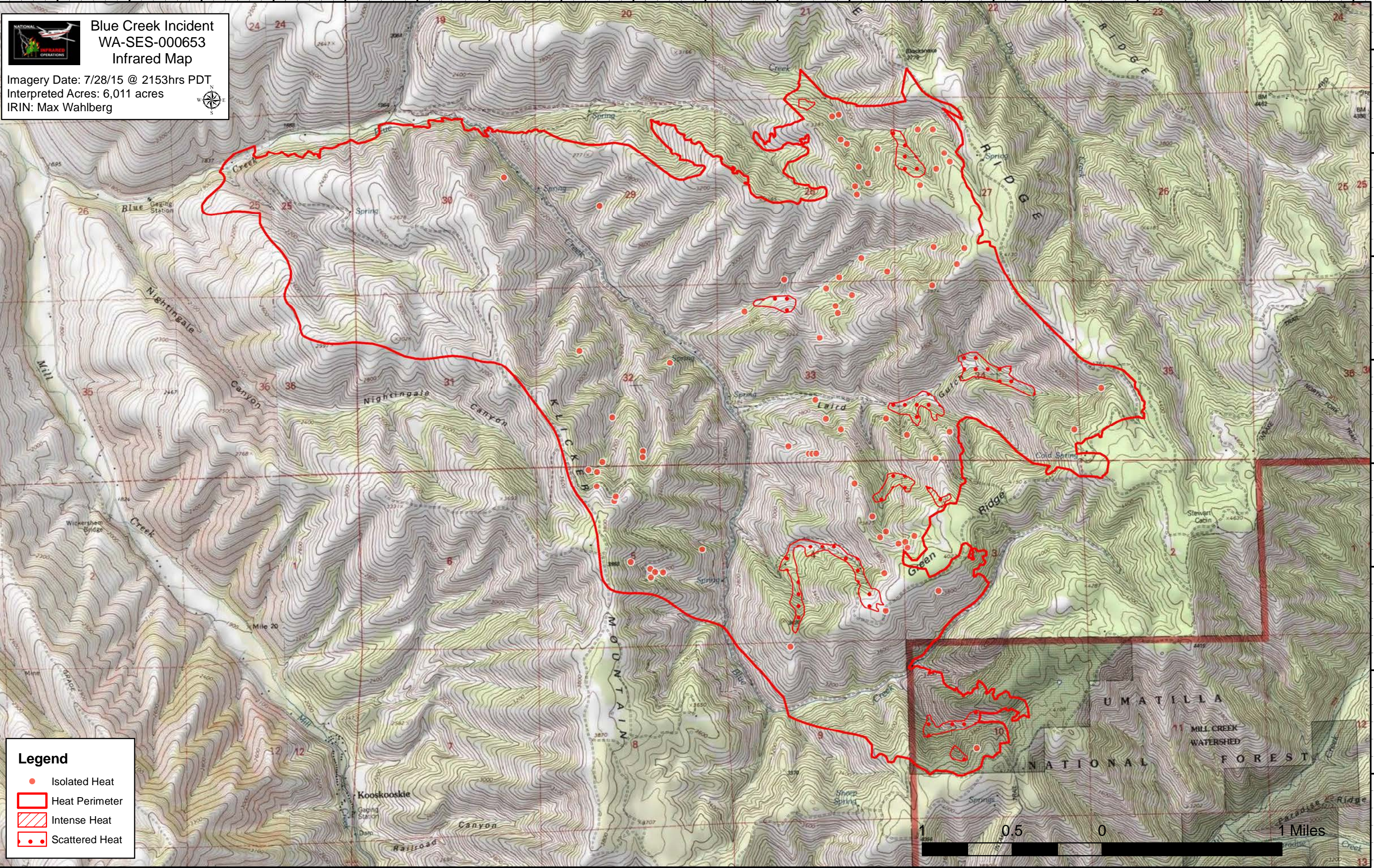


118°9'0"W 118°8'30"W 118°8'0"W 118°7'30"W 118°7'0"W 118°6'30"W 118°6'0"W 118°5'30"W 118°5'0"W 118°4'30"W 118°4'0"W 118°3'30"W 118°3'0"W 118°2'30"W 118°2'0"W 118°1'30"W 118°1'0"W 118°0'30"W 118°0'0"W

Blue Creek Incident
WA-SES-000653
Infrared Map

Imagery Date: 7/28/15 @ 2153hrs PDT
 Interpreted Acres: 6,011 acres
 IRIN: Max Wahlberg

118°9'30"W 118°9'0"W 118°8'30"W 118°8'0"W 118°7'30"W 118°7'0"W 118°6'30"W 118°6'0"W 118°5'30"W 118°5'0"W 118°4'30"W 118°4'0"W 118°3'30"W 118°3'0"W 118°2'30"W 118°2'0"W 118°1'30"W 118°1'0"W 118°0'30"W 118°0'0"W

46°4'0"N
46°3'30"N
46°3'0"N
46°2'30"N
46°2'0"N
46°1'30"N
46°1'0"N
46°0'30"N

46°4'0"N
46°3'30"N
46°3'0"N
46°2'30"N
46°2'0"N
46°1'30"N
46°1'0"N
46°0'30"N