


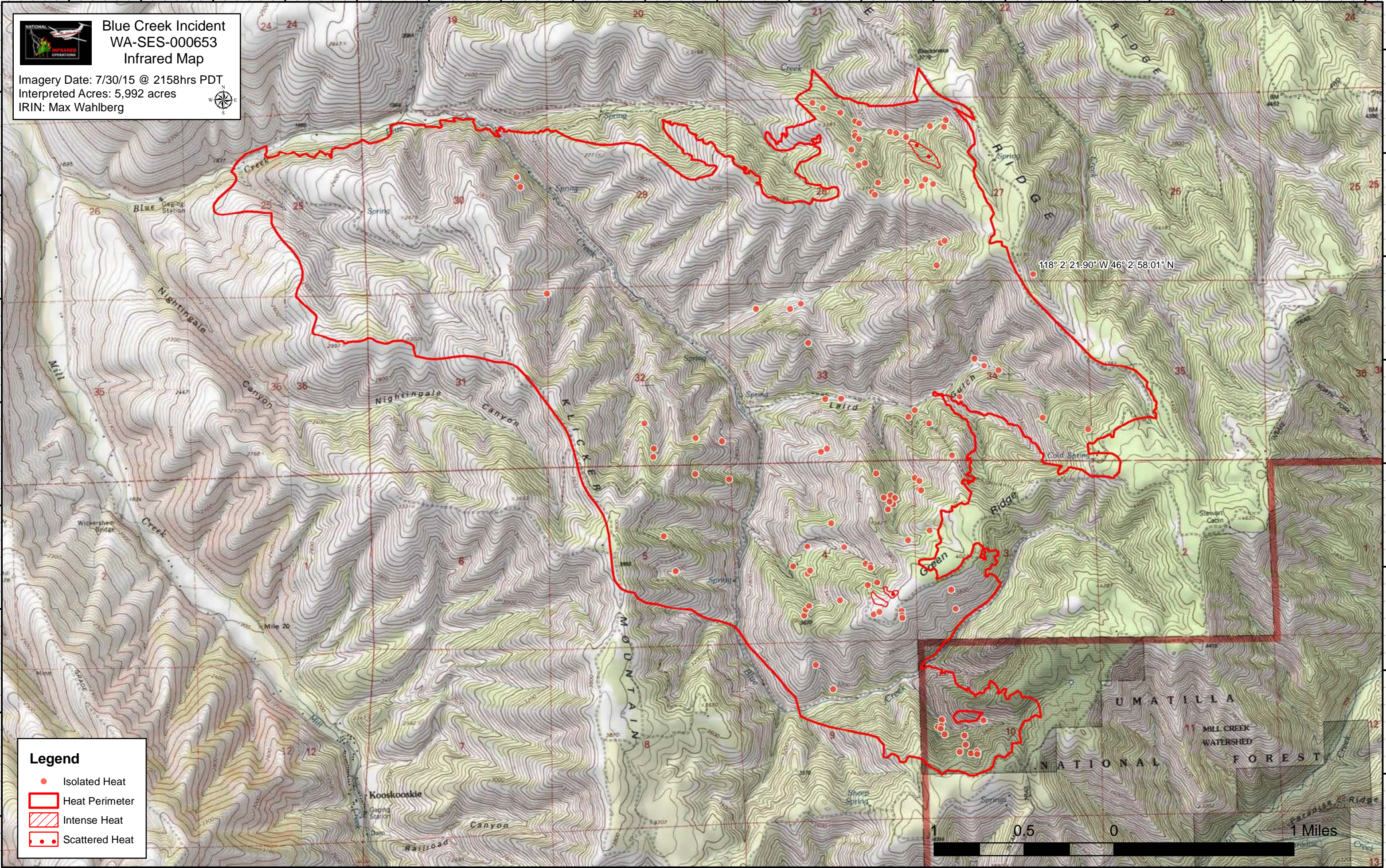
118°9'0"W 118°8'30"W 118°8'0"W 118°7'30"W 118°7'0"W 118°6'30"W 118°6'0"W 118°5'30"W 118°5'0"W 118°4'30"W 118°4'0"W 118°3'30"W 118°3'0"W 118°2'30"W 118°2'0"W 118°1'30"W 118°1'0"W 118°0'30"W 118°0'0"W

Blue Creek Incident
WA-SES-000653
Infrared Map

Imagery Date: 7/30/15 @ 2158hrs PDT
 Interpreted Acres: 5,992 acres
 IRIN: Max Wahlberg



46°4'0"N
46°3'30"N
46°3'0"N
46°2'30"N
46°2'0"N
46°1'30"N
46°1'0"N
46°0'30"N



118° 2' 21.90" W 46° 2' 58.01" N

Legend

- Isolated Heat
- Heat Perimeter
- Intense Heat
- Scattered Heat



118°9'30"W 118°9'0"W 118°8'30"W 118°8'0"W 118°7'30"W 118°7'0"W 118°6'30"W 118°6'0"W 118°5'30"W 118°5'0"W 118°4'30"W 118°4'0"W 118°3'30"W 118°3'0"W 118°2'30"W 118°2'0"W 118°1'30"W 118°1'0"W 118°0'30"W 118°0'0"W