

118°9'0"W 118°8'30"W 118°8'0"W 118°7'30"W 118°7'0"W 118°6'30"W 118°6'0"W 118°5'30"W 118°5'0"W 118°4'30"W 118°4'0"W 118°3'30"W 118°3'0"W 118°2'30"W 118°2'0"W 118°1'30"W 118°1'0"W 118°0'30"W 118°0'0"W






Blue Creek Incident
WA-SES-000653
Infrared Map

Imagery Date: 7/31/15 @ 2123hrs PDT
 Interpreted Acres: 5,992 acres (no change)
 IRIN: Max Wahlberg

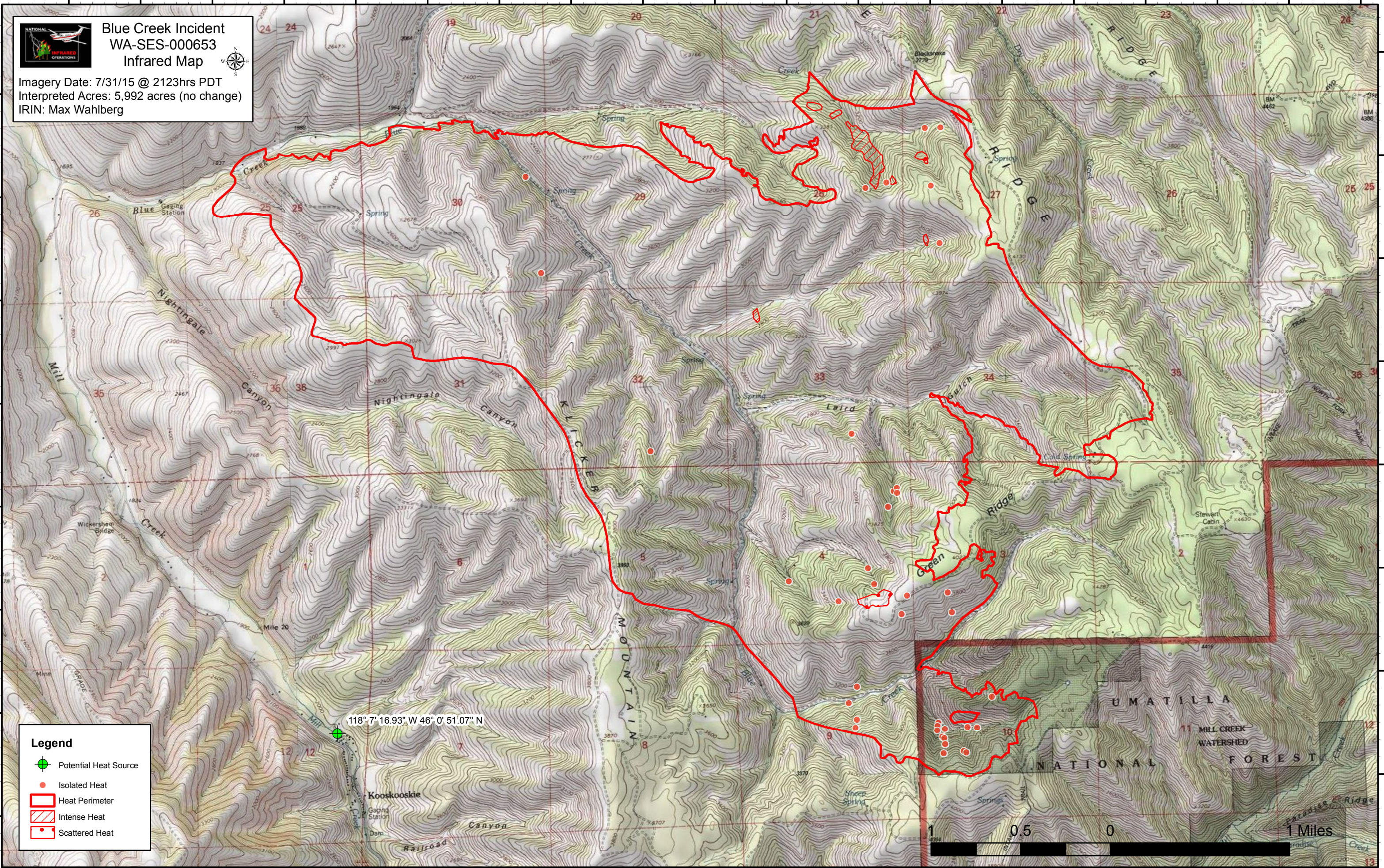
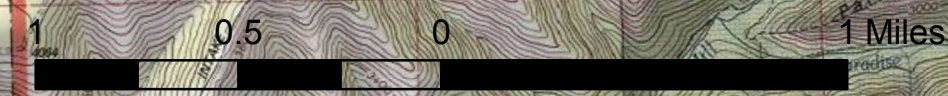
46°4'0"N
46°3'30"N
46°3'0"N
46°2'30"N
46°2'0"N
46°1'30"N
46°1'0"N
46°0'30"N

46°4'0"N
46°3'30"N
46°3'0"N
46°2'30"N
46°2'0"N
46°1'30"N
46°1'0"N
46°0'30"N

Legend

-  Potential Heat Source
-  Isolated Heat
-  Heat Perimeter
-  Intense Heat
-  Scattered Heat

118° 7' 16.93" W 46° 0' 51.07" N



118°9'30"W 118°9'0"W 118°8'30"W 118°8'0"W 118°7'30"W 118°7'0"W 118°6'30"W 118°6'0"W 118°5'30"W 118°5'0"W 118°4'30"W 118°4'0"W 118°3'30"W 118°3'0"W 118°2'30"W 118°2'0"W 118°1'30"W 118°1'0"W 118°0'30"W 118°0'0"W