

118°7'30"W

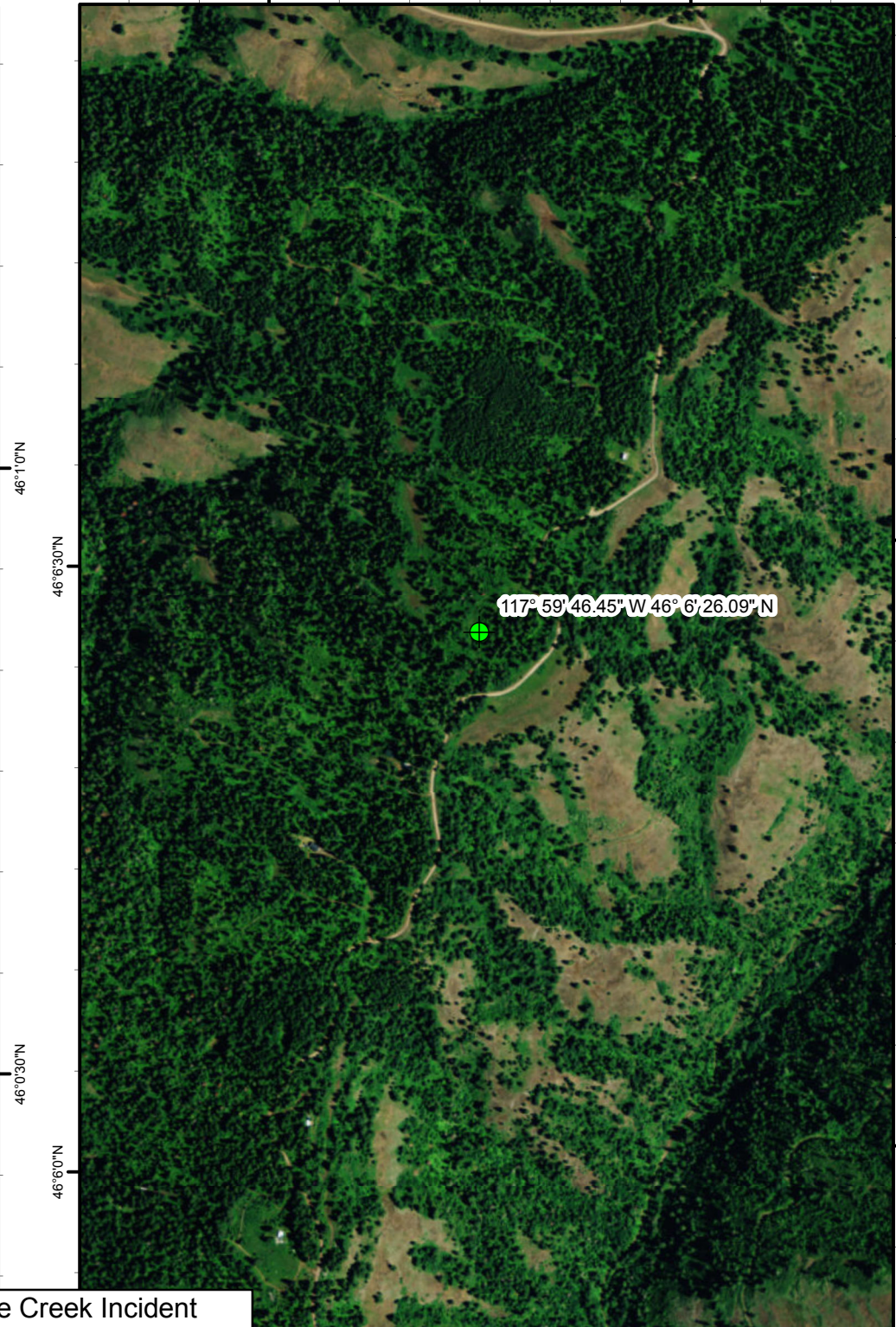
118°7'0"W

118°0'0"W

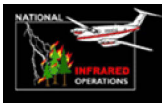
117°59'30"W



118° 7' 16.93" W 46° 0' 51.07" N

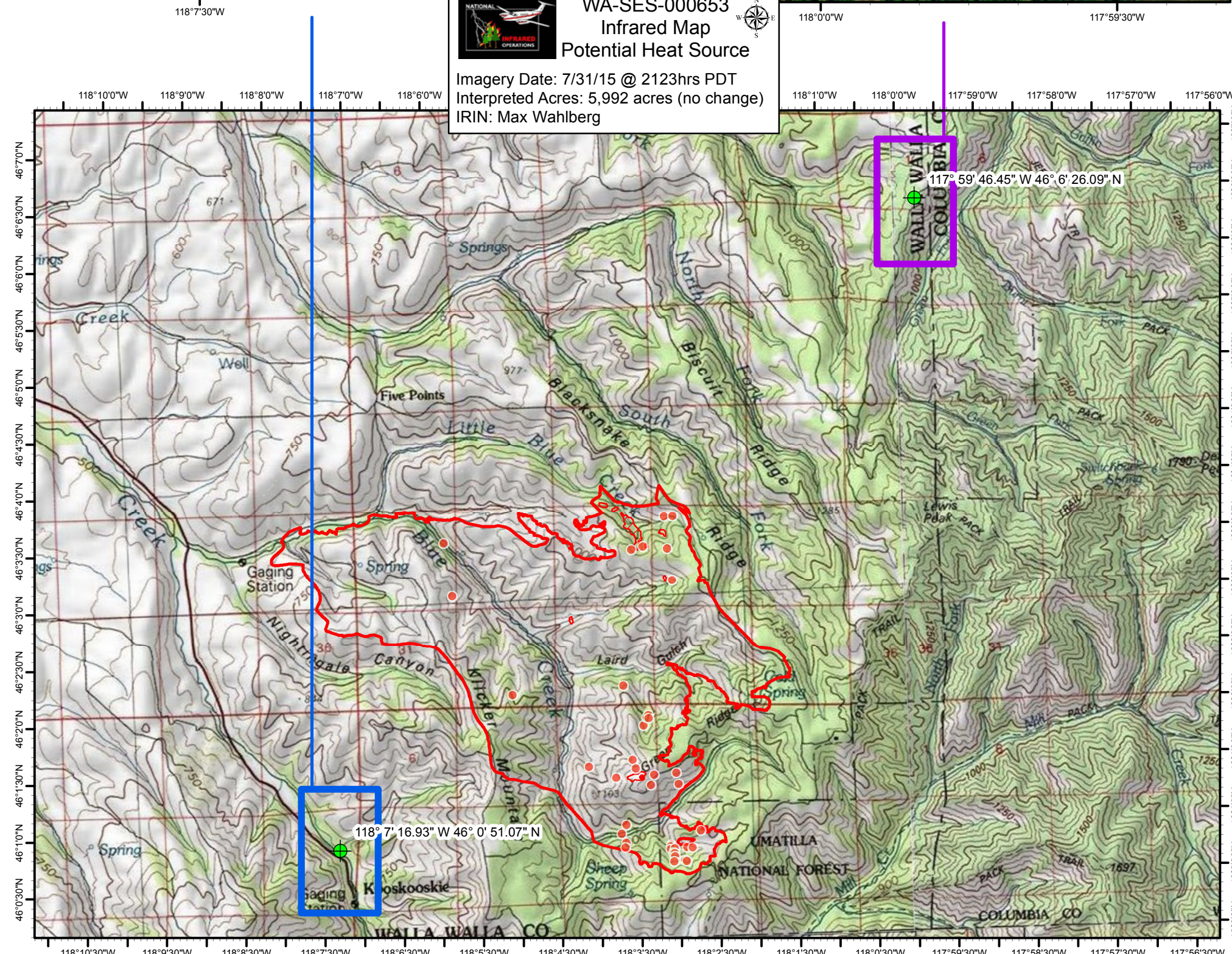


117° 59' 46.45" W 46° 6' 26.09" N



Blue Creek Incident  
 WA-SES-000653  
 Infrared Map  
 Potential Heat Source

Imagery Date: 7/31/15 @ 2123hrs PDT  
 Interpreted Acres: 5,992 acres (no change)  
 IRIN: Max Wahlberg



118° 7' 16.93" W 46° 0' 51.07" N

117° 59' 46.45" W 46° 6' 26.09" N