

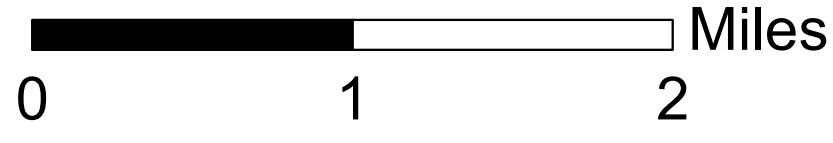
Chelan Complex Fire WA-SES-000701

Branch V & VI Ops Map

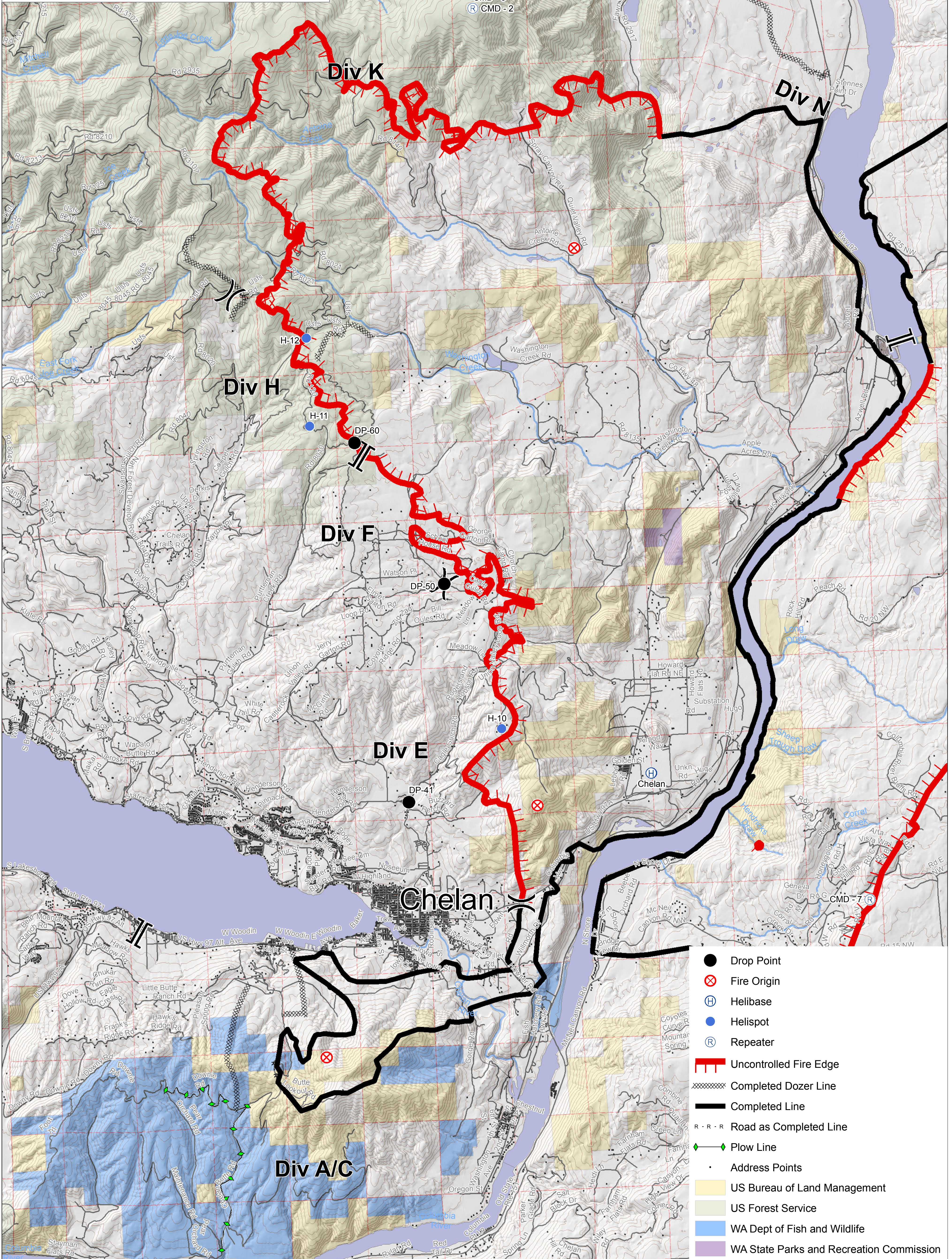
August 19, 2015

69,445 acres

Perimeter as of August 17, 2015 at 2117



JAC 8/17/2015 2200



- Drop Point
- ⊗ Fire Origin
- Ⓜ Helibase
- Helispot
- Ⓡ Repeater
- ▬ Uncontrolled Fire Edge
- ▬ Completed Dozer Line
- ▬ Completed Line
- ▬ Road as Completed Line
- ◆ Plow Line
- Address Points
- US Bureau of Land Management
- US Forest Service
- WA Dept of Fish and Wildlife
- WA State Parks and Recreation Commission