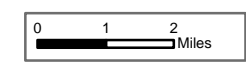


Chelan Fires Incident Index Map

GIS Acres 139,494
8/22/2015 1200



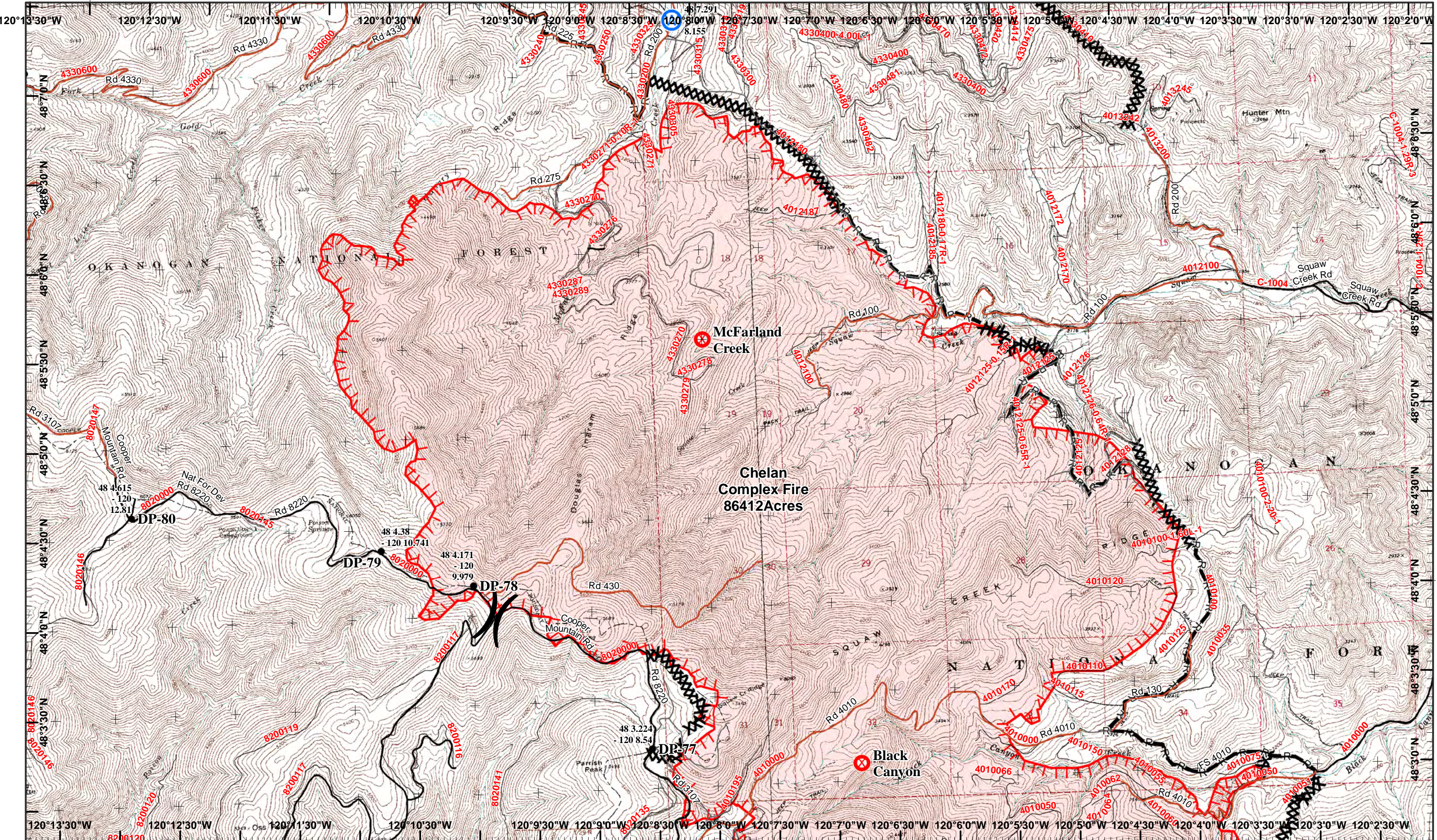
Day Operational Period 8/23/2015

Map Created 8/22/2015 19:01:43 PM RDC

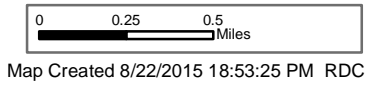
Uncontrolled Fire Edge



) Division
] Branch



Chelan Fires Incident
 GIS Acres 139,494
 8/22/2015 1200
 Day Operational Period 8/23/2015



⊗ Fire Origin



Water Source

XXXX Completed Dozer Line
 R—R Road as Completed Line

▬▬▬ Uncontrolled Fire Edge

● Drop Point

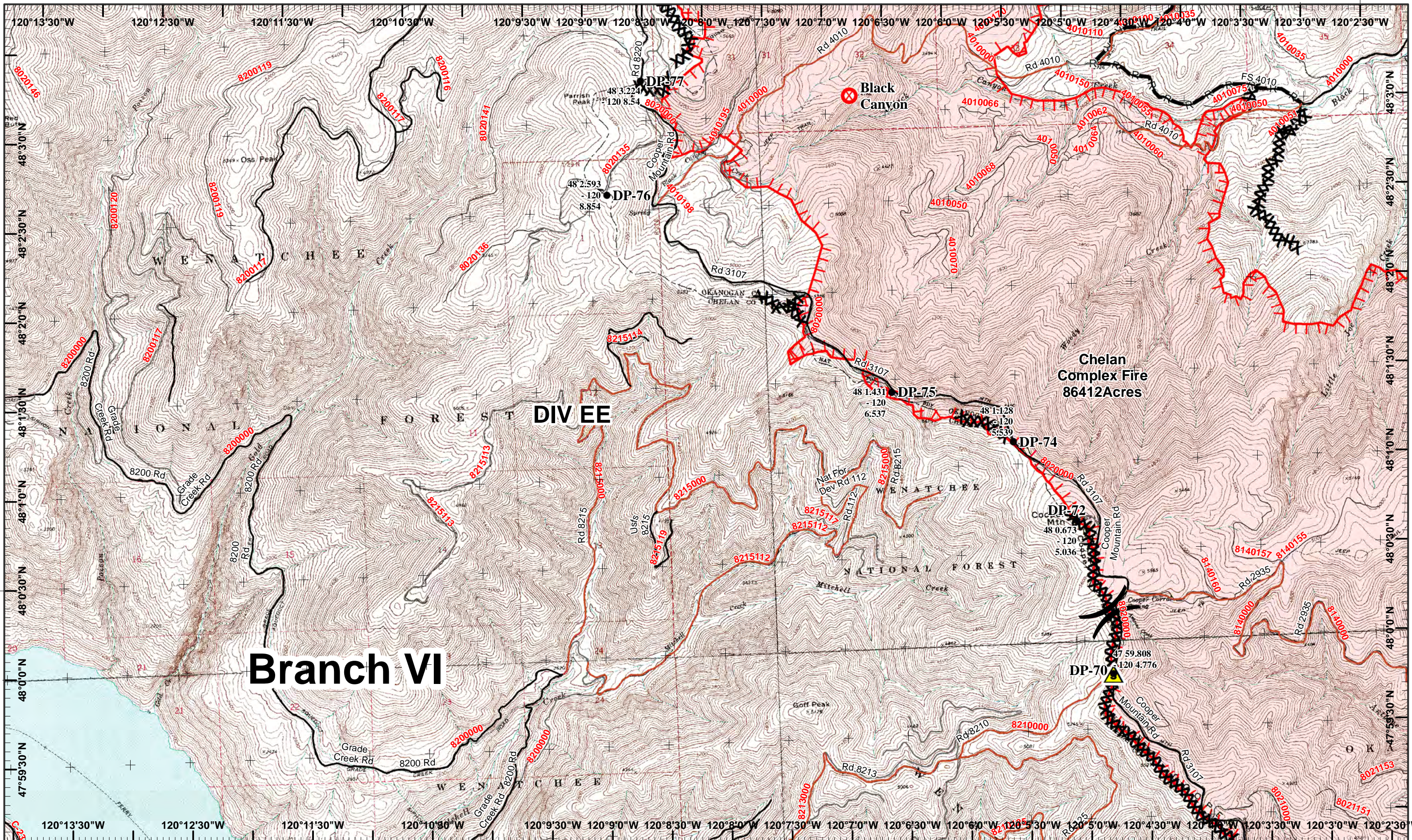
Neighboring Pages

West Page	North Page	East Page
	Douth Page 2	

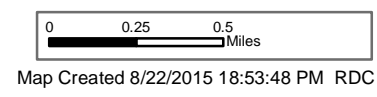
1	2	3	4
5	6	7	8
9	10		

Page 1
)(Division
 || Branch





Chelan Fires Incident
 GIS Acres 139,494
 8/22/2015 1200
 Day Operational Period 8/23/2015

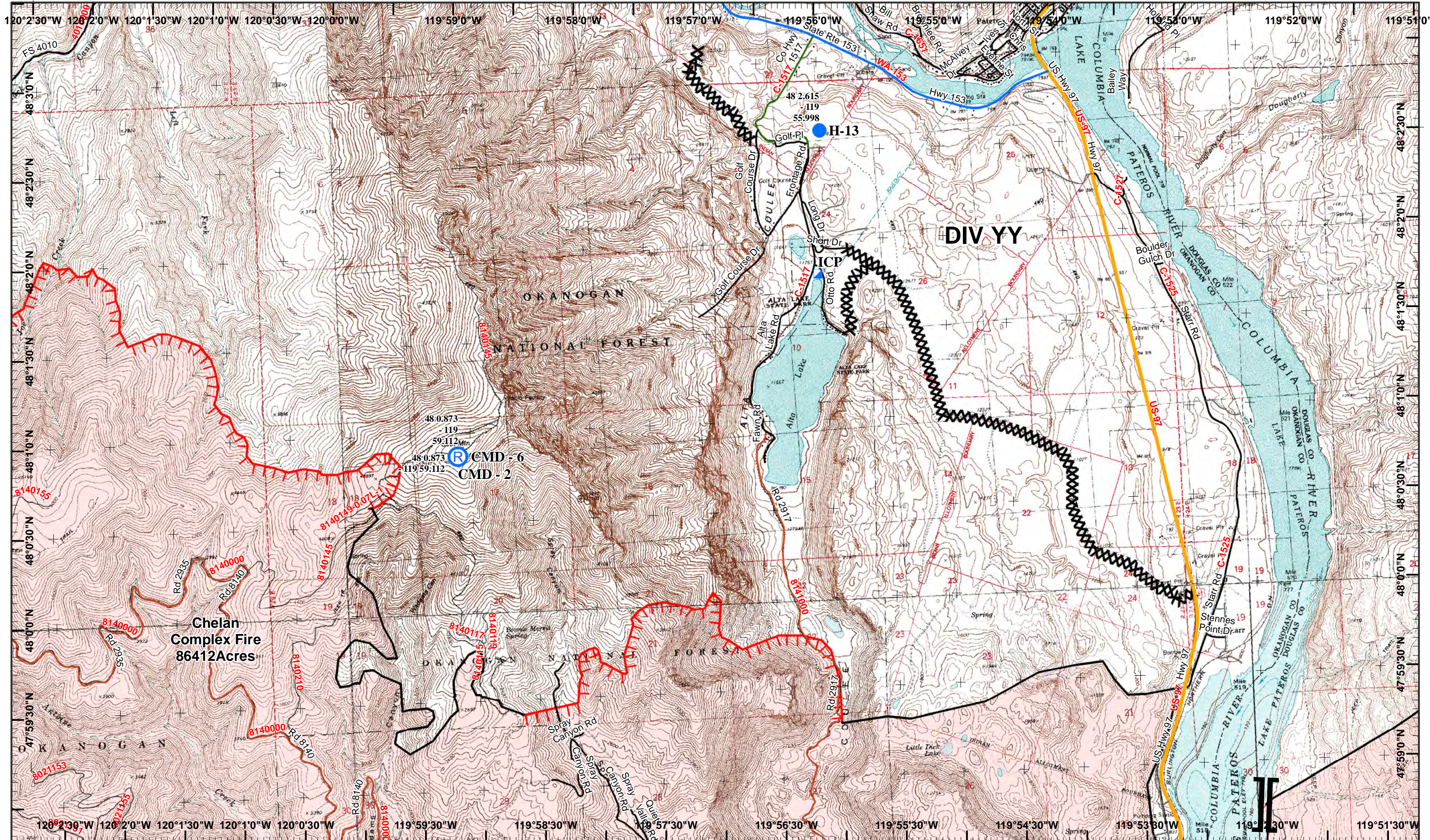


- North Arrow
- Fire Origin
- Safety Zone
- Completed Dozer Line
- Road as Completed Line
- Drop Point
- Uncontrolled Fire Edge

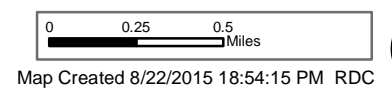
Neighboring Pages

West Page	North Page 1	East Page 3
	Douth Page	

Page 2
)(Division
 || Branch



Chelan Fires Incident
 GIS Acres 139,494
 8/22/2015 1200
 Day Operational Period 8/23/2015



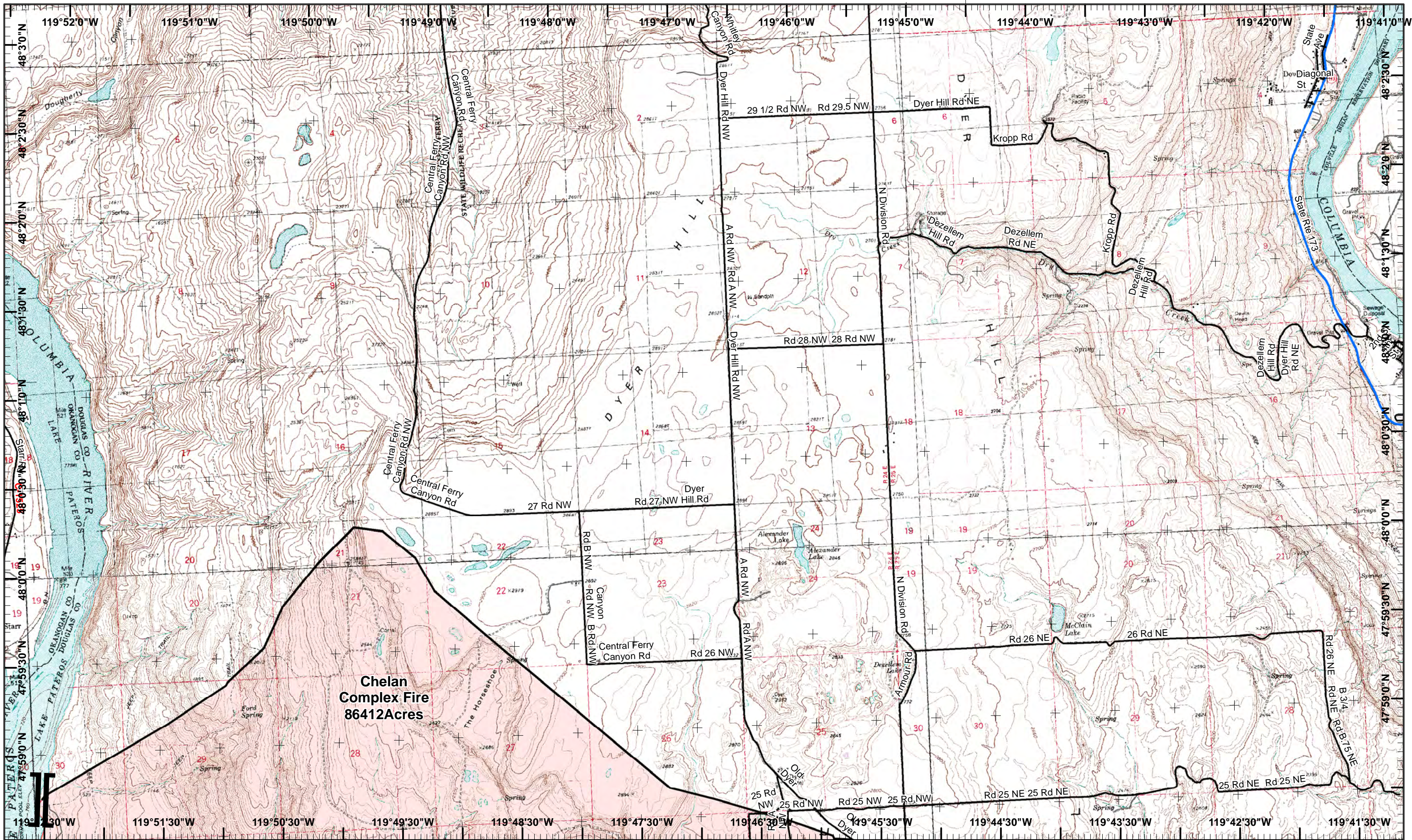
- North
- Incident Command Post
- Helispot
- Repeater
- Completed Line
- Uncontrolled Fire Edge
- Completed Dozer Line

Neighboring Pages
 West Page 2 North Page 3
 South Page 5 East Page 4

1	2	3	4
5	6	7	8
9	10		

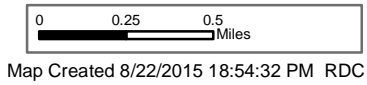
Page 3
)(Division
 || Branch





Chelan Complex Fire
86412 Acres

Chelan Fires Incident
GIS Acres 139,494
8/22/2015 1200
Day Operational Period 8/23/2015



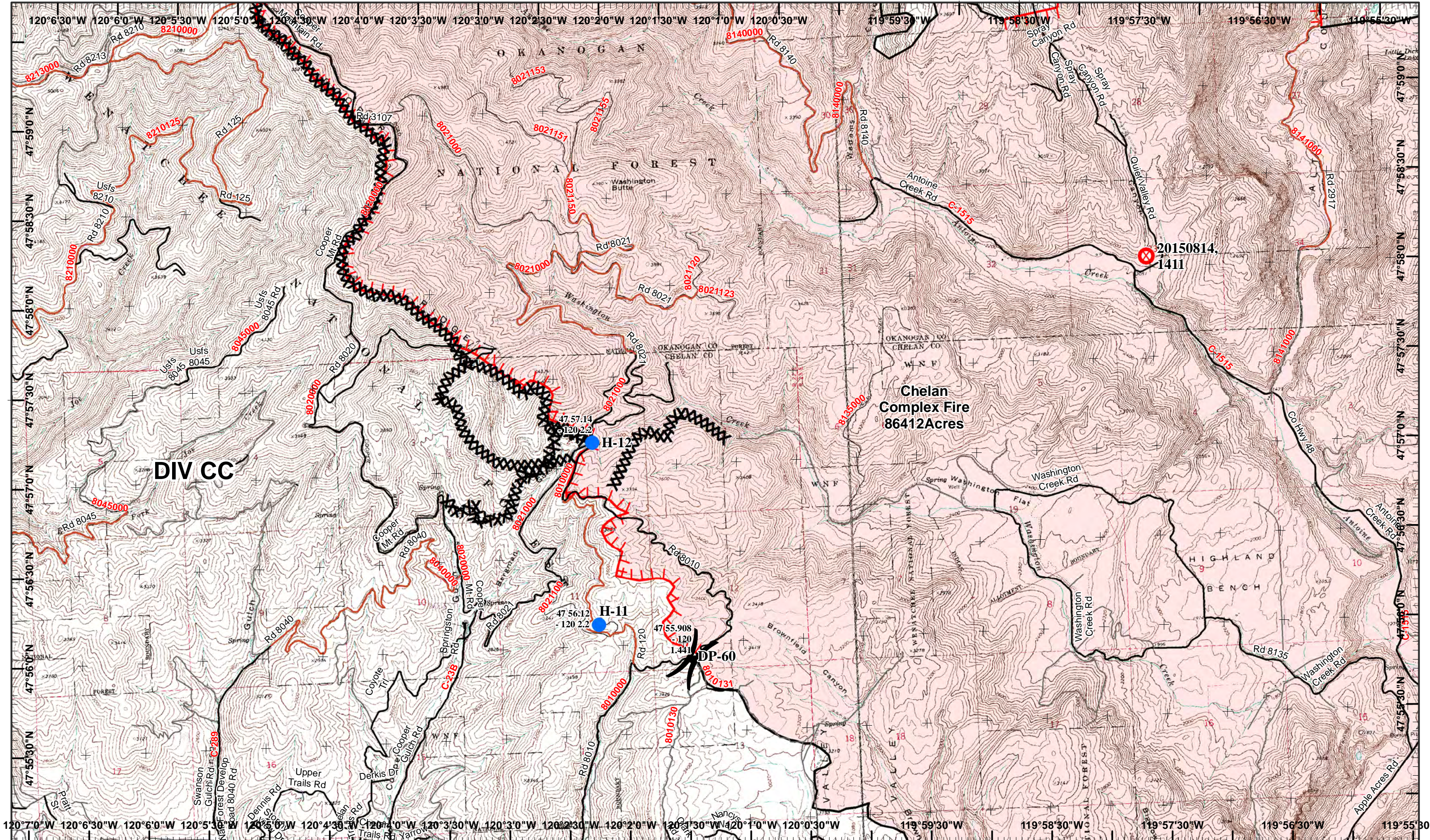
Completed Line

Neighboring Pages
West Page 3 North Page
Douth Page 6 East Page

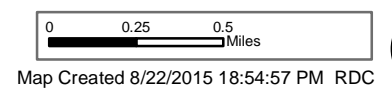
1	2	3	4
5	6	7	8
9	10		

Page 4
() Division
[] Branch





Chelan Fires Incident
 GIS Acres 139,494
 8/22/2015 1200
 Day Operational Period 8/23/2015



- North
- Fire Origin
- Helispot
- Drop Point
- Completed Dozer Line
- Completed Line
- Uncontrolled Fire Edge

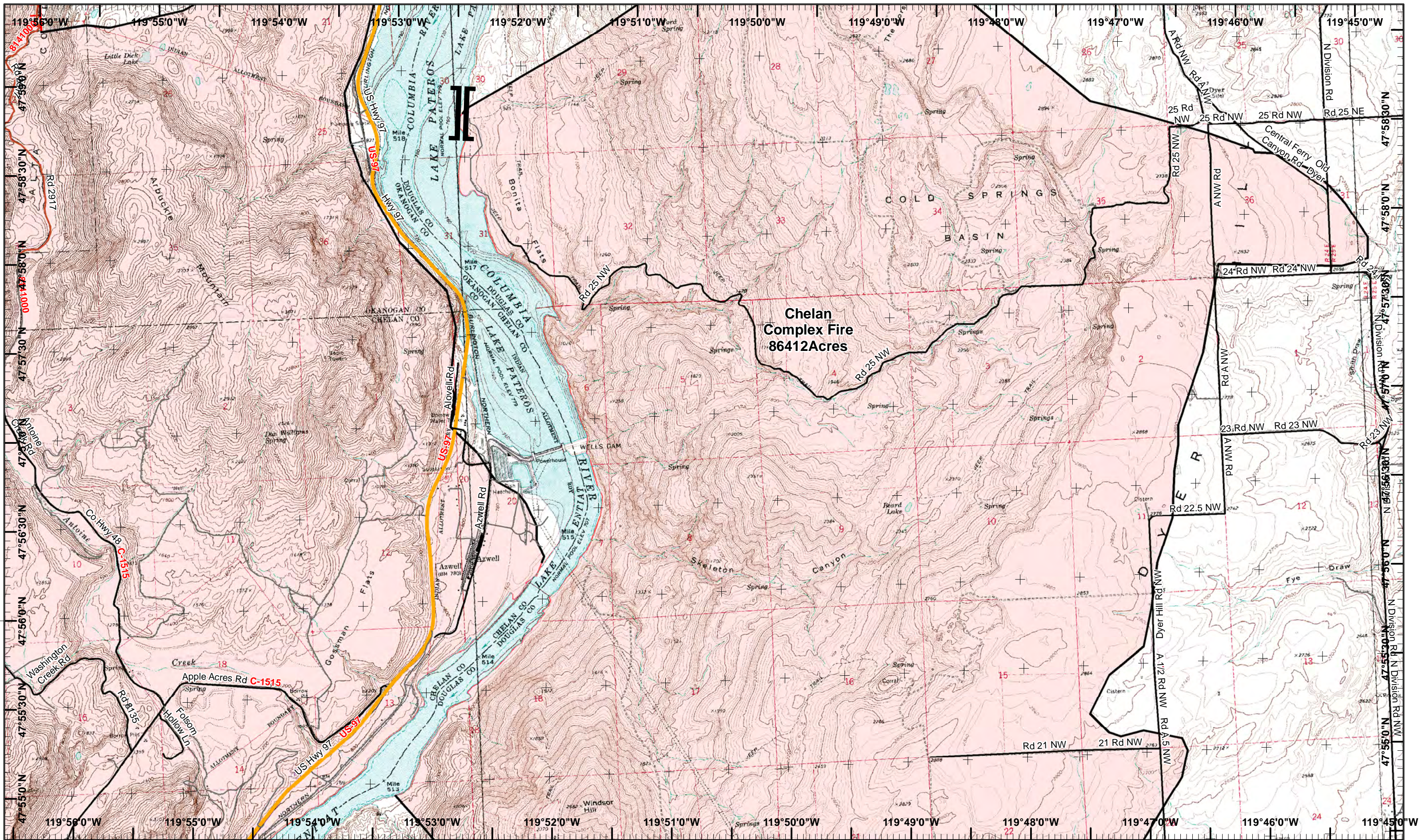
Neighboring Pages

West Page	North Page 3	East Page 6
	Douth Page 7	

1	2	3	4
5	6		
7	8		
9	10		

Page 5
)(Division
 || Branch





Chelan Complex Fire
86412 Acres

Chelan Fires Incident
GIS Acres 139,494
8/22/2015 1200
Day Operational Period 8/23/2015

0 0.25 0.5 Miles
Map Created 8/22/2015 18:55:13 PM RDC

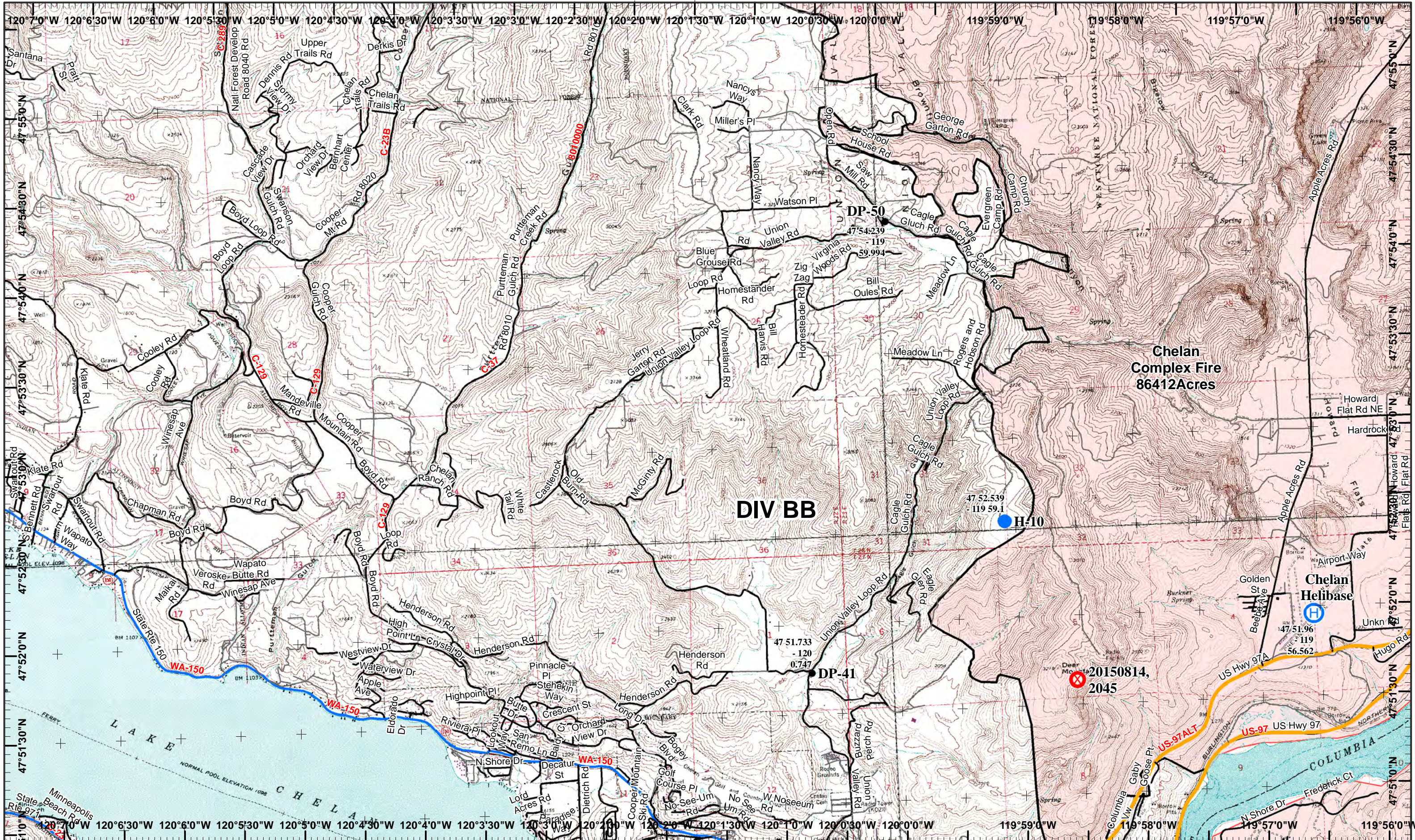


Neighboring Pages
West Page 5 North Page 4
Douth Page 8 East Page

1	2	3	4
5	6	7	8
9	10		

Page 6
)(Division
|| Branch





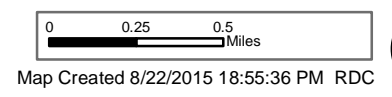
Chelan Complex Fire
86412 Acres

DIV BB

DP-41

20150814, 2045

Chelan Fires Incident
GIS Acres 139,494
8/22/2015 1200
Day Operational Period 8/23/2015



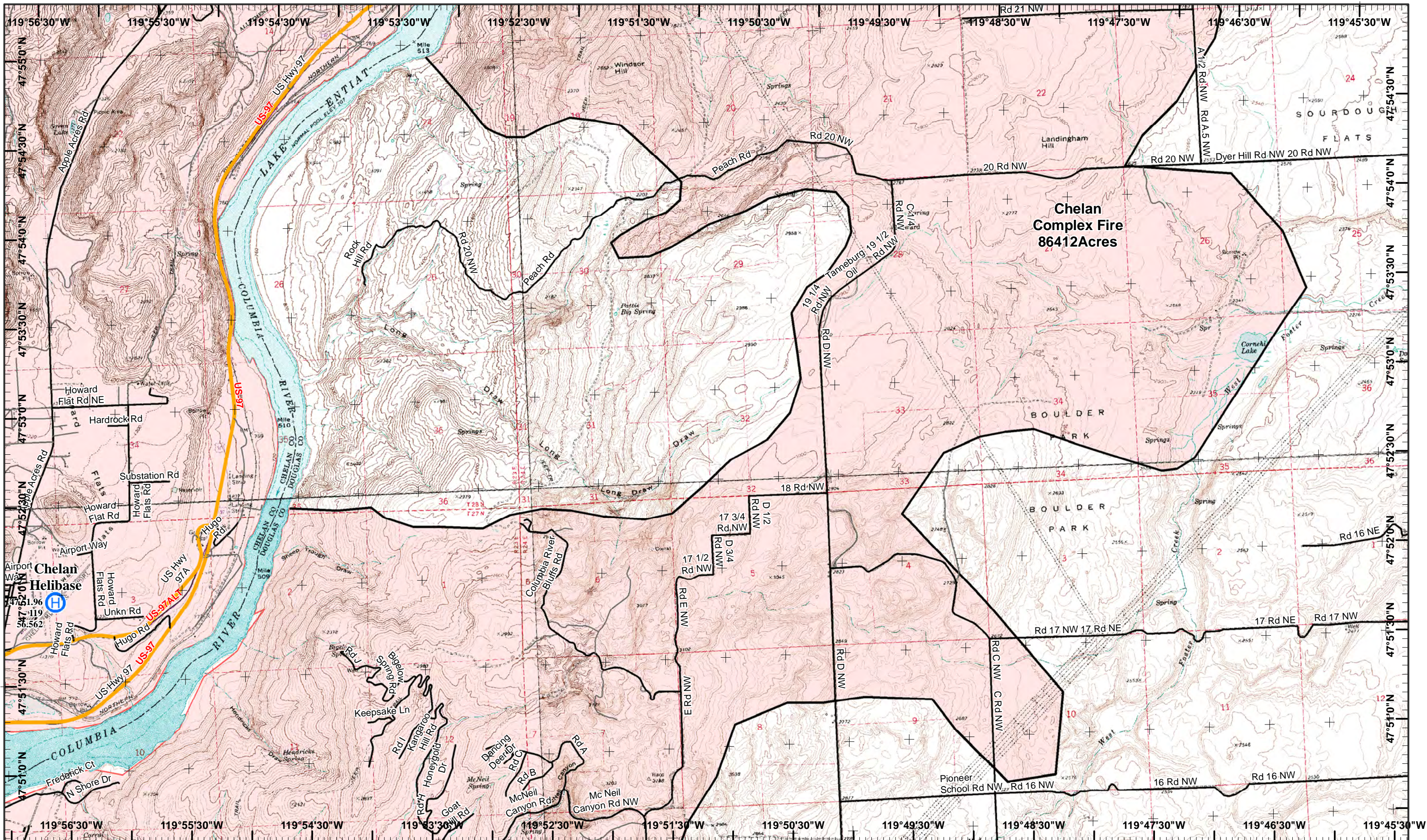
- Fire Origin
- Helibase
- Helispot
- Drop Point
- Completed Line

Neighboring Pages
West Page North Page 5 East Page 8
Douth Page 9

1	2	3	4
5	6	7	8
9	10		

Page 7
X Division
I Branch





Chelan Fires Incident
 Day Operational Period 8/23/2015

GIS Acres 139,494
 8/22/2015 1200
 Map Created 8/22/2015 18:55:51 PM RDC

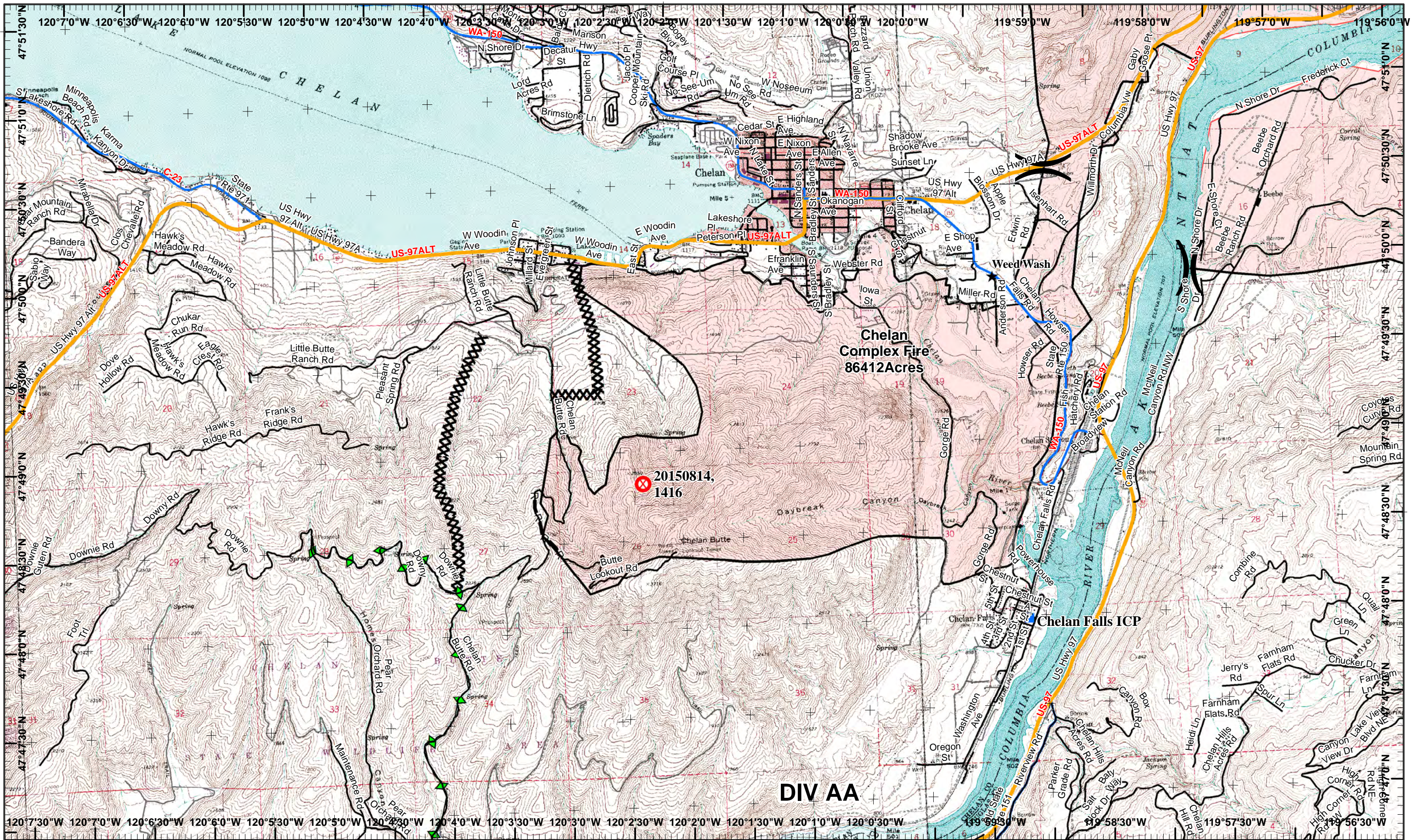


Neighboring Pages
 West Page 7 North Page 6 East Page
 South Page 10

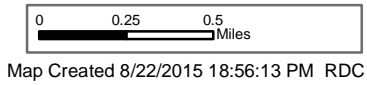
1	2	3	4
5	6	7	8
9	10		

Page 8
)(Division
 || Branch





Chelan Fires Incident
 GIS Acres 139,494
 8/22/2015 1200
 Day Operational Period 8/23/2015



- Fire Origin
- Incident Command Post
- Other
- Completed Dozer Line

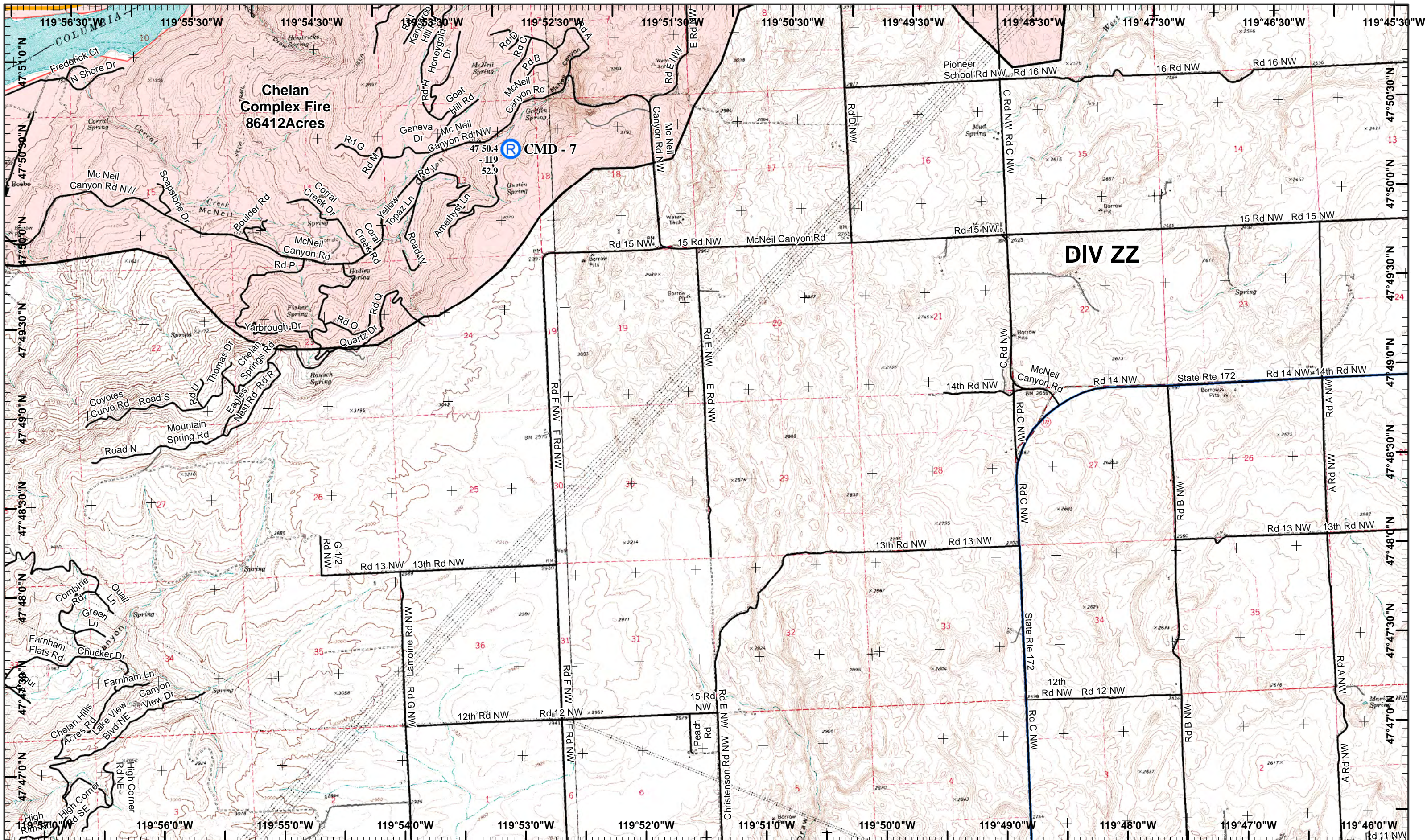
- Road as Completed Line
- Completed Line
- Plow Line

Neighboring Pages
 West Page North Page 7 East Page 10
 Douth Page

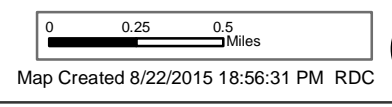
1	2	3	4
5	6	7	8
9	10		

Page 9
)(Division
 || Branch





Chelan Fires Incident
 GIS Acres 139,494
 8/22/2015 1200
 Day Operational Period 8/23/2015



Neighboring Pages

West Page 9	North Page 8	East Page
	Douth Page	

Page 10

1	2	3	4
5	6	7	8
9	10		

) Division
 [] Branch