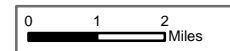


**Chelan Fires Incident Index Map**

GIS Acres 146,309  
8/23/2015 2128



Day Operational Period 8/25/2015

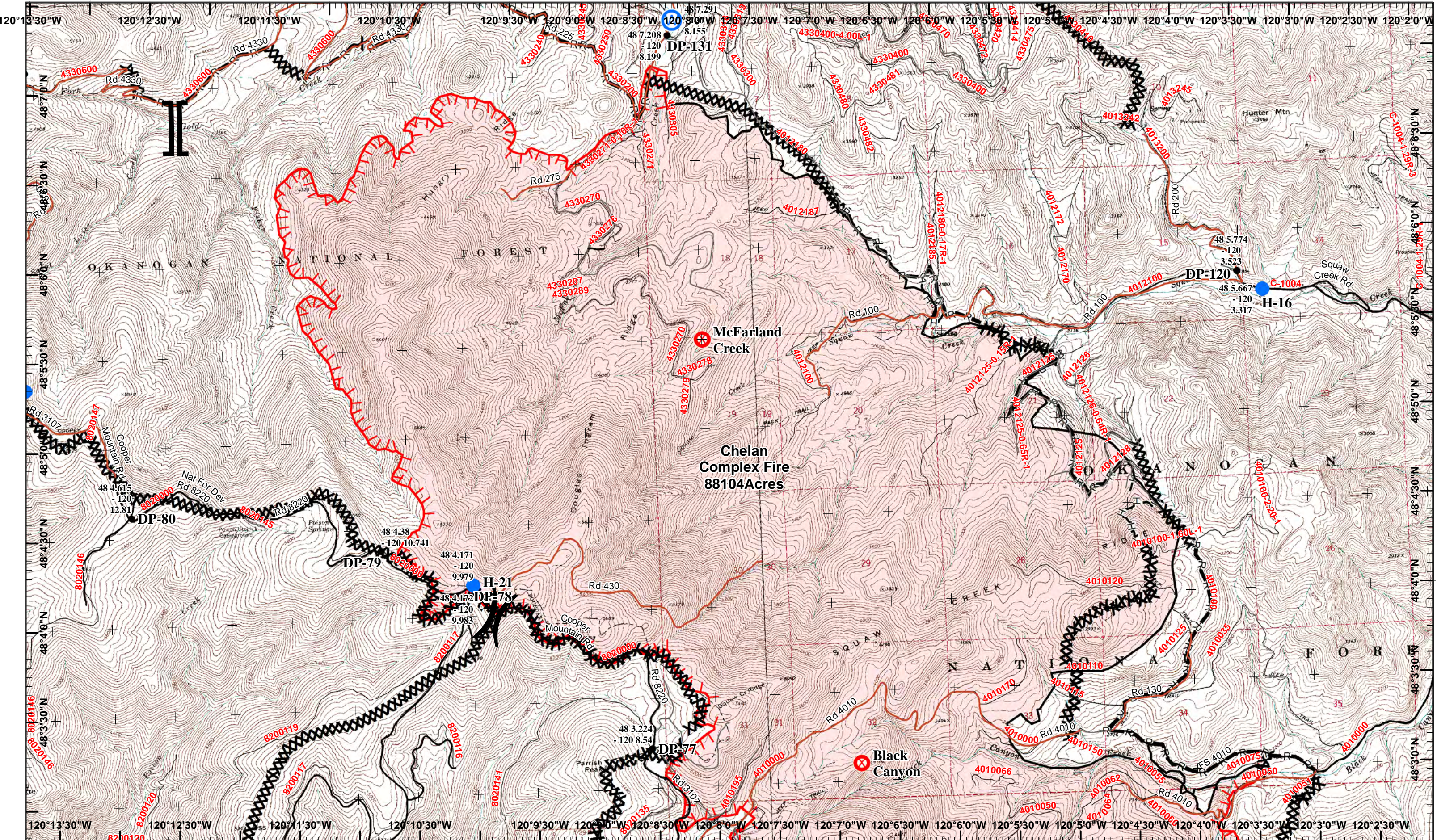
Map Created 8/24/2015 19:46:41 PM RDC

Uncontrolled Fire Edge

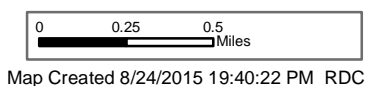
) Division  
] Branch







**Chelan Fires Incident**  
 GIS Acres 146,309  
 8/23/2015 2128  
 Day Operational Period 8/25/2015



- ⊗ Fire Origin
- ⊙ Water Source
- Completed Dozer Line
- Hand Line
- Helispot
- ⊙ Drop Point
- Road as Completed Line
- Completed Line
- Uncontrolled Fire Edge

Neighboring Pages

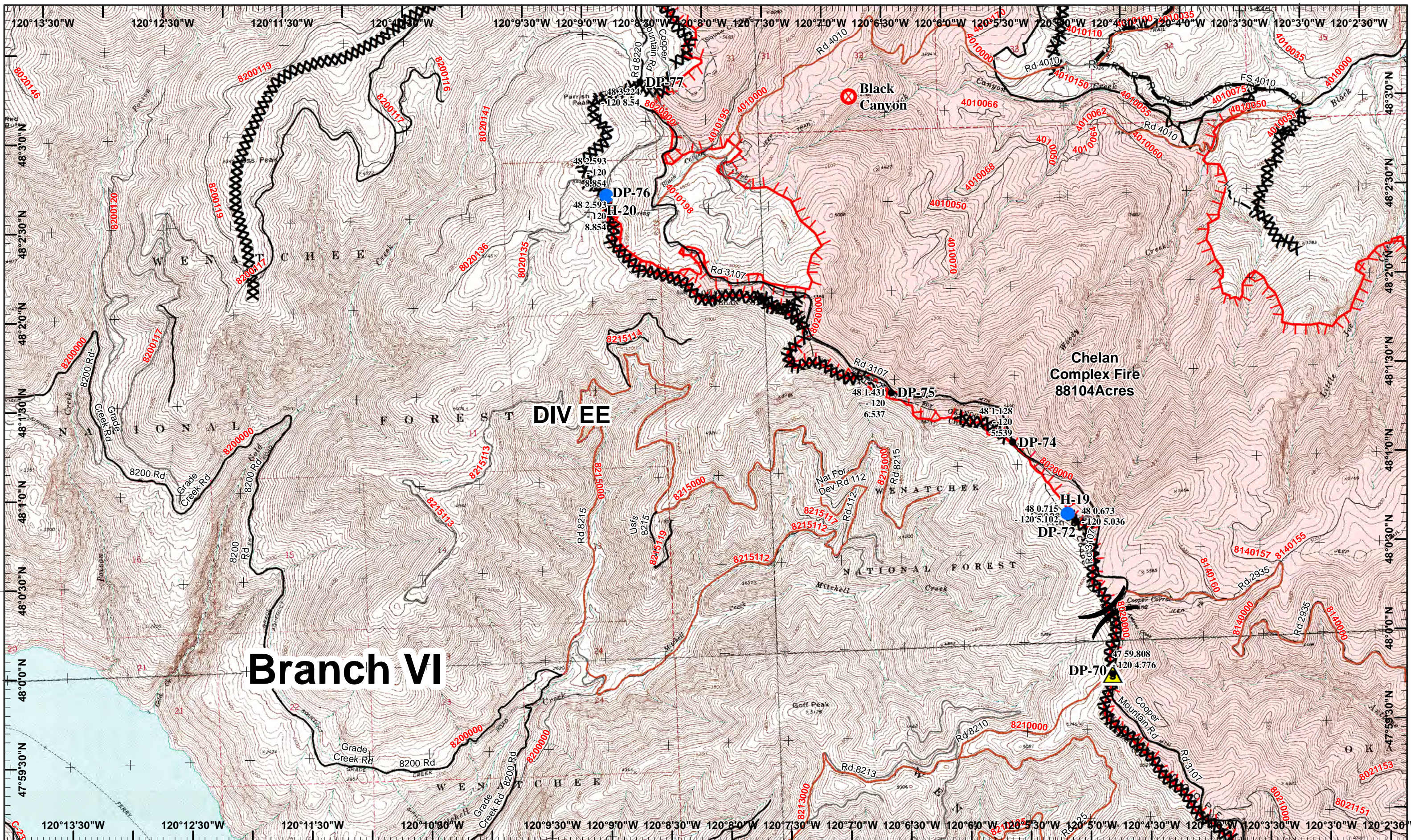
West Page	North Page	East Page
	Douth Page 2	

1	2	3	4
5	6	7	8
9	10		

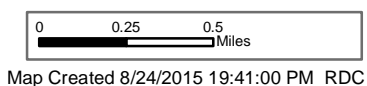
Page 1  
 )( Division  
 || Branch







**Chelan Fires Incident**  
 GIS Acres 146,309  
 8/23/2015 2128  
 Day Operational Period 8/25/2015



- North
- Fire Origin
- Helispot
- Drop Point
- Safety Zone
- Completed Dozer Line
- R Road as Completed Line
- H Hand Line
- Completed Line
- Uncontrolled Fire Edge

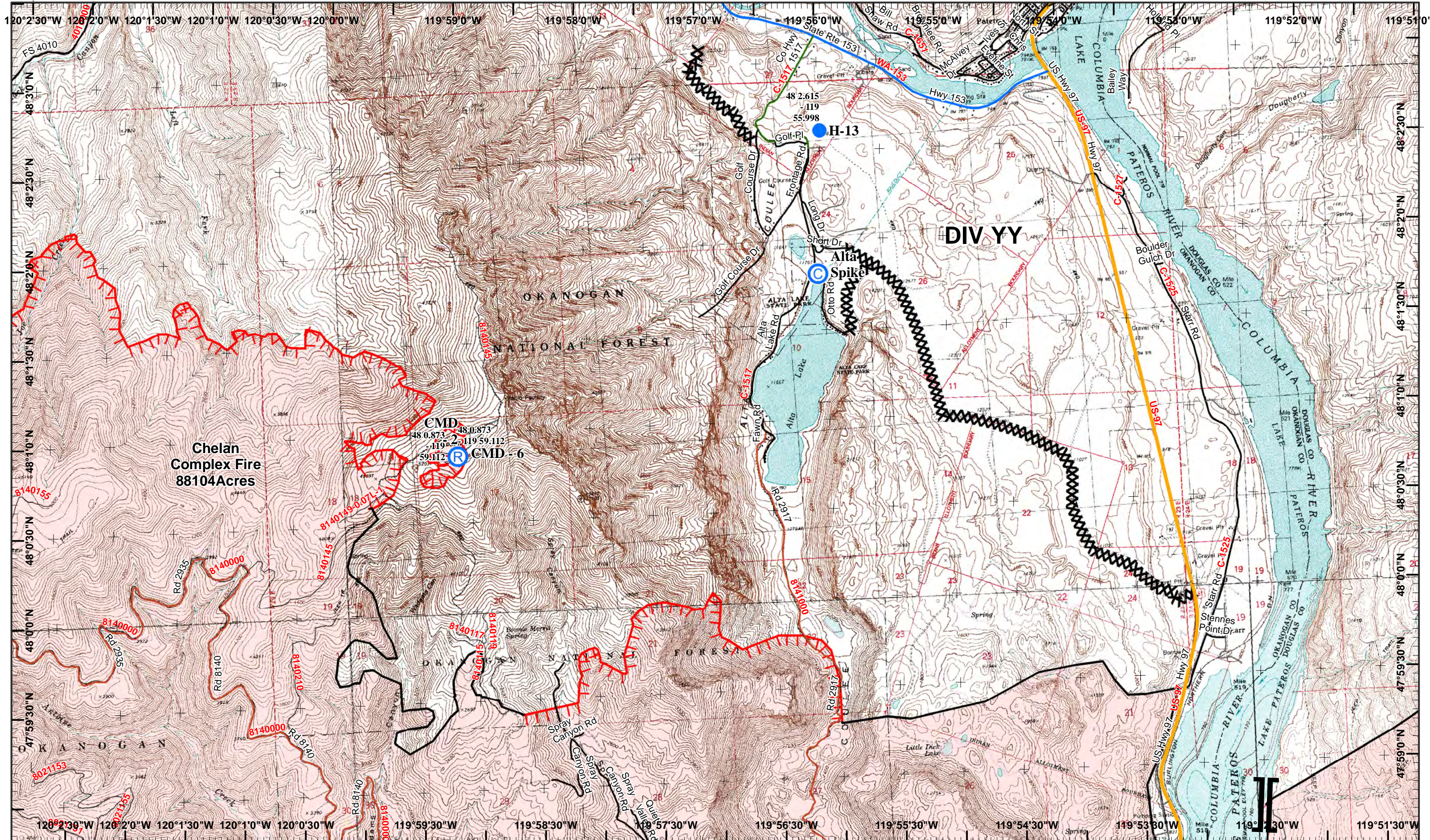
Neighboring Pages

West Page	North Page 1 Douth Page	East Page 3
-----------	----------------------------	-------------

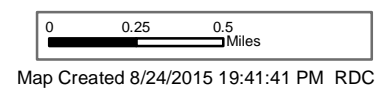
1	2	3	4
5	6	7	8
9	10		

Page 2  
 )( Division  
 || Branch





**Chelan Fires Incident**  
 GIS Acres 146,309  
 8/23/2015 2128  
 Day Operational Period 8/25/2015



Helispot  
 Camp  
 Completed Dozer Line  
 Uncontrolled Fire Edge  
 Repeater  
 Completed Line

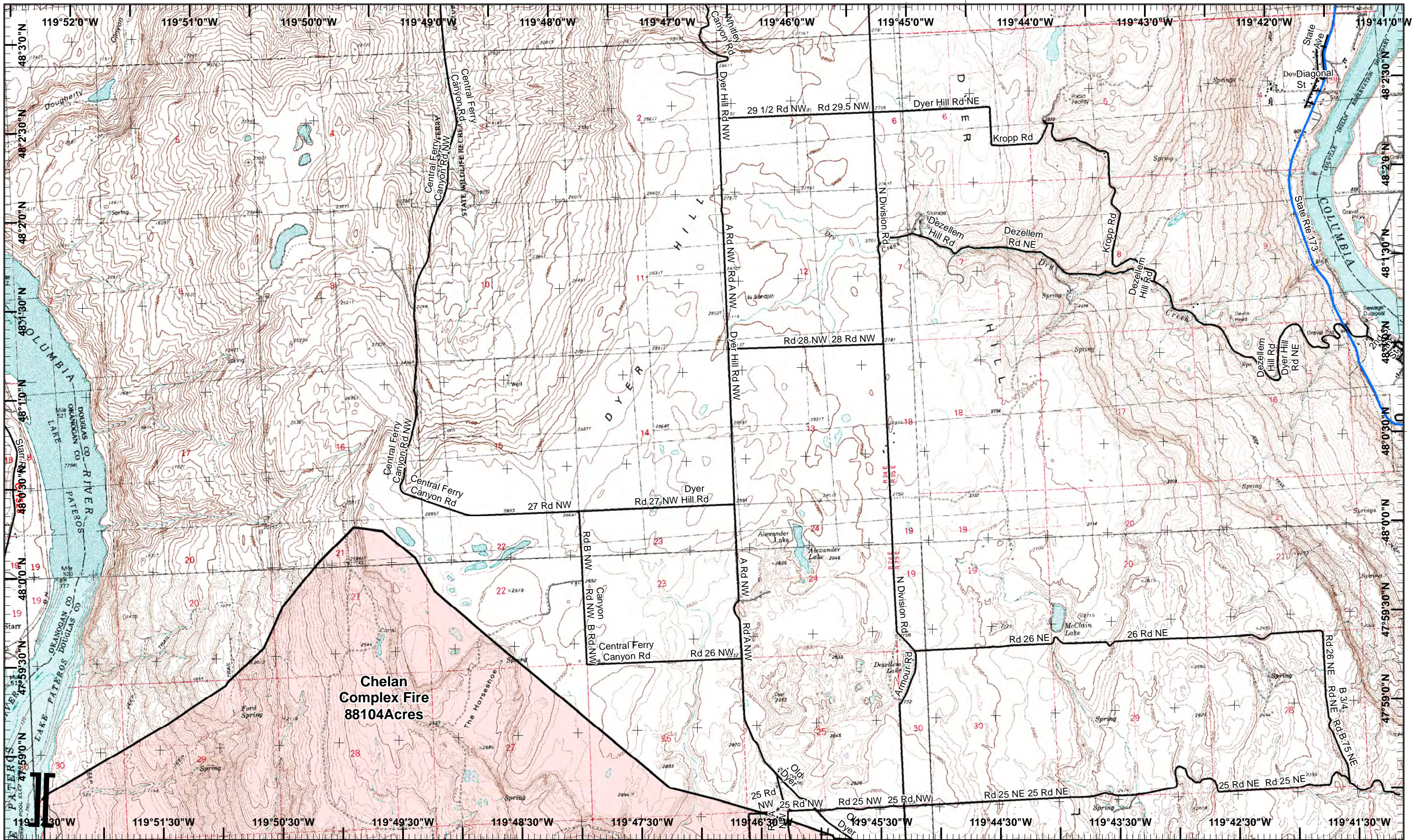
Neighboring Pages  
 West Page 2 North Page  
 Douth Page 5 East Page 4

1	2	3	4
5	6	7	8
9	10		

Page 3  
 )( Division  
 || Branch

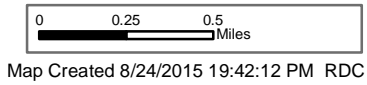






**Chelan  
Complex Fire  
88104Acres**

**Chelan Fires Incident**  
 GIS Acres 146,309  
 8/23/2015 2128  
 Day Operational Period 8/25/2015



Completed Line

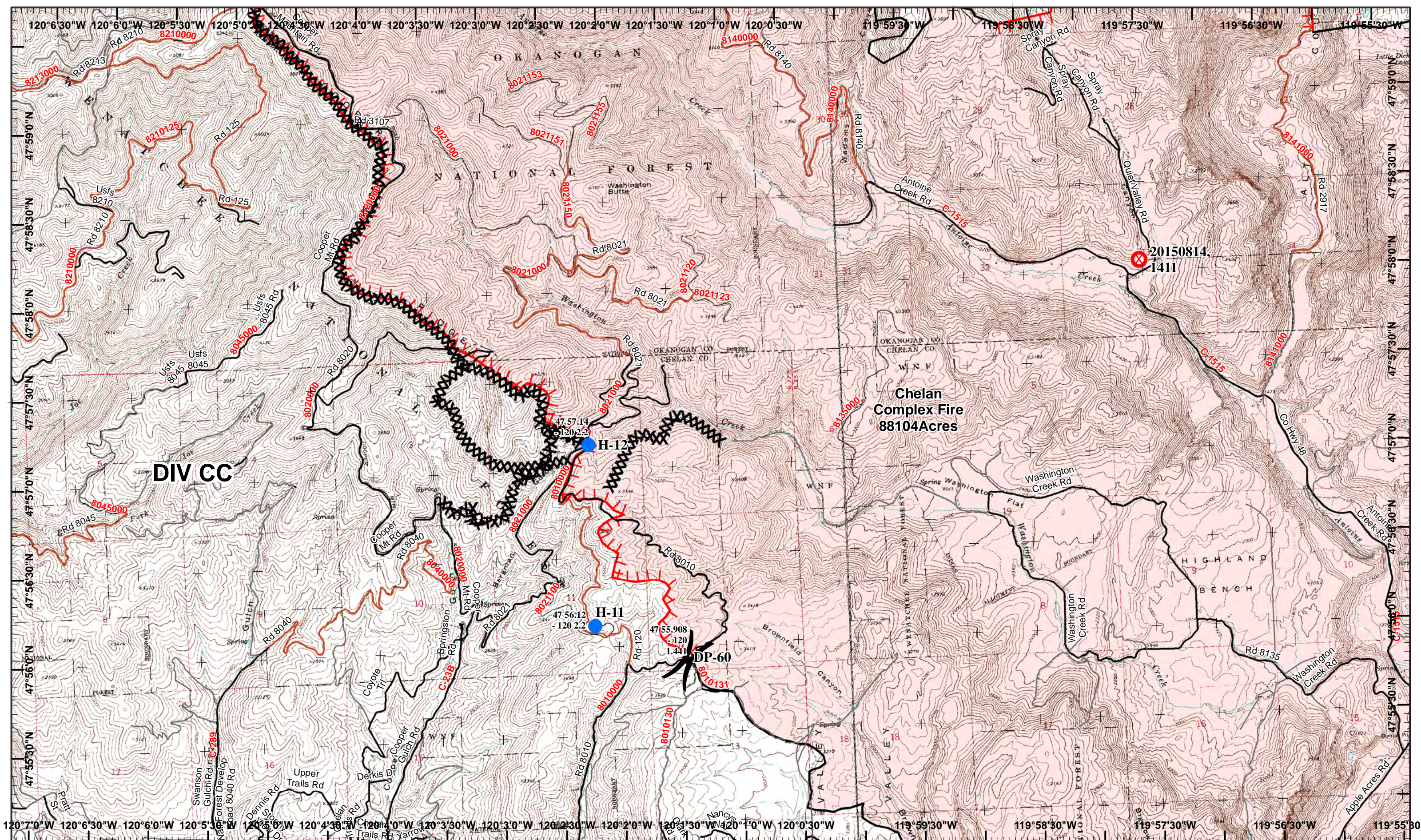
Neighboring Pages  
 West Page 3 North Page  
 Douth Page 6 East Page

1	2	3	4
5	6	7	8
9	10		

Page 4  
 )( Division  
 || Branch



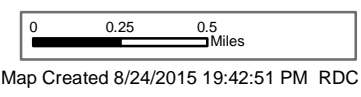




**DIV CC**

**Chelan Complex Fire  
88104 Acres**

**Chelan Fires Incident**  
GIS Acres 146,309  
8/23/2015 2128  
Day Operational Period 8/25/2015



- North
- Fire Origin
- Helispot
- Drop Point
- Completed Dozer Line
- Uncontrolled Fire Edge

Neighboring Pages

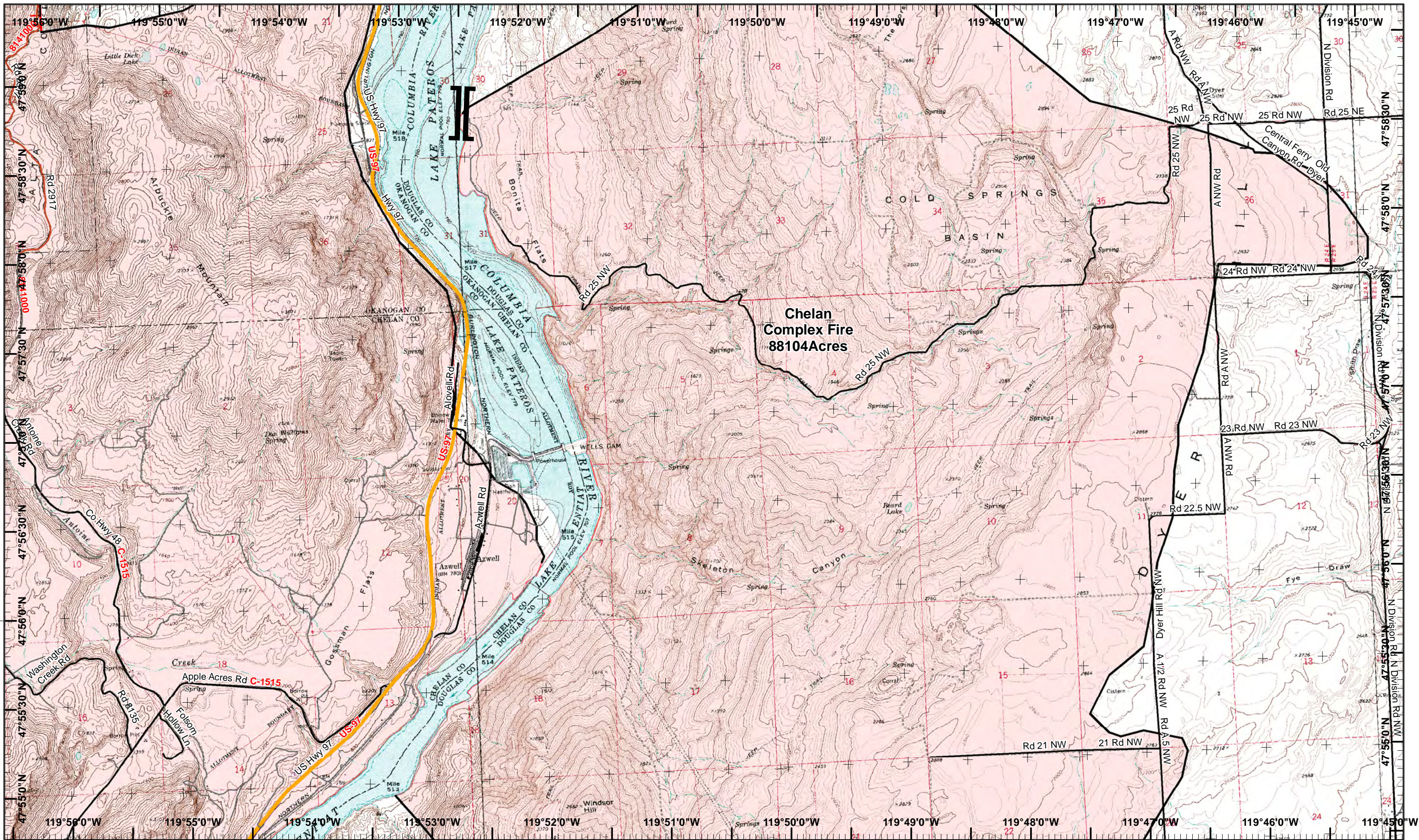
West Page	North Page 3	East Page 6
	Douth Page 7	

1	2	3	4
5	6	7	8
9	10		

Page 5  
() Division  
[] Branch



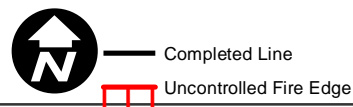




**Chelan Complex Fire**  
88104 Acres

**Chelan Fires Incident**  
GIS Acres 146,309  
8/23/2015 2128  
Day Operational Period 8/25/2015

0 0.25 0.5 Miles  
Map Created 8/24/2015 19:43:22 PM RDC



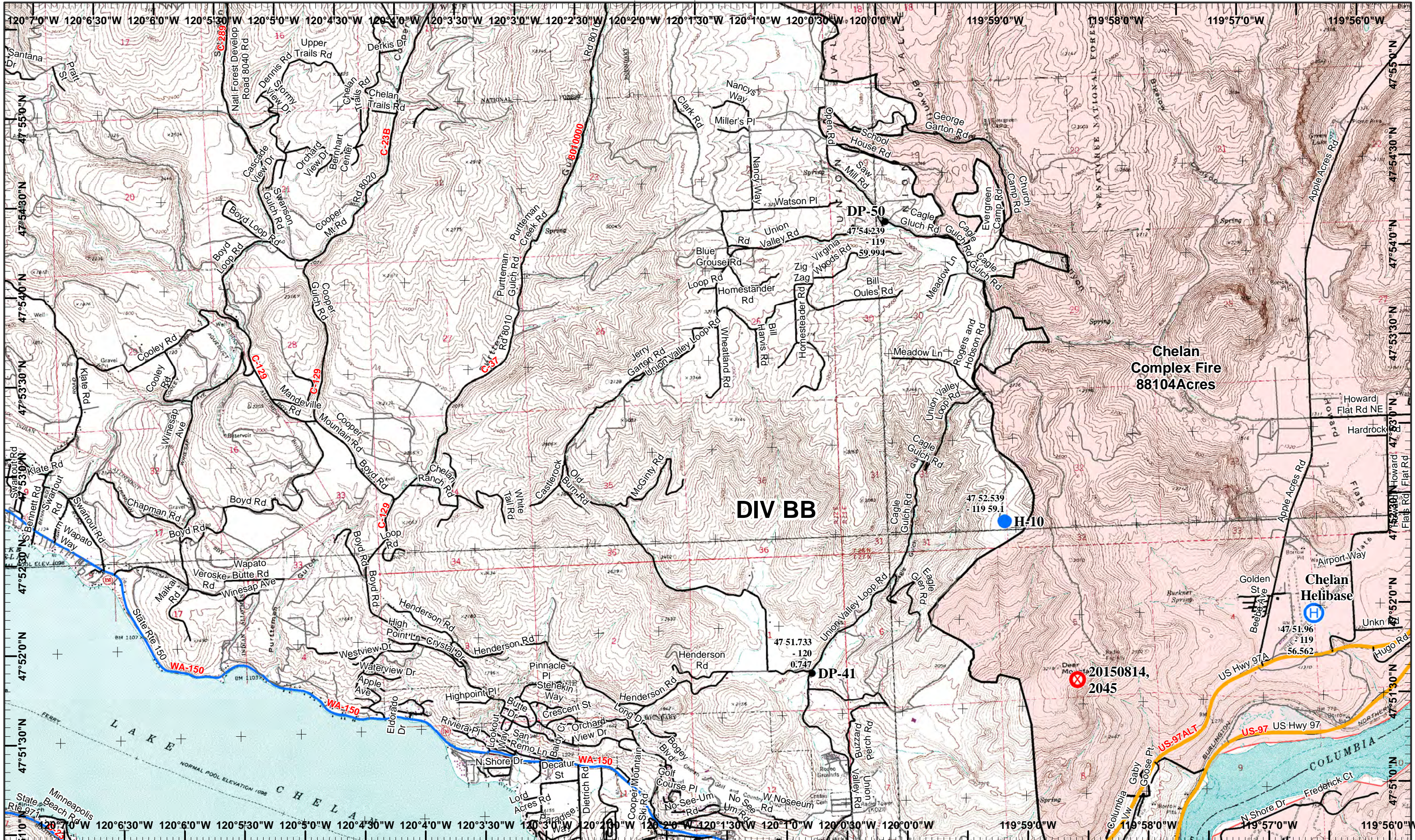
Neighboring Pages  
West Page 5 North Page 4  
Douth Page 8 East Page

1	2	3	4
5	6	7	8
9	10		

Page 6  
) Division  
| Branch





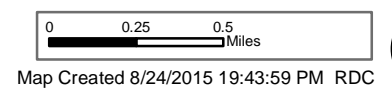


**Chelan Complex Fire**  
88104 Acres

**DIV BB**

**DP-41**

**Chelan Fires Incident**  
GIS Acres 146,309  
8/23/2015 2128  
Day Operational Period 8/25/2015



- Fire Origin
- Helibase
- Helispot
- Drop Point
- Completed Line

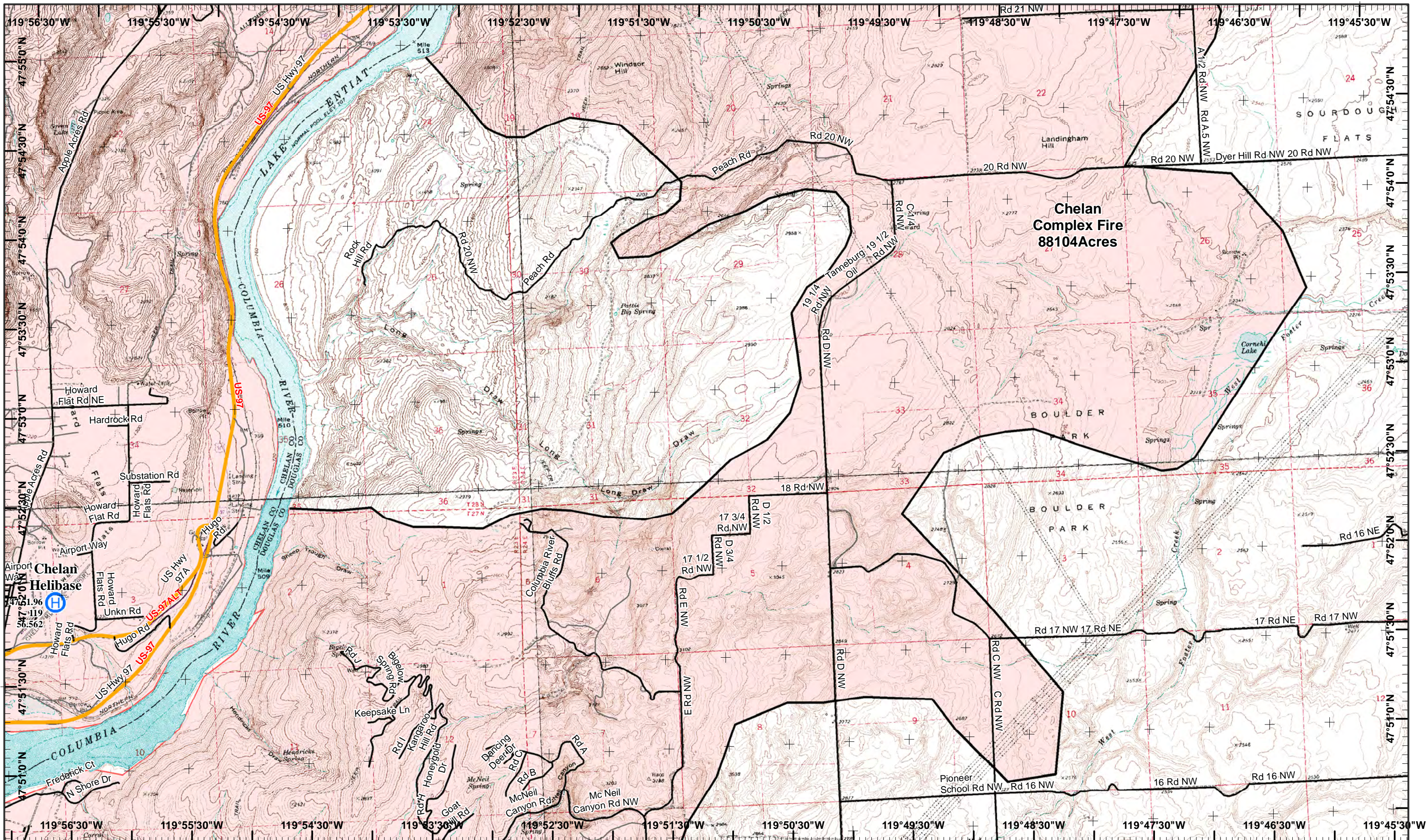
Neighboring Pages  
West Page North Page 5 East Page 8  
Douth Page 9

1	2	3	4
5	6	7	8
9	10		

Page 7  
X Division  
I Branch







**Chelan Fires Incident**  
 Day Operational Period 8/25/2015

GIS Acres 146,309  
 8/23/2015 2128  
 Map Created 8/24/2015 19:44:29 PM RDC



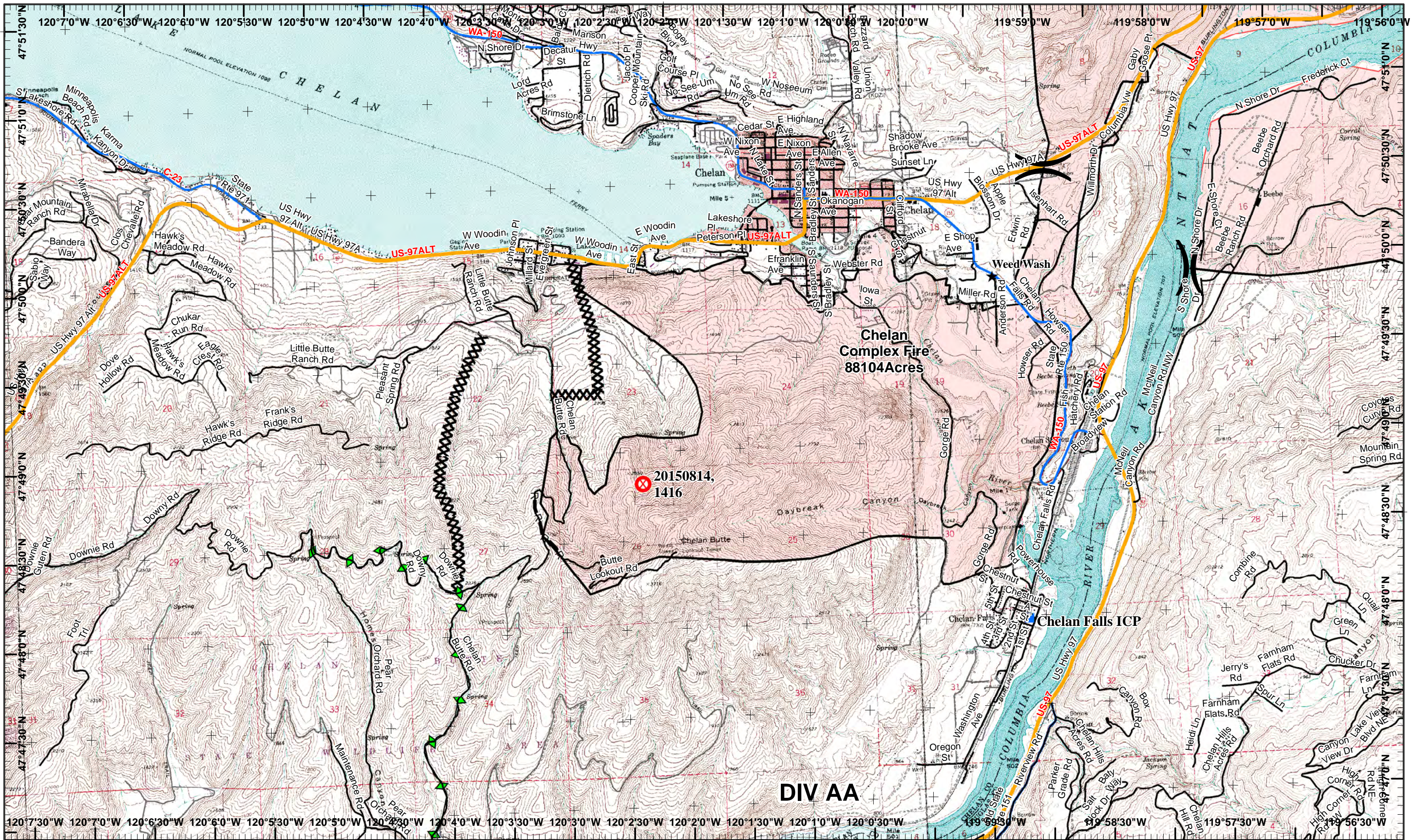
Neighboring Pages  
 West Page 7 North Page 6 East Page  
 South Page 10

1	2	3	4
5	6	7	8
9	10		

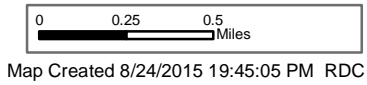
Page 8  
 )( Division  
 || Branch







**Chelan Fires Incident**  
 GIS Acres 146,309  
 8/23/2015 2128  
 Day Operational Period 8/25/2015



- Fire Origin
- Incident Command Post

- Other
- Completed Dozer Line

- Road as Completed Line
- Completed Line
- Plow Line

Neighboring Pages

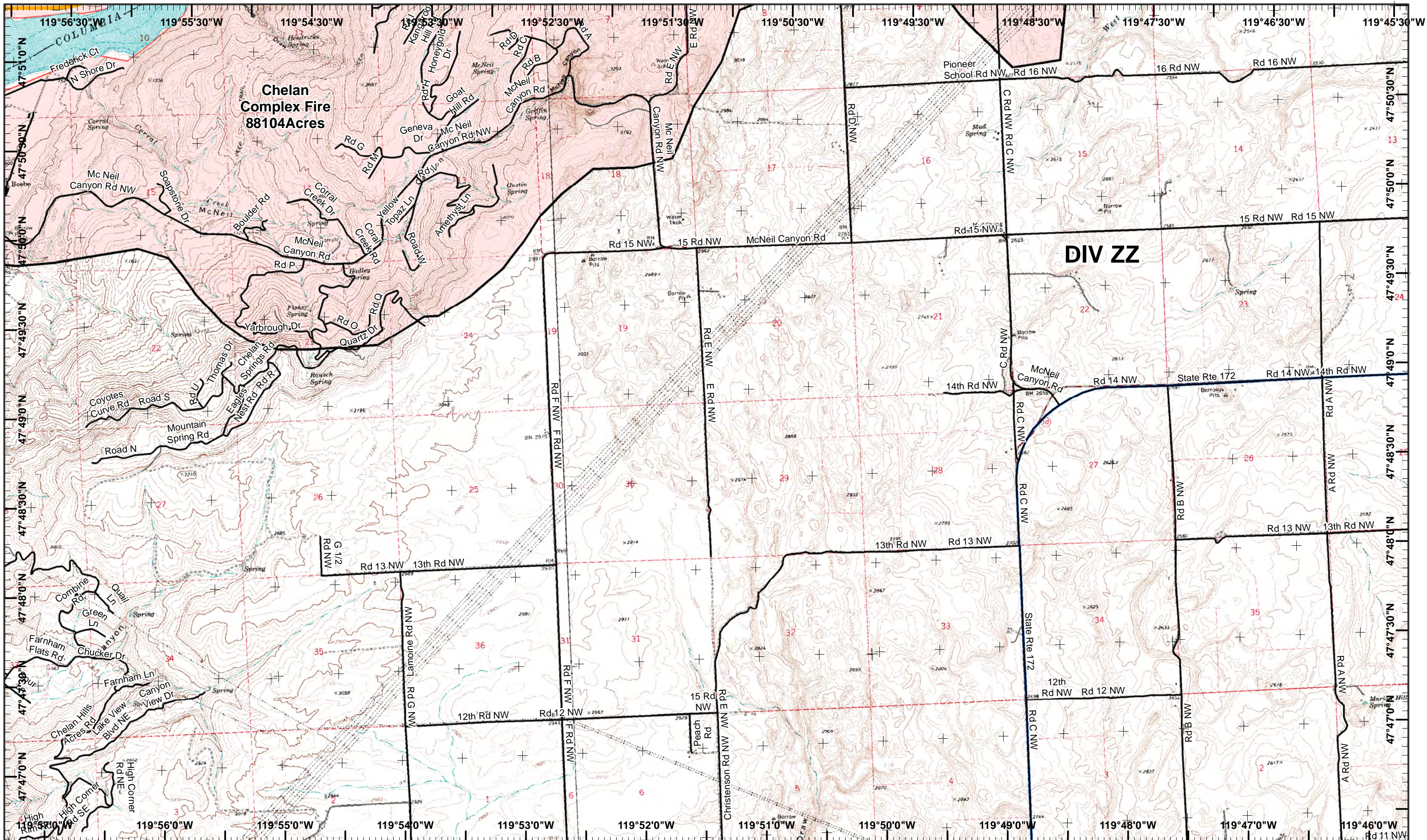
West Page	North Page 7	East Page 10
	Douth Page	

1	2	3	4
5	6	7	8
9	10		

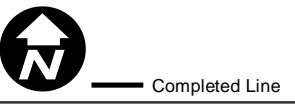
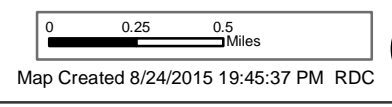
Page 9  
 )( Division  
 || Branch







**Chelan Fires Incident**  
 GIS Acres 146,309  
 8/23/2015 2128  
 Day Operational Period 8/25/2015



Neighboring Pages

West Page 9	North Page 8	East Page
	Douth Page	

Page 10

1	2	3	4
5	6	7	8
9	10		

) Division  
 [] Branch