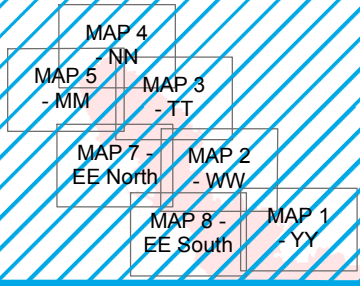
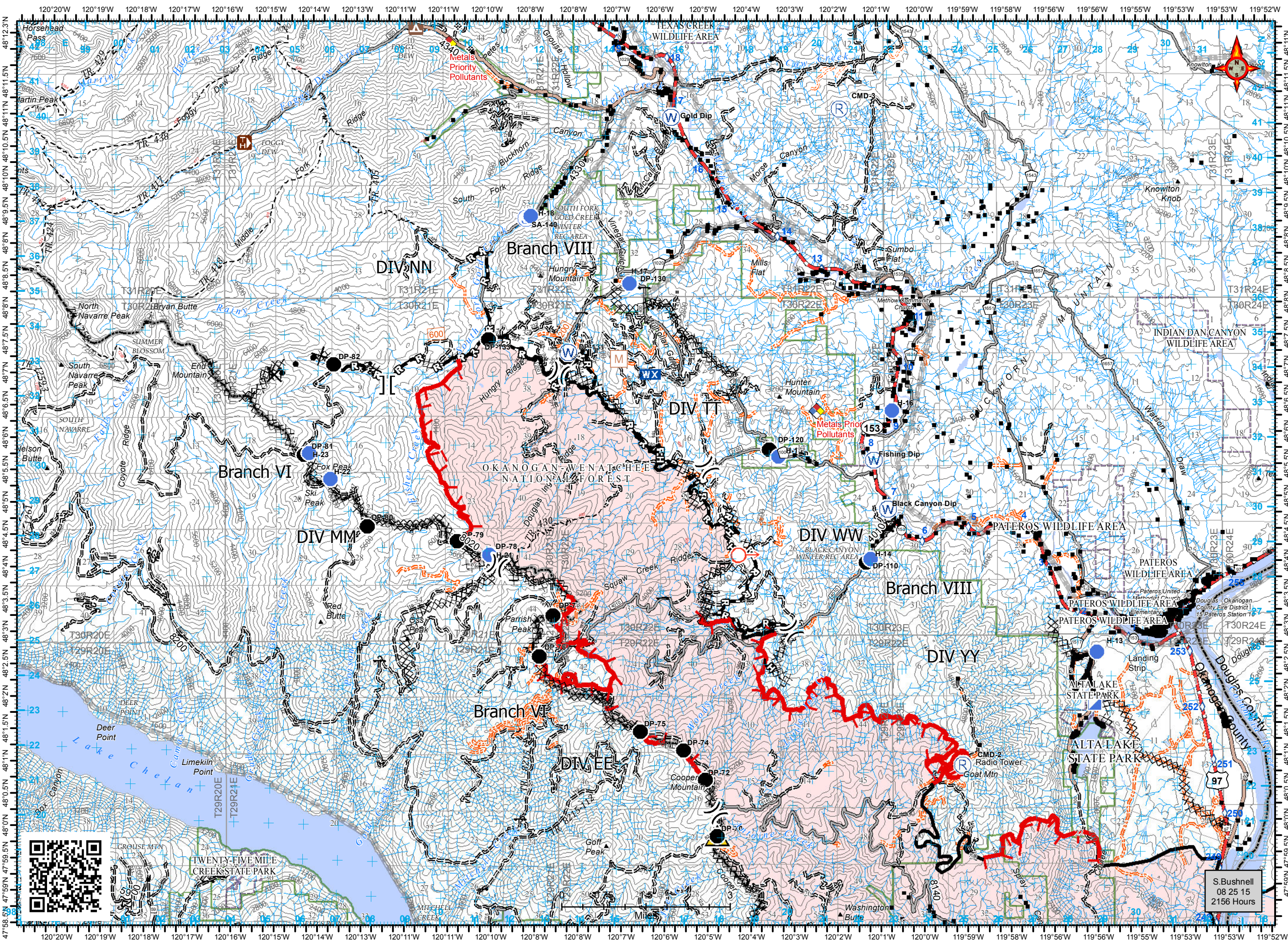


**CHELAN COMPLEX
BRANCH VIII
WA-SES-000701
IAP Map
BRANCH VI / VIII
08/26/2015 Day Shift**

- Division
- Branch
- Drop Point
- Helispot
- Incident Command Post
- RAWS
- Repeater
- Safety Zone
- Spot Fire
- Staging Area
- Water Source
- Structures
- Contaminated Site
- Mine Shaft (Hazard)
- Barrier
- Gate
- Uncontrolled Fire Edge
- Completed Dozer Line
- Completed Line
- Hand Line
- Road as Completed Line






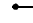





WEATHER
Temp: 70-75
RH: 27-32
Wind: Downslope (am)
Upslope (pm) 3-6
Haines: 4



S. Bushnell
08 25 15
2156 Hours

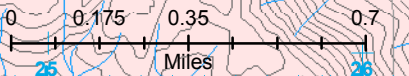
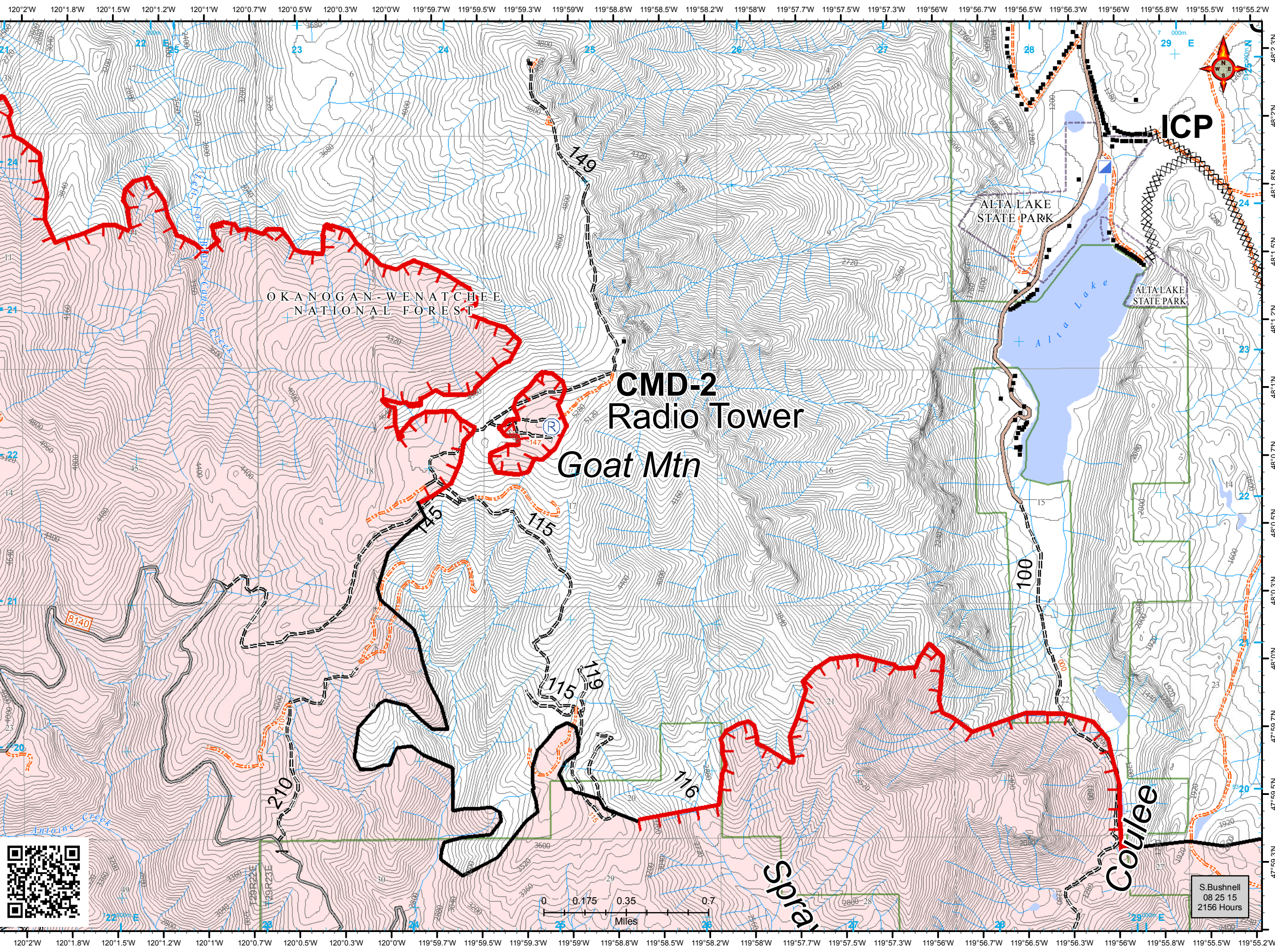
Datum: North American 1983 HARN

**CHELAN COMPLEX
BRANCH VIII
WA-SES-000701
IAP Map
MAP 1 - YY
08/26/2015 Day Shift**

-  Incident Command Post
-  Repeater
-  Structures
-  Gate
-  Uncontrolled Fire Edge
-  Completed Dozer Line
-  Completed Line
-  Power Transmission Line
-  Contours 100-foot

MAP 4 - NN	MAP 3 - TT
MAP 5 - MM	MAP 2 - WW
MAP 7 - EE North	MAP 1 - YY
MAP 8 - EE South	

WEATHER
Temp: 70-75
RH: 27-32
Wind: Downslope (am)
Upslope (pm) 3-6
Haines: 4



S. Bushnell
08 25 15
2156 Hours

Datum: North American 1983 HARN

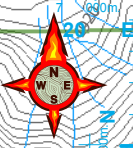
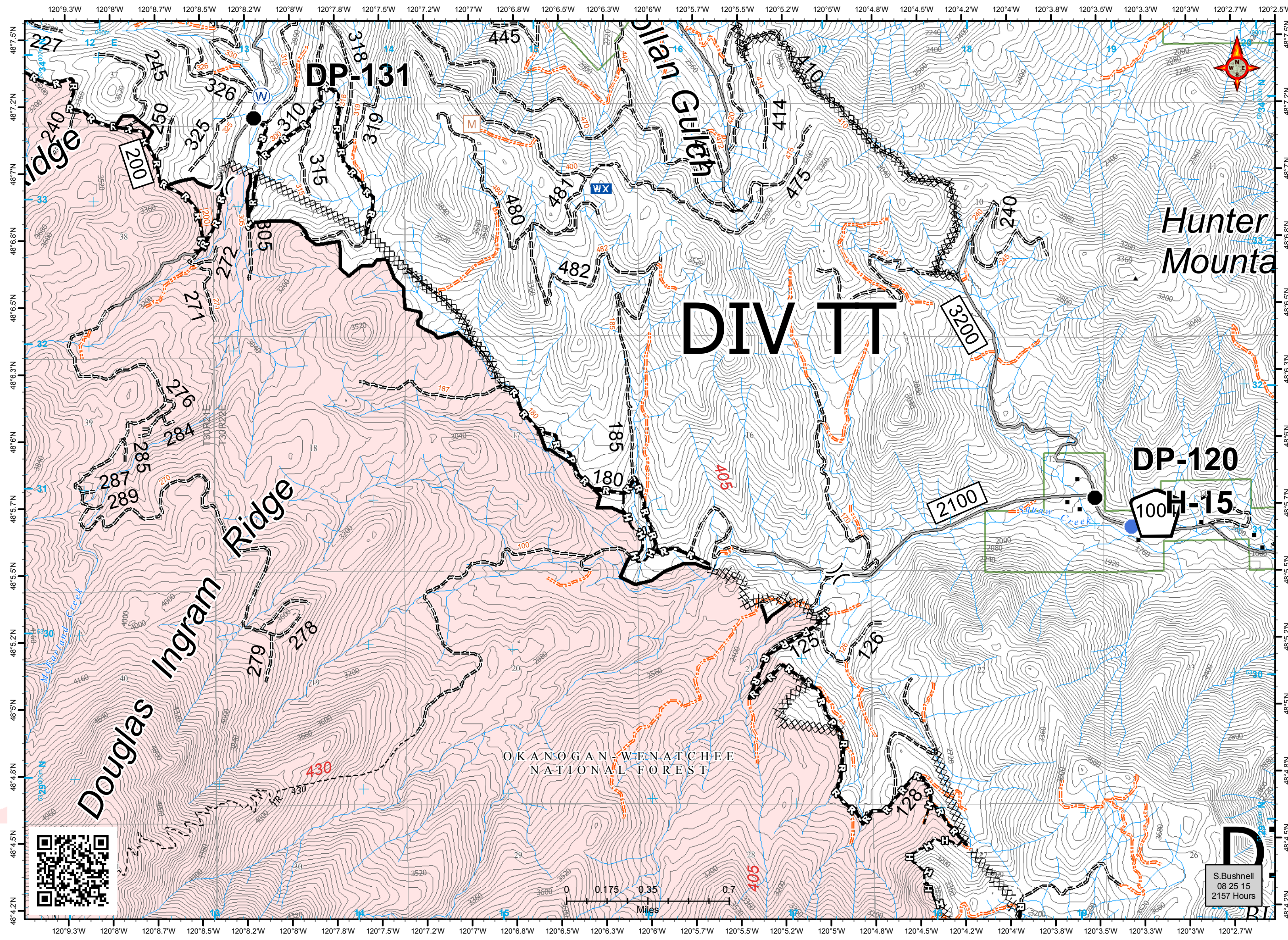
**CHELAN COMPLEX
BRANCH VIII
WA-SES-000701
IAP Map
MAP 3 - TT
08/26/2015 Day Shift**

- Division
- Drop Point
- Helispot
- RAWS
- Spot Fire
- Water Source
- Structures
- Mine Shaft (Hazard)
- Gate
- Completed Dozer Line
- Completed Line
- Hand Line
- Road as Completed Line
- Power Transmission Line
- Contours 100-foot

MAP 4 - NN
MAP 5 - MM
MAP 3 - TT
MAP 7 - EE North
MAP 2 - WW
MAP 8 - EE South
MAP 1 - YY

WEATHER
Temp: 70-75
RH: 27-32
Wind: Downslope (am)
Upslope (pm) 3-6
Haines: 4

Datum: North American 1983 HARN



D
S. Bushnell
08 25 15
2157 Hours

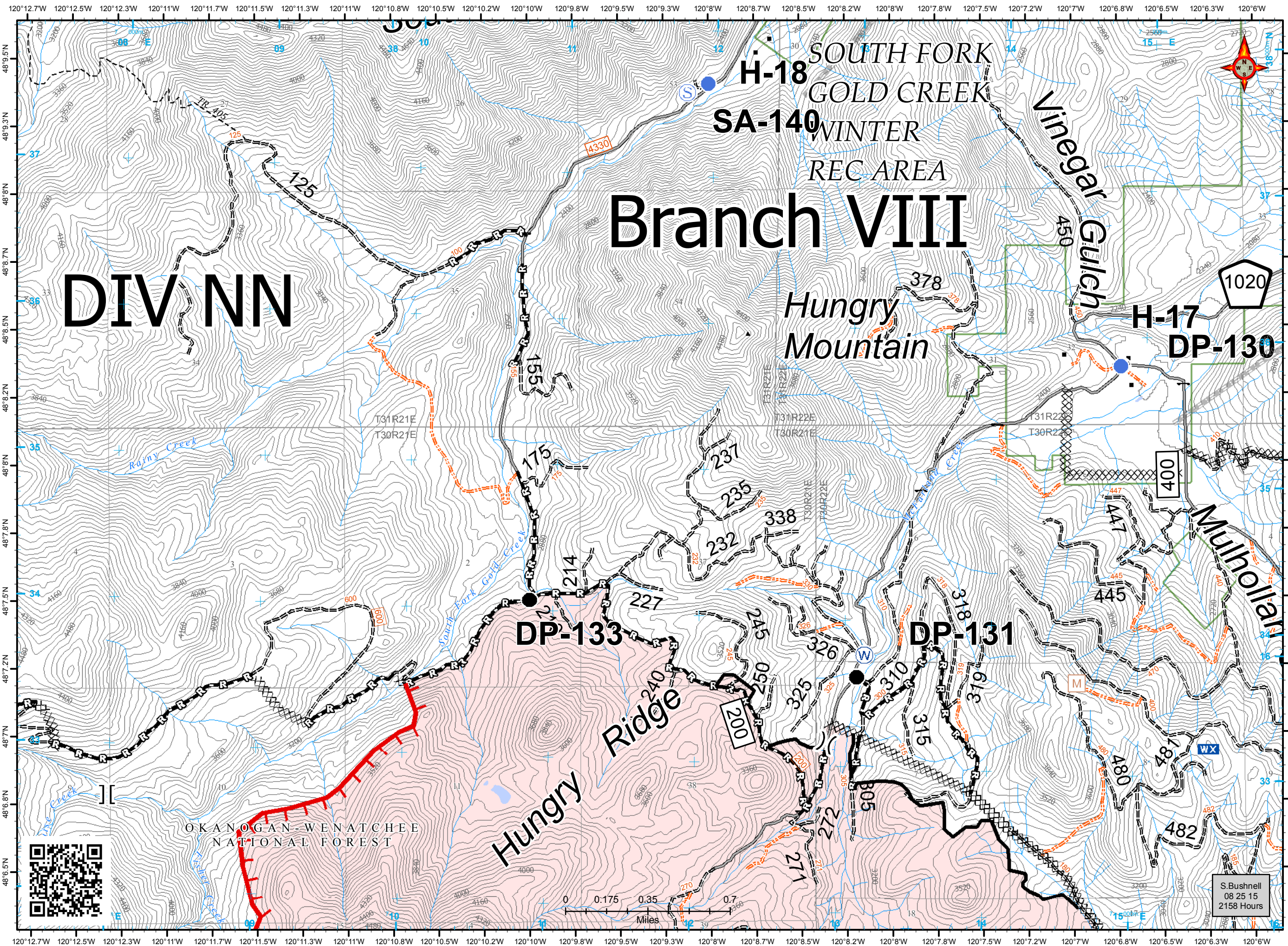
**CHELAN COMPLEX
BRANCH VIII
WA-SES-000701
IAP Map
MAP 4 - NN
08/26/2015 Day Shift**

-)(Division
-][Branch
- Drop Point
- Helispot
- WX RAWS
- Ⓢ Staging Area
- Ⓜ Water Source
- Structures
- M Mine Shaft (Hazard)
- ⌄ Gate
- ┌ Uncontrolled Fire Edge
- XXXX Completed Dozer Line
- Completed Line
- R Road as Completed Line
- Power Transmission Line
- Contours 100-foot

MAP 4 - NN
 MAP 5 - MM MAP 3 - TT
 MAP 7 - EE North MAP 2 - WW
 MAP 8 - EE South MAP 1 - YY

WEATHER
 Temp: 70-75
 RH: 27-32
 Wind: Downslope (am)
 Upslope (pm) 3-6
 Haines: 4

Datum: North American 1983 HARN



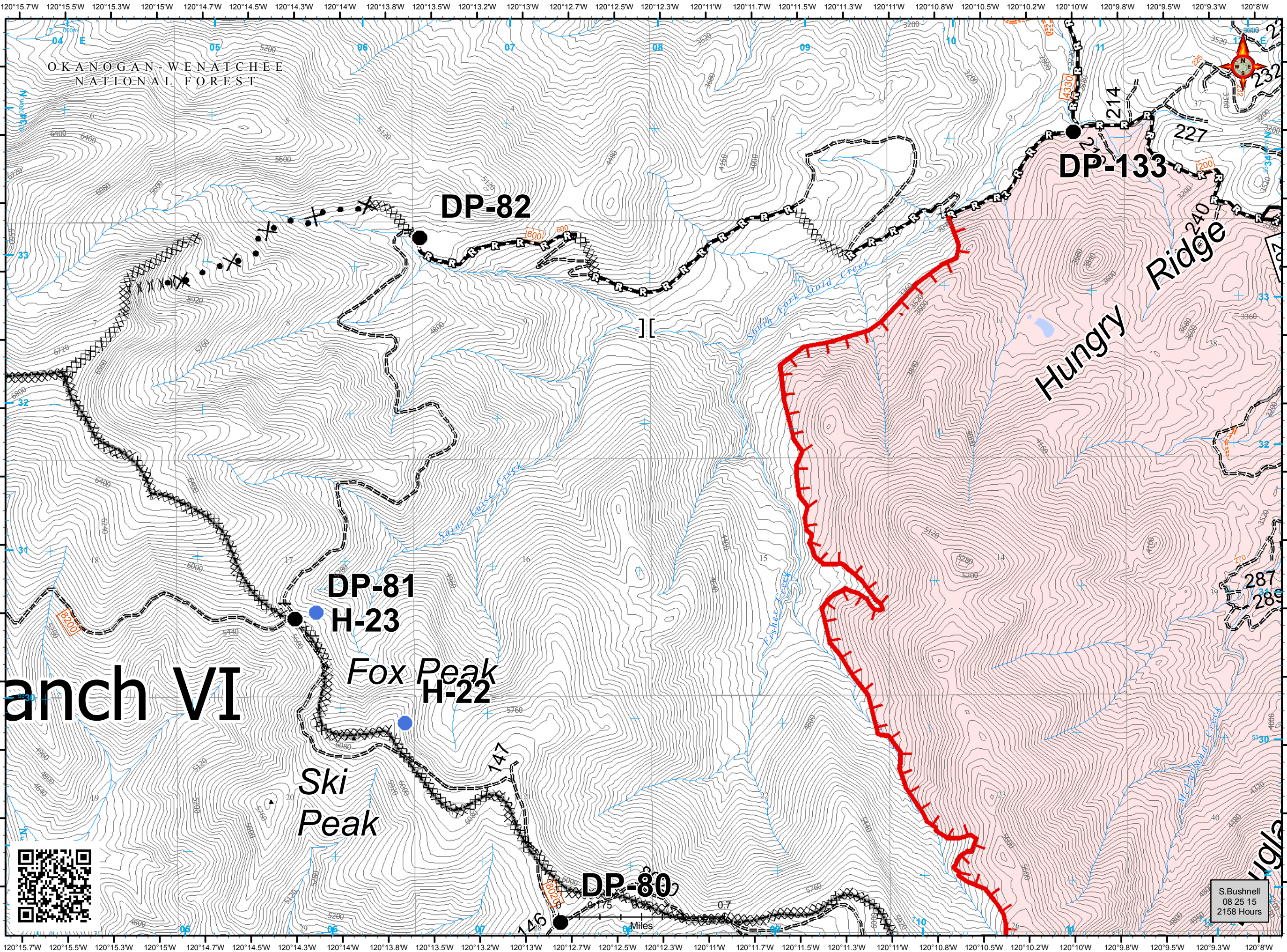
S. Bushnell
 08 25 15
 2158 Hours

**CHELAN COMPLEX
BRANCH VIII
WA-SES-000701
IAP Map
MAP 5 - MM
08/26/2015 Day Shift**

- Branch
- Drop Point
- Helispot
- Structures
- Gate
- Uncontrolled Fire Edge
- Completed Dozer Line
- Completed Line
- Road as Completed Line
- Proposed Dozer Line
- Ridge / Geographic Feature
- Power Transmission Line
- Contours 100-foot

MAP 4 - NN
 MAP 5 - MM
 MAP 3 - TT
 MAP 7 - EE North
 MAP 2 - WW
 MAP 8 - EE South
 MAP 1 - YY

WEATHER
 Temp: 70-75
 RH: 27-32
 Wind: Downslope (am)
 Upslope (pm) 3-6
 Haines: 4



S. Bushnell
 08 25 15
 2158 Hours

Datum: North American 1983 HARN

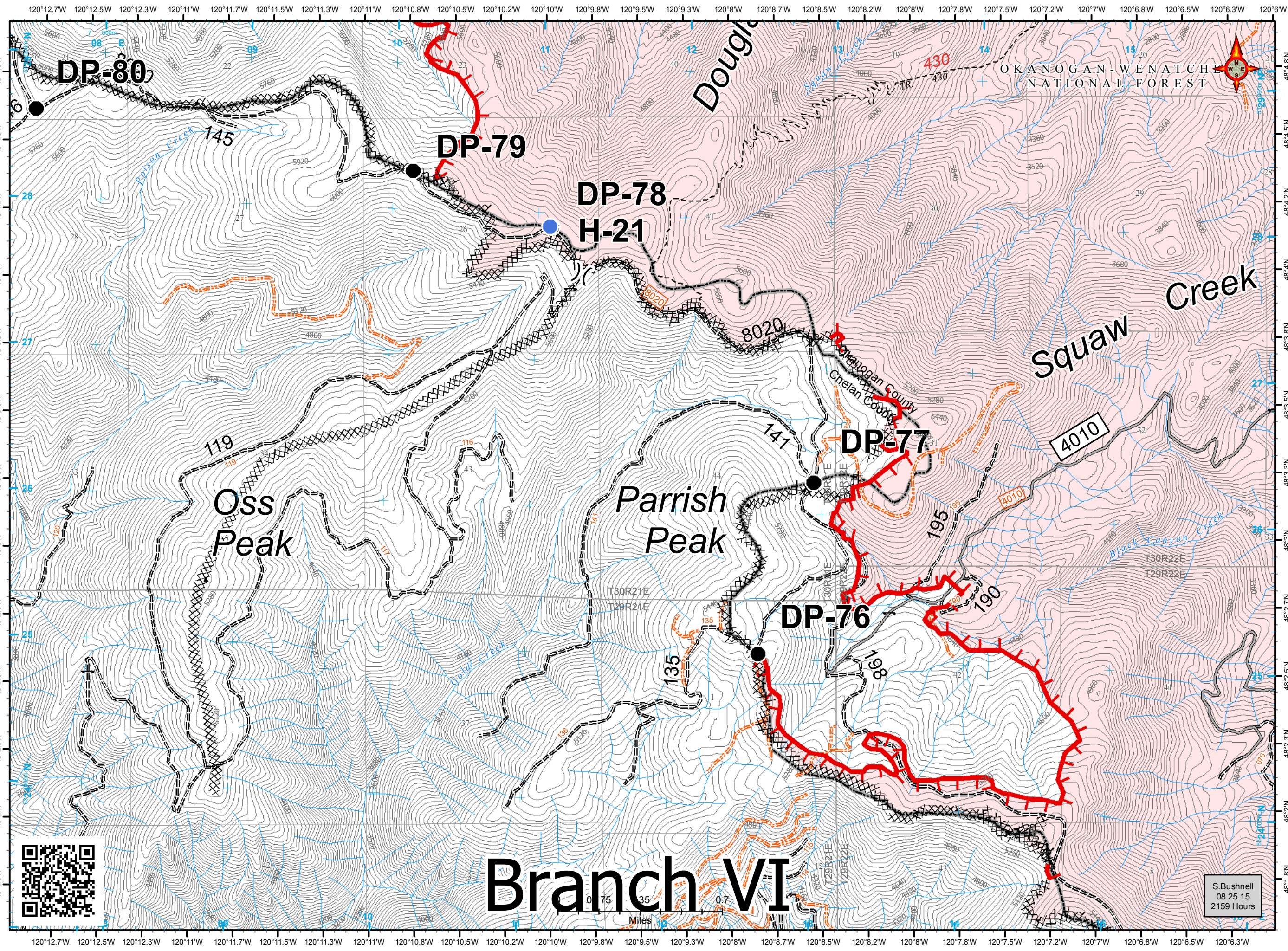
**CHELAN COMPLEX
BRANCH VIII
WA-SES-000701
IAP Map
MAP 7 - EE North
08/26/2015 Day Shift**

-) (Division
- Drop Point
- Helispot
- Structures
- Gate
- ┌ Uncontrolled Fire Edge
- XXXX Completed Dozer Line
- ▬ Power Transmission Line
- Contours 100-foot

MAP 4 - NN	MAP 3 - TT
MAP 5 - MM	MAP 2 - WW
MAP 7 - EE North	MAP 1 - YY
MAP 8 - EE South	

WEATHER
Temp: 70-75
RH: 27-32
Wind: Downslope (am)
Upslope (pm) 3-6
Haines: 4

Datum: North American 1983 HARN



Branch VI

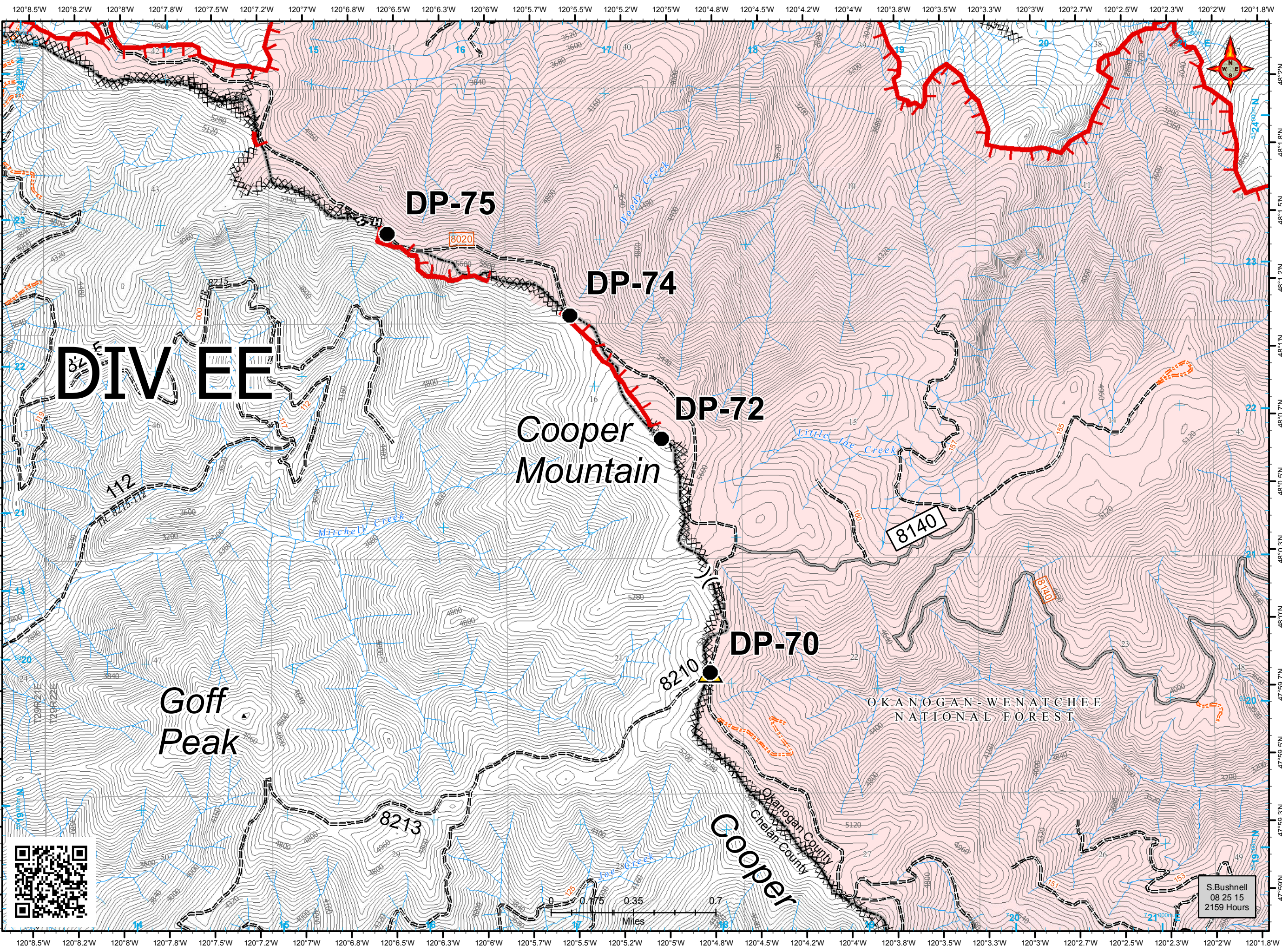
S. Bushnell
08 25 15
2159 Hours

**CHELAN COMPLEX
BRANCH VIII
WA-SES-000701
IAP Map
MAP 8 - EE South
08/26/2015 Day Shift**

- Division
- Drop Point
- Safety Zone
- Structures
- Uncontrolled Fire Edge
- Completed Dozer Line
- Hand Line
- Power Transmission Line
- Contours 100-foot

MAP 4 - NN
MAP 5 - MM MAP 3 - TT
MAP 7 - EE North MAP 2 - WW
MAP 8 - EE South MAP 1 - YY

WEATHER
Temp: 70-75
RH: 27-32
Wind: Downslope (am)
Upslope (pm) 3-6
Haines: 4



S. Bushnell
08 25 15
2159 Hours

Datum: North American 1983 HARN