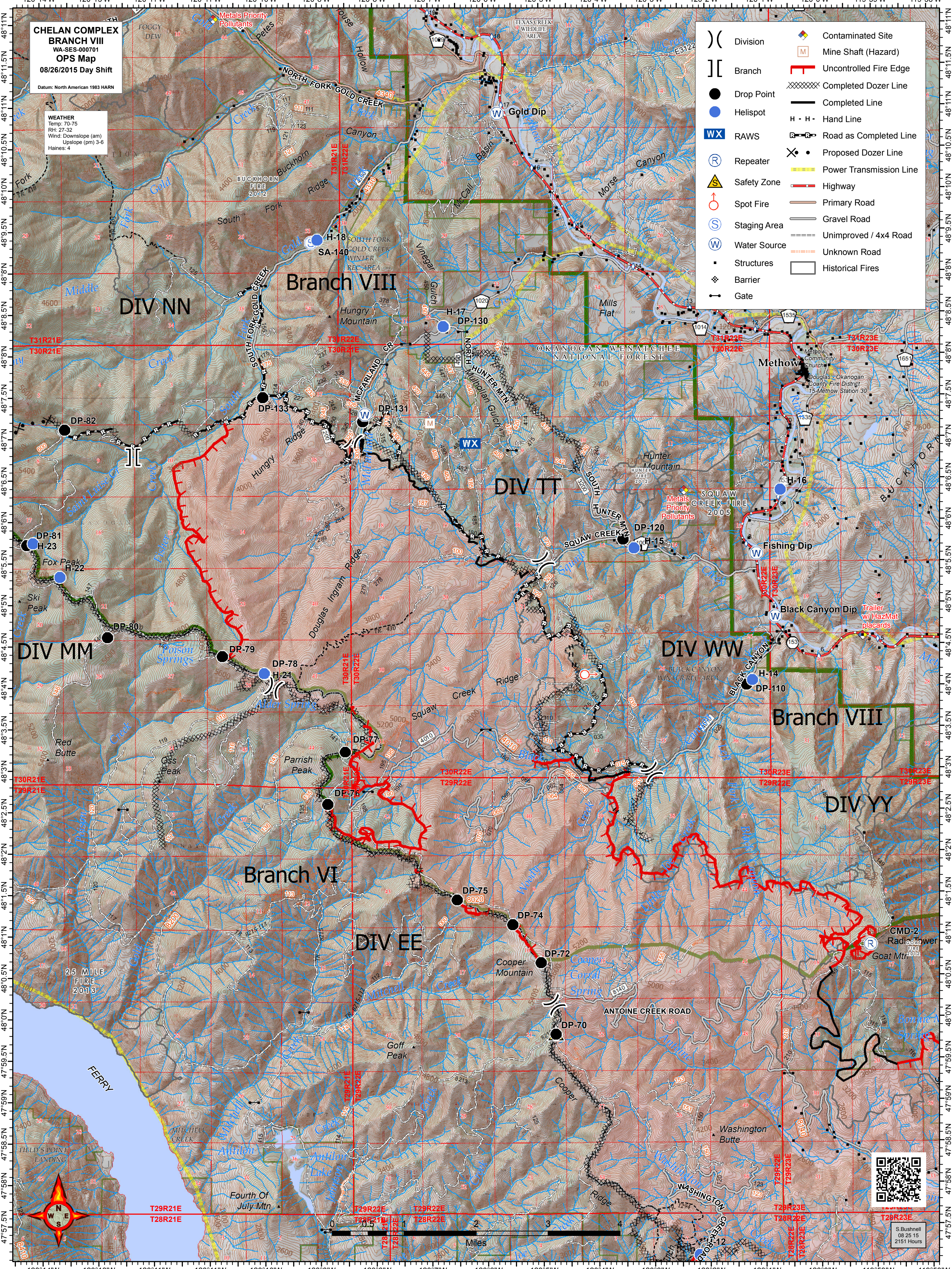


**CHELAN COMPLEX
BRANCH VIII
WA-SES-000701
OPS Map
08/26/2015 Day Shift**

Datum: North American 1983 HARN

WEATHER
Temp: 70-75
RH: 27-32
Wind: Downslope (am)
Upslope (pm) 3-6
Haines: 4

()	Division	◆	Contaminated Site
[]	Branch	M	Mine Shaft (Hazard)
●	Drop Point	┌	Uncontrolled Fire Edge
●	Helispot	XXXX	Completed Dozer Line
WX	RAWS	—	Completed Line
Ⓡ	Repeater	H - H	Hand Line
⚠	Safety Zone	Ⓡ	Road as Completed Line
Ⓢ	Spot Fire	Ⓧ	Proposed Dozer Line
Ⓢ	Staging Area	—	Power Transmission Line
Ⓢ	Water Source	—	Highway
■	Structures	—	Primary Road
⚡	Barrier	—	Gravel Road
—	Gate	---	Unimproved / 4x4 Road
		---	Unknown Road
		□	Historical Fires



S. Bushnell
08 25 15
2151 Hours