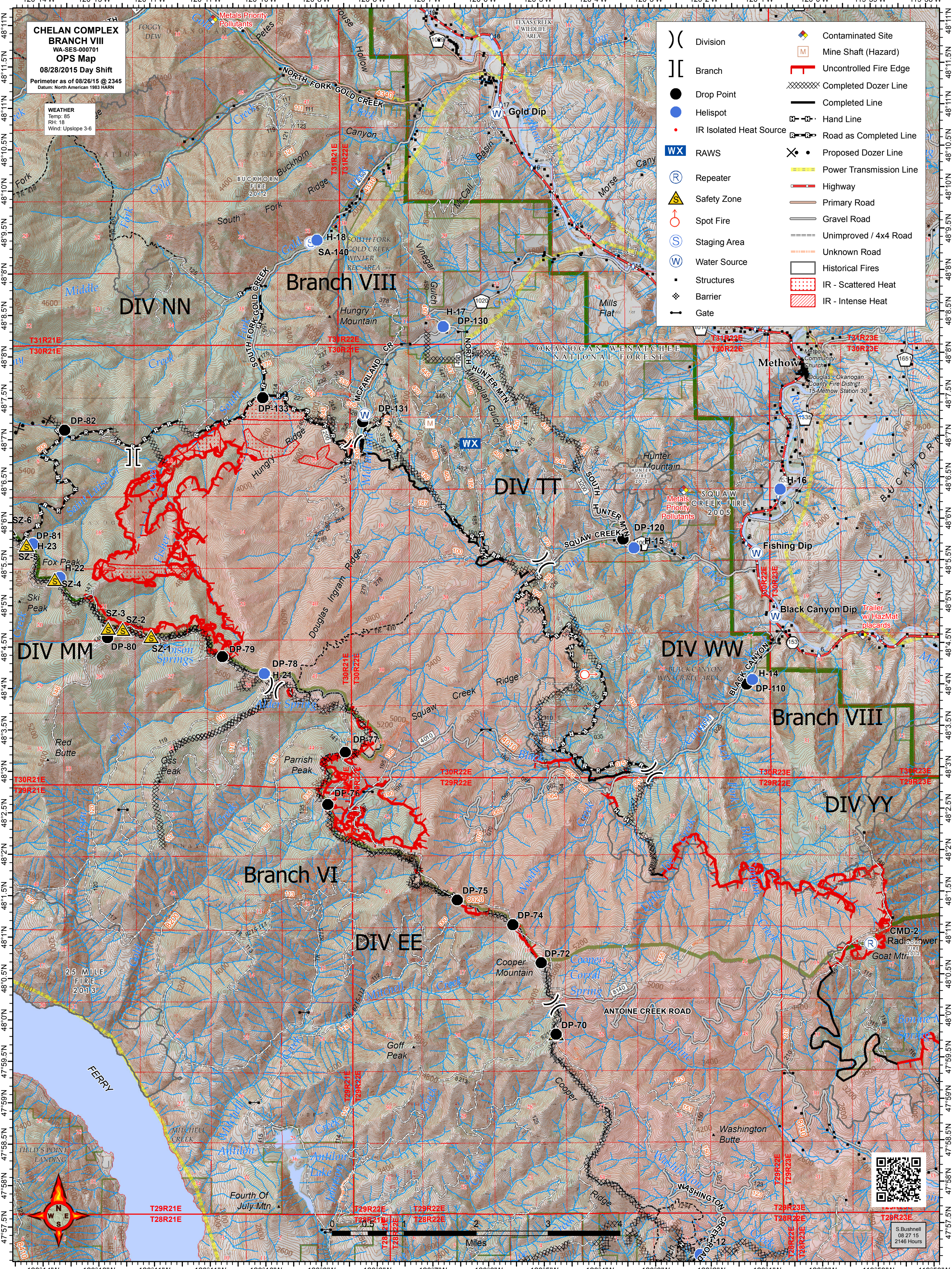


**CHELAN COMPLEX
BRANCH VIII
WA-SES-000701
OPS Map
08/28/2015 Day Shift**
Perimeter as of 08/26/15 @ 2345
Datum: North American 1983 HARN

WEATHER
Temp: 85
RH: 18
Wind: Upslope 3-6

()	Division	◆	Contaminated Site
[]	Branch	M	Mine Shaft (Hazard)
●	Drop Point	—	Uncontrolled Fire Edge
●	Helispot	XXXXXX	Completed Dozer Line
●	IR Isolated Heat Source	—	Completed Line
WX	RAWS	—	Hand Line
Ⓡ	Repeater	—	Road as Completed Line
⚠	Safety Zone	ⓧ	Proposed Dozer Line
Ⓢ	Spot Fire	—	Power Transmission Line
Ⓢ	Staging Area	—	Highway
Ⓢ	Water Source	—	Primary Road
■	Structures	—	Gravel Road
⊠	Barrier	—	Unimproved / 4x4 Road
—	Gate	—	Unknown Road
		—	Historical Fires
		▨	IR - Scattered Heat
		▨	IR - Intense Heat



S. Bushnell
08/27/15
2146 Hours