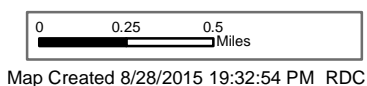


Chelan Fires Incident
 GIS Acres 163,026
 8/28/2015 1915
 Day Operational Period 8/29/2015



- North
- Fire Origin
- Water Source
- Spot Fire
- Safety Zone
- Completed Dozer Line
- Hand Line
- Proposed Dozer Line
- Helispot
- Drop Point
- Road as Completed Line
- Completed Line
- Uncontrolled Fire Edge

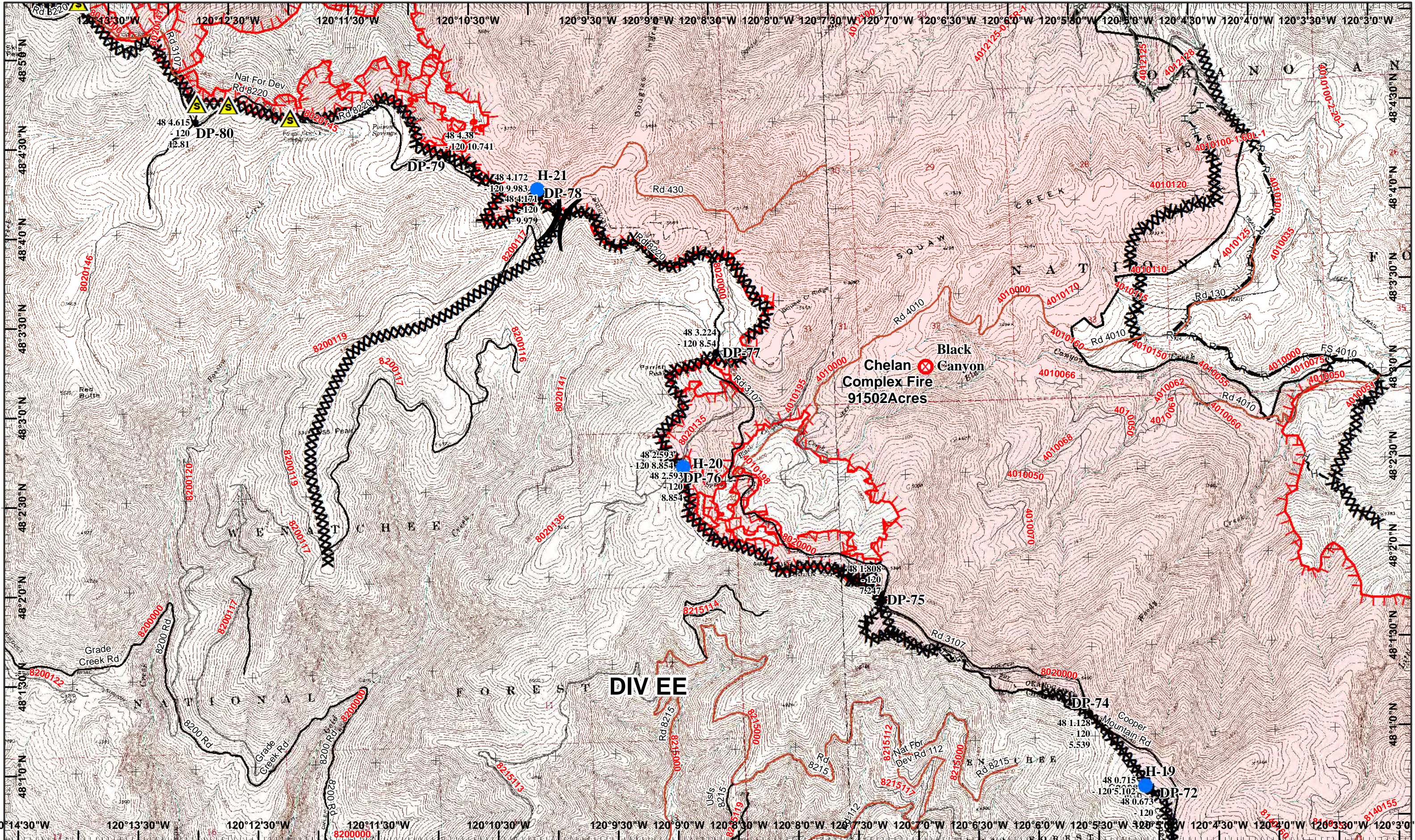
Neighboring Pages

West Page	North Page	East Page
	Douth Page 2	

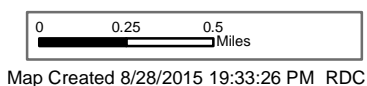
2	3	4
5	6	
7	8	
9	10	

Page 1
)(Division
 || Branch





Chelan Fires Incident
 GIS Acres 163,026
 8/28/2015 1915
 Day Operational Period 8/29/2015



- ⊗ Fire Origin
- Helispot
- Drop Point
- XXXX Completed Dozer Line
- H—H Hand Line
- R—R Road as Completed Line
- Completed Line
- Uncontrolled Fire Edge
- ▲ Safety Zone

Neighboring Pages

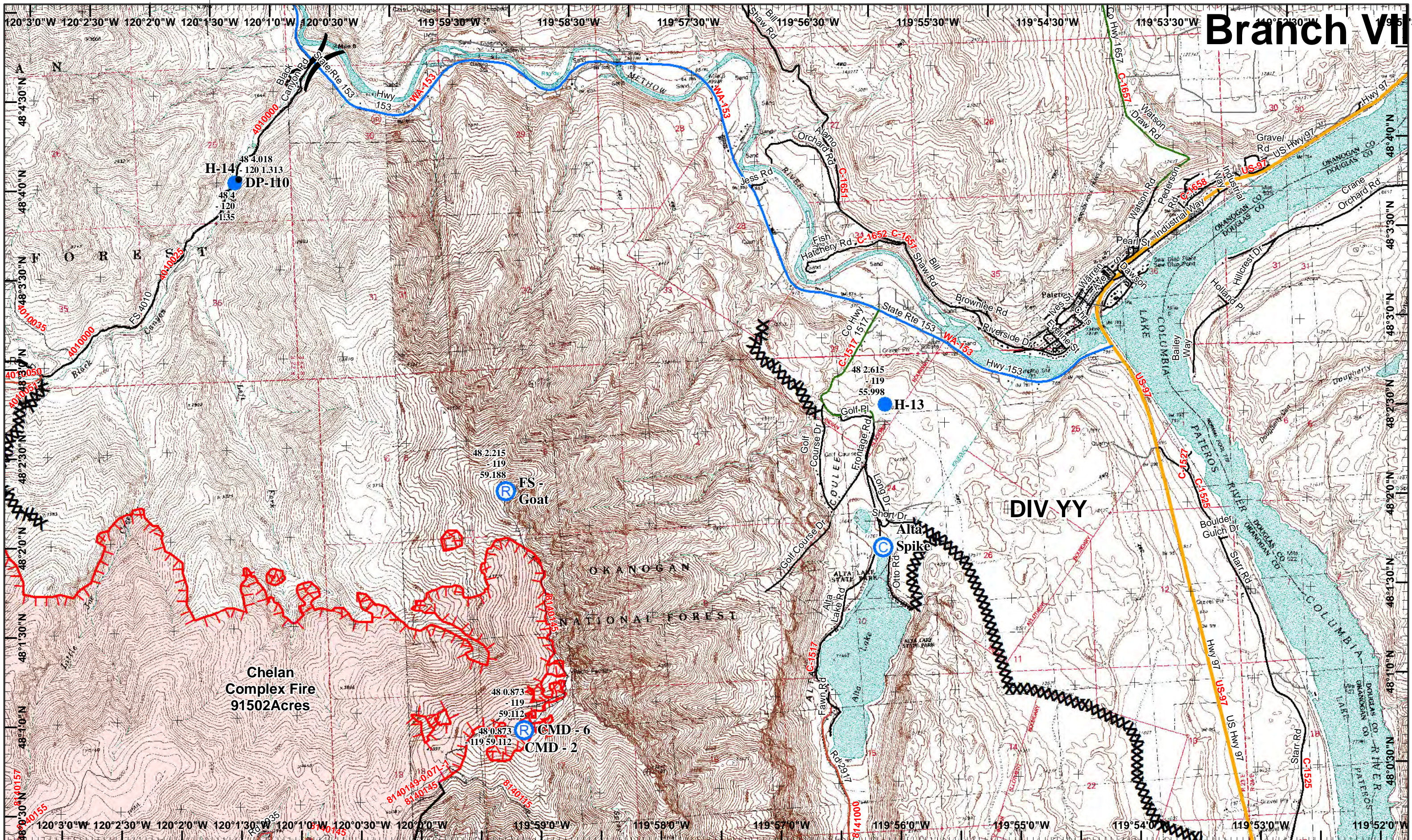
West Page	North Page 1 Douth Page	East Page 3
-----------	----------------------------	-------------

1	2	3	4
5	6	7	8
9	10		

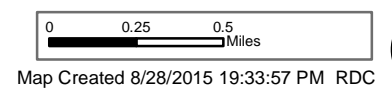
Page 2
)(Division
)(Branch



Branch VII



Chelan Fires Incident
 GIS Acres 163,026
 8/28/2015 1915
 Day Operational Period 8/29/2015



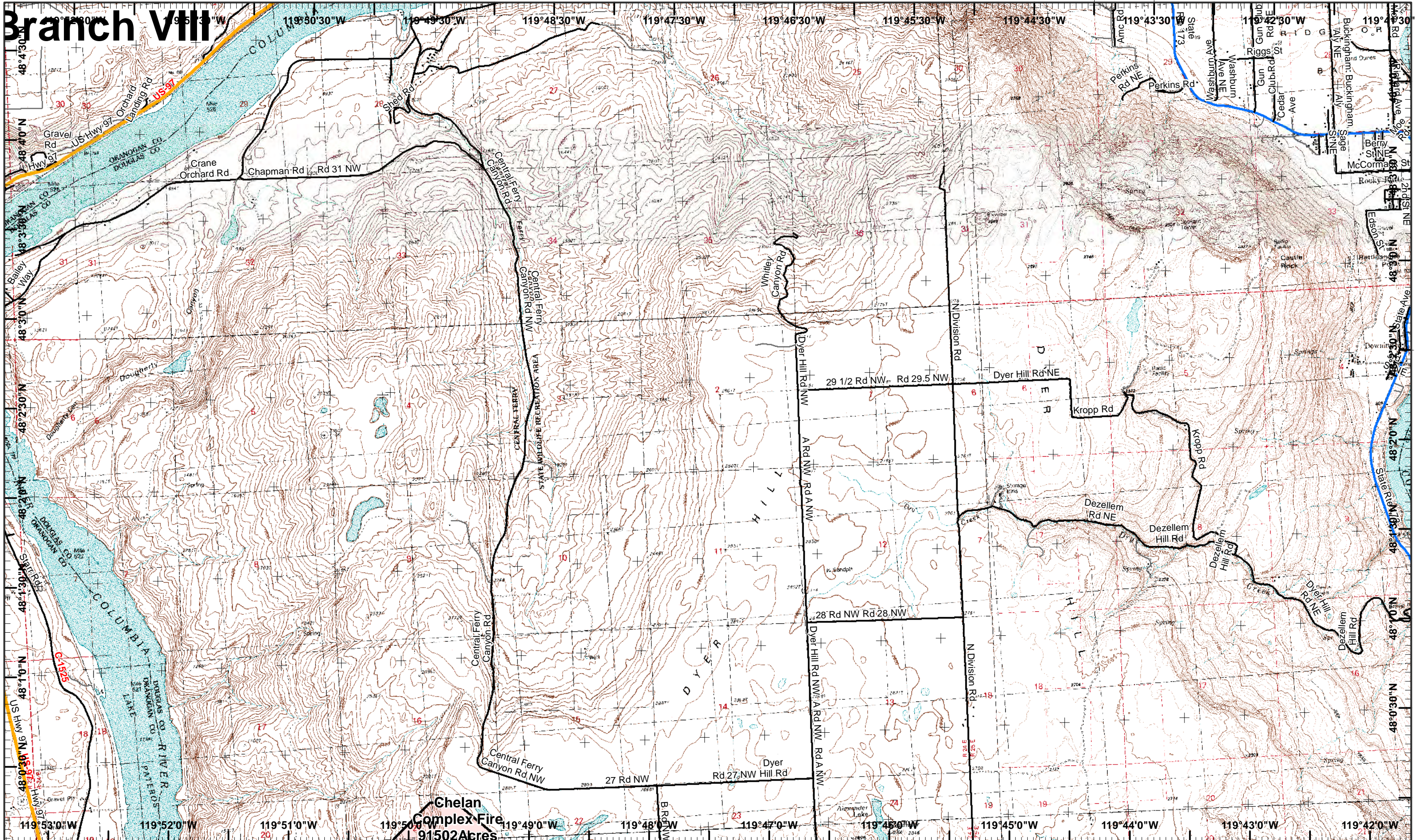
- North
- Helispot
- Drop Point
- Completed Dozer Line
- Completed Line
- Repeater
- Camp
- Road as Completed Line
- Uncontrolled Fire Edge

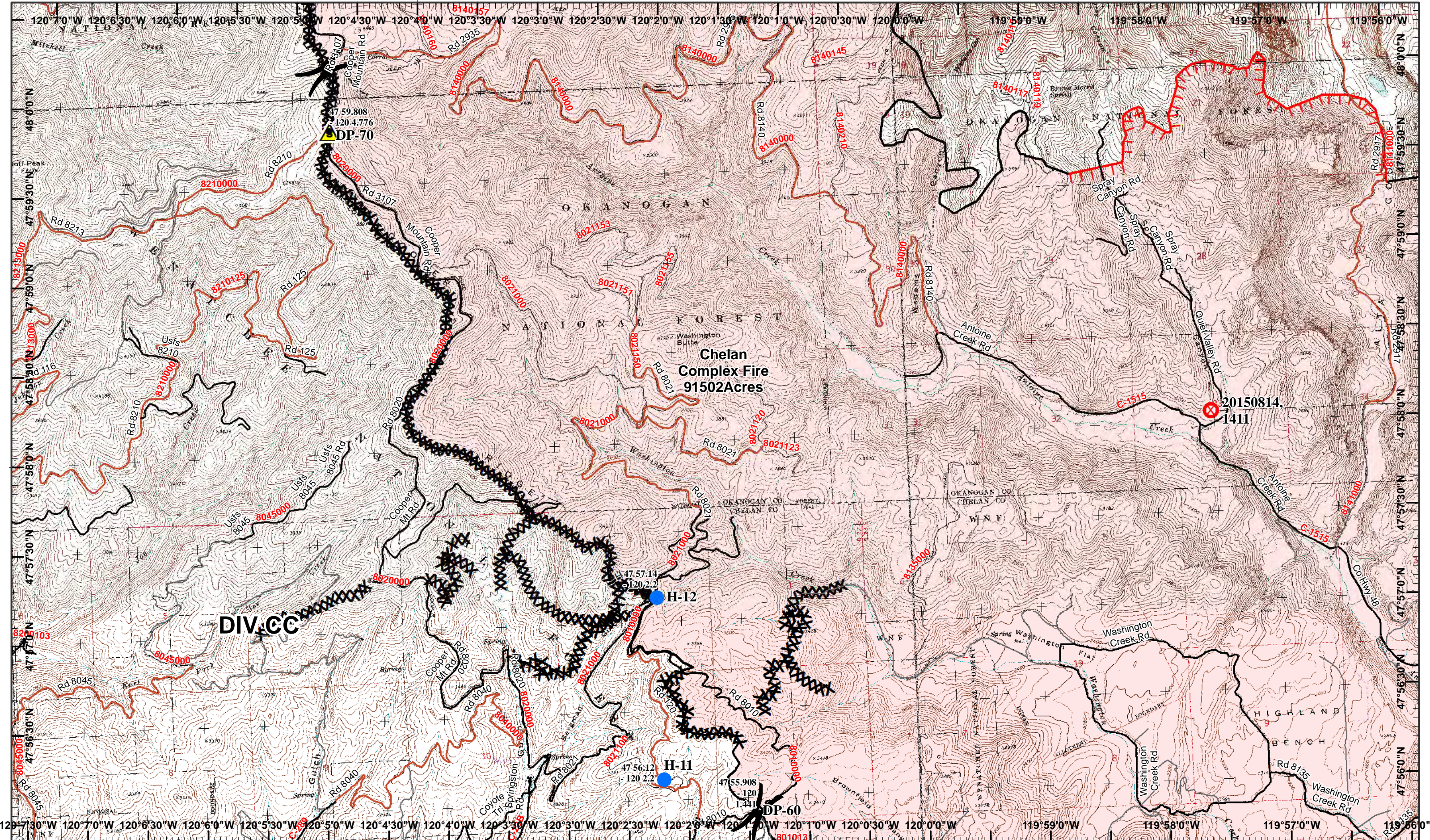
Neighboring Pages
 West Page 2 North Page 5
 Douth Page 5 East Page 4

2	3	4
5	6	
7	8	
9	10	

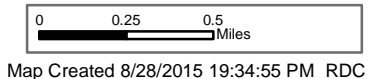
Page 3
)(Division
 || Branch







Chelan Fires Incident
 GIS Acres 163,026
 8/28/2015 1915
 Day Operational Period 8/29/2015



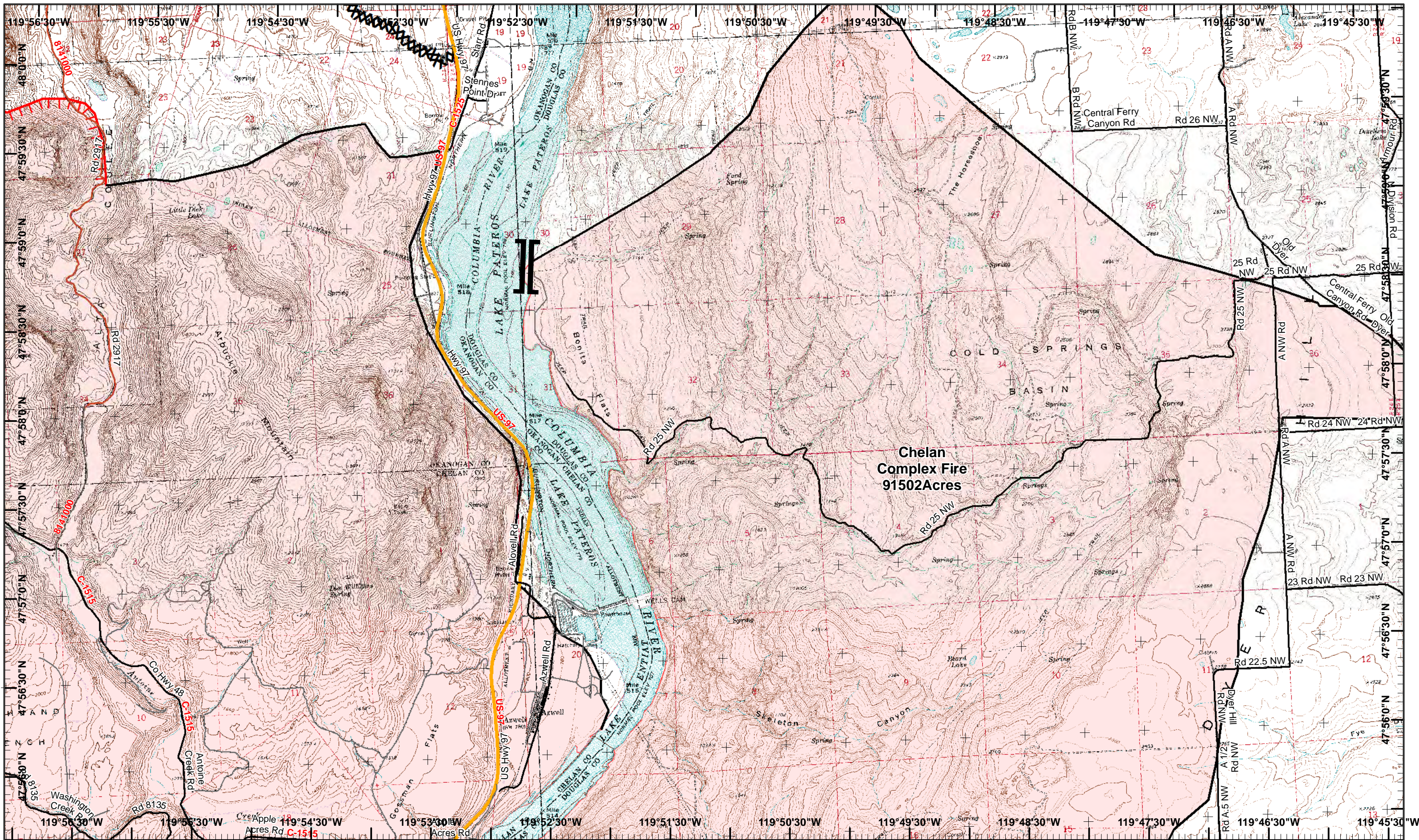
- North
- Fire Origin
- Helispot
- Safety Zone
- Drop Point
- Completed Dozer Line
- H-Hand Line
- Completed Line
- Uncontrolled Fire Edge

Neighboring Pages
 West Page North Page 3 East Page 6
 Douth Page 7

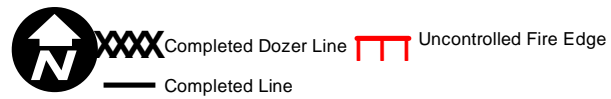
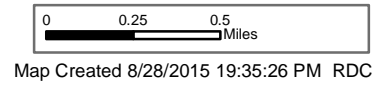
1	2	3	4
5	6		
7	8		
9	10		

Page 5
)(Division
 || Branch





Chelan Fires Incident
 GIS Acres 163,026
 8/28/2015 1915
 Day Operational Period 8/29/2015

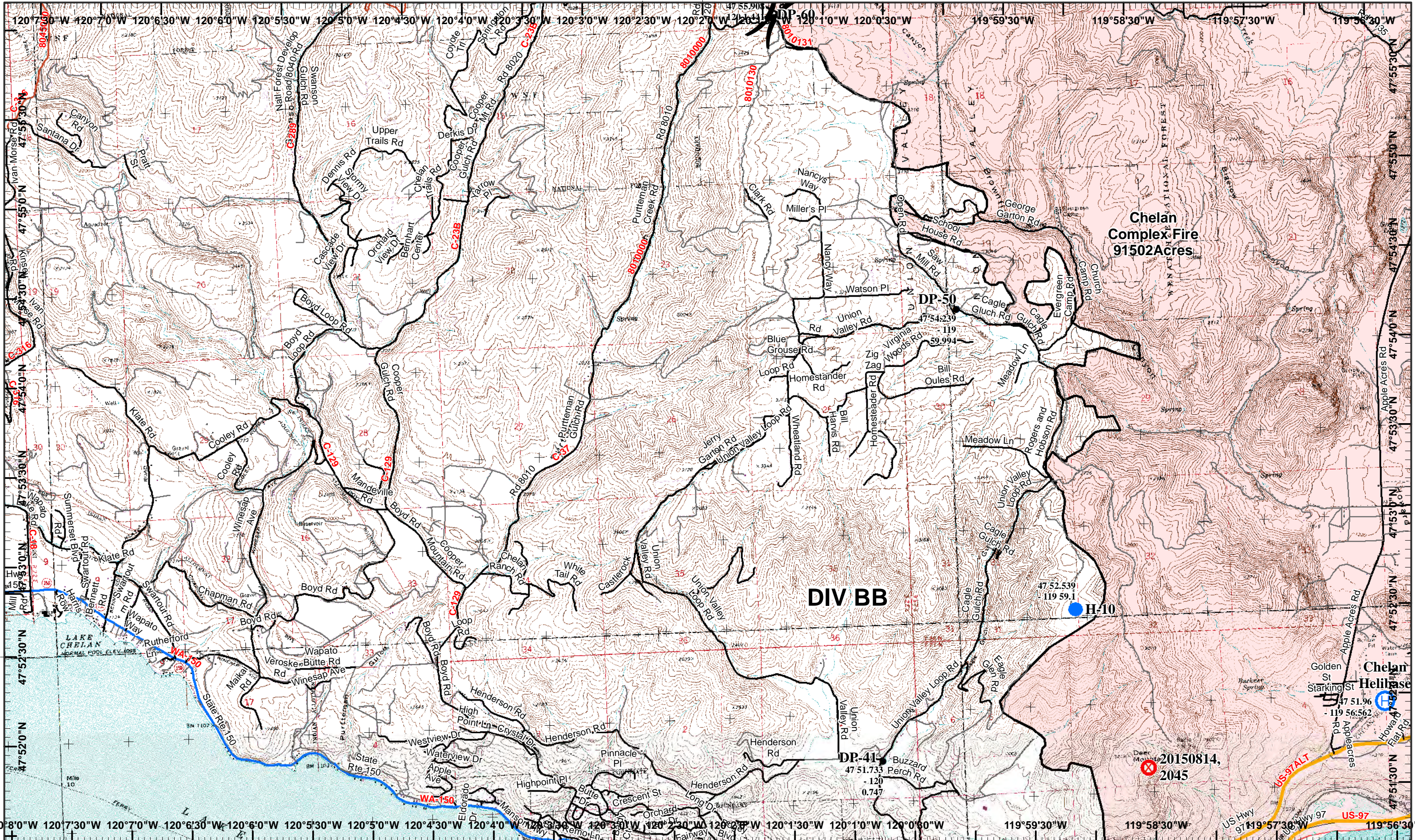


Neighboring Pages
 West Page 5 North Page 4 East Page
 Douth Page 8

1	2	3	4
5	6	7	8
9	10		

Page 6
 Division
 Branch





**Chelan
Complex Fire
91502Acres**

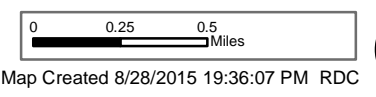
DIV BB





H-10

DP-41
47 51.733
- 120
0.747

**20150814,
2045**

Chelan Fires Incident
GIS Acres 163,026
8/28/2015 1915
Day Operational Period 8/29/2015



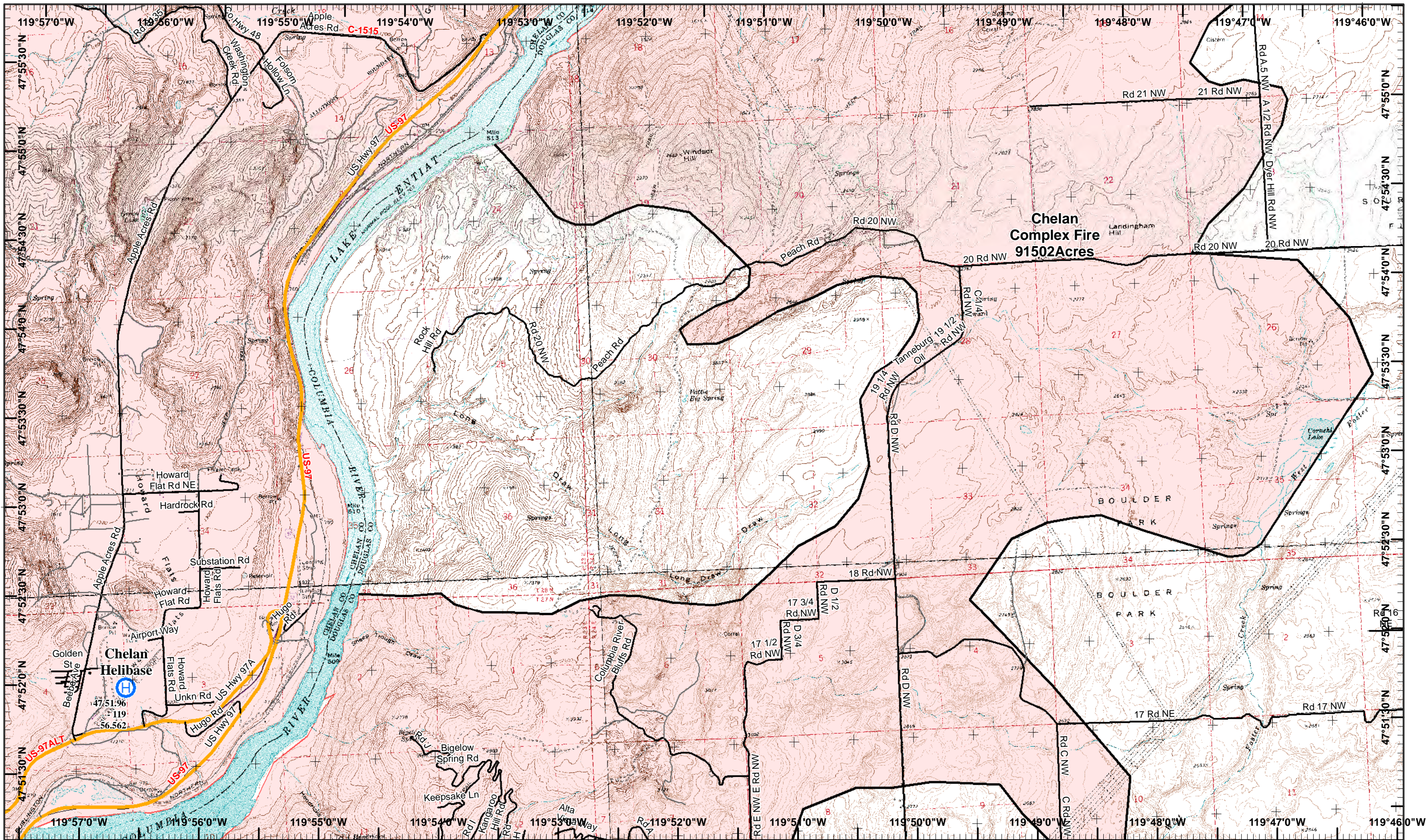
-  Fire Origin
-  Helibase
-  Helispot
-  Drop Point
-  Completed Line

Neighboring Pages
West Page North Page 5 East Page 8
Douth Page 9

1	2	3	4
5	6		
7	8		
9	10		

Page 7
() Division
[] Branch



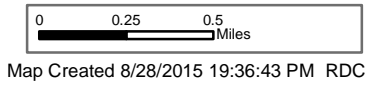


**Chelan
Complex Fire
91502Acres**

**Chelan
Helibase**

**BOULDER
PARK**

Chelan Fires Incident
GIS Acres 163,026
8/28/2015 1915
Day Operational Period 8/29/2015

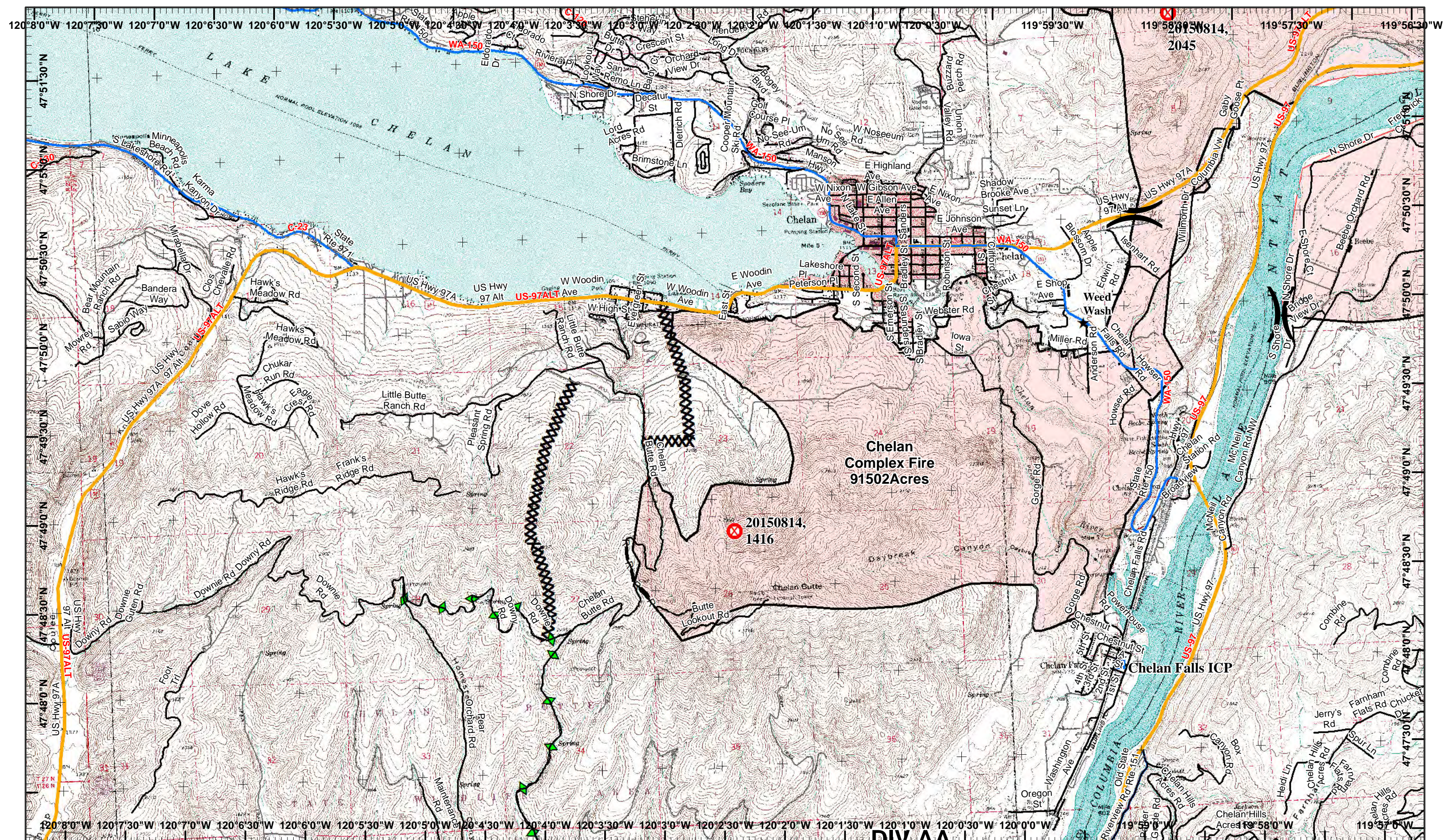


Neighboring Pages
West Page 7 North Page 6 East Page
Douth Page 10

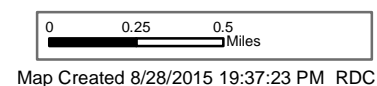
1	2	3	4
5	6	7	8
9	10		

Page 8
X Division
I Branch





Chelan Fires Incident
 GIS Acres 163,026
 8/28/2015 1915
 Day Operational Period 8/29/2015



- X Fire Origin
- Incident Command Post

- Drop Point
- ★ Other
- XXXX Completed Dozer Line
- Completed Line
- R—R Road as Completed Line
- ◆ Plow Line

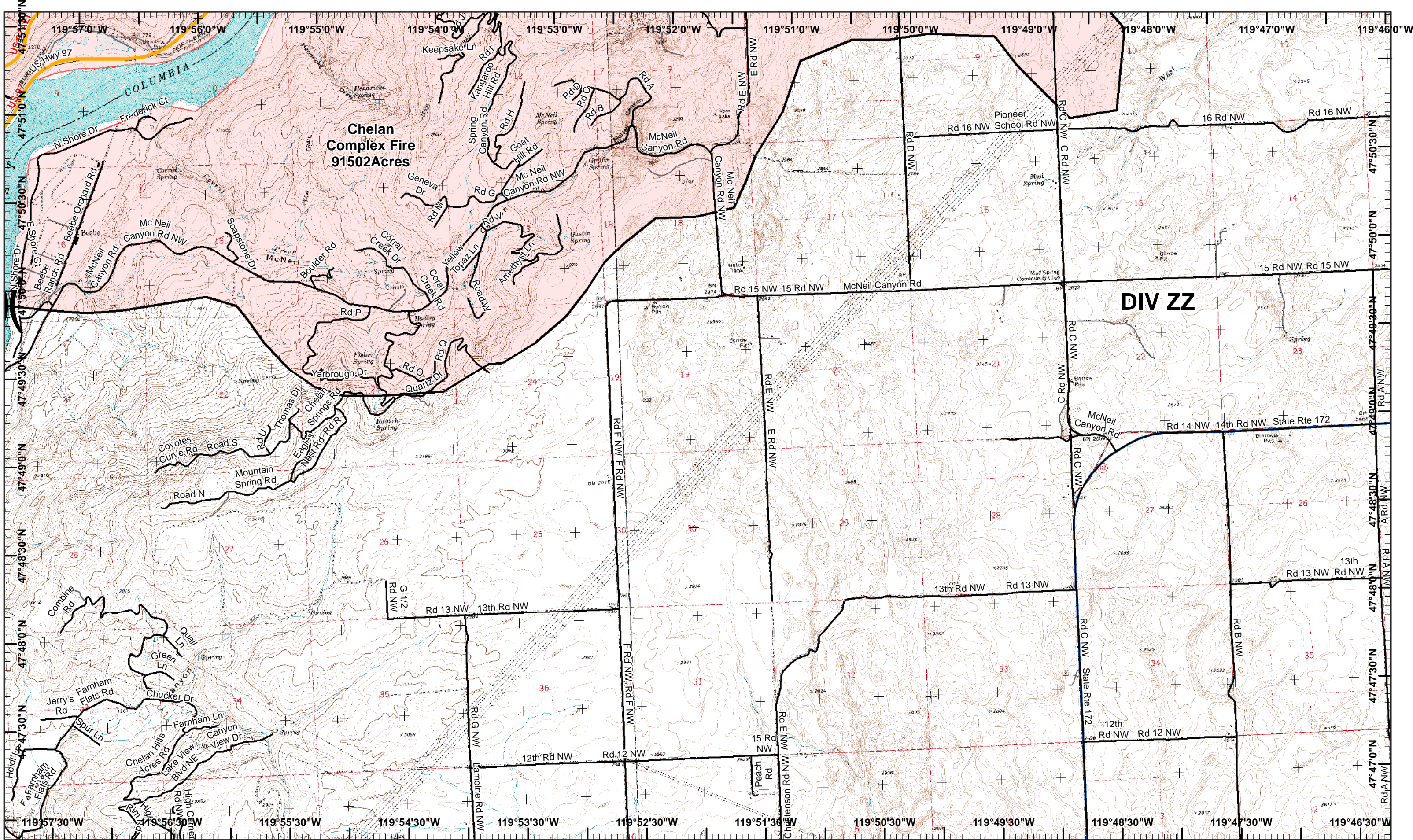
Neighboring Pages

West Page	North Page 7	East Page 10
	Douth Page	

2	3	4
5	6	
7	8	
9	10	

Page 9
)(Division
 || Branch





**Chelan
Complex Fire
91502Acres**

DIV ZZ

Chelan Fires Incident
Day Operational Period 8/29/2015

GIS Acres 163,026
8/28/2015 1915
Map Created 8/28/2015 19:37:58 PM RDC



Completed Line

Neighboring Pages
West Page 9 North Page 8 East Page
Douth Page

1	2	3	4
5	6		
7	8		
9	10		

Page 10
X Division
I Branch

