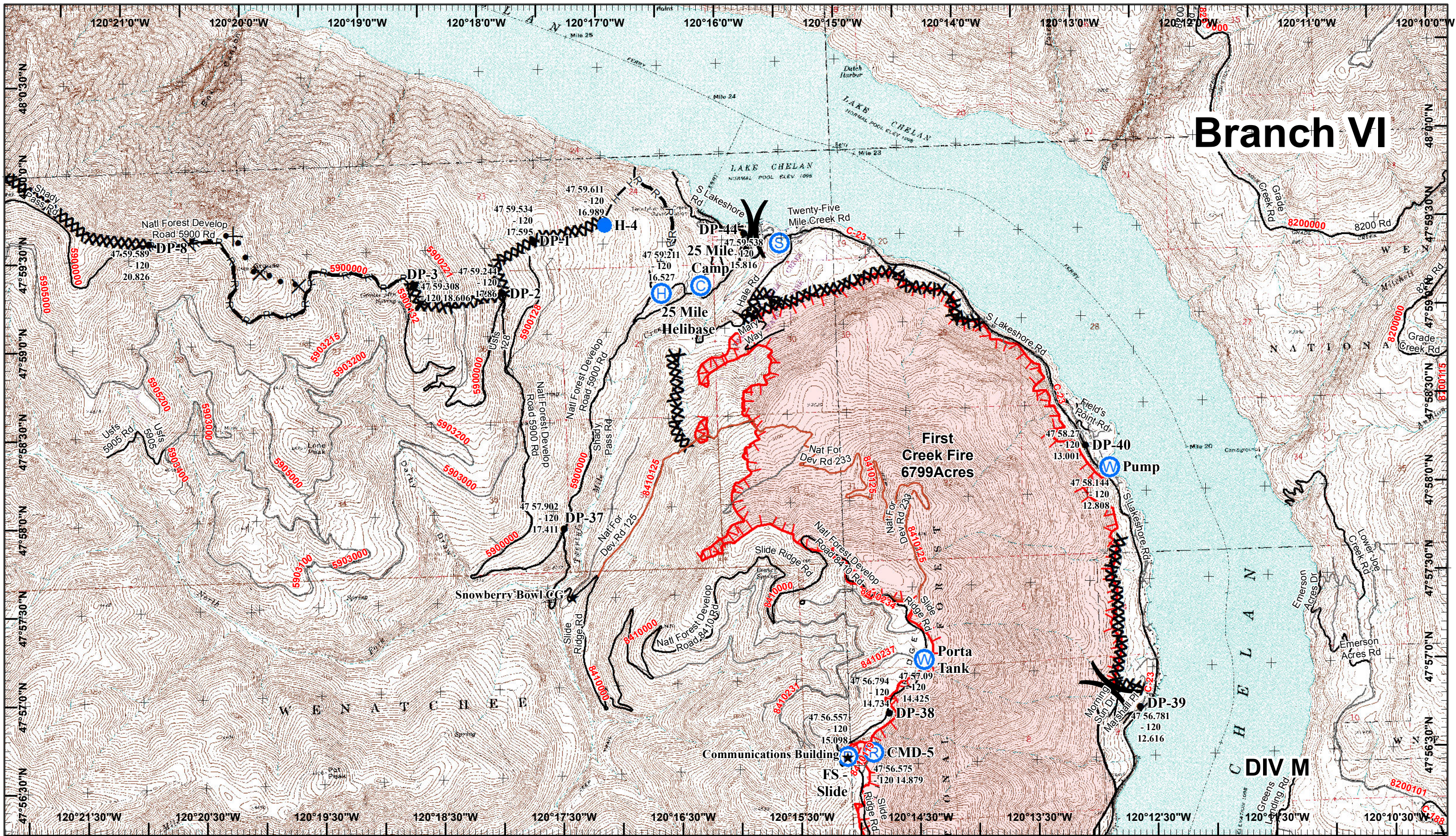
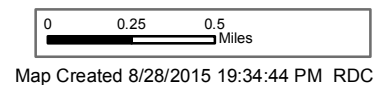


# Branch VI



## First Creek IAP

GIS Acres 163,026  
8/28/2015 1915



- H Helibase
- W Water Source
- C Camp
- R Repeater
- S Staging Area
- Drop Point
- ★ Other

- Completed Dozer Line
- Proposed Dozer Line
- Hand Line
- Completed Line
- Road as Completed Line
- Uncontrolled Fire Edge
- Fire Perimeter

Day Operational Period 8/29/2015

( ) Division  
[ ] Branch

Neighboring Pages

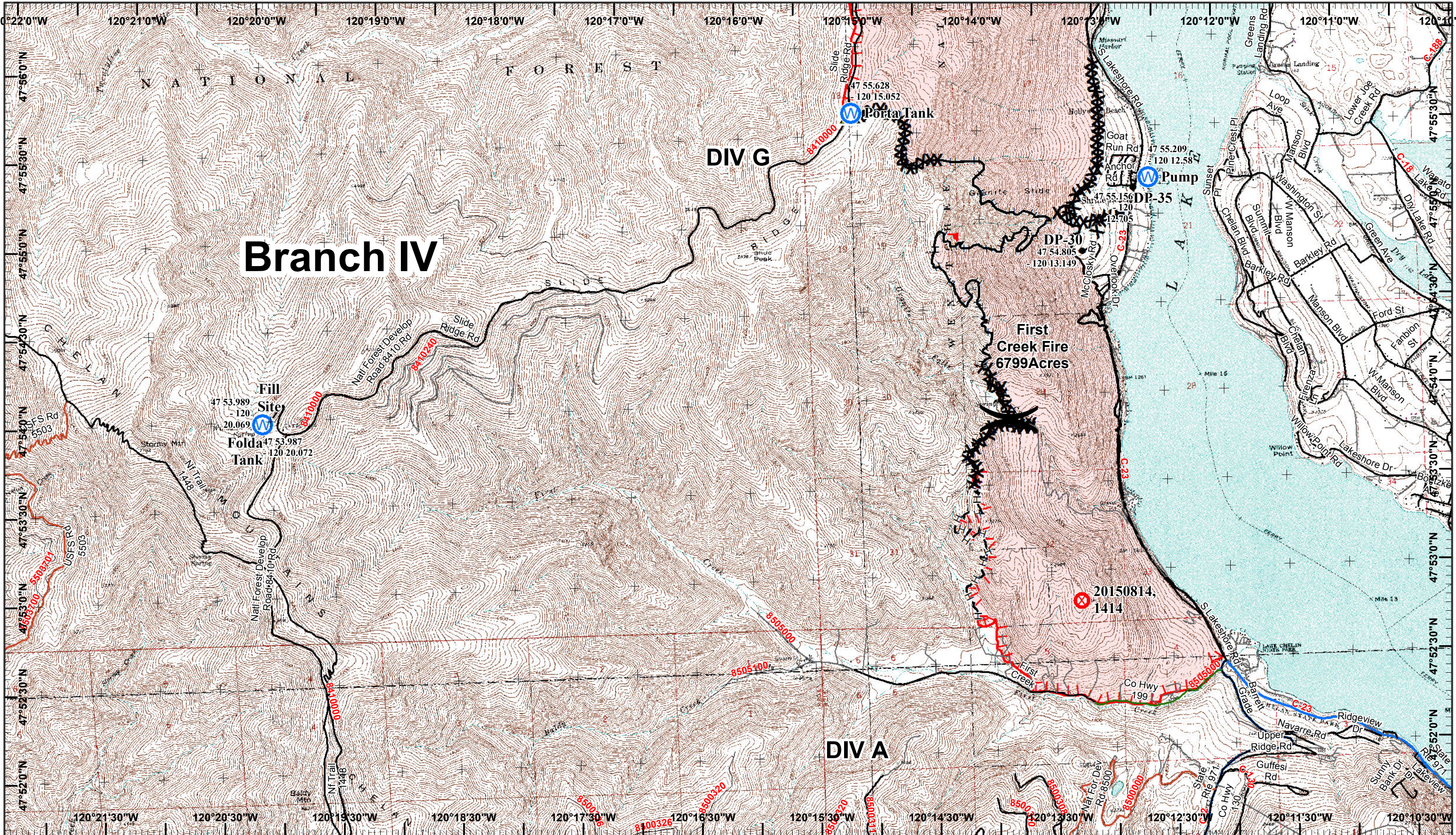
West Page	North Page Douth Page 22	East Page
-----------	-----------------------------	-----------

21
22

Page 21

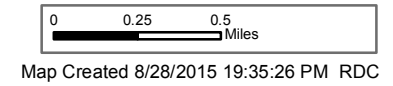






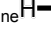
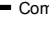


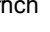

# Branch IV



## First Creek IAP

GIS Acres 163,026  
8/28/2015 1915



-  Fire Origin
-  Water Source
-  Safety Zone
-  Completed Dozer Line
-  Hand Line
-  Completed Line
-  Uncontrolled Fire Edge
-  Fire Perimeter
-  Division Branch
-  Drop Point

Neighboring Pages

West Page	North Page 21	East Page
	Douth Page	

21
22

Day Operational Period 8/29/2015