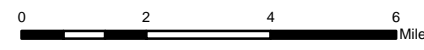


Chelan Complex

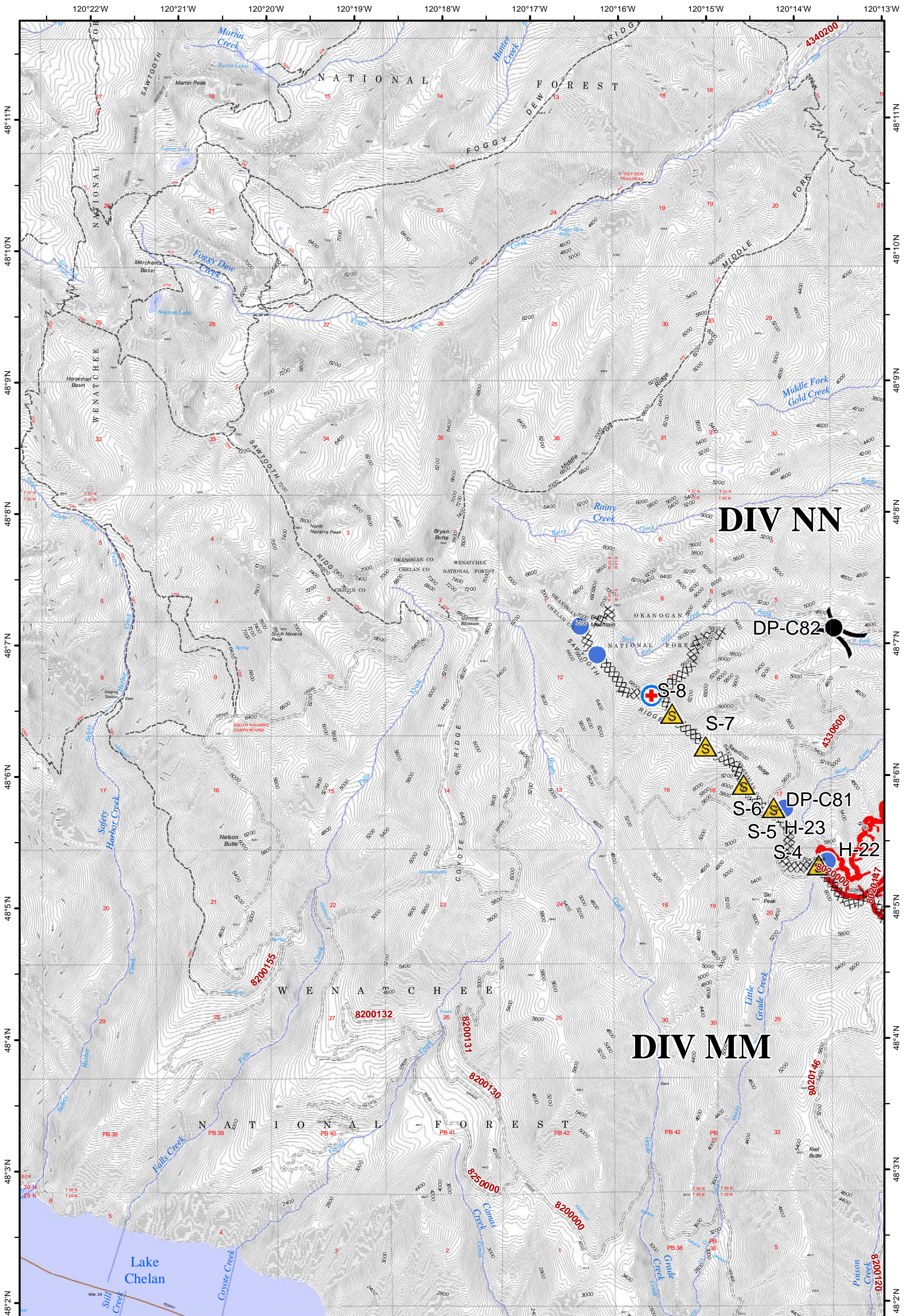
WA-SES-000701
IAP MAP
9/6/2015 DAY



- | | | | |
|-------------|---------------------|--------------|------------------------------|
| Camp | MediVac Site | Sling Site | Uncontrolled Fire Edge |
| Drop Point | Mobile Weather Unit | Spot Fire | Completed Dozer Line |
| Fire Origin | Pump | Staging Area | Completed Line |
| Helibase | Repeater | Water Source | H - H Hand Line |
| Helispot | Safety Zone | Division | R - R Road as Completed Line |



Map Projection & Datum:
1983 Horn State Plane
Wash South FIPS 4602 Ft



Chelan Complex



WA-SES-000701
IAP MAP
9/6/2015 DAY



0 0.5 1 2 Miles

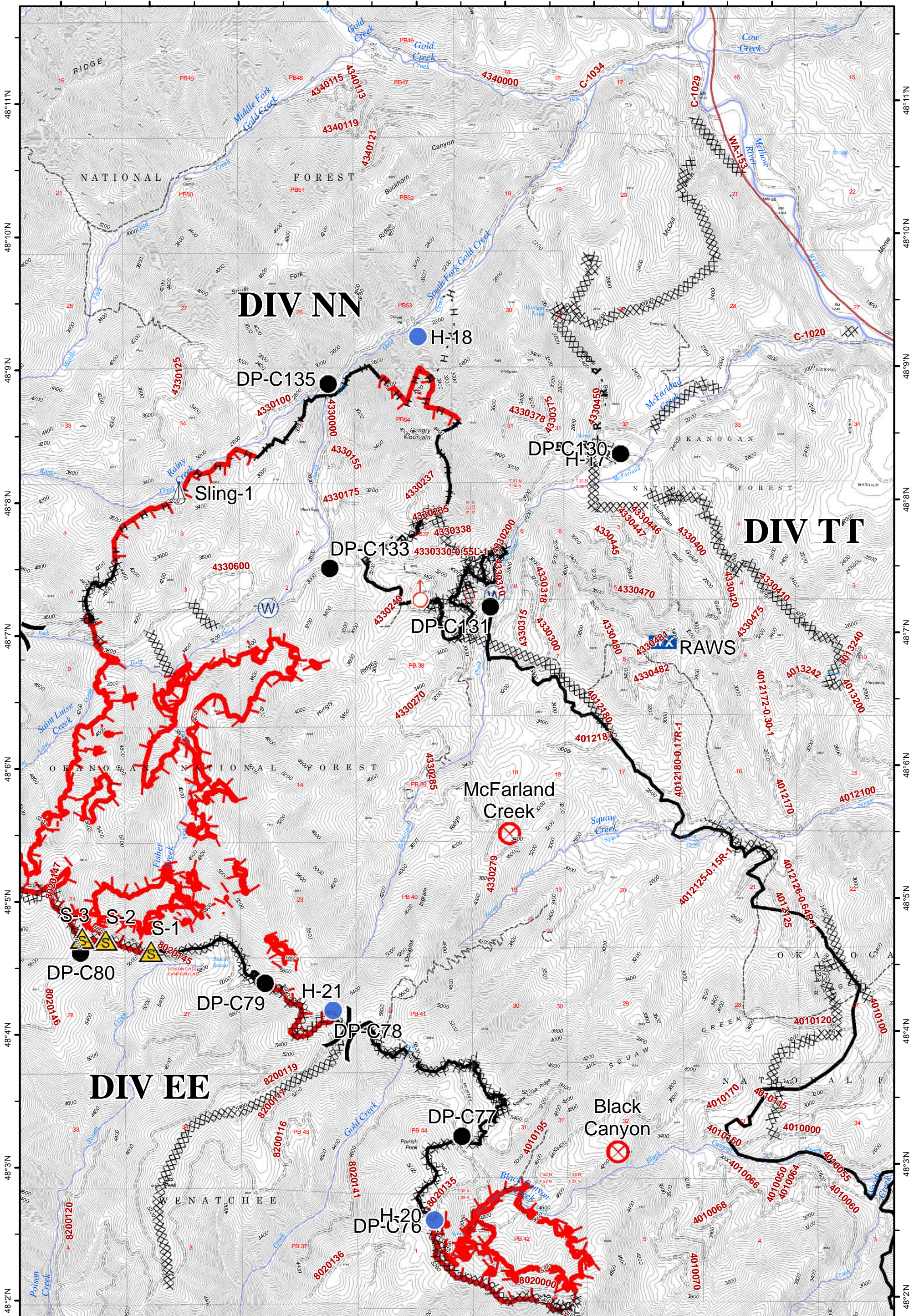
- Drop Point
- Staging Area
- Safety Zone
- Completed Dozer Line
- Camp
- Water Source
- Pump
- Uncontrolled Fire Edge
- Spot Fire
- Fire Origin
- Helispot
- Repeater
- Helibase
- Repeater
- Division
- Completed Line
- R - R Road as Completed Line

Page: H2



Map Projection & Datum: 1983 Harn
State Plane Wash South FIPS 4602 Ft

120°13'W 120°12'W 120°11'W 120°10'W 120°9'W 120°8'W 120°7'W 120°6'W 120°5'W 120°4'W



Chelan Complex



WA-SES-000701
IAP MAP
9/6/2015 DAY



0 0.5 1 2 Miles

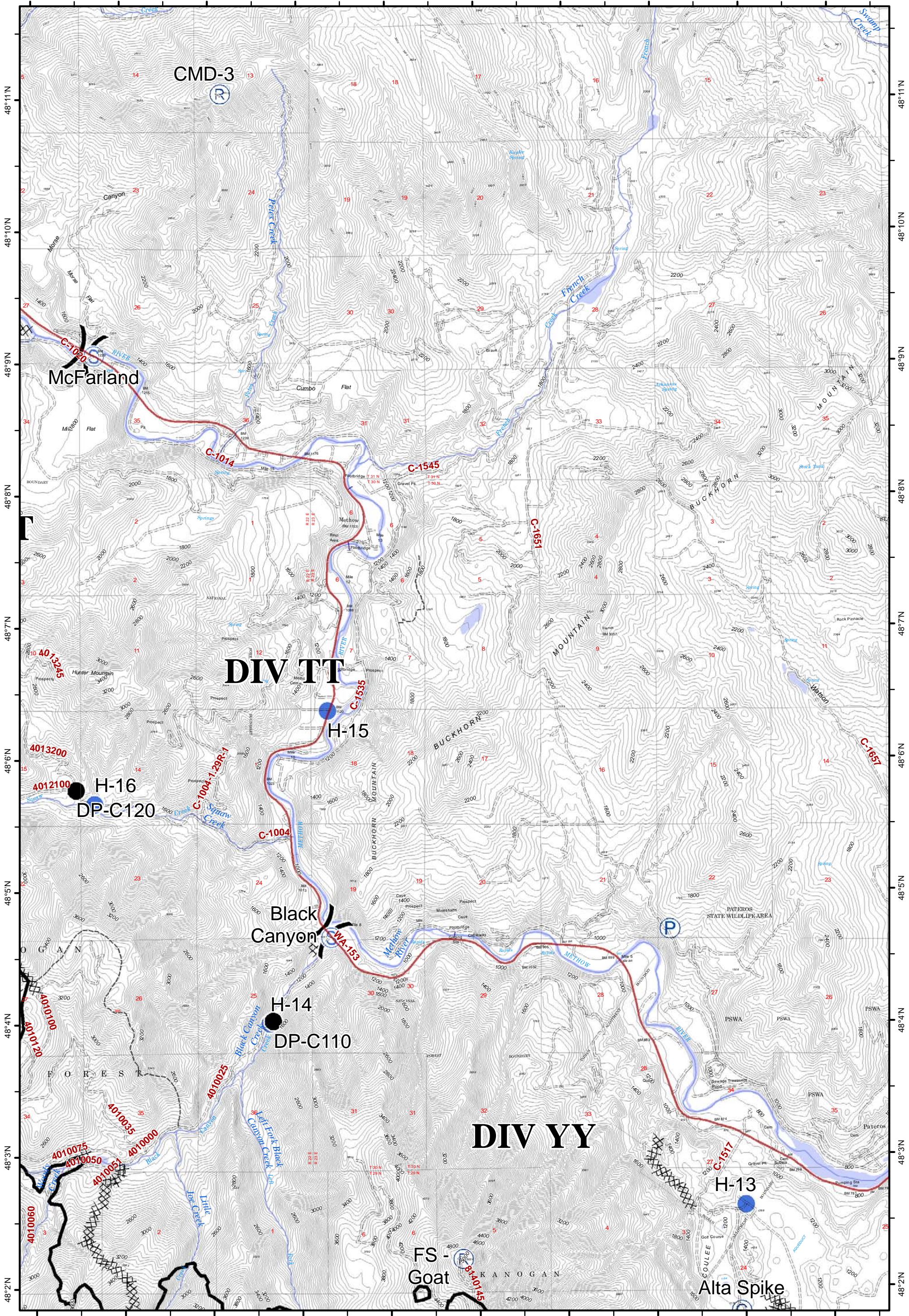
- Drop Point
- Camp
- Spot Fire
- Helibase
- Staging Area
- Water Source
- Fire Origin
- Repeater
- Safety Zone
- Pump
- Helispot
- Division
- Completed Dozer Line
- Uncontrolled Fire Edge
- Completed Line
- Road as Completed Line

Page: H3



Map Projection & Datum: 1983 Harn State Plane Wash South FIPS 4602 Ft

120°4'W 120°3'W 120°2'W 120°1'W 120°0'W 119°59'W 119°58'W 119°57'W 119°56'W 119°55'W



DIV TT

DIV YY

Chelan Complex



WA-SES-000701
IAP MAP
9/6/2015 DAY



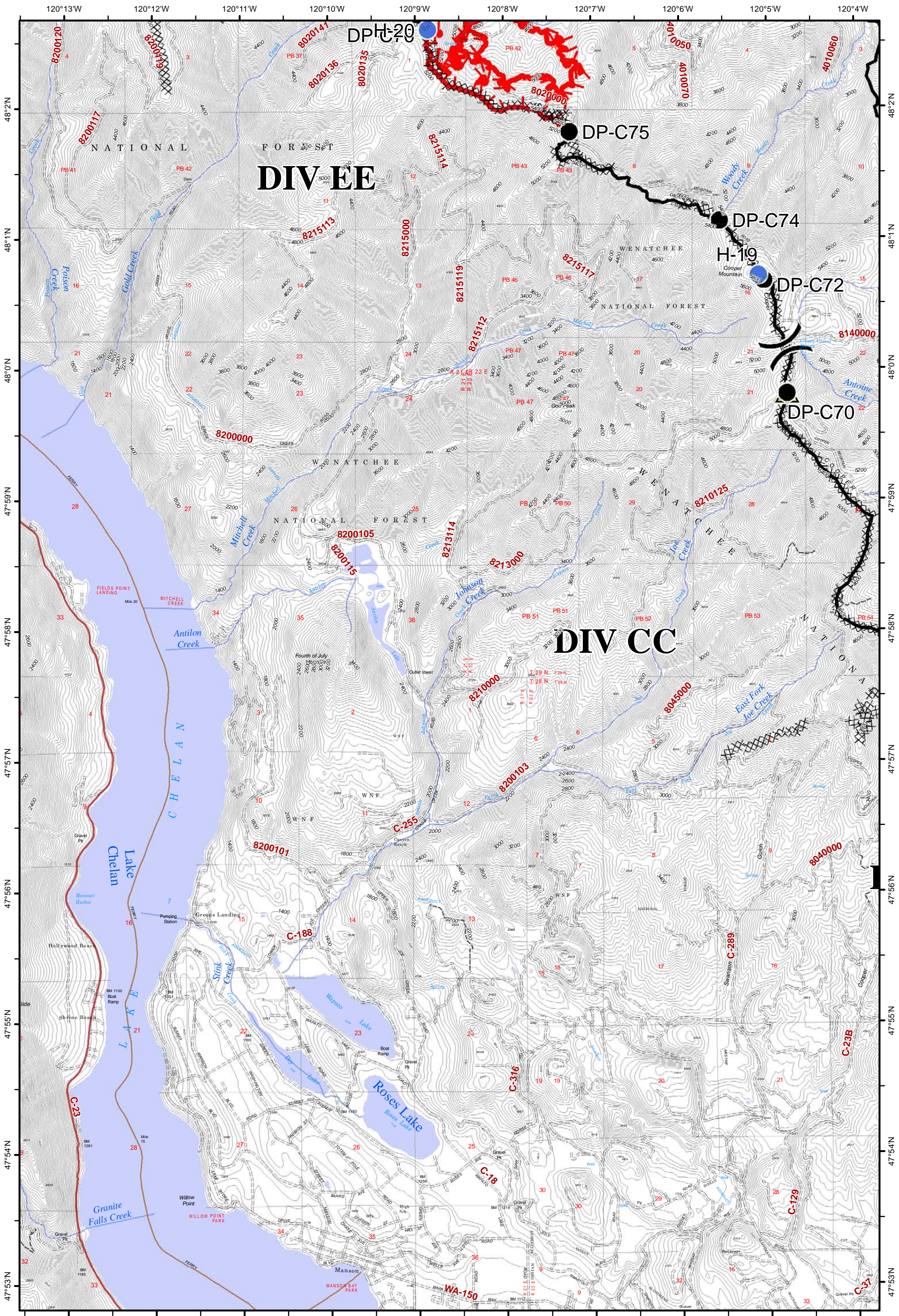
0 0.5 1 2 Miles

- Drop Point
- Camp
- Spot Fire
- Helibase
- Staging Area
- Water Source
- Fire Origin
- Repeater
- ▲ Safety Zone
- Pump
- Helispot
- Division
- XXXXX Completed Dozer Line
- Uncontrolled Fire Edge
- H - H Hand Line
- Completed Line
- R - R Road as Completed Line

Page: H4



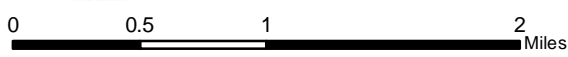
Map Projection & Datum: 1983 Harn State Plane Wash South FIPS 4602 Ft



Chelan Complex



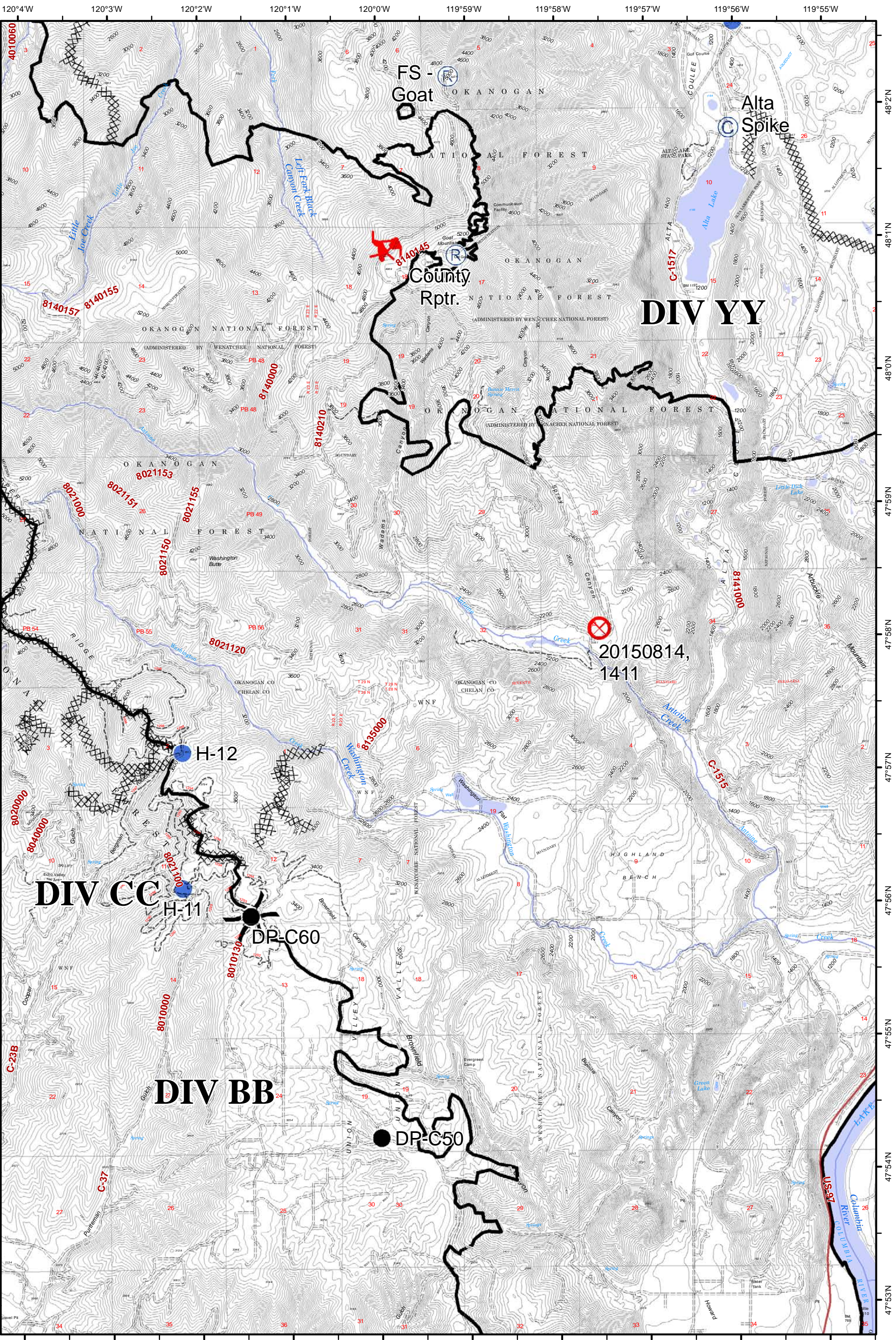
WA-SES-000701
IAP MAP
9/6/2015 DAY



- Drop Point
- Camp
- Spot Fire
- Helibase
- Staging Area
- Water Source
- Fire Origin
- Repeater
- Safety Zone
- Pump
- Helispot
- Division
- Uncontrolled Fire Edge
- Completed Line
- Road as Completed Line
- Completed Dozer Line
- H - H Hand Line



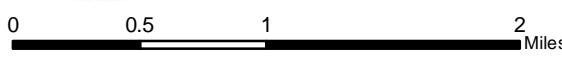
Map Projection & Datum: 1983 Harn
State Plane Wash South FIPS 4602 Ft



Chelan Complex



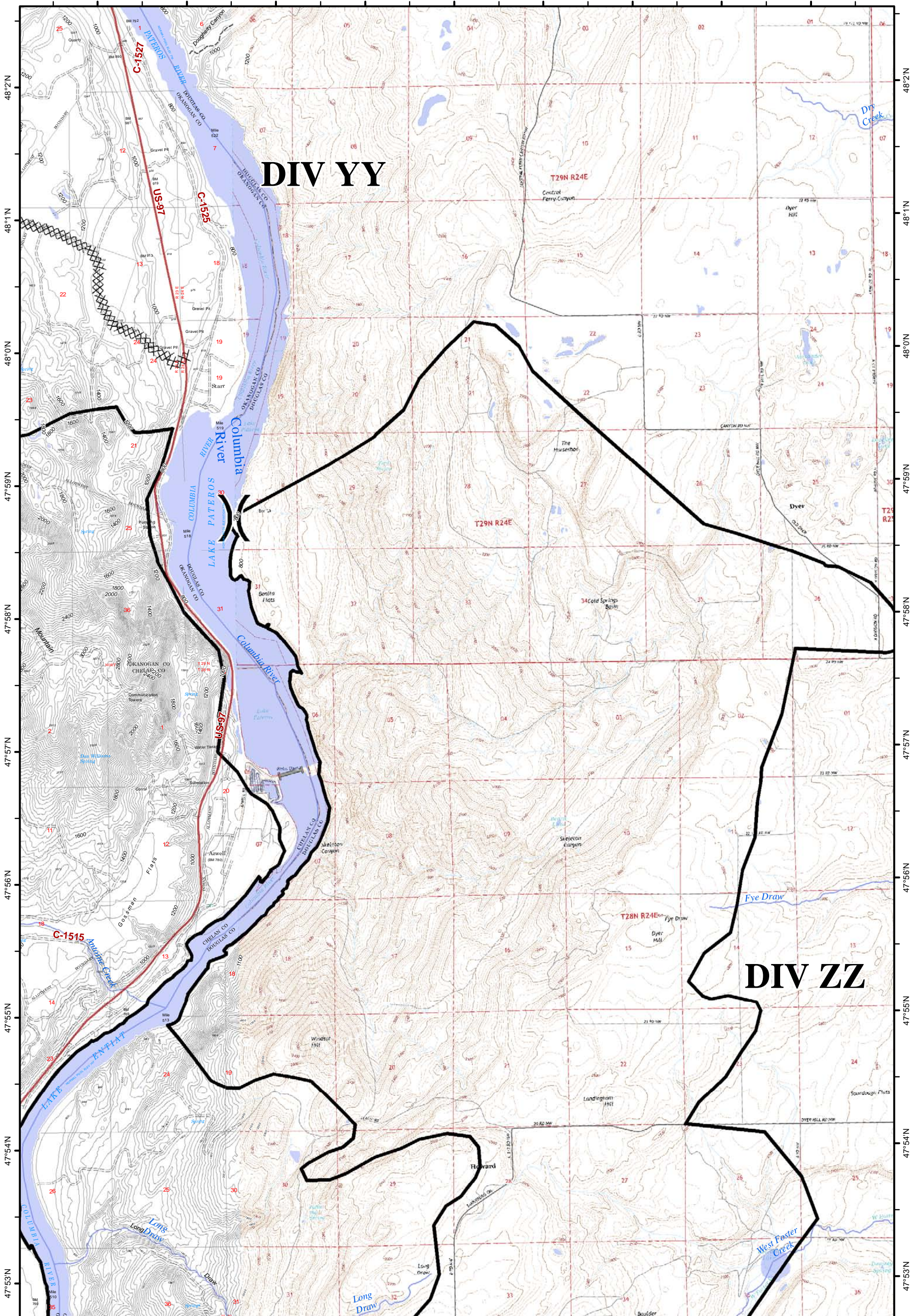
WA-SES-000701
IAP MAP
9/6/2015 DAY



- Drop Point
- Camp
- Spot Fire
- Helibase
- Staging Area
- Water Source
- Fire Origin
- Repeater
- ▲ Safety Zone
- Pump
- Helispot
- Division
- XXXXX Completed Dozer Line
- Uncontrolled Fire Edge
- H - H Hand Line
- Completed Line
- R - R Road as Completed Line



Map Projection & Datum: 1983 Harn
State Plane Wash South FIPS 4602 Ft



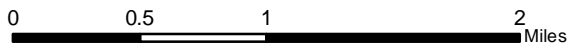
DIV YY

DIV ZZ

Chelan Complex

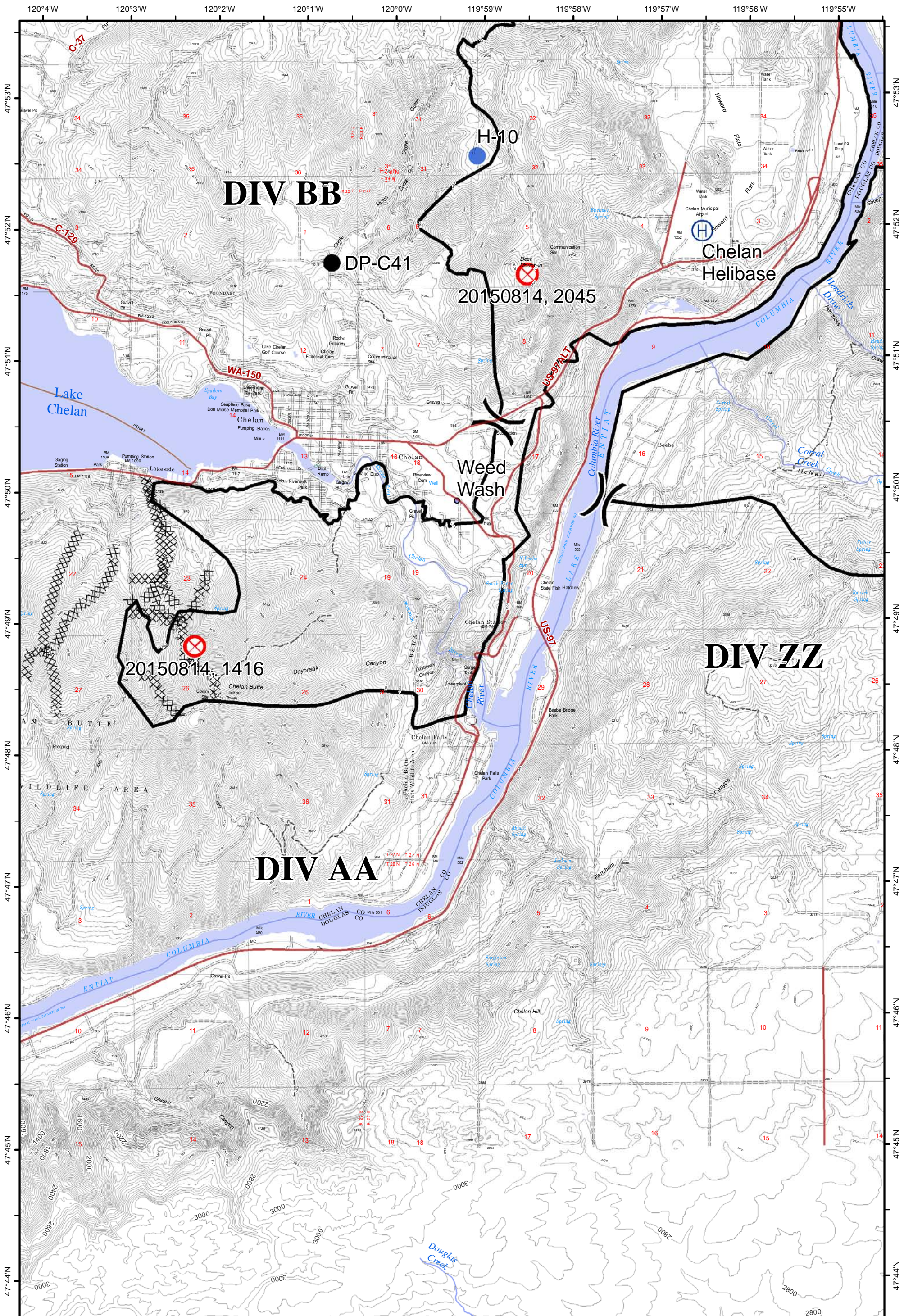


WA-SES-000701
IAP MAP
9/6/2015 DAY



- Drop Point
- Ⓢ Staging Area
- ⚠ Safety Zone
- ⊗ Completed Dozer Line
- Ⓢ Camp
- Ⓜ Water Source
- Ⓟ Pump
- ⊗ Fire Origin
- Ⓢ Spot Fire
- Ⓡ Repeater
- Ⓟ Helibase
- Ⓢ Helispot
- Ⓢ Division
- ⊗ Uncontrolled Fire Edge
- H Hand Line
- Completed Line
- R Road as Completed Line

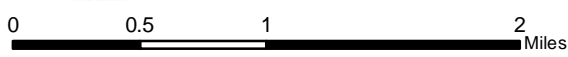




Chelan Complex



WA-SES-000701
IAP MAP
9/6/2015 DAY

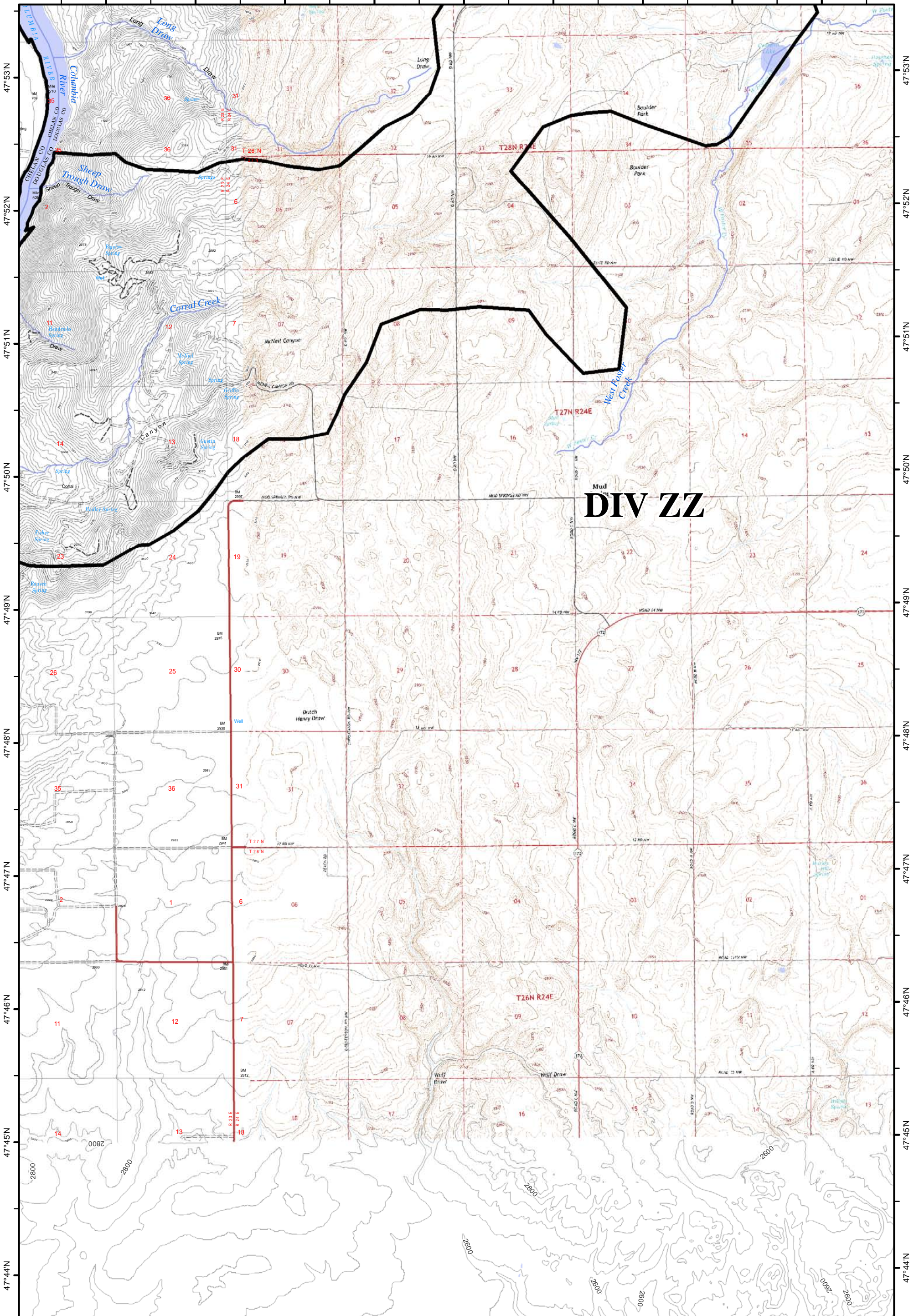


- Drop Point
- Staging Area
- Safety Zone
- Completed Dozer Line
- Camp
- Water Source
- Pump
- Uncontrolled Fire Edge
- Spot Fire
- Fire Origin
- Helibase
- Repeater
- Helispot
- Repeater
- Division
- H - H Hand Line
- Completed Line
- R - R Road as Completed Line



Map Projection & Datum: 1983 Harn
State Plane Wash South FIPS 4602 Ft

119°54'W 119°53'W 119°52'W 119°51'W 119°50'W 119°49'W 119°48'W 119°47'W 119°46'W



DIV ZZ




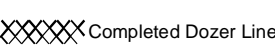



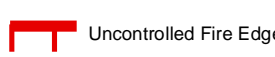



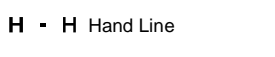


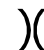
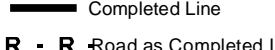
Chelan Complex



WA-SES-000701
IAP MAP
9/6/2015 DAY



0 0.5 1 2 Miles

-  Drop Point
-  Staging Area
-  Safety Zone
-  Completed Dozer Line
-  Camp
-  Water Source
-  Pump
-  Uncontrolled Fire Edge
-  Spot Fire
-  Fire Origin
-  Helispot
-  Completed Line
-  Helibase
-  Repeater
-  Division
-  R - R Road as Completed Line

Page: J5



Map Projection & Datum: 1983 Harn
State Plane Wash South FIPS 4602 Ft