

COUGAR CREEK FIRE

WA-YAA-000157

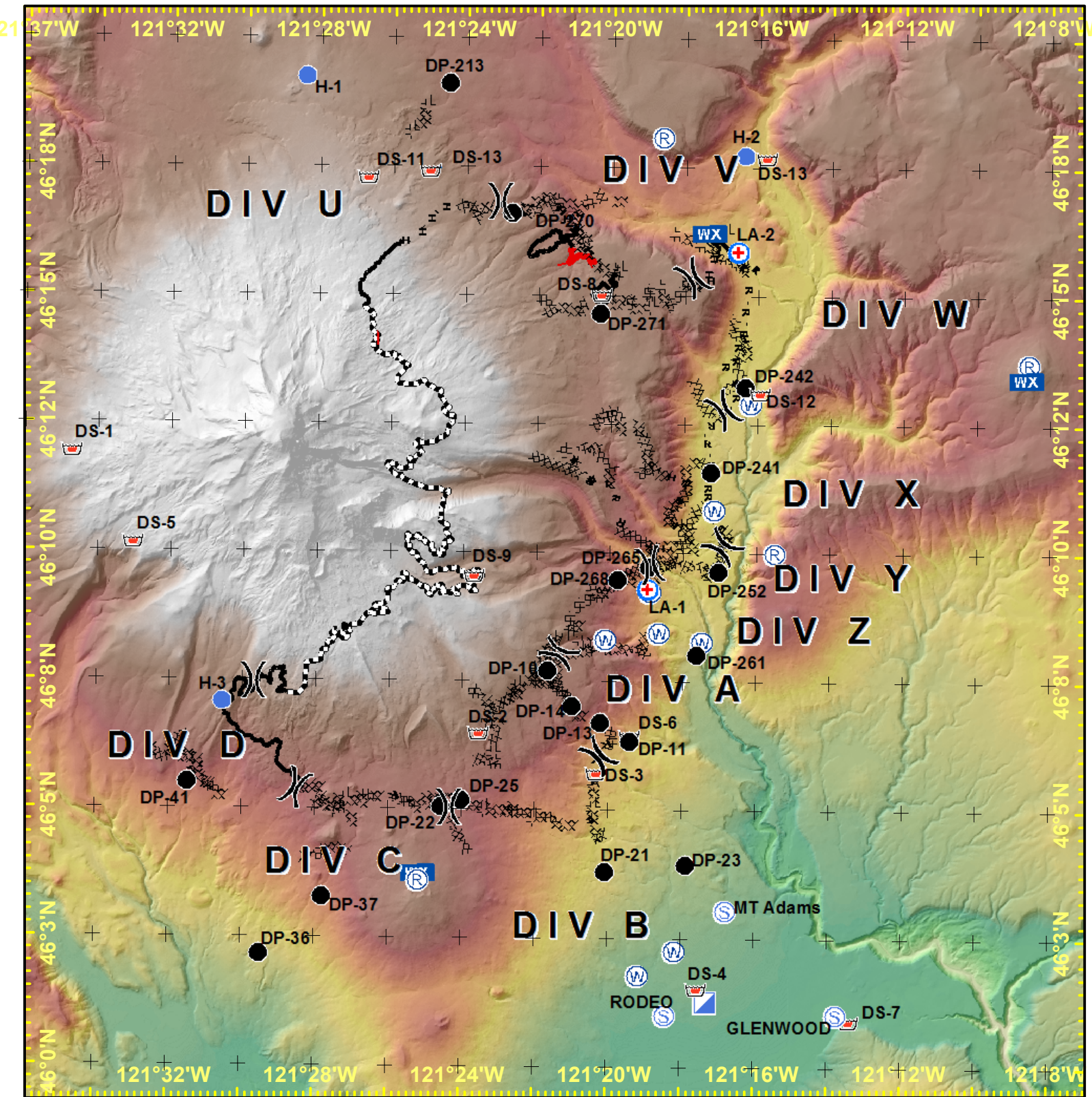
Pilots Map



September 6, 2015

Map Label	Name	Point Type	Long	Lat
DP-10	DP-10	Drop Point	-121° 21.9'	46° 7.735'
DP-36	DP-36	Drop Point	-121° 29.881'	46° 2.191'
DP-37	DP-37	Drop Point	-121° 28.14'	46° 3.312'
DP-22	DP-22	Drop Point	-121° 24.833'	46° 5.077'
DP-21	DP-21	Drop Point	-121° 20.255'	46° 3.824'
DP-23	DP-23	Drop Point	-121° 17.983'	46° 3.96'
DP-25	DP-25	Drop Point	-121° 24.279'	46° 5.198'
DP-11	DP-11	Drop Point	-121° 19.58'	46° 6.353'
DP-13	DP-13	Drop Point	-121° 20.405'	46° 6.73'
DP-14	DP-14	Drop Point	-121° 21.198'	46° 7.047'
DP-261	DP-261	Drop Point	-121° 17.739'	46° 8.047'
DP-265	DP-265	Drop Point	-121° 19.081'	46° 9.747'
DP-268	DP-268	Drop Point	-121° 19.955'	46° 9.503'
DP-252	DP-252	Drop Point	-121° 17.146'	46° 9.661'
DP-241	DP-241	Drop Point	-121° 17.366'	46° 11.598'
DP-41	DP-41	Drop Point	-121° 31.949'	46° 5.529'
DP-213	DP-213	Drop Point	-121° 24.791'	46° 19.143'
DP-242	DP-242	Drop Point	-121° 16.433'	46° 13.262'
DP-270	DP-270	Drop Point	-121° 22.991'	46° 16.628'
DP-271	DP-271	Drop Point	-121° 20.51'	46° 14.691'
Map Label	Name	Point Type	Long	Lat
H-2	H-2	Helispot	-121° 16.467'	46° 17.781'
H-1	H-1	Helispot	-121° 28.782'	46° 19.273'
H-3	H-3	Helispot	-121° 30.976'	46° 7.097'
LA-1	LA-1	MediVac Site	-121° 19.104'	46° 9.322'
LA-2	LA-2	MediVac Site	-121° 16.629'	46° 15.887'
Map Label	Name	Point Type	Long	Lat
DS-03	Pumpkin Dip	Dip Site	-121° 20.511'	46° 5.746'
DS-02	South Side Dip	Dip Site	-121° 23.809'	46° 6.512'
DS-01	Island Lake Dip	Dip Site	-121° 35.253'	46° 11.95'
DS-05	Westside Dip	Dip Site	-121° 33.532'	46° 10.192'
DS-04	Race Track Dip	Dip Site	-121° 17.649'	46° 1.569'
DS-07	East Lake Dip	Dip Site	-121° 13.417'	46° 0.931'
DS-06	Muddy Dip	Dip Site	-121° 19.567'	46° 6.466'
DS-08	North Lake Dip	Dip Site	-121° 20.47'	46° 15.058'
DS-09	Bench Dip	Dip Site	-121° 23.973'	46° 9.567'
DS-10	Two Lake Dip	Dip Site	-121° 26.096'	46° 21.411'
DS-11	Lava Dip	Dip Site	-121° 27.052'	46° 17.297'
DS-12	Klickitat Dip	Dip Site	-121° 16.022'	46° 13.139'
DS-13	Chaparral Dip	Dip Site	-121° 15.866'	46° 17.722'
DS-14	Bonnie Dip	Dip Site	-121° 25.296'	46° 17.437'

Map Date: 9/5/2015 Map Time: 10:16:52 PM



Legend



- | | | | | | |
|--|-----------------------|--|---------------------|--|----------------------------|
| | Division | | Mobile Weather Unit | | Uncontrolled Fire Edge |
| | Drop Point | | Repeater | | Completed Dozer Line |
| | Helispot | | Retardant/Mud Pit | | Completed Line |
| | Incident Command Post | | Staging Area | | Hand Line |
| | MediVac Site | | Water Source | | Road as Completed Line |
| | | | | | Ridge / Geographic Feature |

