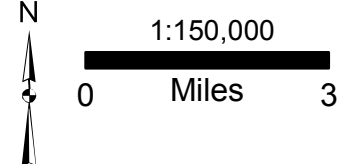
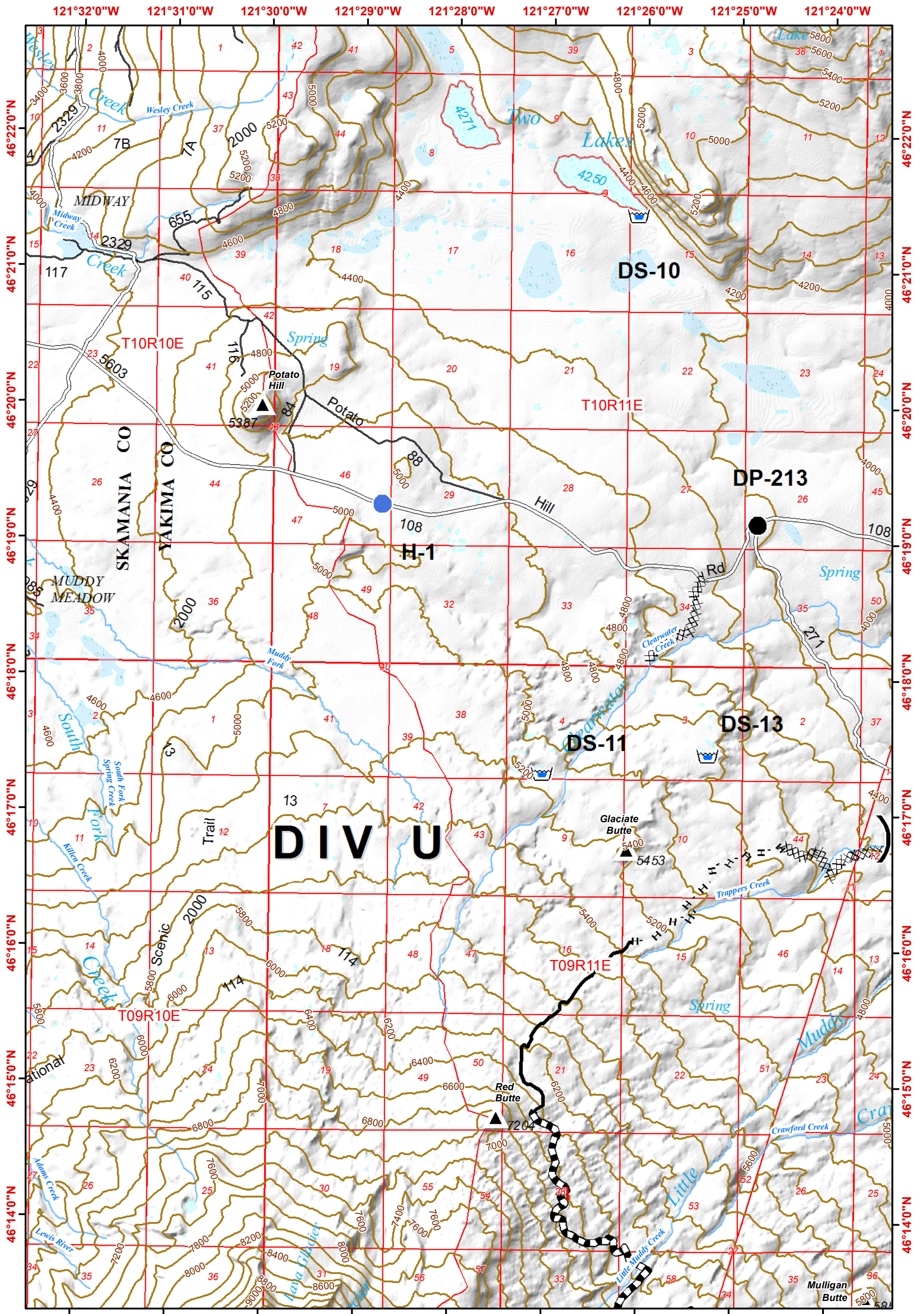


**Cougar Creek
IAP Map**
WA-YAA-000157
September 11, 2015

- | | | | | |
|------------------------|-----------------|----------------------|--------------|------------------------|
| Uncontrolled Fire Edge | Controlled Line | Completed Dozer Line | Repeater | MediVac Site |
| Helispot | Drop Point | Road Blocks | Water Source | Road Blocks |
| Road as Line | Spot Fire | Helibase | Dip Site | PMV- Potential Medivac |
| Ridge/Rock Face | | | | |



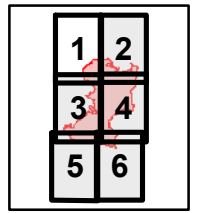


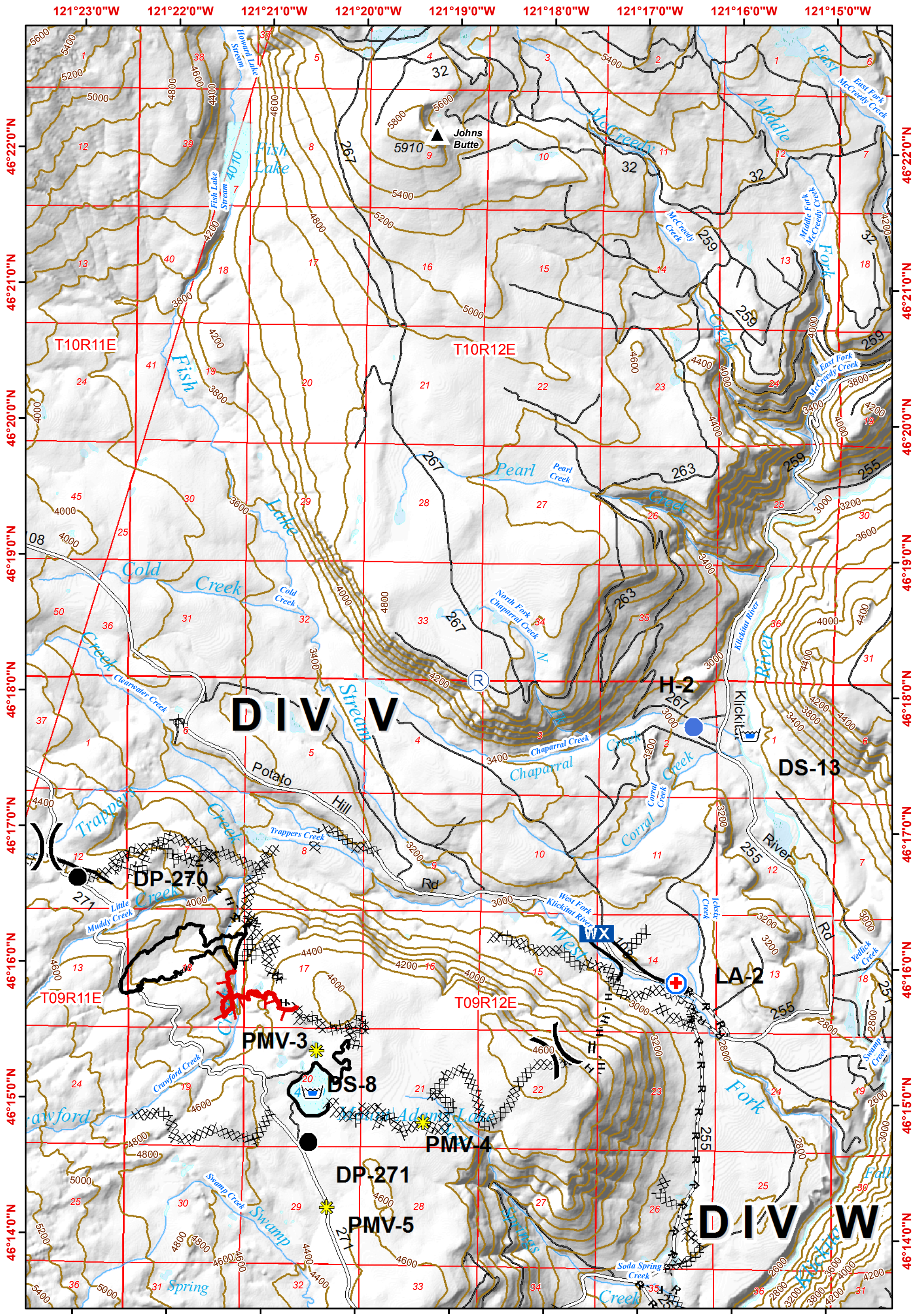
Cougar Creek IAP Map

WA-YAA-000157
September 11, 2015

- Uncontrolled Fire Edge
- Controlled Line
- Completed Dozer Line
- R - R - Road as Line
- Ridge/Rock Face
- Road Blocks
- Division
- Helispot
- Drop Point
- Spot Fire
- MediVac Site
- Repeater
- Water Source
- Dip Site
- Helibase
- PMV- Potential Medivac

1:48,000
0 0.25 0.5 1 Miles
Contours at 200 Foot

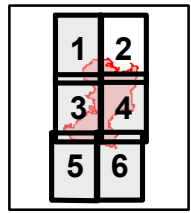


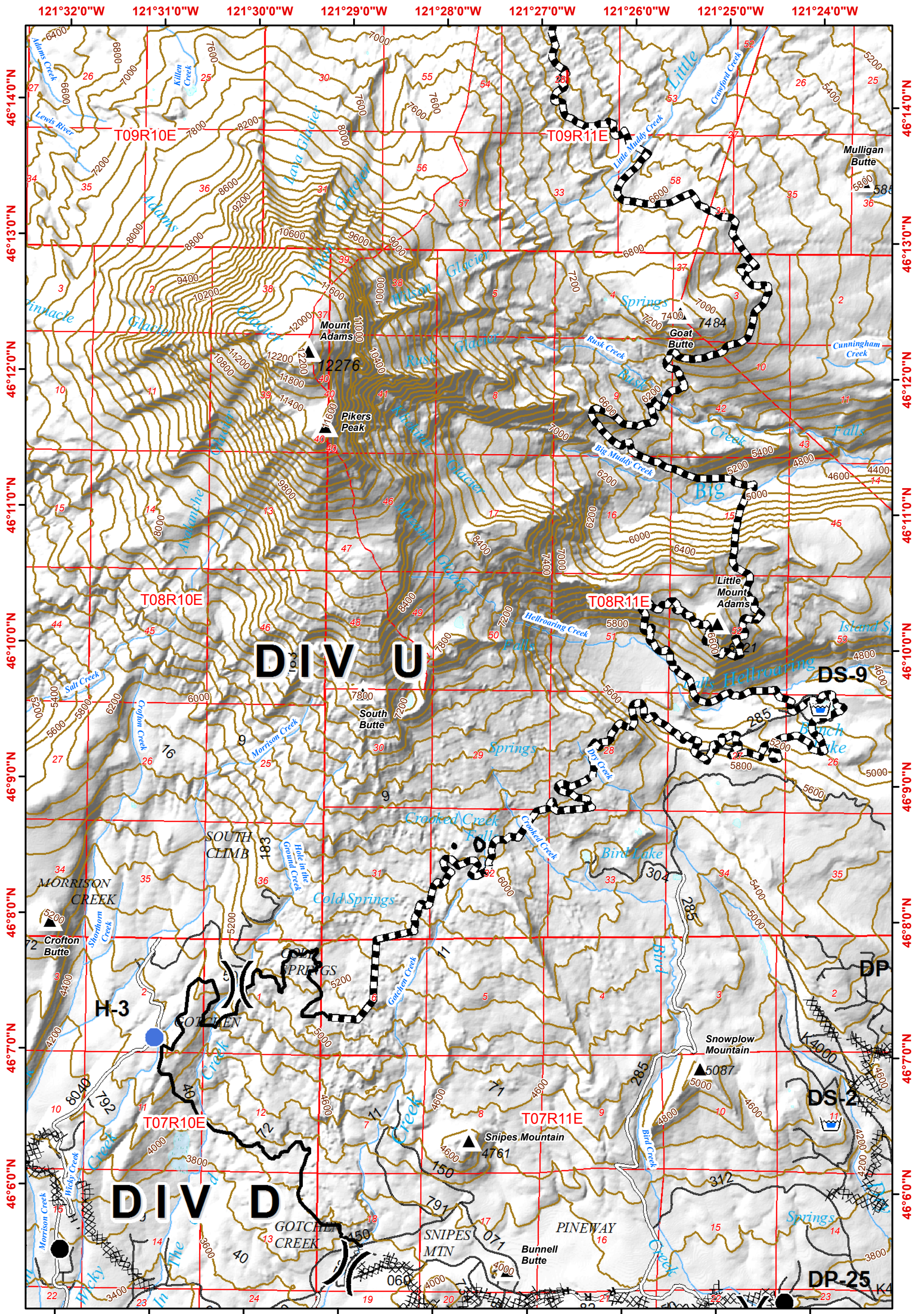


Cougar Creek IAP Map
 WA-YAA-000157
 September 11, 2015

- Uncontrolled Fire Edge
- Controlled Line
- Completed Dozer Line
- R - R - Road as Line
- Ridge/Rock Face
- Road Blocks
- Division
- Helispot
- Drop Point
- Spot Fire
- MediVac Site
- Repeater
- Water Source
- Dip Site
- Helibase
- PMV- Potential Medivac

1:48,000
 0 0.25 0.5 1 Miles
 Contours at 200 Foot

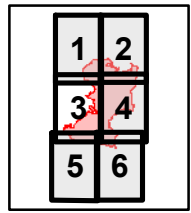


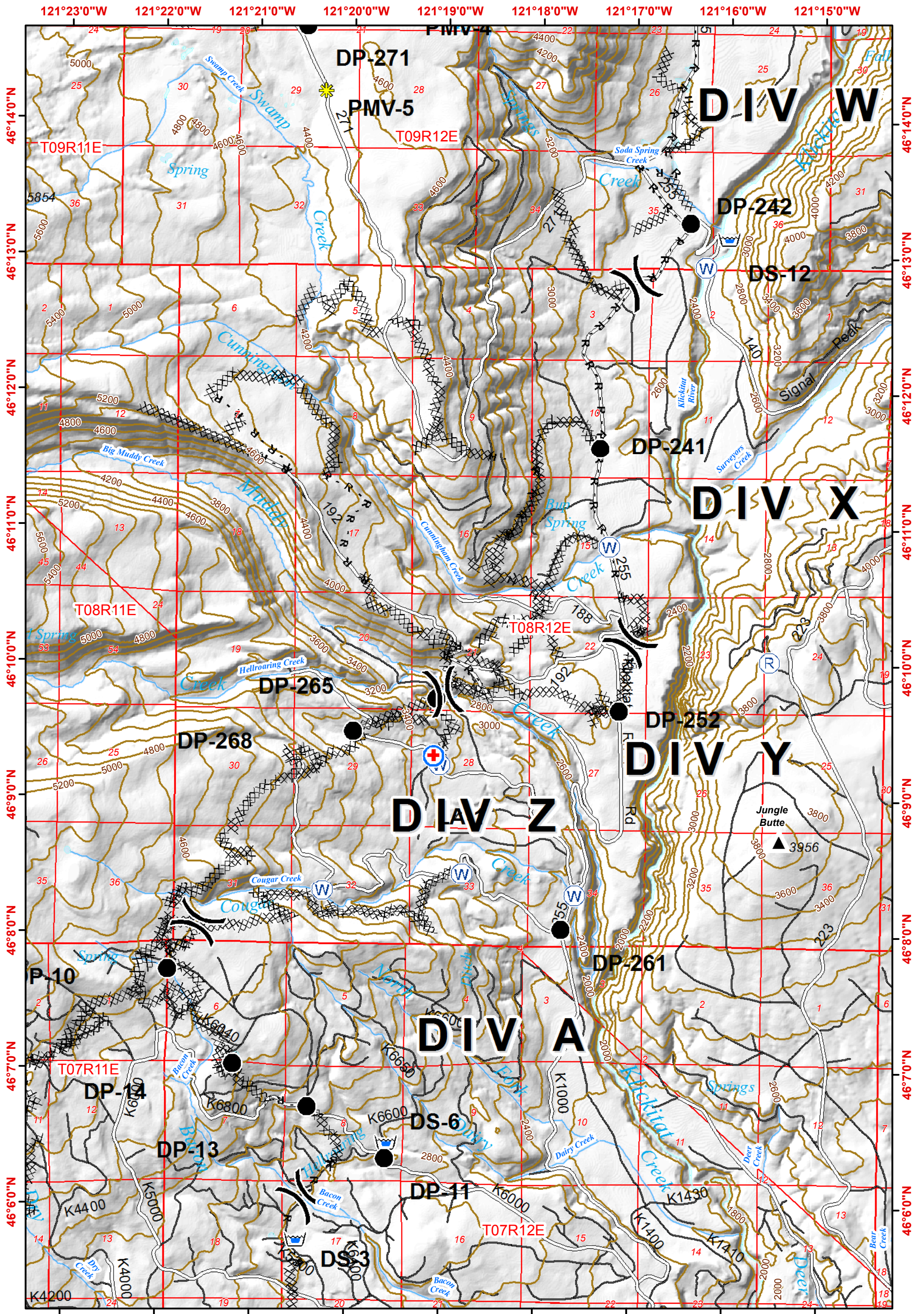


Cougar Creek IAP Map
 WA-YAA-000157
 September 11, 2015

- Uncontrolled Fire Edge
- Controlled Line
- Completed Dozer Line
- R - R - Road as Line
- Ridge/Rock Face
- Road Blocks
- Division
- Helispot
- Drop Point
- Spot Fire
- MediVac Site
- Repeater
- Water Source
- Dip Site
- Helibase
- PMV- Potential Medivac

1:48,000
 0 0.25 0.5 1 Miles
 Contours at 200 Foot

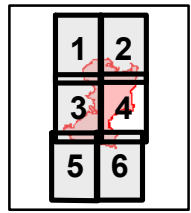




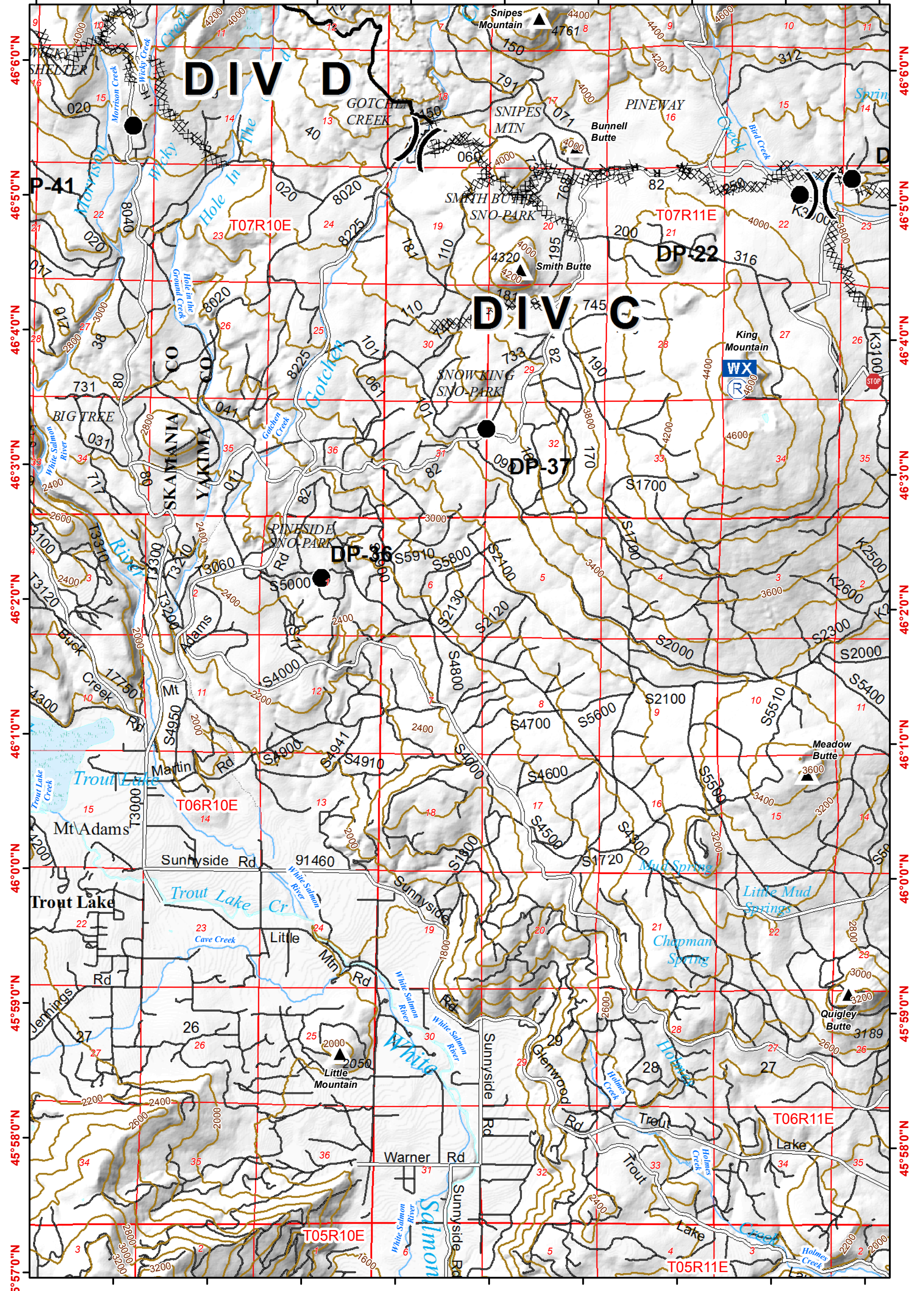
Cougar Creek IAP Map
 WA-YAA-000157
 September 11, 2015

- Uncontrolled Fire Edge
- Controlled Line
- Completed Dozer Line
- R - R - Road as Line
- Ridge/Rock Face
- Road Blocks
- Division
- Helispot
- Drop Point
- Spot Fire
- MediVac Site
- Repeater
- Water Source
- Dip Site
- Helibase
- PMV- Potential Medivac




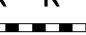
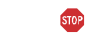




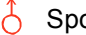



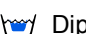


1:48,000
 0 0.25 0.5 1 Miles
 Contours at 200 Foot



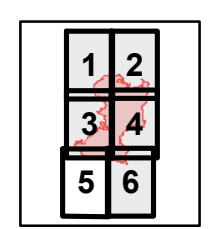
121°33'0"W 121°32'0"W 121°31'0"W 121°30'0"W 121°29'0"W 121°28'0"W 121°27'0"W 121°26'0"W 121°25'0"W 121°24'0"W



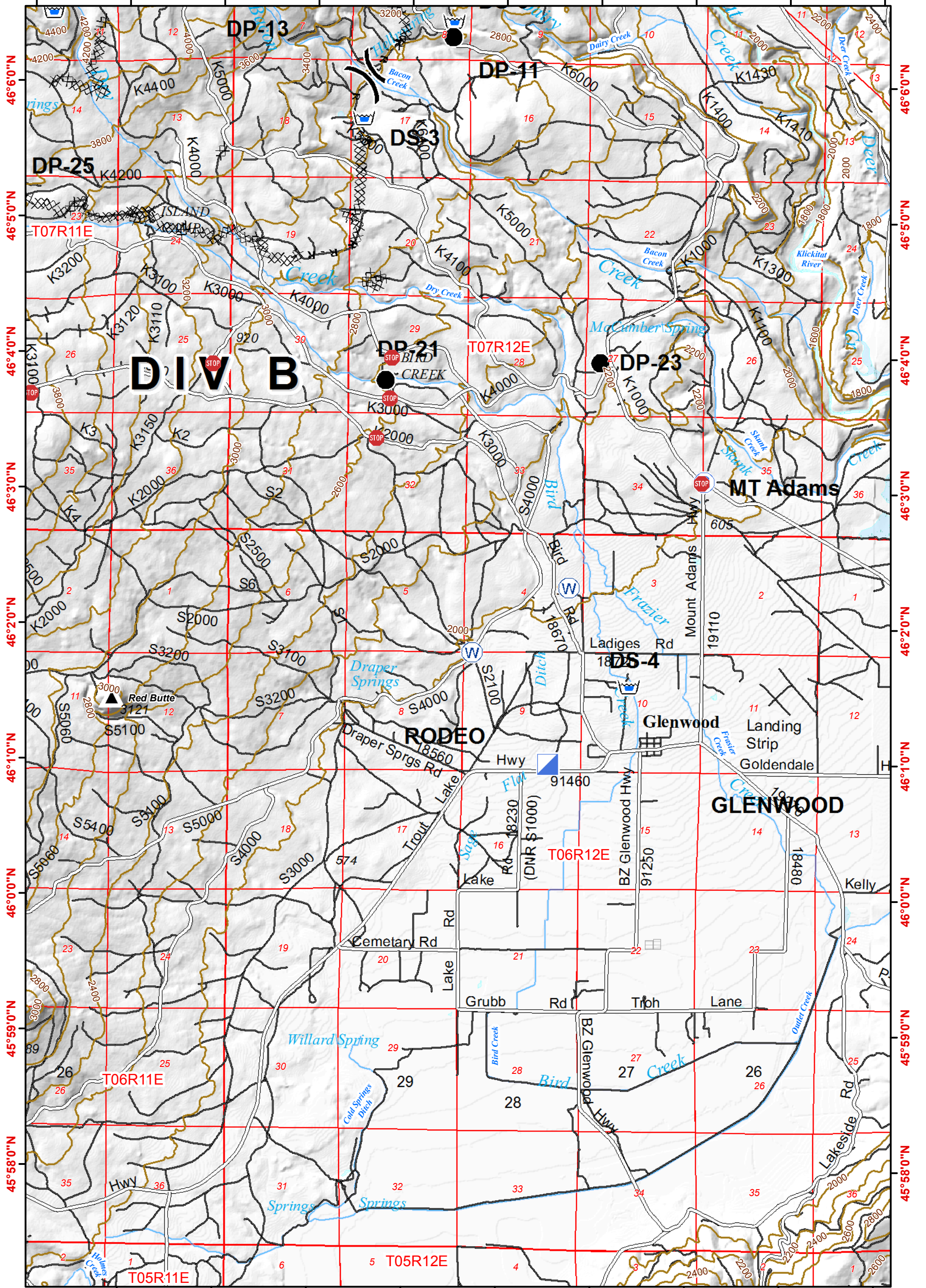
Cougar Creek IAP Map
WA-YAA-000157
September 11, 2015

-  Uncontrolled Fire Edge
-  Controlled Line
-  Completed Dozer Line
-  R - R - Road as Line
-  Ridge/Rock Face
-  Road Blocks
-  Division
-  Helispot
-  Drop Point
-  Spot Fire
-  MediVac Site
-  Repeater
-  Water Source
-  Dip Site
-  Helibase
-  PMV- Potential Medivac




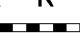












Scale: 1:48,000
0 0.25 0.5 1 Miles
Contours at 200 Foot



121°24'0"W 121°23'0"W 121°22'0"W 121°21'0"W 121°20'0"W 121°19'0"W 121°18'0"W 121°17'0"W 121°16'0"W 121°15'0"W



WA-YAA-000157
September 11, 2015

-  Uncontrolled Fire Edge
-  Controlled Line
-  Completed Dozer Line
-  R - R - Road as Line
-  Ridge/Rock Face
-  Road Blocks
-  Division
-  Helispot
-  Drop Point
-  Spot Fire
-  MediVac Site
-  Repeater
-  Water Source
-  Dip Site
-  Helibase
-  PMV- Potential Medivac

N

1:48,000

0 0.25 0.5 1 Miles

Contours at 200 Foot

Page 6 of 6

1	2
3	4
5	6