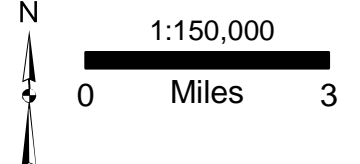
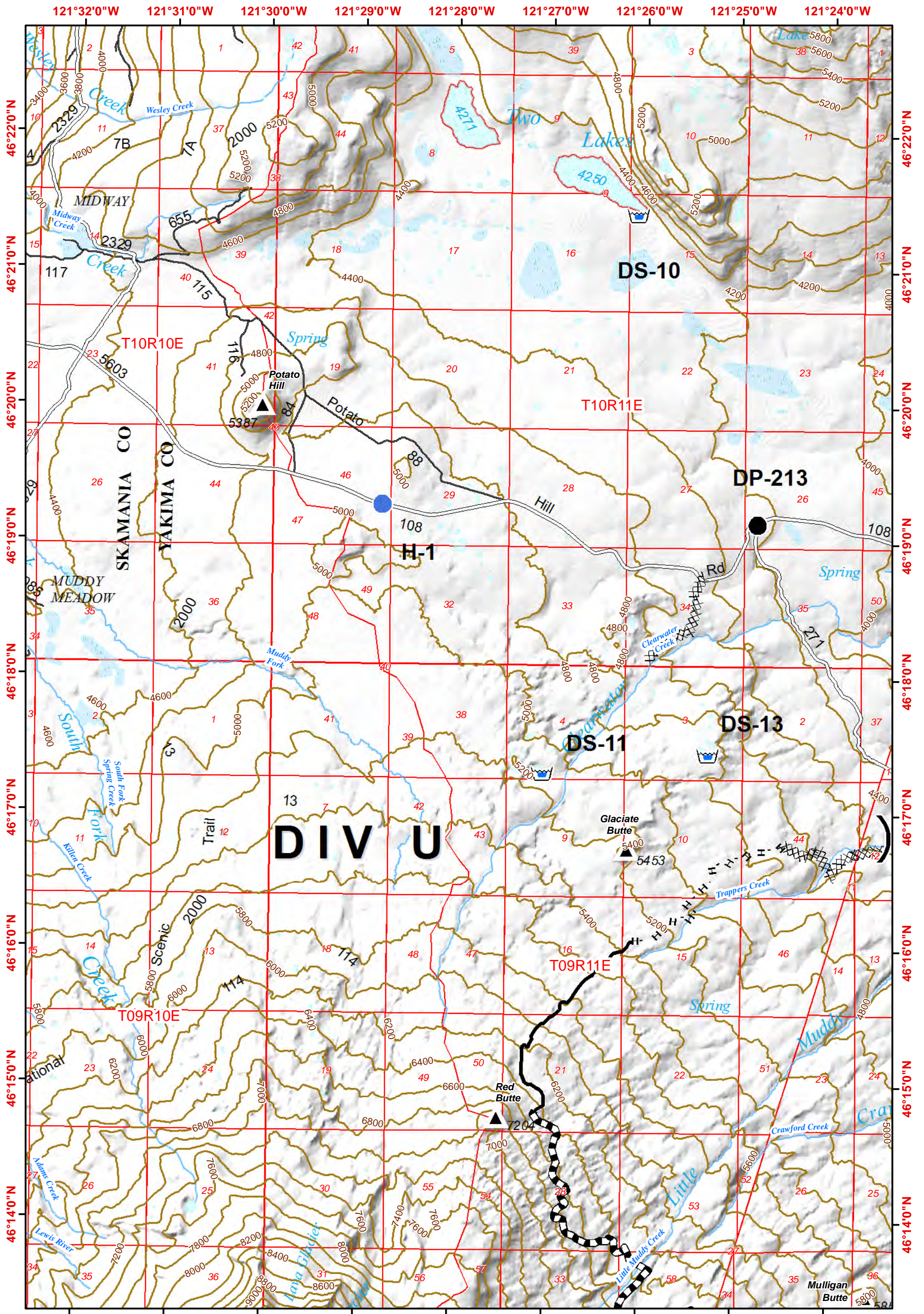


**Cougar Creek IAP Map**  
 WA-YAA-000157  
 September 14, 2015

- |                        |                 |                      |              |                        |
|------------------------|-----------------|----------------------|--------------|------------------------|
| Uncontrolled Fire Edge | Controlled Line | Completed Dozer Line | Repeater     | MediVac Site           |
| Helispot               | Drop Point      | Road Blocks          | Water Source | Road Blocks            |
| Road as Line           | Spot Fire       | Water Source         | Water Source | PMV- Potential Medivac |
| Ridge/Rock Face        | Helibase        | Water Source         | Water Source | Helibase               |



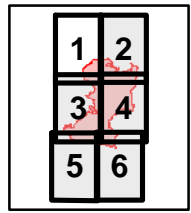


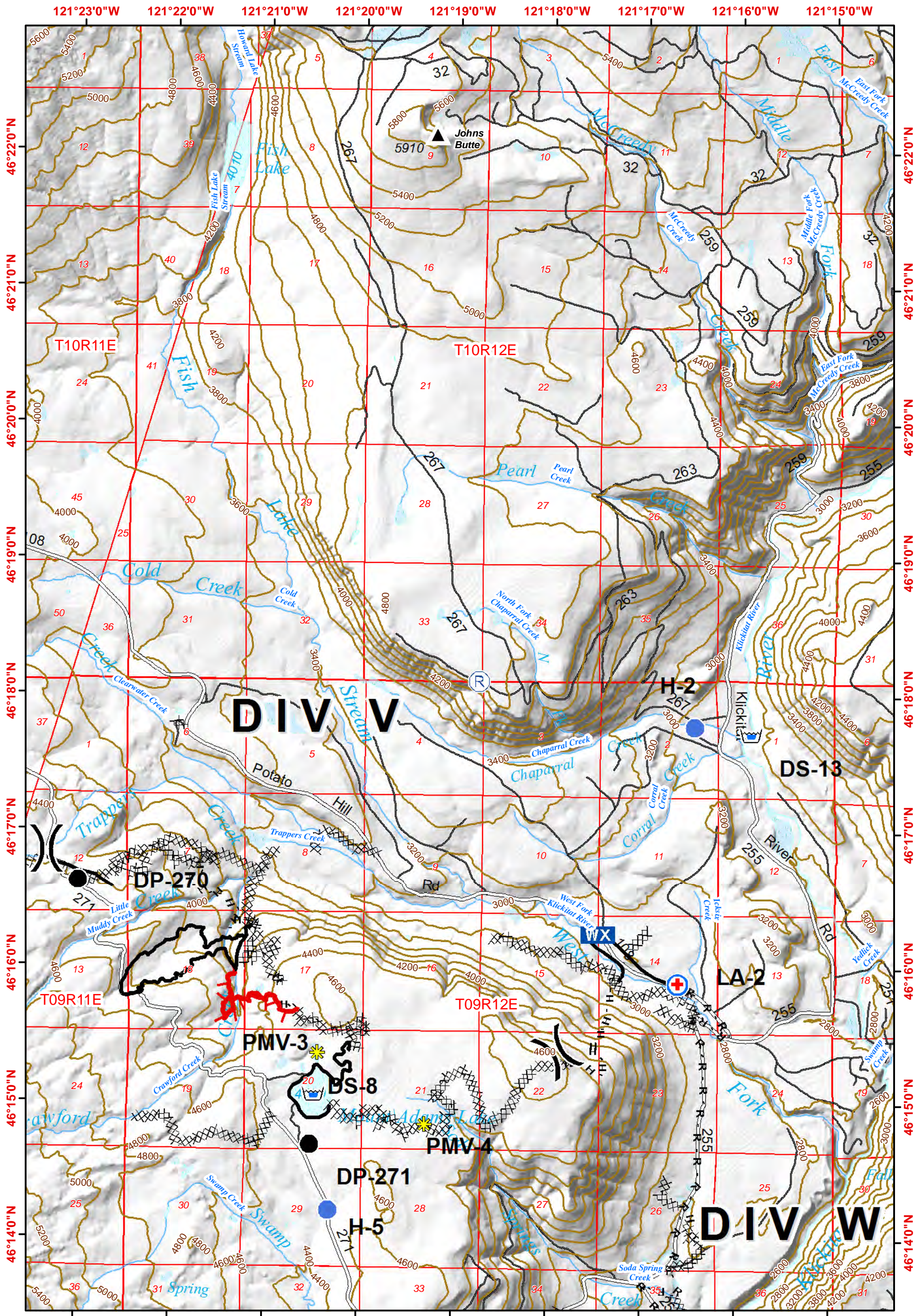
**Cougar Creek IAP Map**

WA-YAA-000157  
September 14, 2015

- Uncontrolled Fire Edge
- Controlled Line
- Completed Dozer Line
- R - R - Road as Line
- Ridge/Rock Face
- Road Blocks
- Division
- Helispot
- Drop Point
- Spot Fire
- MediVac Site
- Repeater
- Water Source
- Dip Site
- Helibase
- PMV- Potential Medivac

1:48,000  
0 0.25 0.5 1 Miles  
Contours at 200 Foot

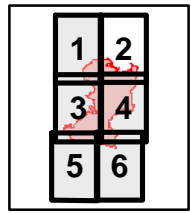


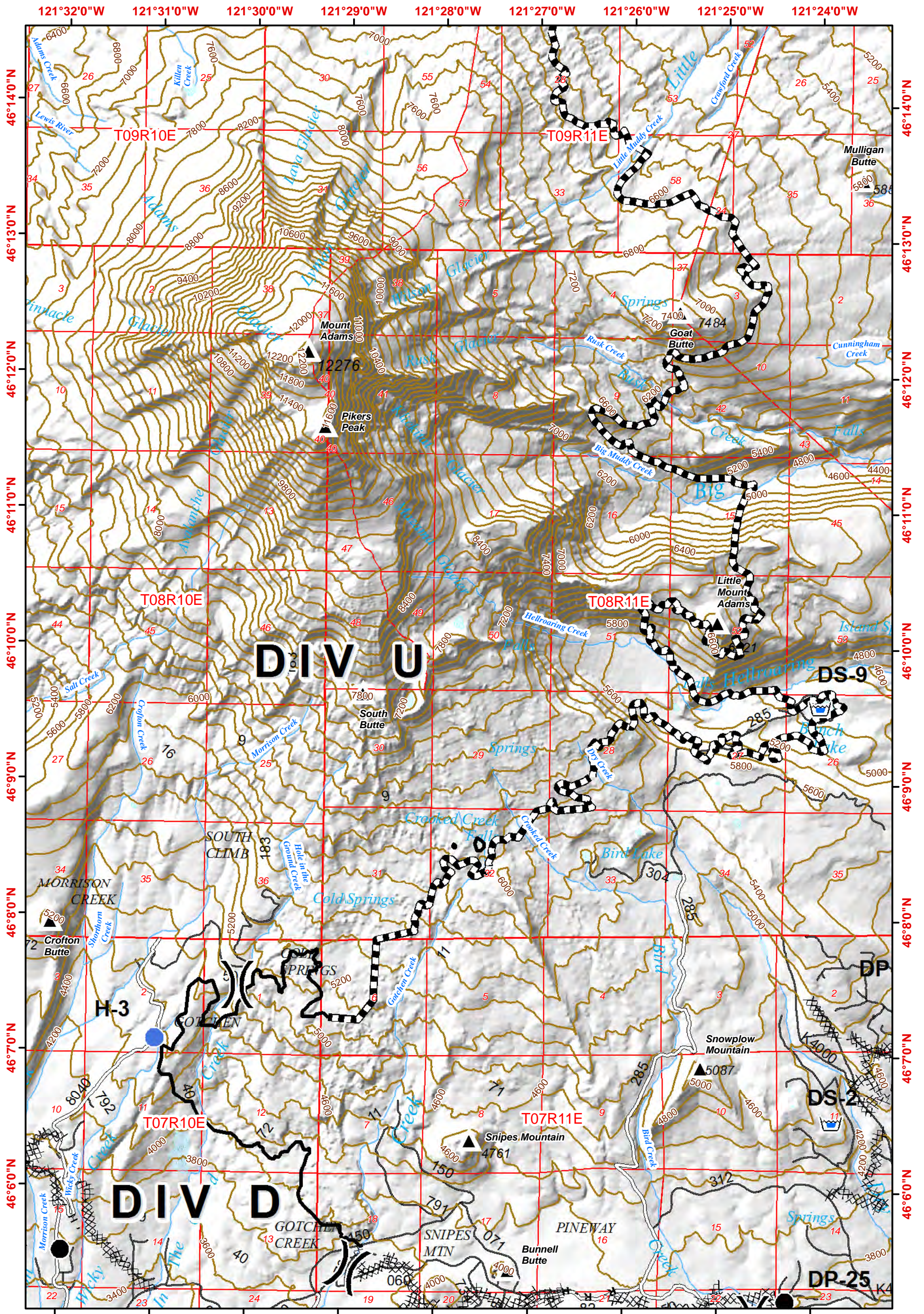


**Cougar Creek IAP Map**  
 WA-YAA-000157  
 September 14, 2015

- Uncontrolled Fire Edge
- Controlled Line
- Completed Dozer Line
- R - R - Road as Line
- Ridge/Rock Face
- Road Blocks
- Division
- Helispot
- Drop Point
- Spot Fire
- MediVac Site
- Repeater
- Water Source
- Dip Site
- Helibase
- PMV- Potential Medivac

1:48,000  
 0 0.25 0.5 1 Miles  
 Contours at 200 Foot

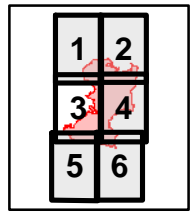


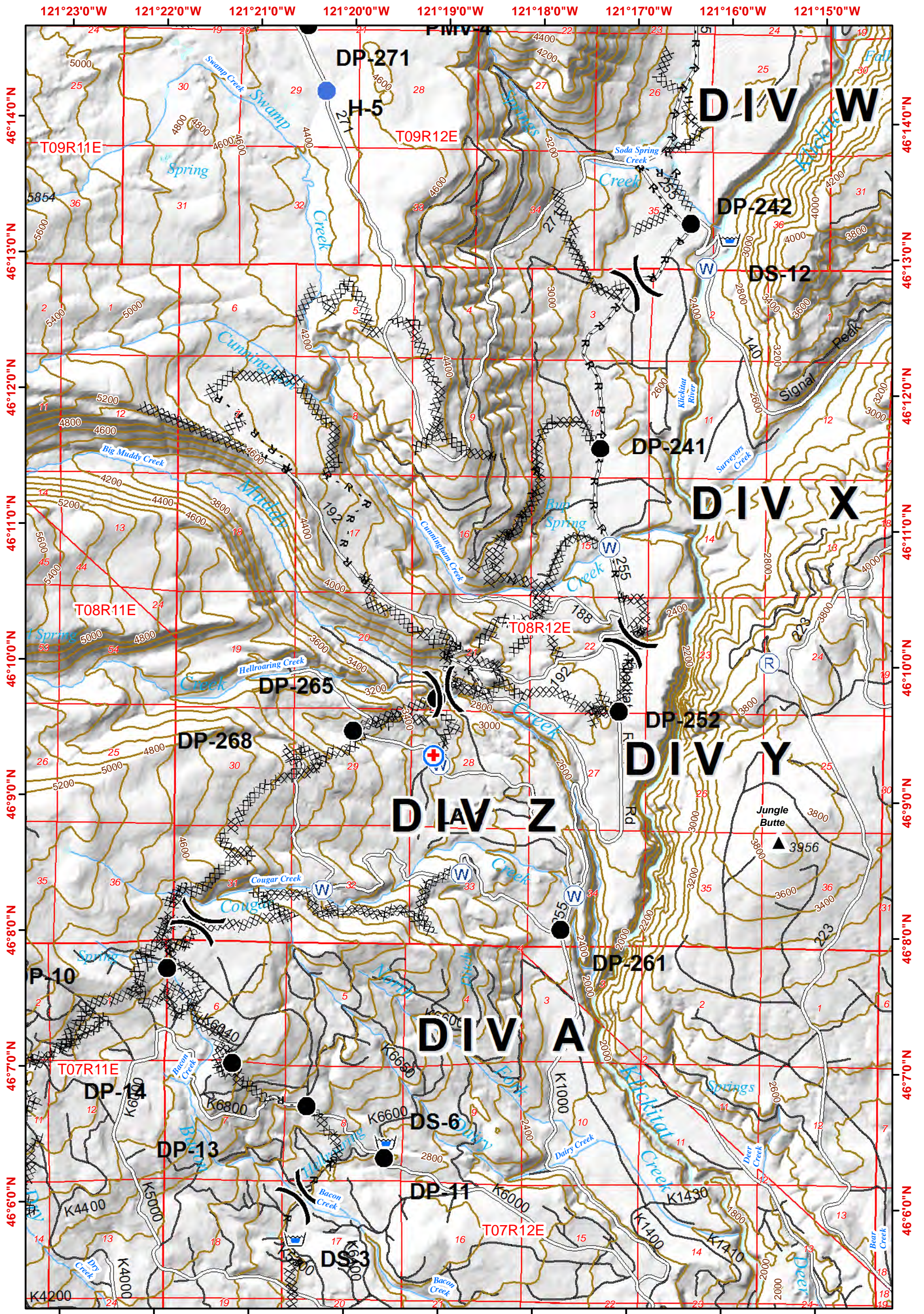


**Cougar Creek IAP Map**  
 WA-YAA-000157  
 September 14, 2015

- Uncontrolled Fire Edge
- Controlled Line
- Completed Dozer Line
- R - R - Road as Line
- Ridge/Rock Face
- Road Blocks
- Division
- Helispot
- Drop Point
- Spot Fire
- MediVac Site
- Repeater
- Water Source
- Dip Site
- Helibase
- PMV- Potential Medivac

1:48,000  
 0 0.25 0.5 1 Miles  
 Contours at 200 Foot





**Cougar Creek IAP Map**

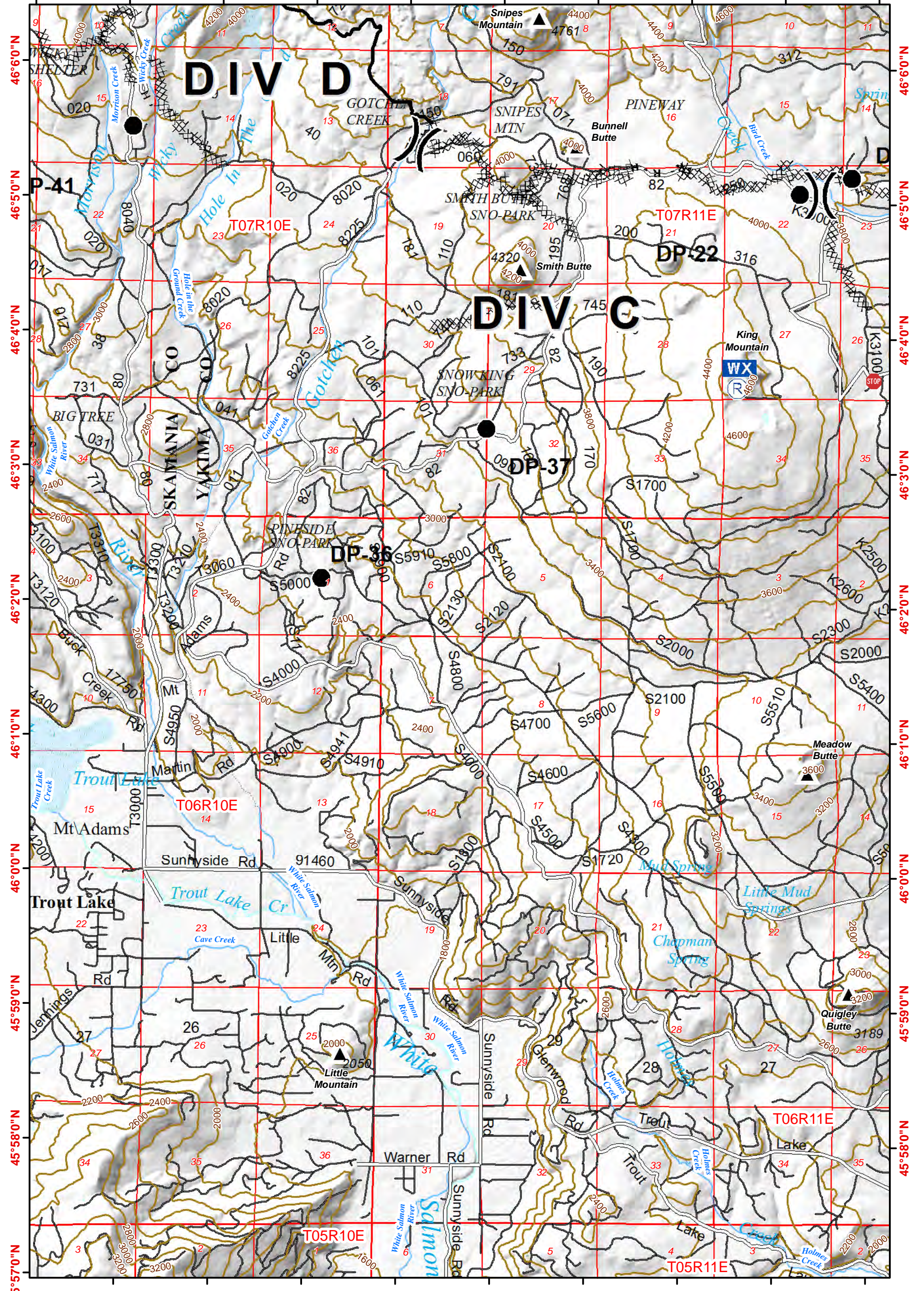
WA-YAA-000157  
September 14, 2015

- Uncontrolled Fire Edge
- Controlled Line
- Completed Dozer Line
- R - R - Road as Line
- Ridge/Rock Face
- Road Blocks
- Division
- Helispot
- Drop Point
- Spot Fire
- MediVac Site
- Repeater
- Water Source
- Dip Site
- Helibase
- PMV- Potential Medivac

1:48,000  
0 0.25 0.5 1 Miles  
Contours at 200 Foot

1	2
3	4
5	6

121°33'0"W 121°32'0"W 121°31'0"W 121°30'0"W 121°29'0"W 121°28'0"W 121°27'0"W 121°26'0"W 121°25'0"W 121°24'0"W

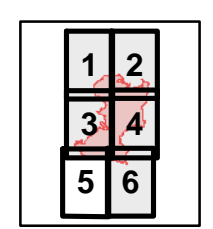


**Cougar Creek IAP Map**  
WA-YAA-000157  
September 14, 2015

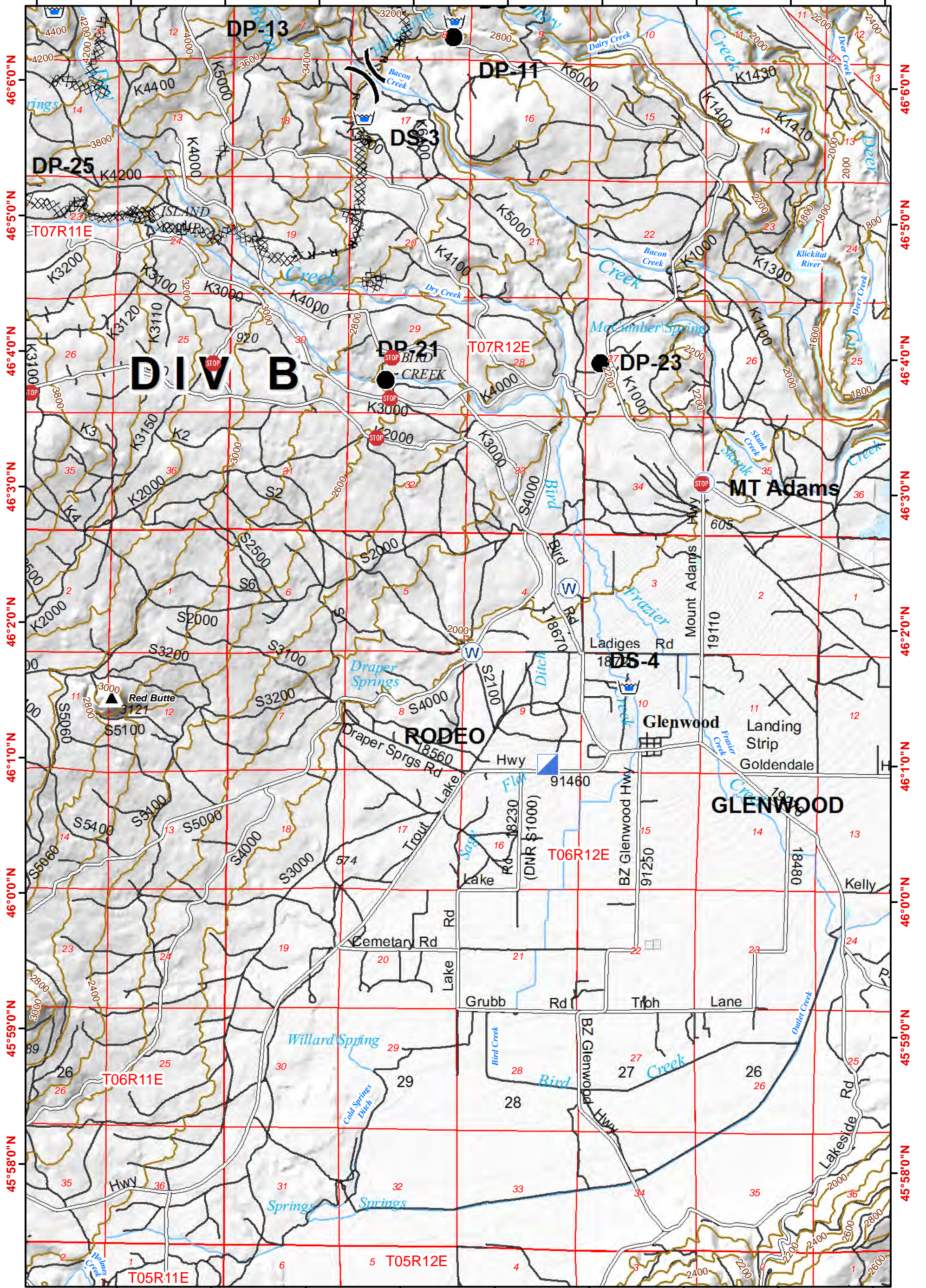
- Uncontrolled Fire Edge
- Controlled Line
- Completed Dozer Line
- R - R - Road as Line
- Ridge/Rock Face
- Road Blocks
- Division
- Helispot
- Drop Point
- Spot Fire
- MediVac Site
- Repeater
- Water Source
- Dip Site
- Helibase
- PMV- Potential Medivac

1:48,000  
0 0.25 0.5 1 Miles  
Contours at 200 Foot

Page 5 of 6



















121°24'0"W 121°23'0"W 121°22'0"W 121°21'0"W 121°20'0"W 121°19'0"W 121°18'0"W 121°17'0"W 121°16'0"W 121°15'0"W



**Cougar Creek IAP Map**

WA-YAA-000157  
September 14, 2015

-  Uncontrolled Fire Edge
-  Controlled Line
-  Completed Dozer Line
-  R - R - Road as Line
-  Ridge/Rock Face
-  Road Blocks
-  Division
-  Helispot
-  Drop Point
-  Spot Fire
-  MediVac Site
-  Repeater
-  Water Source
-  Dip Site
-  Helibase
-  PMV- Potential Medivac

1:48,000  
0 0.25 0.5 1 Miles  
Contours at 200 Foot

