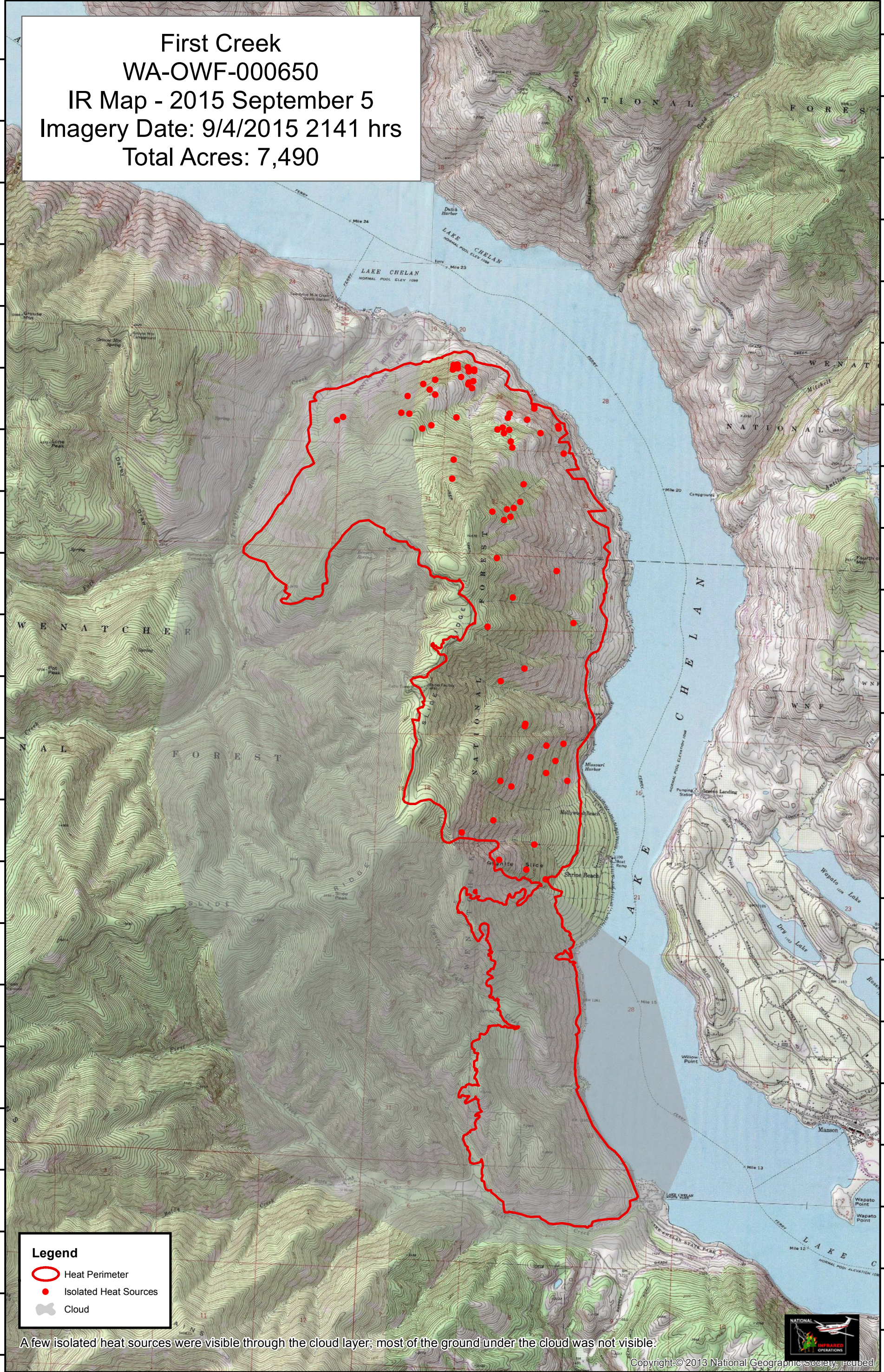


120°20'0"W 120°19'0"W 120°18'0"W 120°17'0"W 120°16'0"W 120°15'0"W 120°14'0"W 120°13'0"W 120°12'0"W 120°11'0"W 120°10'0"W




48°1'30"N
48°1'0"N
48°0'30"N
48°0'0"N
47°59'30"N
47°59'0"N
47°58'30"N
47°58'0"N
47°57'30"N
47°57'0"N
47°56'30"N
47°56'0"N
47°55'30"N
47°55'0"N
47°54'30"N
47°54'0"N
47°53'30"N
47°53'0"N
47°52'30"N
47°52'0"N
47°51'30"N
47°51'0"N

48°2'0"N
48°1'30"N
48°1'0"N
48°0'30"N
48°0'0"N
47°59'30"N
47°59'0"N
47°58'30"N
47°58'0"N
47°57'30"N
47°57'0"N
47°56'30"N
47°56'0"N
47°55'30"N
47°55'0"N
47°54'30"N
47°54'0"N
47°53'30"N
47°53'0"N
47°52'30"N
47°52'0"N
47°51'30"N
47°51'0"N

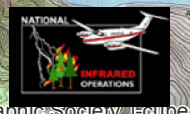
First Creek
WA-OWF-000650
IR Map - 2015 September 5
Imagery Date: 9/4/2015 2141 hrs
Total Acres: 7,490



Legend

-  Heat Perimeter
-  Isolated Heat Sources
-  Cloud

A few isolated heat sources were visible through the cloud layer; most of the ground under the cloud was not visible.



Copyright © 2013 National Geographic Society, Inc.

IRIN: Lauren Miller
Map Produced: 9/5/2015 0100 hrs

