

120°57'0"W

120°56'0"W

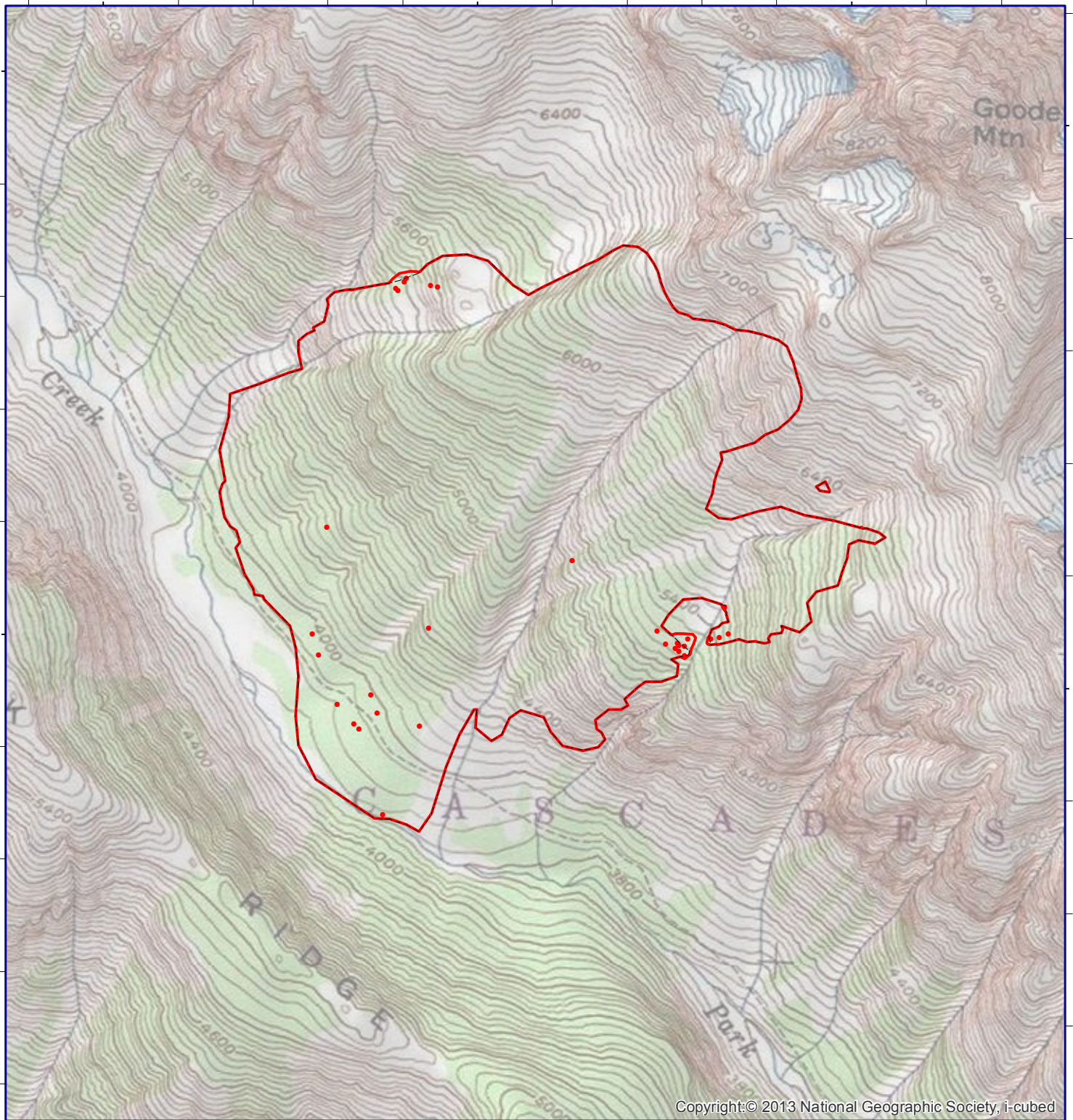
120°55'0"W

48°29'0"N

48°29'0"N

48°28'0"N

48°28'0"N



Copyright:© 2013 National Geographic Society, i-cubed

120°57'0"W

120°56'0"W

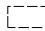


120°55'0"W



INFRARED MAP
 Goode (WA-NCP-000031)
 Flight: Aug 19, 2015 @ 2135 PDT
 IRIN Cheron Ferland (Oregon)
 IRIN (t): Dale Gough (Oregon)



Legend

-  Previous IRIN Perimeter (20150819_0009)
-  Isolated Heat
-  Heat Perimeter

