

**HIGHWAY 8
WA-SPD-050595
IAP Map
T04R21E**

Datum: North American 1983 HARN

08/09/2015

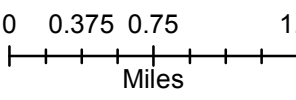
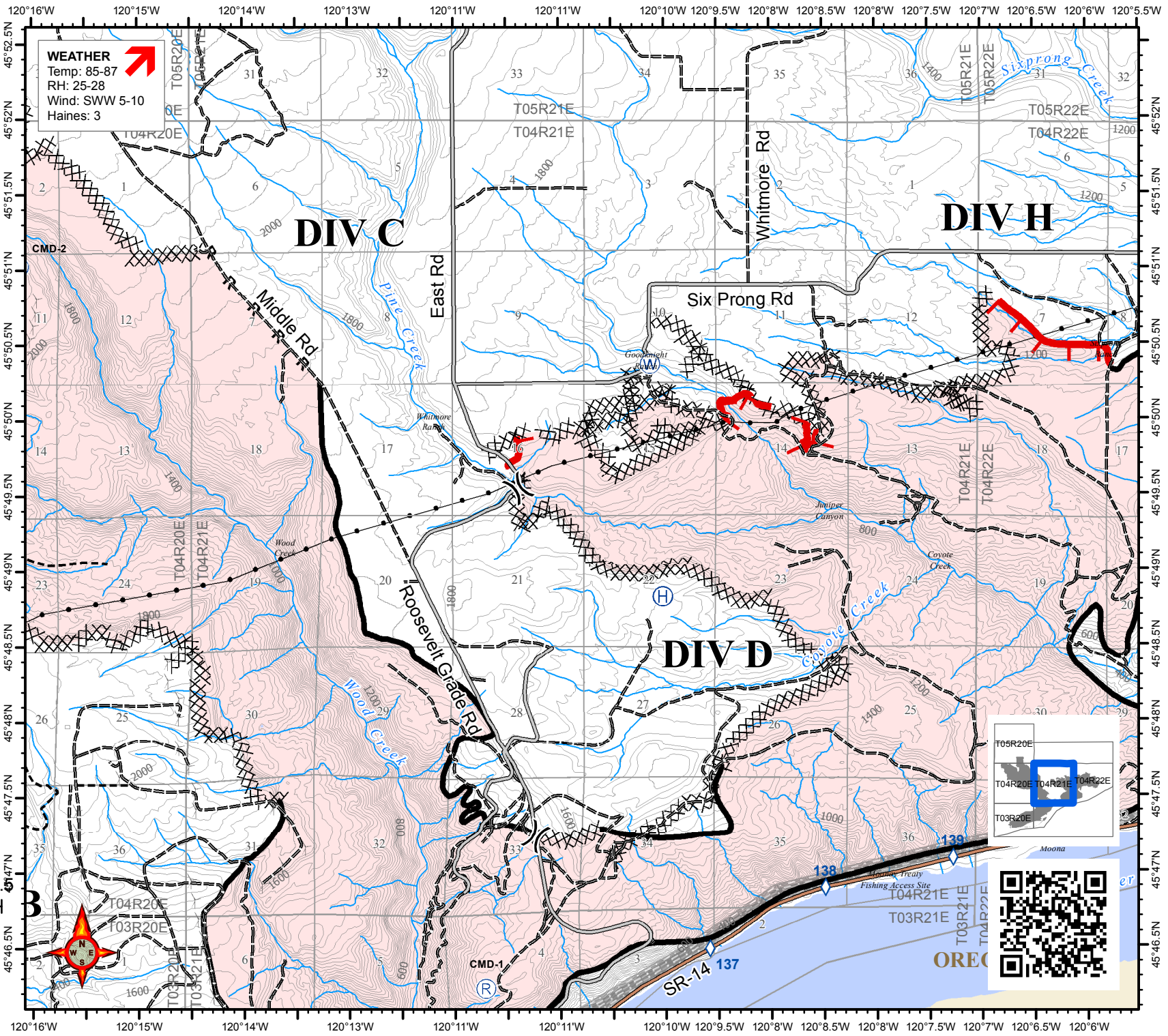
Day Shift

Approx: 32,900 ac

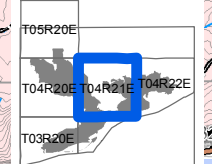
WEATHER
Temp: 85-87
RH: 25-28
Wind: SWW 5-10
Haines: 3



- Division Break
- Helibase
- Repeater
- Water Source
- Wind Turbine
- Uncontrolled Fire Edge
- Completed Dozer Line
- Completed Line
- Road as Completed Line
- Highway
- Primary Road
- Light-Duty Road
- Unimproved Road
- 4x4 Road
- Power Transmission Line
- Pipeline



S. Bushnell
08 08 15
2022 Hours



OREG