

# HIGHWAY 8 WA-SPD-050595 IAP Map T04R22E

Datum: North American 1983 HARN

08/09/2015

Day Shift

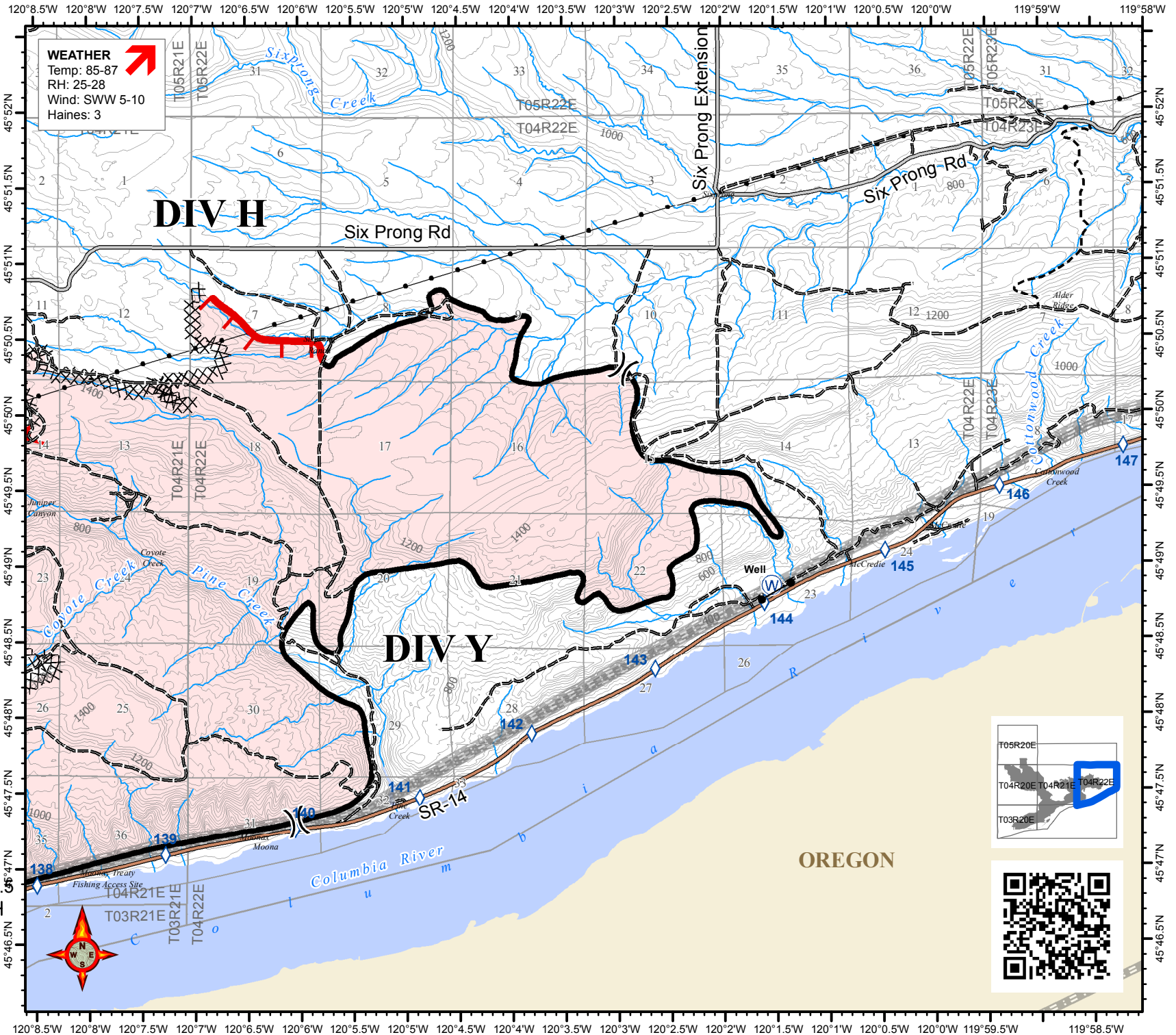
Approx: 32,900 ac

**WEATHER**

Temp: 85-87  
RH: 25-28  
Wind: SWW 5-10  
Haines: 3



- Division Break
- Water Source
- Gate
- Uncontrolled Fire Edge
- Completed Dozer Line
- Completed Line
- Highway
- Primary Road
- Light-Duty Road
- Unimproved Road
- 4x4 Road
- Power Transmission Line
- Pipeline



S. Bushnell  
08 08 15  
2022 Hours

OREGON