

121°36'0"W

121°35'0"W

T08R10E

Burn  
Road

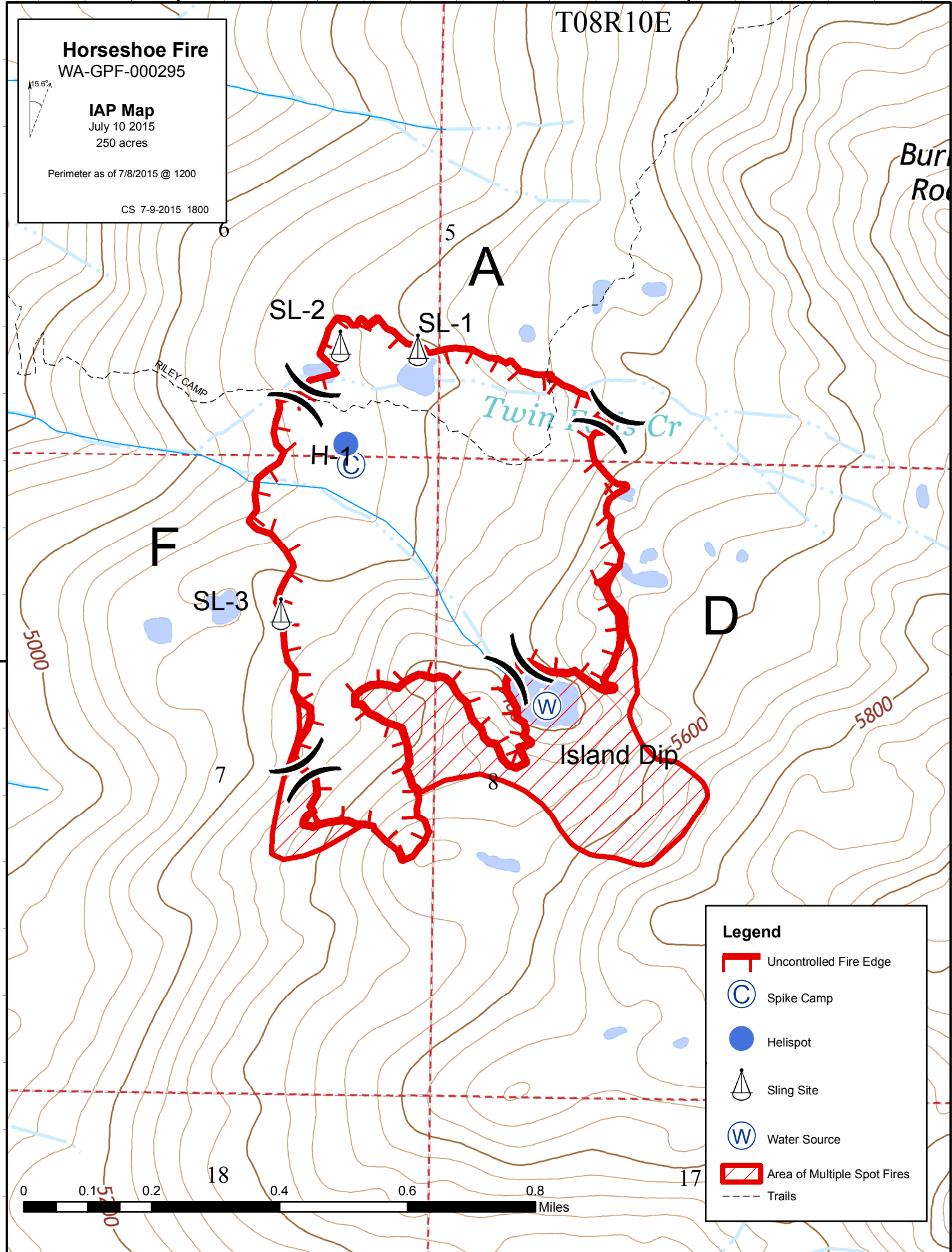
**Horseshoe Fire**  
WA-GPF-000295

**IAP Map**  
July 10 2015  
250 acres

Perimeter as of 7/8/2015 @ 1200

CS 7-9-2015 1800

46°12'0"N



**Legend**

- Uncontrolled Fire Edge
- Spike Camp
- Helispot
- Sling Site
- Water Source
- Area of Multiple Spot Fires
- Trails

