

121°43'0"W 121°42'0"W 121°41'0"W 121°40'0"W 121°39'0"W 121°38'0"W 121°37'0"W 121°36'0"W 121°35'0"W 121°34'0"W 121°33'0"W 121°32'0"W 121°31'0"W

Horseshoe Fire
WA-GPF-000295

Pilot Map
July 10 2015
250 acres

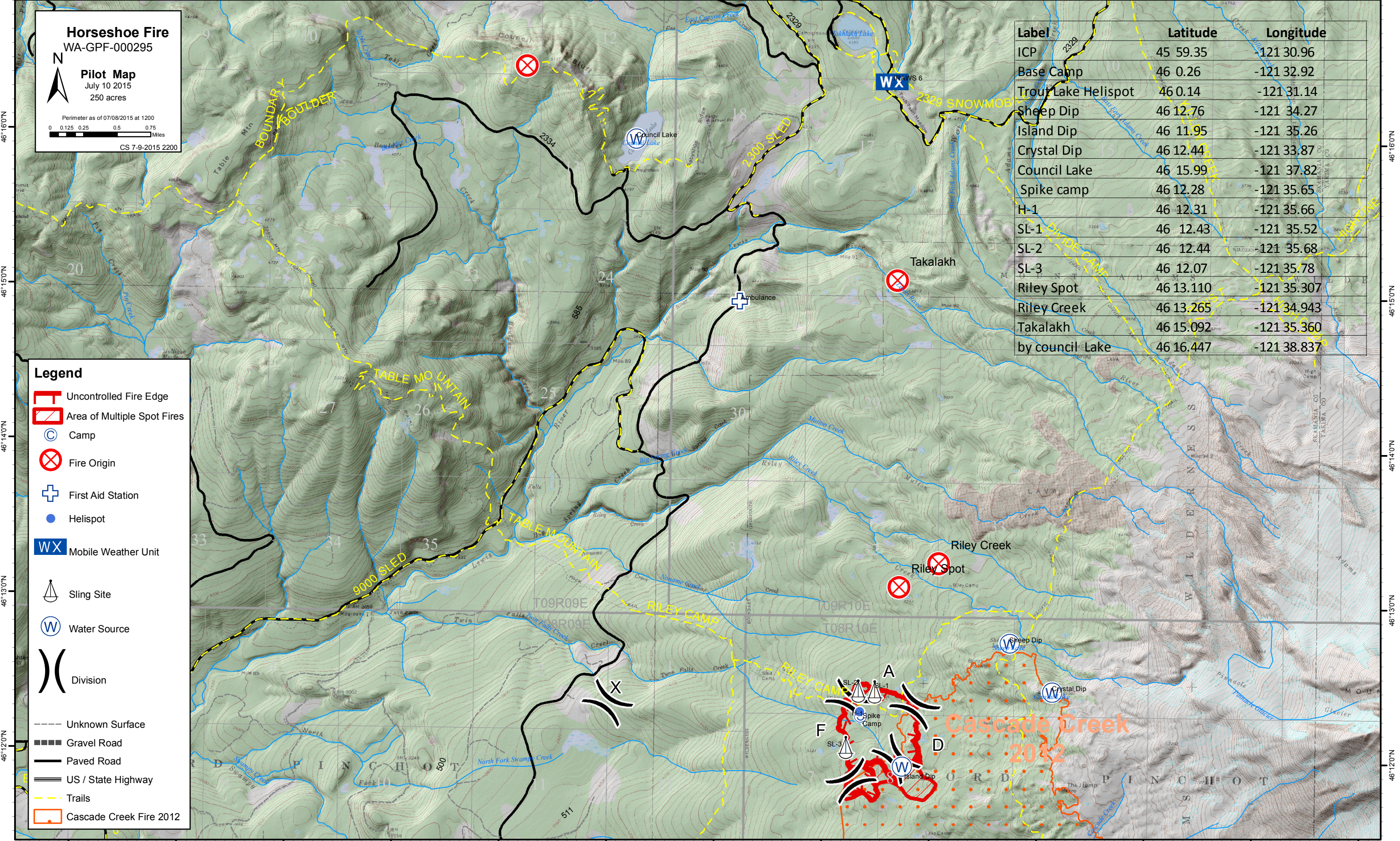
Perimeter as of 07/08/2015 at 1200

CS 7-9-2015 2200

Label	Latitude	Longitude
ICP	45 59.35	-121 30.96
Base Camp	46 0.26	-121 32.92
Trout Lake Helispot	46 0.14	-121 31.14
Sheep Dip	46 12.76	-121 34.27
Island Dip	46 11.95	-121 35.26
Crystal Dip	46 12.44	-121 33.87
Council Lake	46 15.99	-121 37.82
Spike camp	46 12.28	-121 35.65
H-1	46 12.31	-121 35.66
SL-1	46 12.43	-121 35.52
SL-2	46 12.44	-121 35.68
SL-3	46 12.07	-121 35.78
Riley Spot	46 13.110	-121 35.307
Riley Creek	46 13.265	-121 34.943
Takalakh	46 15.092	-121 35.360
by council Lake	46 16.447	-121 38.837

Legend

- Uncontrolled Fire Edge
- Area of Multiple Spot Fires
- Camp
- Fire Origin
- First Aid Station
- Helispot
- Mobile Weather Unit
- Sling Site
- Water Source
- Division
- Unknown Surface
- Gravel Road
- Paved Road
- US / State Highway
- Trails
- Cascade Creek Fire 2012



121°43'0"W 121°42'0"W 121°41'0"W 121°40'0"W 121°39'0"W 121°38'0"W 121°37'0"W 121°36'0"W 121°35'0"W 121°34'0"W 121°33'0"W 121°32'0"W 121°31'0"W