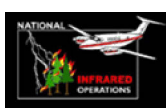


121°36'0"W

121°35'30"W

121°35'0"W

121°34'30"W



### Horseshoe Incident WA-GPF-000295 Infrared Map



Imagery Date: July 5th, 2015 @ 2314 hrs  
Interpreted Acres: 151 acres  
IRIN: Max Wahlberg

46°13'0"N

46°13'0"N

46°12'30"N

46°12'30"N

46°12'0"N

46°12'0"N

46°11'30"N

46°11'30"N

121°36'30"W

121°36'0"W

121°35'30"W

121°35'0"W

121°34'30"W

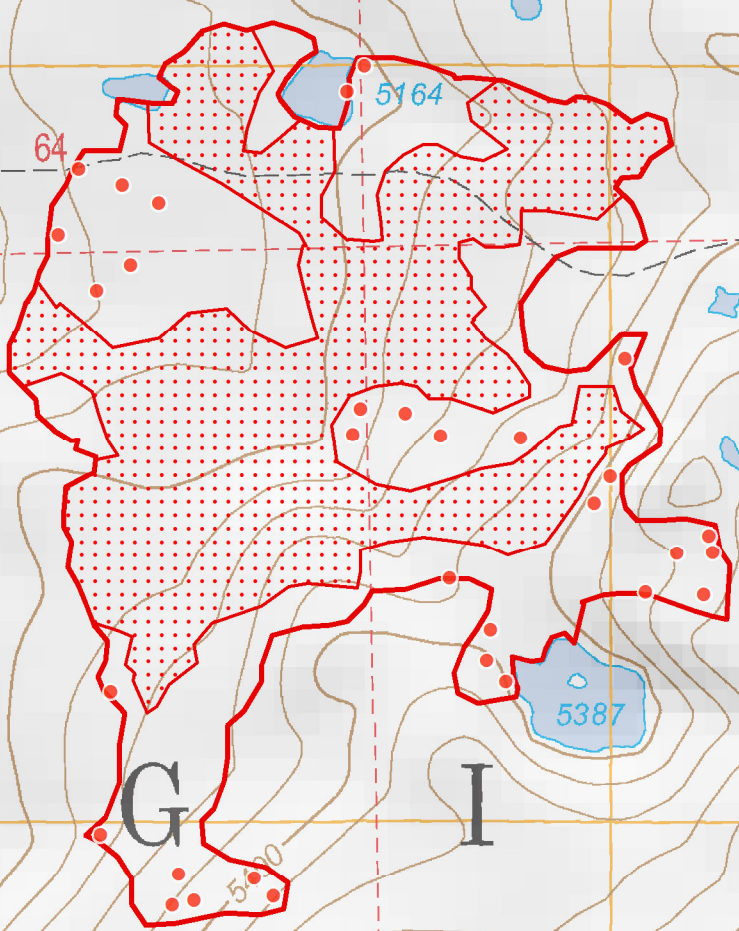
SECOND

STANDARD

6

5

Burnt Rock



121 34 59.51 W 46 11 54.25 N

121 35 36.67 W 46 11 40.72 N

121 35 3.16 W 46 11 42.16 N

Lake Camp

Mile 44

TRAIL

0.35 0.175 0 0.35 Miles

### Legend

- Isolated Heat
- Intense Heat
- Scattered Heat
- Heat Perimeter