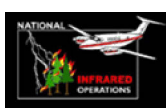


121°36'0"W

121°35'30"W

121°35'0"W

121°34'30"W



Horseshoe Incident WA-GPF-000295 Infrared Map



Imagery Date: July 5th, 2015 @ 2314 hrs
Interpreted Acres: 151 acres
IRIN: Max Wahlberg

46°13'0"N

46°13'0"N

46°12'30"N

46°12'30"N

46°12'0"N

46°12'0"N

46°11'30"N

46°11'30"N

121°36'30"W

121°36'0"W

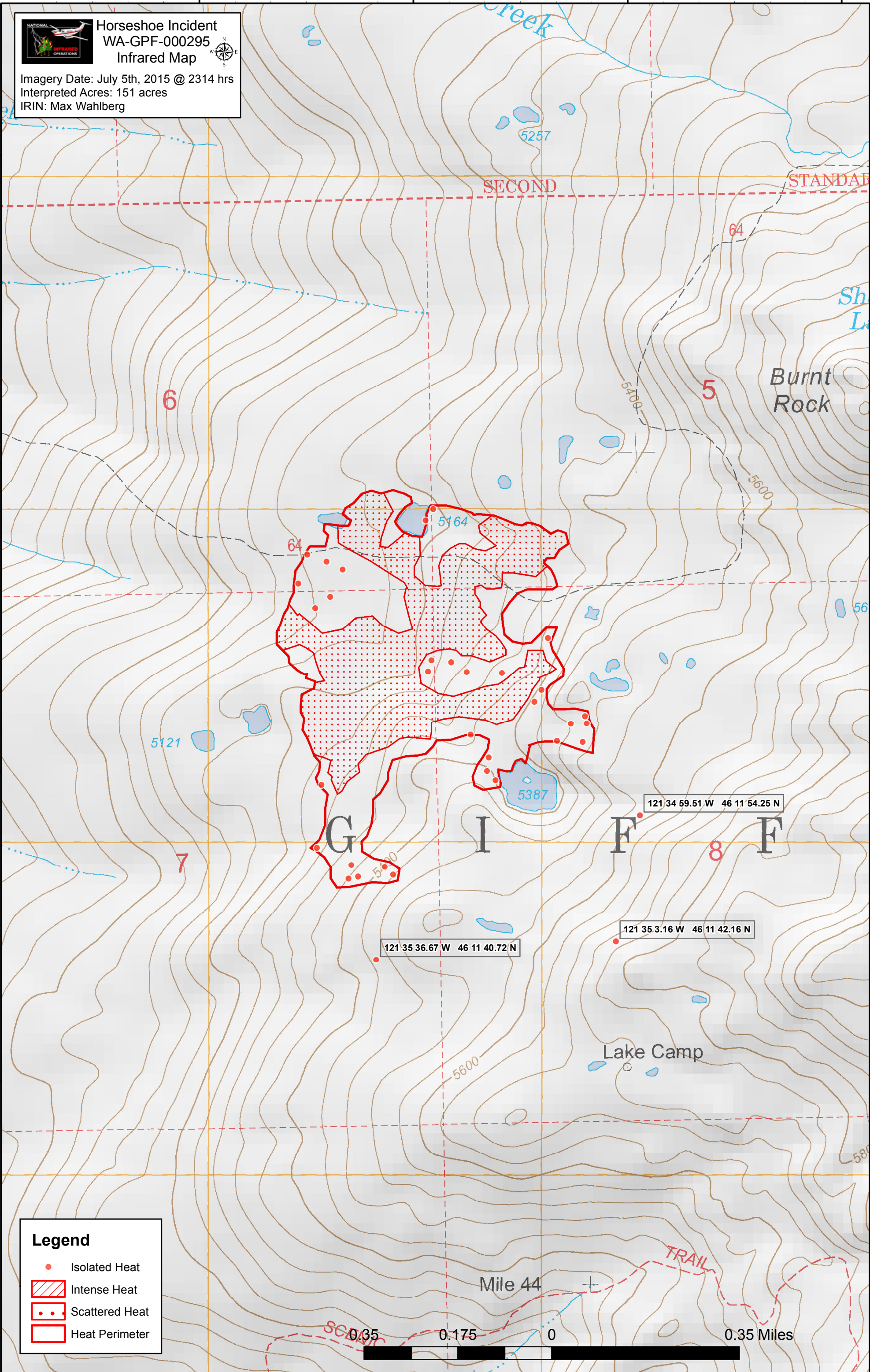
121°35'30"W

121°35'0"W

121°34'30"W

Horseshoe Incident
WA-GPF-000295
Infrared Map

Imagery Date: July 5th, 2015 @ 2314 hrs
 Interpreted Acres: 151 acres
 IRIN: Max Wahlberg



Legend

- Isolated Heat
- Intense Heat
- Scattered Heat
- Heat Perimeter

