

117°13'0"W

117°12'0"W

117°11'0"W

48°50'0"N

48°49'0"N

48°48'0"N

48°47'0"N

48°49'0"N

48°48'0"N

48°47'0"N

48°46'0"N

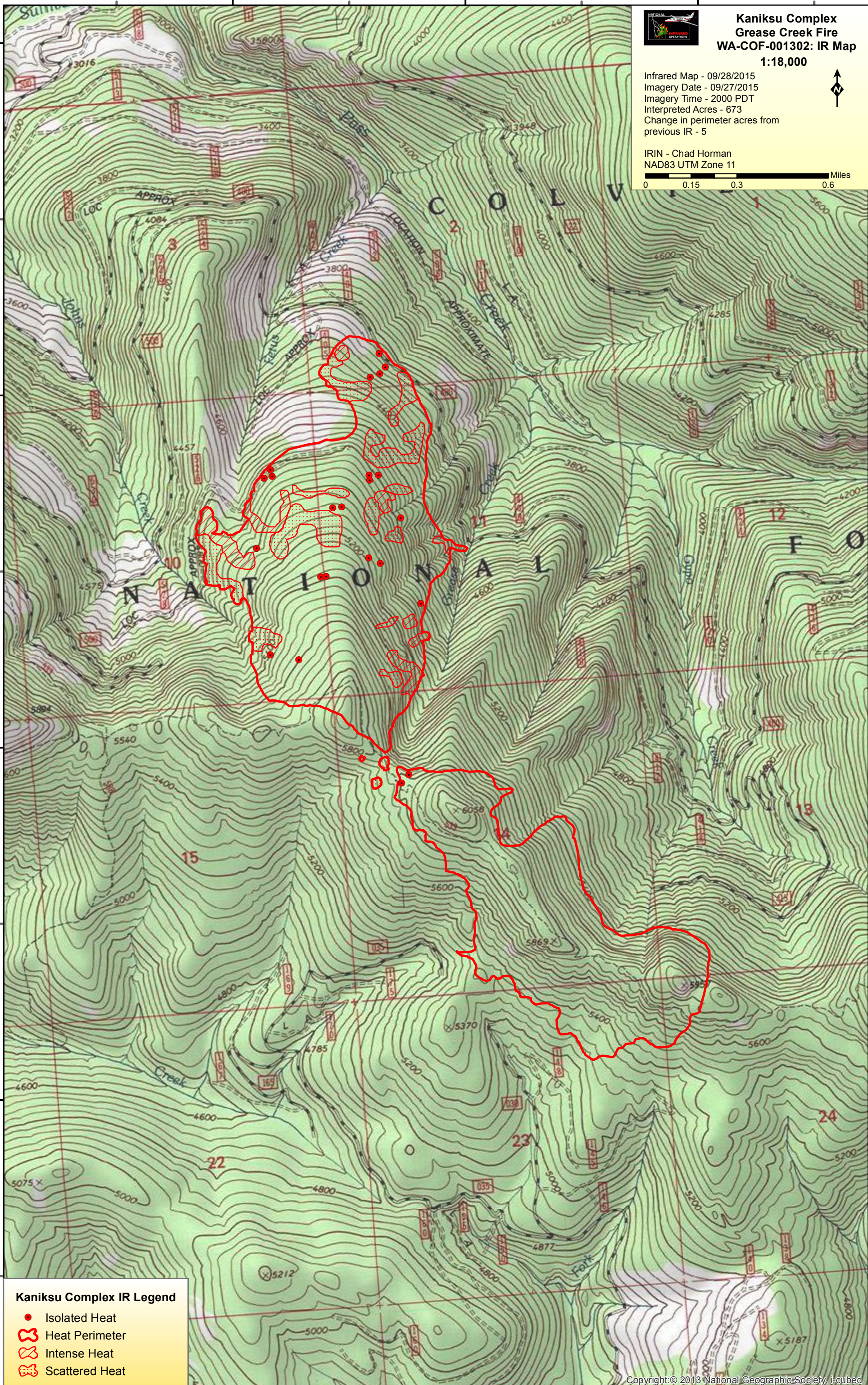
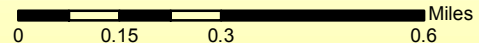


Kaniksu Complex Grease Creek Fire WA-COF-001302: IR Map 1:18,000

Infrared Map - 09/28/2015
Imagery Date - 09/27/2015
Imagery Time - 2000 PDT
Interpreted Acres - 673
Change in perimeter acres from
previous IR - 5



IRIN - Chad Horman
NAD83 UTM Zone 11



Kaniksu Complex IR Legend

- Isolated Heat
- Heat Perimeter
- Intense Heat
- Scattered Heat

117°14'0"W

117°13'0"W

117°12'0"W

117°11'0"W