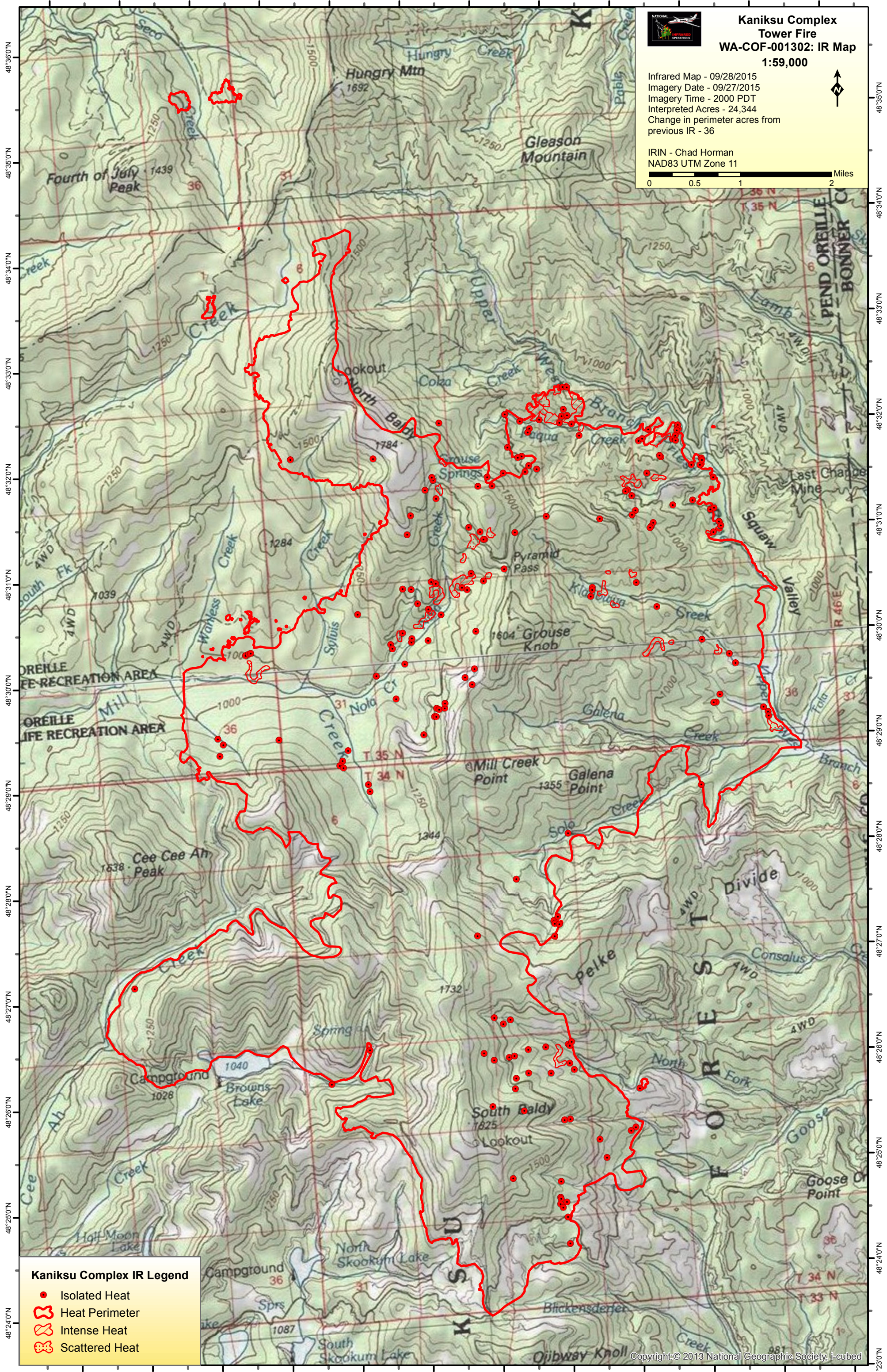


117°13'0"W 117°12'0"W 117°11'0"W 117°10'0"W 117°9'0"W 117°8'0"W 117°7'0"W 117°6'0"W 117°5'0"W 117°4'0"W 117°3'0"W 117°2'0"W

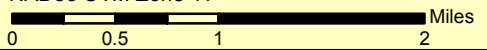


Kaniksu Complex Tower Fire WA-COF-001302: IR Map 1:59,000

Infrared Map - 09/28/2015
Imagery Date - 09/27/2015
Imagery Time - 2000 PDT
Interpreted Acres - 24,344
Change in perimeter acres from
previous IR - 36



IRIN - Chad Horman
NAD83 UTM Zone 11



Kaniksu Complex IR Legend

- Isolated Heat
- Heat Perimeter
- Intense Heat
- Scattered Heat

117°14'0"W 117°13'0"W 117°12'0"W 117°11'0"W 117°10'0"W 117°9'0"W 117°8'0"W 117°7'0"W 117°6'0"W 117°5'0"W 117°4'0"W 117°3'0"W