

117°13'0"W

117°12'0"W

48°56'0"N

48°56'0"N



Kaniksu Complex South Fork Slate Creek Fire WA-COF-001302: IR Map

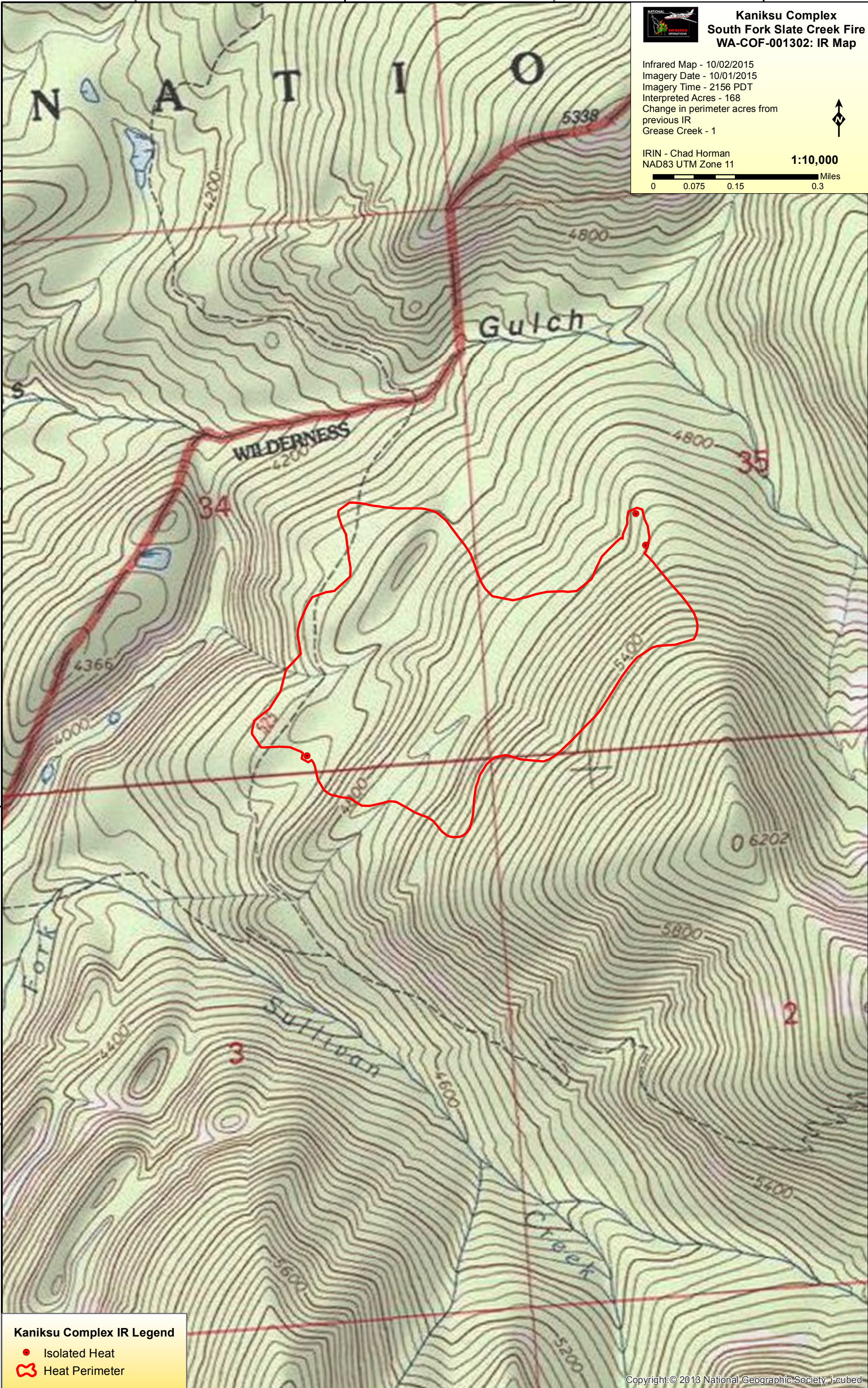
Infrared Map - 10/02/2015
Imagery Date - 10/01/2015
Imagery Time - 2156 PDT
Interpreted Acres - 168
Change in perimeter acres from
previous IR
Grease Creek - 1



IRIN - Chad Horman
NAD83 UTM Zone 11

1:10,000

0 0.075 0.15 0.3 Miles



Kaniksu Complex IR Legend

- Isolated Heat
- Heat Perimeter

117°14'0"W

117°13'0"W

48°54'0"N