

117°13'0"W 117°12'0"W 117°11'0"W 117°10'0"W 117°9'0"W 117°8'0"W 117°7'0"W 117°6'0"W 117°5'0"W 117°4'0"W 117°3'0"W 117°2'0"W 117°1'0"W



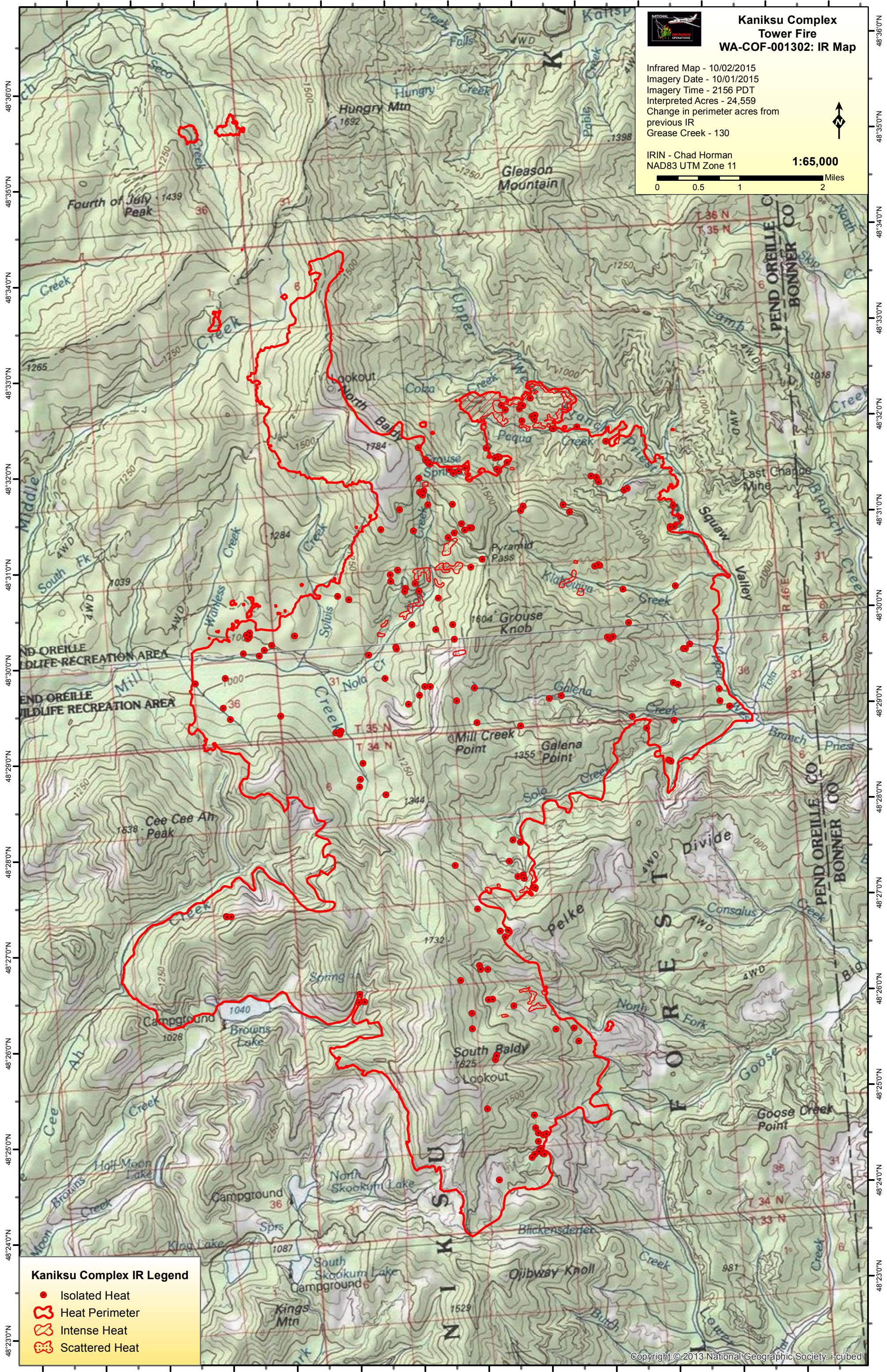
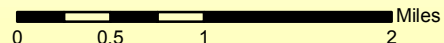
Kaniksu Complex Tower Fire WA-COF-001302: IR Map

Infrared Map - 10/02/2015
Imagery Date - 10/01/2015
Imagery Time - 2156 PDT
Interpreted Acres - 24,559
Change in perimeter acres from
previous IR
Grease Creek - 130



IRIN - Chad Horman
NAD83 UTM Zone 11

1:65,000



Kaniksu Complex IR Legend

- Isolated Heat
- ⬮ Heat Perimeter
- ⬮ Intense Heat
- ⬮ Scattered Heat

117°15'0"W 117°14'0"W 117°13'0"W 117°12'0"W 117°11'0"W 117°10'0"W 117°9'0"W 117°8'0"W 117°7'0"W 117°6'0"W 117°5'0"W 117°4'0"W 117°3'0"W