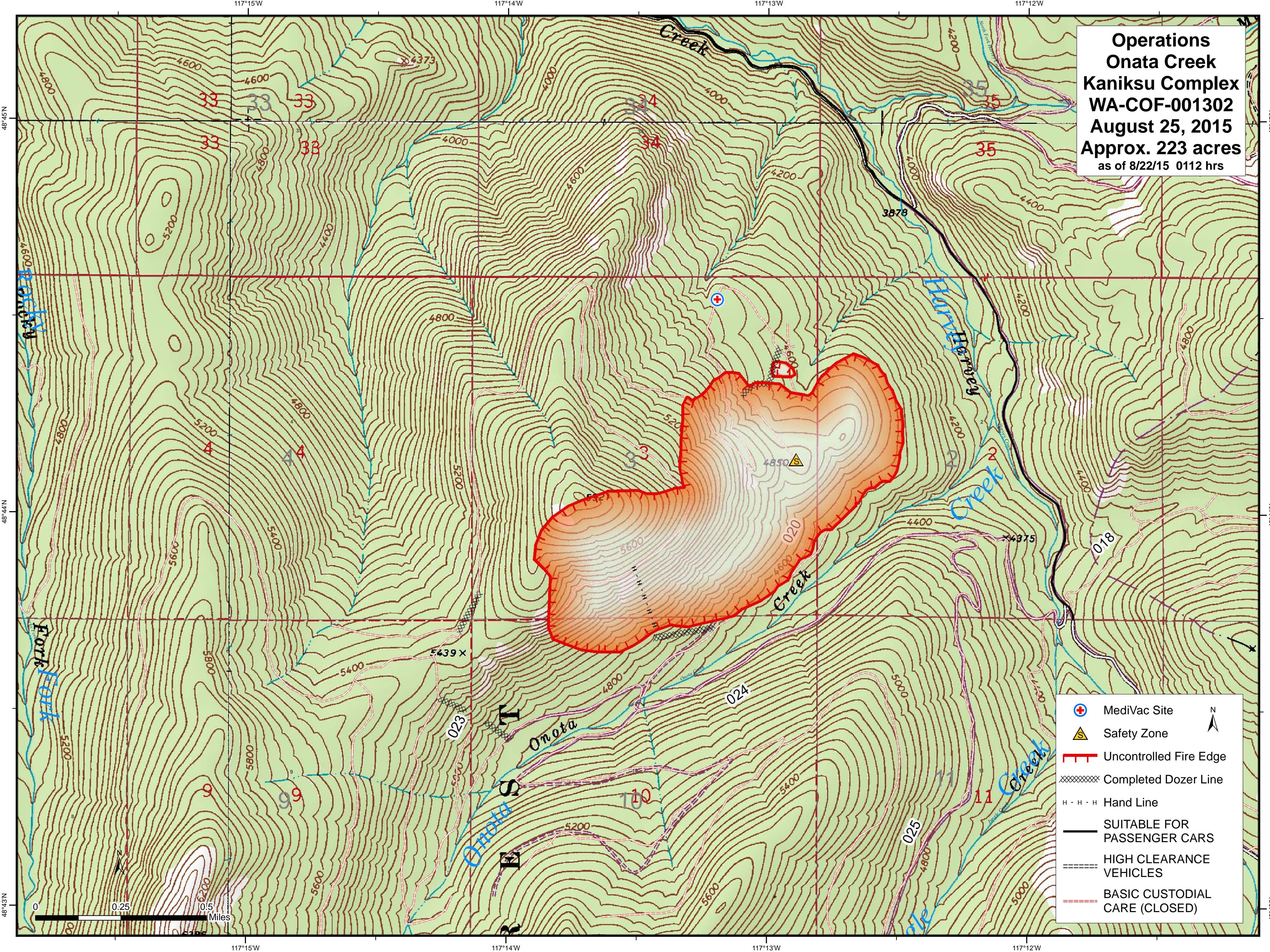




**Operations
Onata Creek
Kaniksu Complex
WA-COF-001302
August 25, 2015
Approx. 223 acres
as of 8/22/15 0112 hrs**



-  MediVac Site
-  Safety Zone
-  Uncontrolled Fire Edge
-  Completed Dozer Line
-  Hand Line
-  SUITABLE FOR PASSENGER CARS
-  HIGH CLEARANCE VEHICLES
-  BASIC CUSTODIAL CARE (CLOSED)