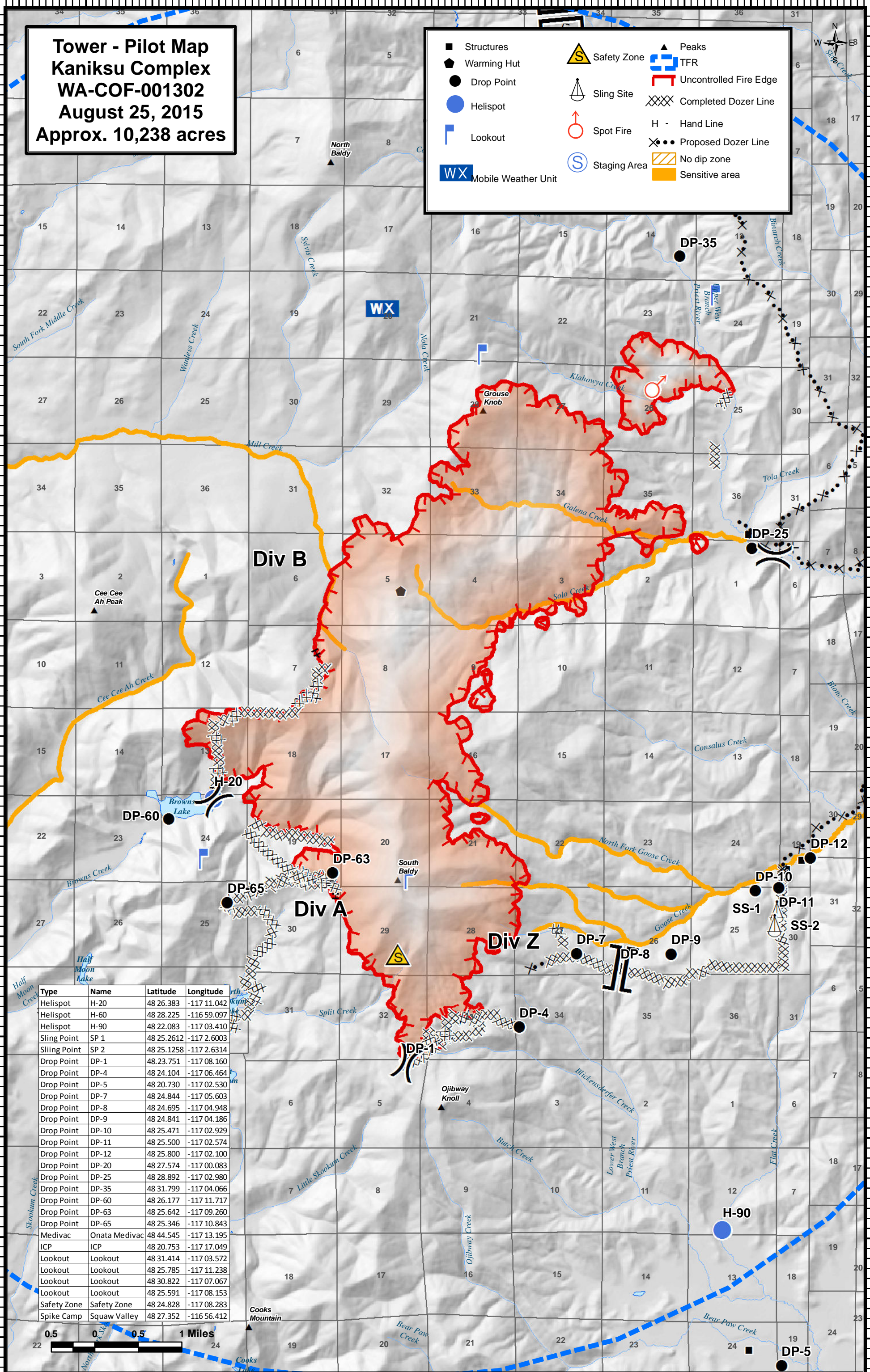


117°14'W 117°13'W 117°12'W 117°11'W 117°10'W 117°9'W 117°8'W 117°7'W 117°6'W 117°5'W 117°4'W 117°3'W 117°2'W

Tower - Pilot Map
Kaniksu Complex
WA-COF-001302
August 25, 2015
Approx. 10,238 acres

■ Structures	▲ Peaks
⬠ Warming Hut	⚡ TFR
● Drop Point	⚠ Uncontrolled Fire Edge
● Helispot	⊗ Completed Dozer Line
⚑ Lookout	H - Hand Line
WX Mobile Weather Unit	⊗ Proposed Dozer Line
	⊗ No dip zone
	■ Sensitive area
⚠ Safety Zone	⚡ Sling Site
⚠ Spot Fire	⊗ Staging Area



Type	Name	Latitude	Longitude
Helispot	H-20	48 26.383	-117 11.042
Helispot	H-60	48 28.225	-116 59.097
Helispot	H-90	48 22.083	-117 03.410
Sling Point	SP 1	48 25.2612	-117 2.6003
Sling Point	SP 2	48 25.1258	-117 2.6314
Drop Point	DP-1	48.23.751	-117 08.160
Drop Point	DP-4	48 24.104	-117 06.464
Drop Point	DP-5	48 20.730	-117 02.530
Drop Point	DP-7	48 24.844	-117 05.603
Drop Point	DP-8	48 24.695	-117 04.948
Drop Point	DP-9	48 24.841	-117 04.186
Drop Point	DP-10	48 25.471	-117 02.929
Drop Point	DP-11	48 25.500	-117 02.574
Drop Point	DP-12	48 25.800	-117 02.100
Drop Point	DP-20	48 27.574	-117 00.083
Drop Point	DP-25	48 28.892	-117 02.980
Drop Point	DP-35	48 31.799	-117 04.066
Drop Point	DP-60	48 26.177	-117 11.717
Drop Point	DP-63	48 25.642	-117 09.260
Drop Point	DP-65	48 25.346	-117 10.843
Medivac	Onata Medivac	48 44.545	-117 13.195
ICP	ICP	48 20.753	-117 17.049
Lookout	Lookout	48 31.414	-117 03.572
Lookout	Lookout	48 25.785	-117 11.238
Lookout	Lookout	48 30.822	-117 07.067
Lookout	Lookout	48 25.591	-117 08.153
Safety Zone	Safety Zone	48 24.828	-117 08.283
Spike Camp	Squaw Valley	48 27.352	-116 56.412

117°14'W 117°13'W 117°12'W 117°11'W 117°10'W 117°9'W 117°8'W 117°7'W 117°6'W 117°5'W 117°4'W 117°3'W 117°2'W