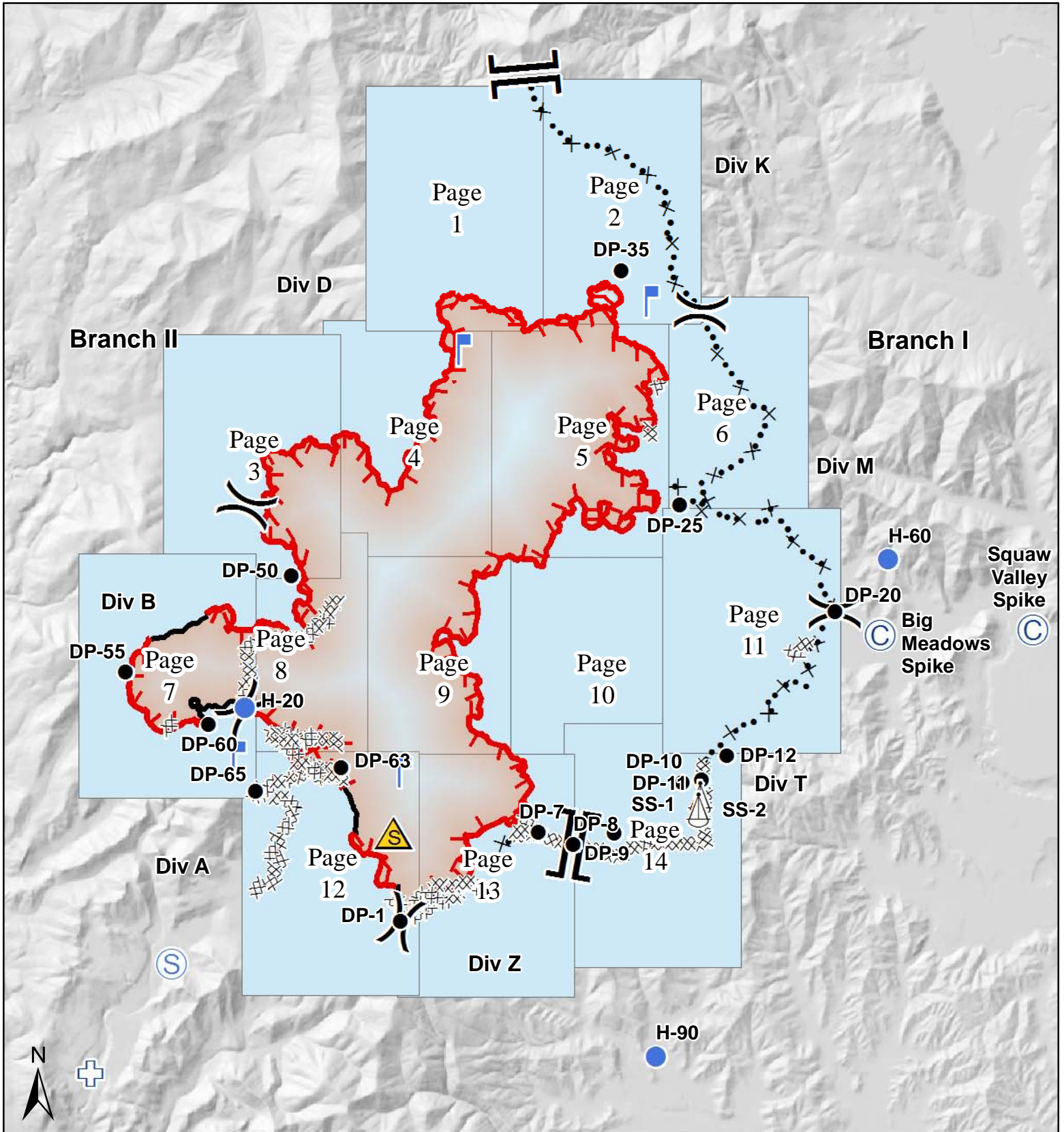


Kaniksu Complex
WA-COF-001302
Tower - IAP Maps
August 28, 2015
Approx. 16,335 acres
as of 8/26/15 2134 hrs

	Structures		Safety Zone		Uncontrolled Fire Edge
	Warming Hut		Spot Fire		Completed Dozer Line
	Sling Site		Staging Area		Proposed Dozer Line
	Camp		First Aid Station		Open Roads
	Drop Point		Lookout		Closed Roads

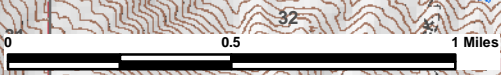


117°9'W

117°8'W

117°7'W

117°6'W



Page # 1

48°34'N

48°34'N

48°33'N

48°33'N

48°32'N

48°32'N

48°31'N

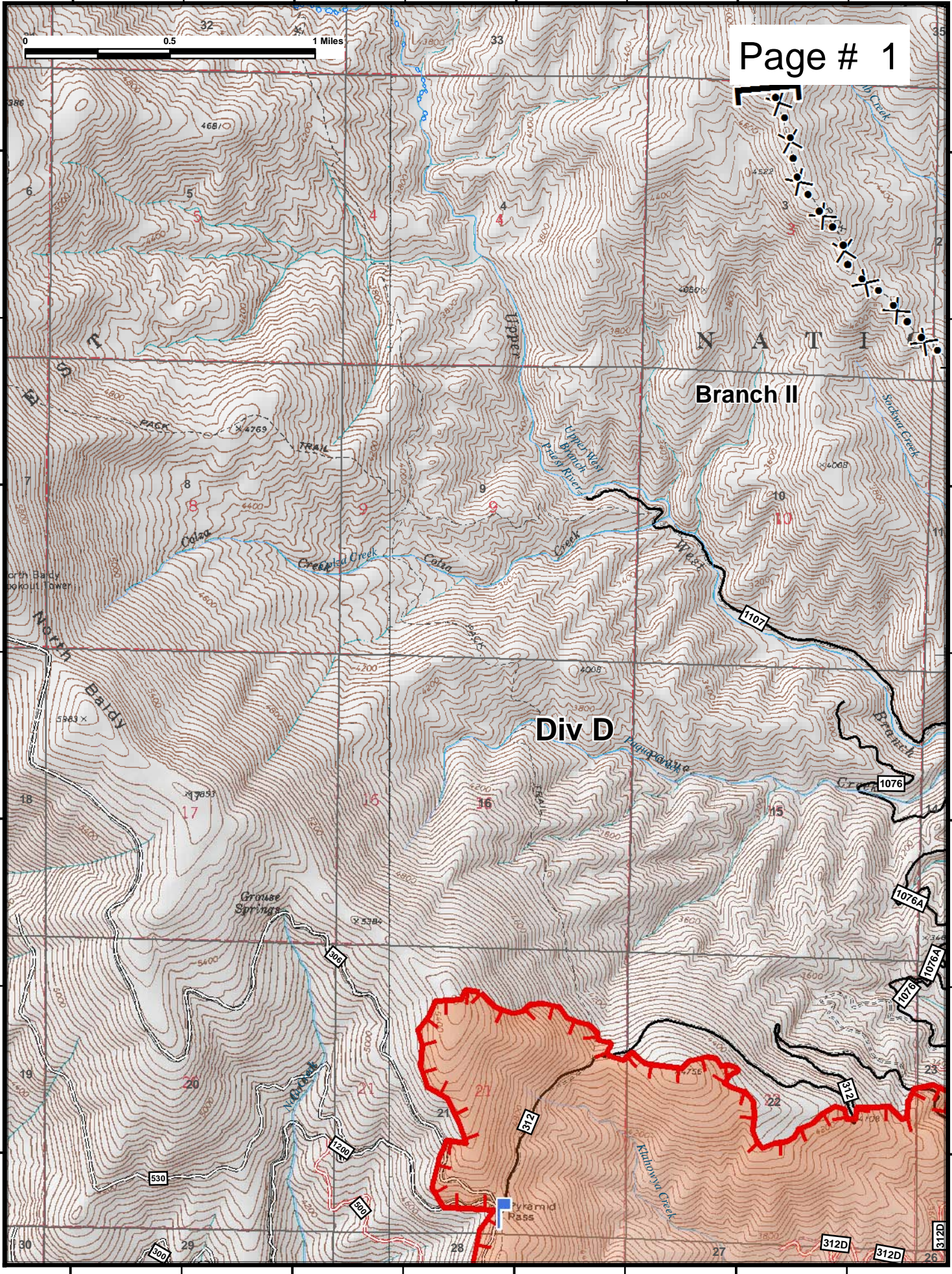
48°31'N

117°9'W

117°8'W

117°7'W

117°6'W

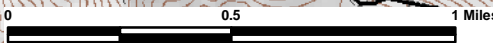


117°6'W

117°5'W

117°4'W

117°3'W



Page # 2

48°34'N

48°34'N

48°33'N

48°33'N

48°32'N

48°32'N

48°31'N

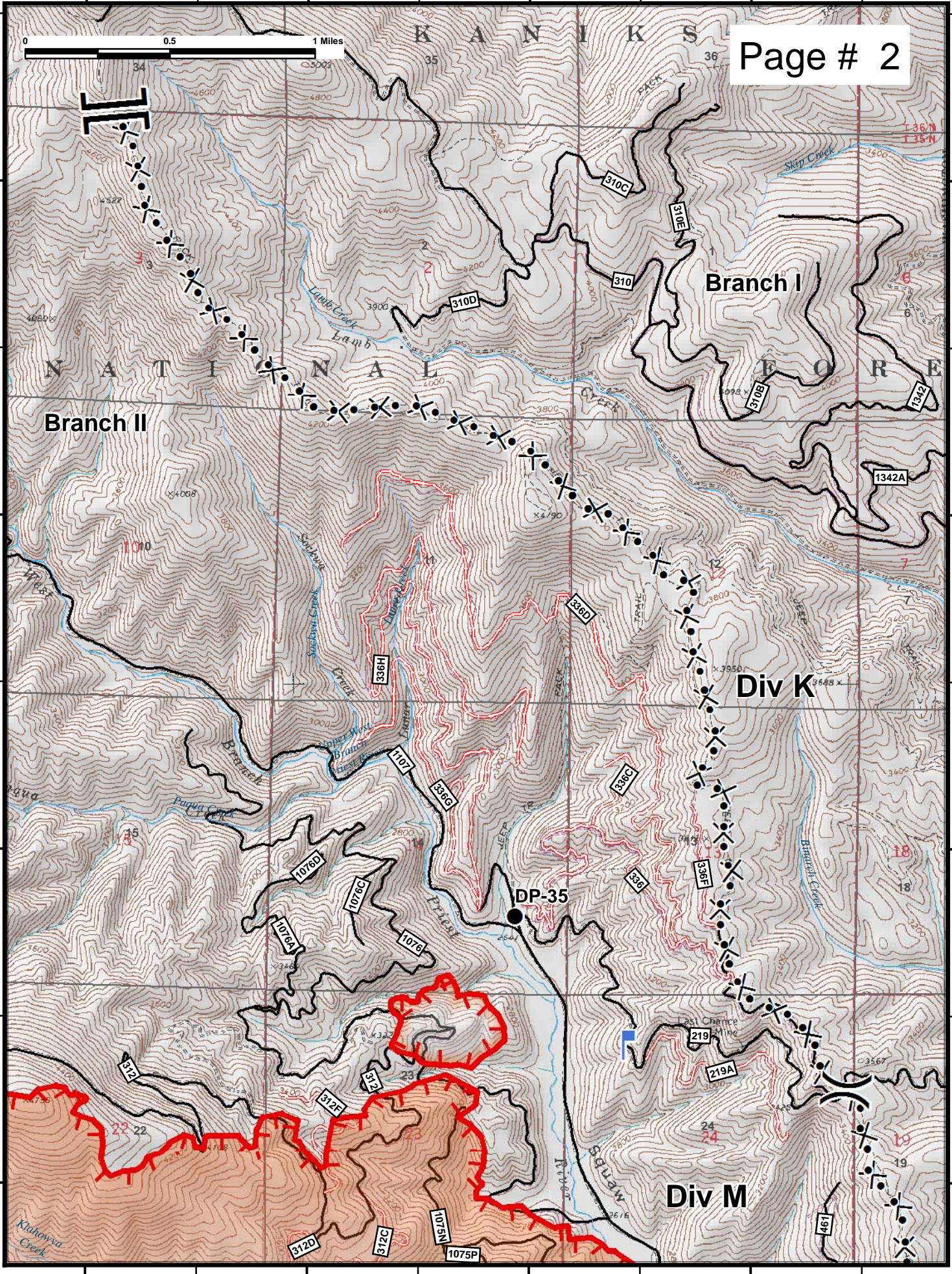
48°31'N

117°6'W

117°5'W

117°4'W

117°3'W



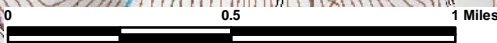
117°10'W

117°9'W

117°8'W

117°7'W

117°6'W



Page # 4

48°31'N

48°31'N

48°30'N

48°30'N

48°29'N

48°29'N

48°28'N

48°28'N

117°10'W

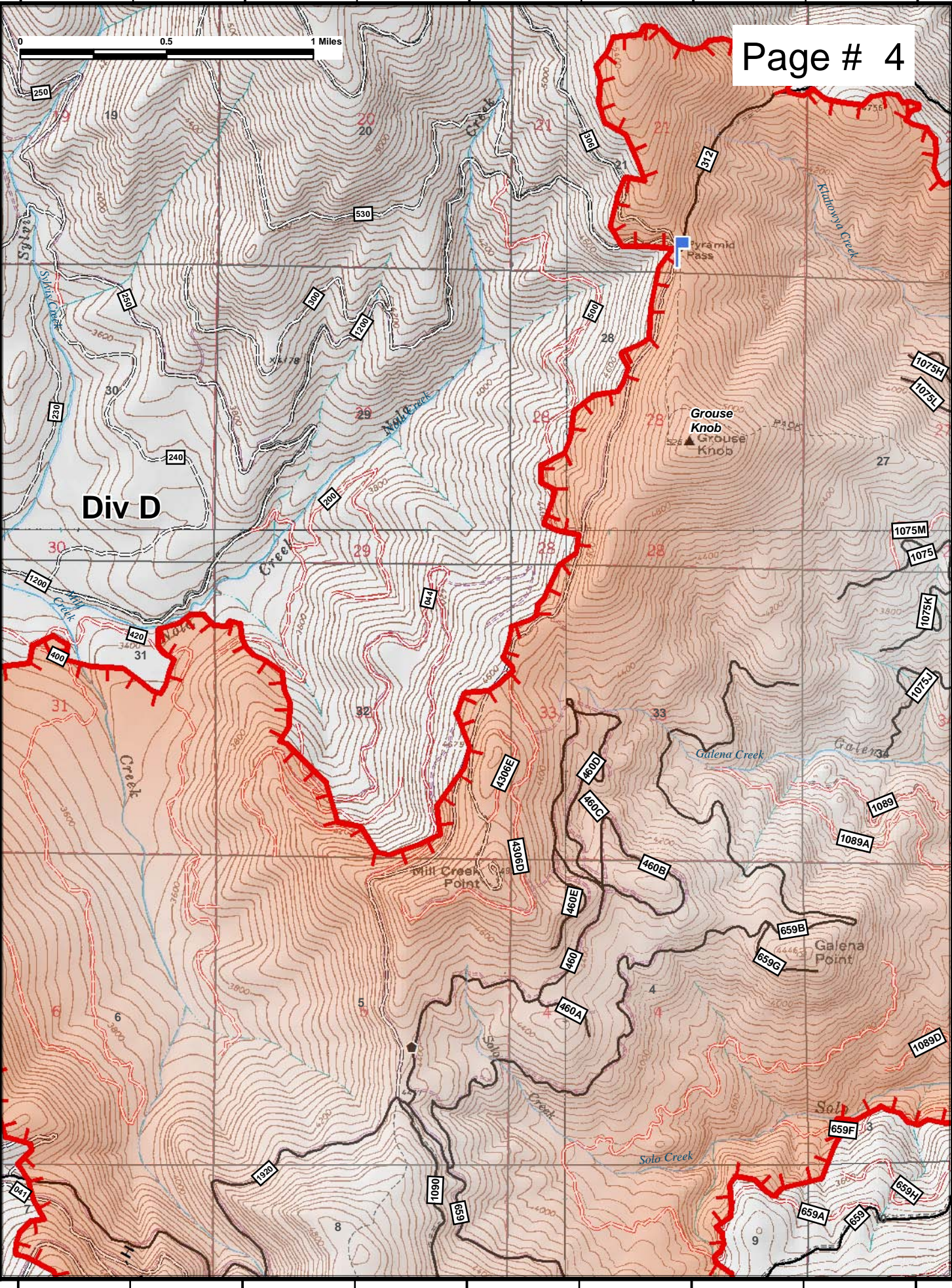
117°9'W

117°8'W

117°7'W

117°6'W

Div D



117°4'W

117°3'W

117°2'W

117°1'W

Page # 6

48°31'N

48°31'N

48°30'N

48°30'N

48°29'N

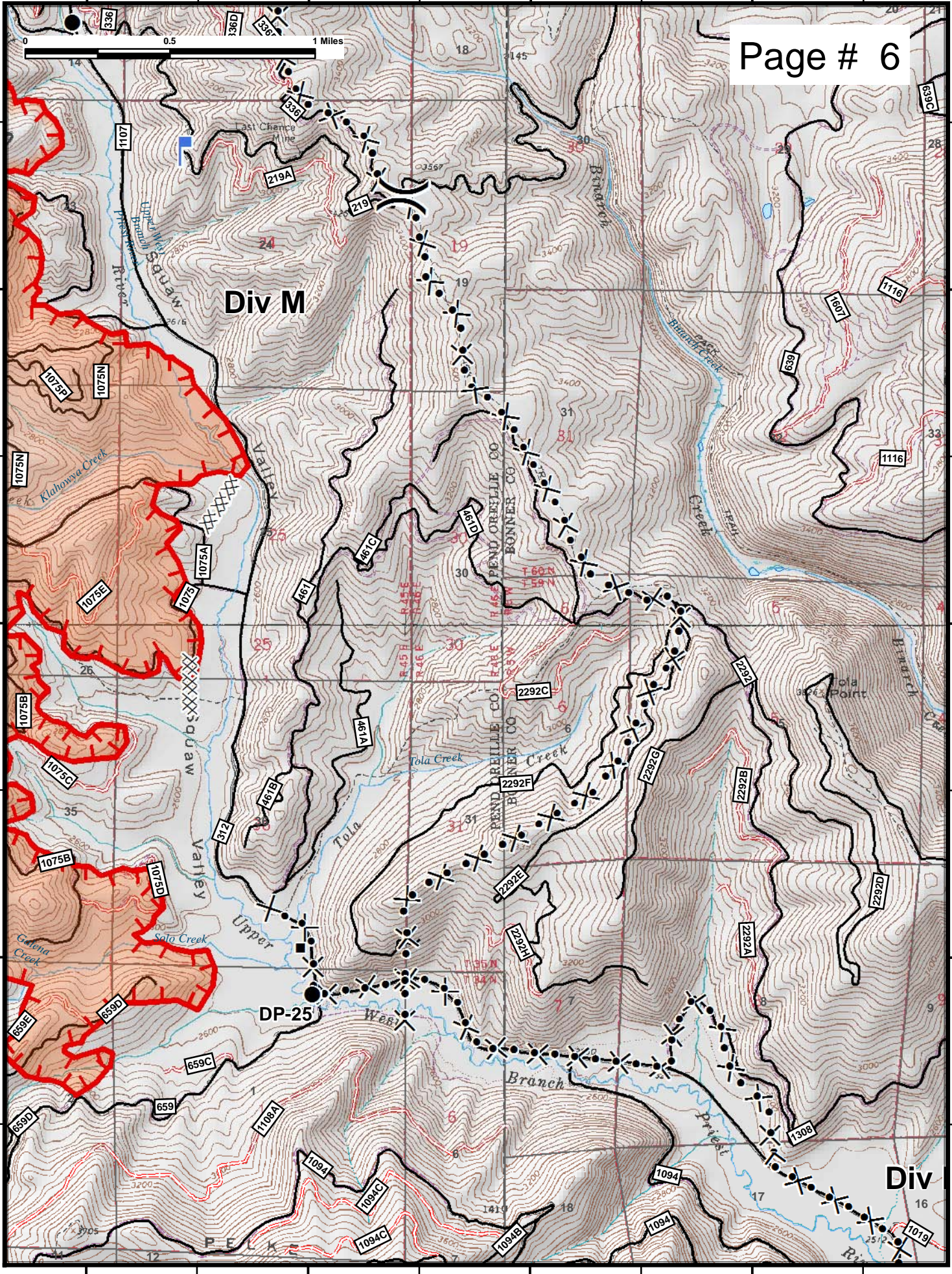
48°29'N

117°4'W

117°3'W

117°2'W

117°1'W



117°14'W

117°13'W

117°12'W

117°11'W

Page # 7

Div B

Div A

48°28'N

48°28'N

48°27'N

48°27'N

48°26'N

48°26'N

48°25'N

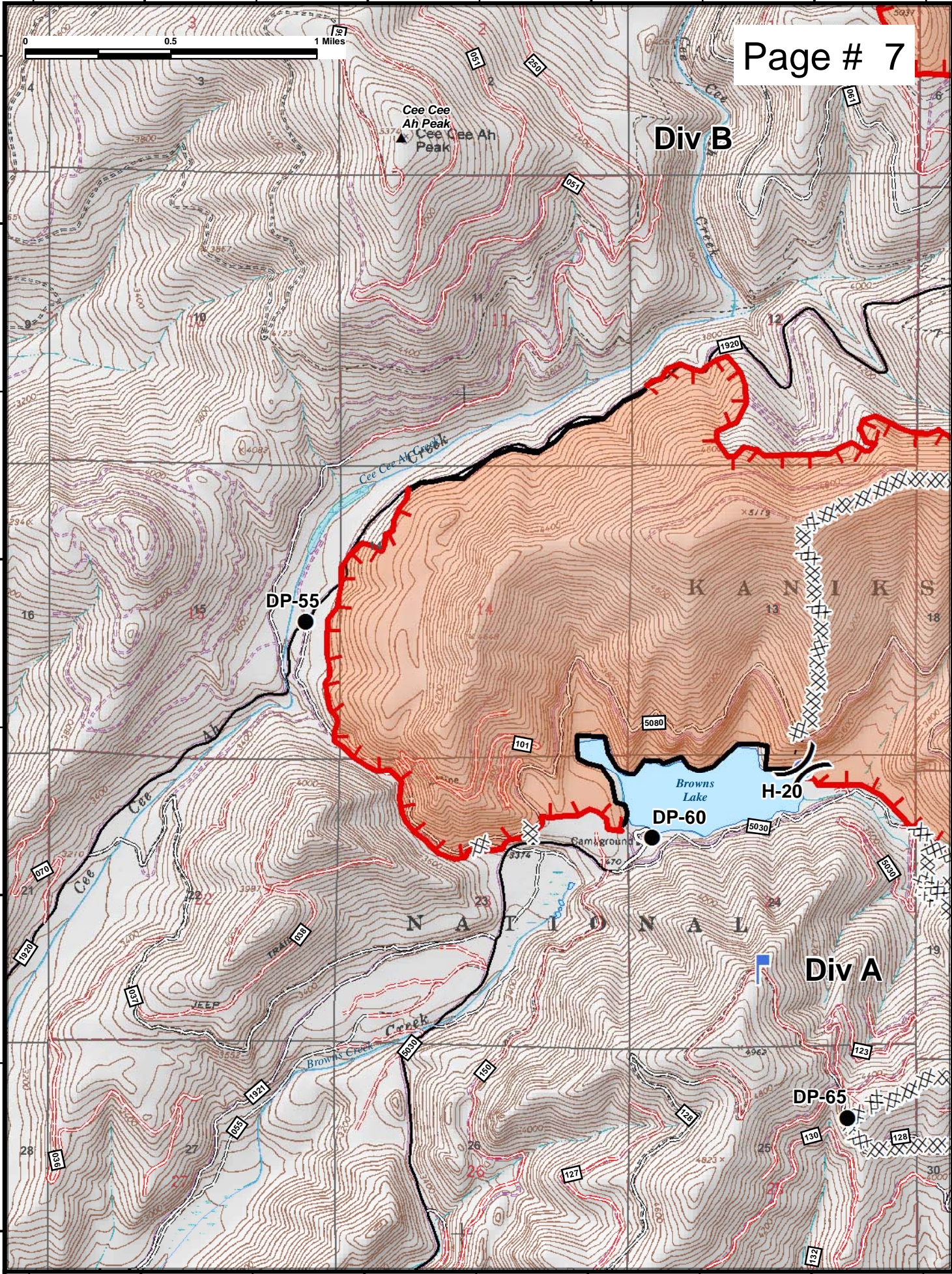
48°25'N

117°14'W

117°13'W

117°12'W

117°11'W

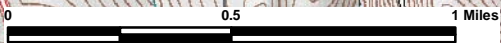


117°12'W

117°11'W

117°10'W

117°9'W



48°28'N

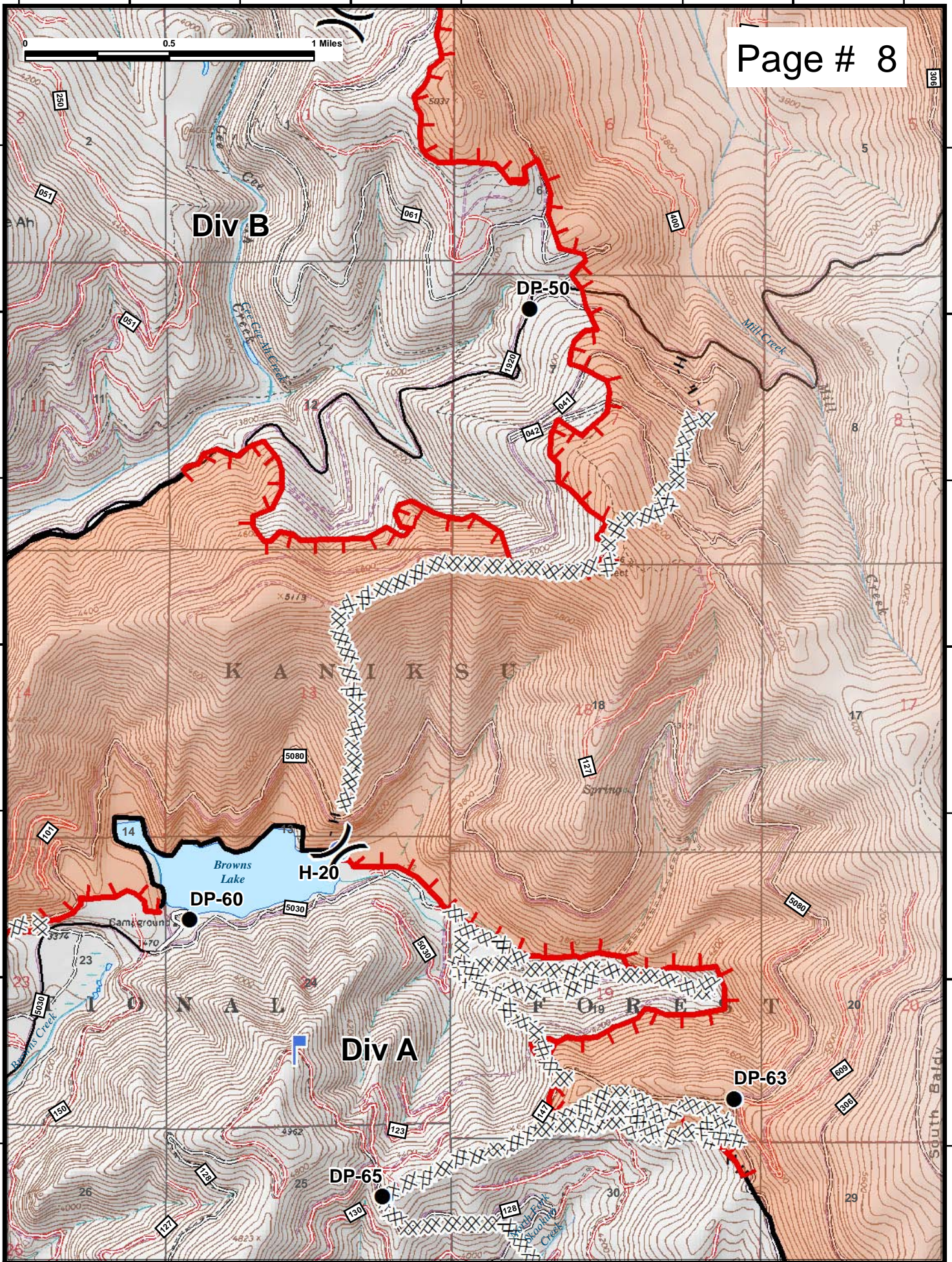
48°28'N

48°27'N

48°27'N

48°26'N

48°26'N



117°12'W

117°11'W

117°10'W

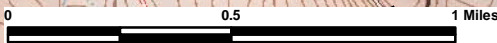
117°9'W

117°9'W

117°8'W

117°7'W

117°6'W



Page # 9

48°28'N

48°28'N

48°27'N

48°27'N

48°26'N

48°26'N

48°25'N

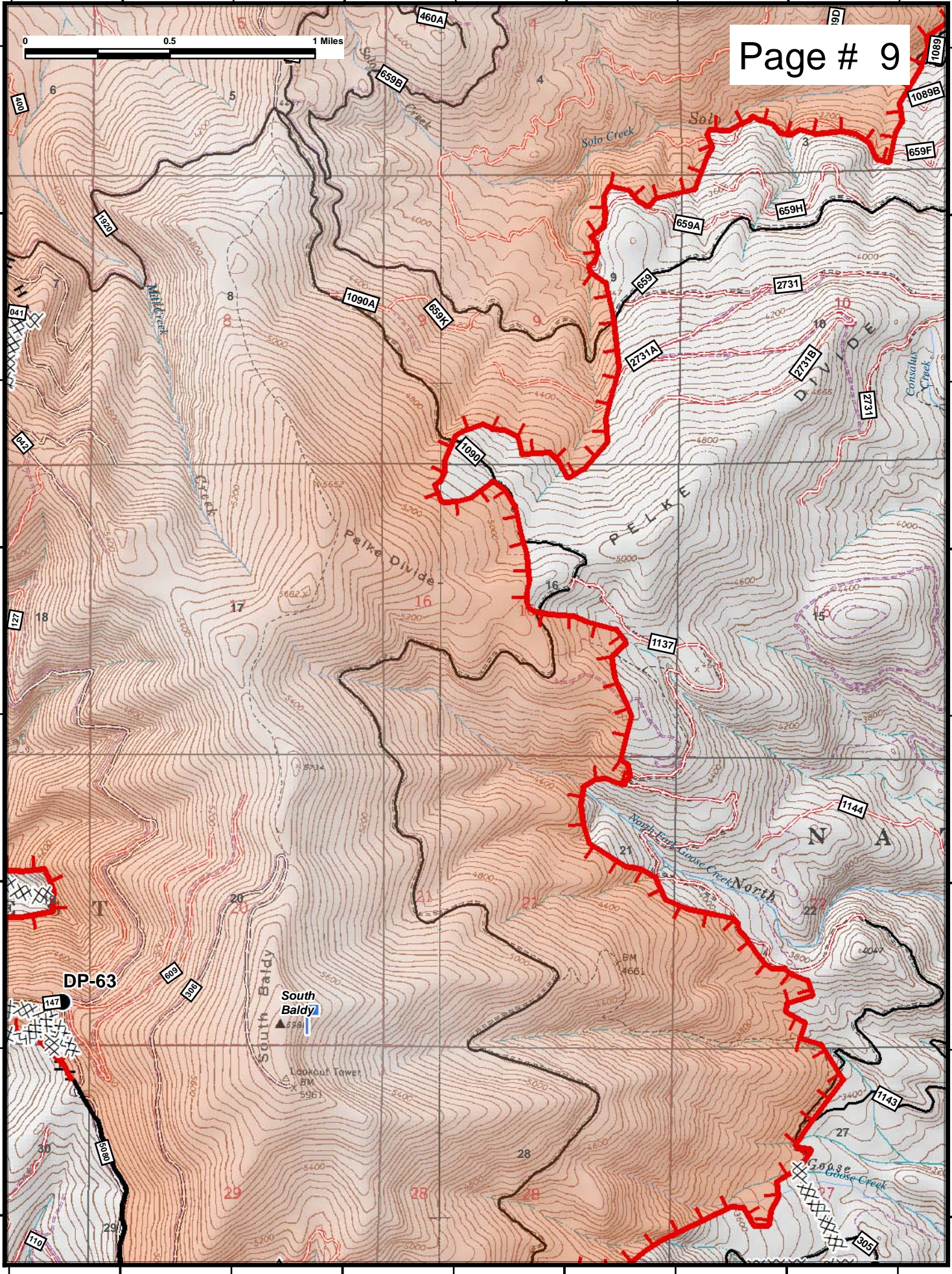
48°25'N

117°9'W

117°8'W

117°7'W

117°6'W

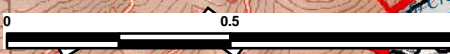


117°6'W

117°5'W

117°4'W

117°3'W



48°28'N

48°28'N

48°27'N

48°27'N

48°26'N

48°26'N

48°25'N

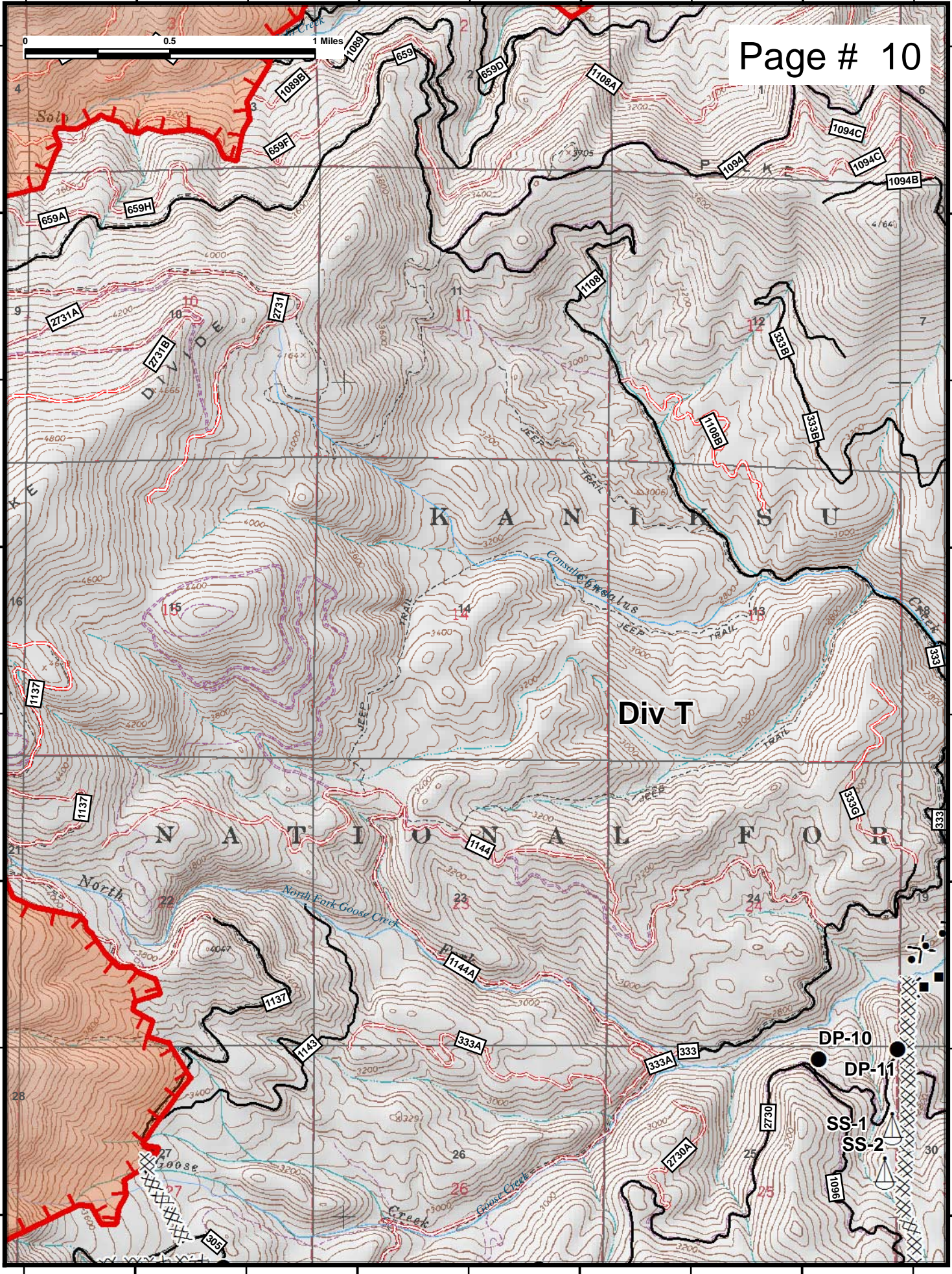
48°25'N

117°6'W

117°5'W

117°4'W

117°3'W



Div T

DP-10

DP-11

SS-1

SS-2

117°3'W

117°2'W

117°1'W

117°0'W

48°29'N

48°29'N

Page # 11

48°28'N

48°28'N

48°27'N

48°27'N

48°26'N

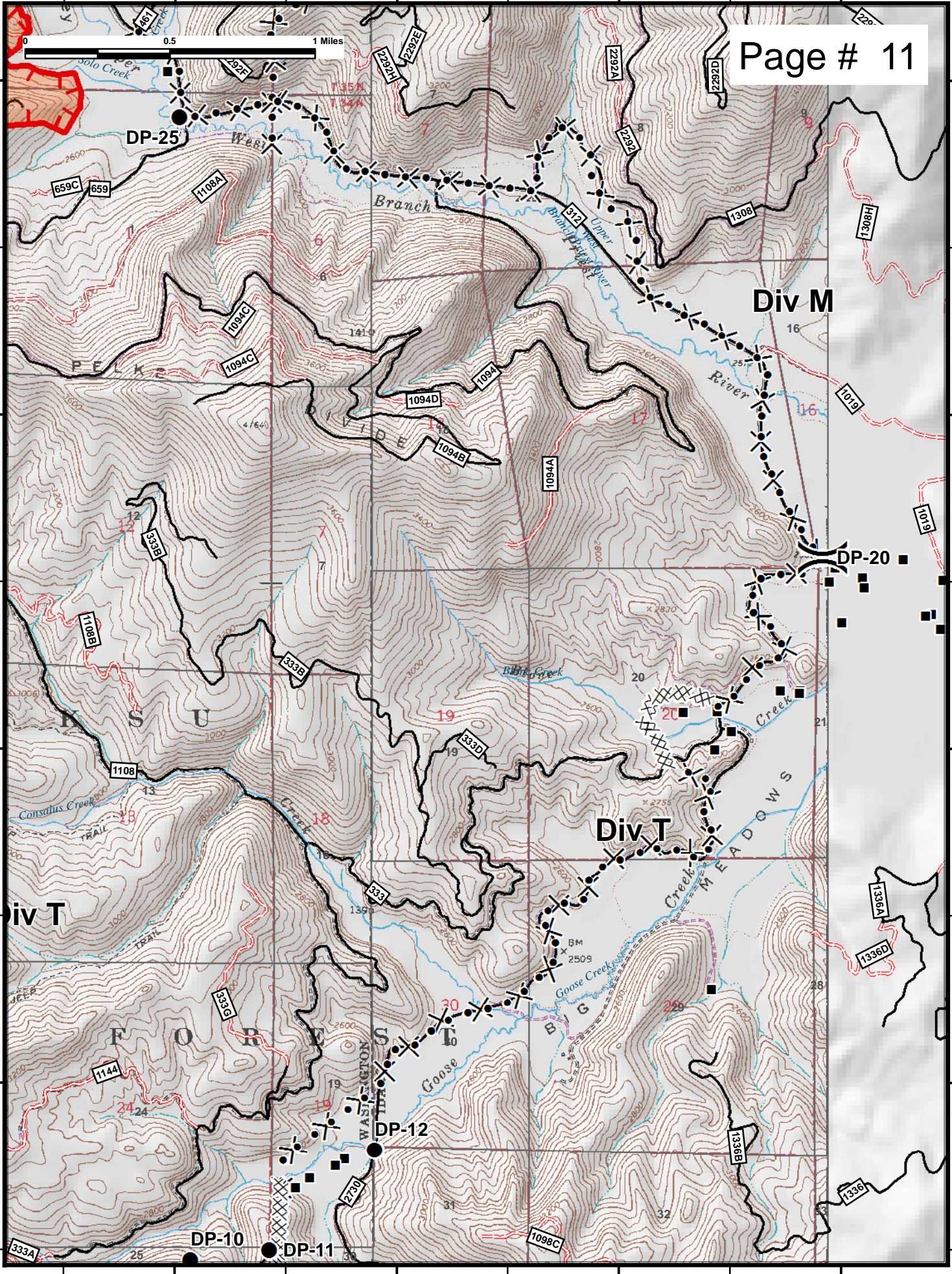
48°26'N

117°3'W

117°2'W

117°1'W

117°0'W



117°11'W

117°10'W

117°9'W

117°8'W

48°26'N

48°26'N

48°25'N

48°25'N

48°24'N

48°24'N

48°23'N

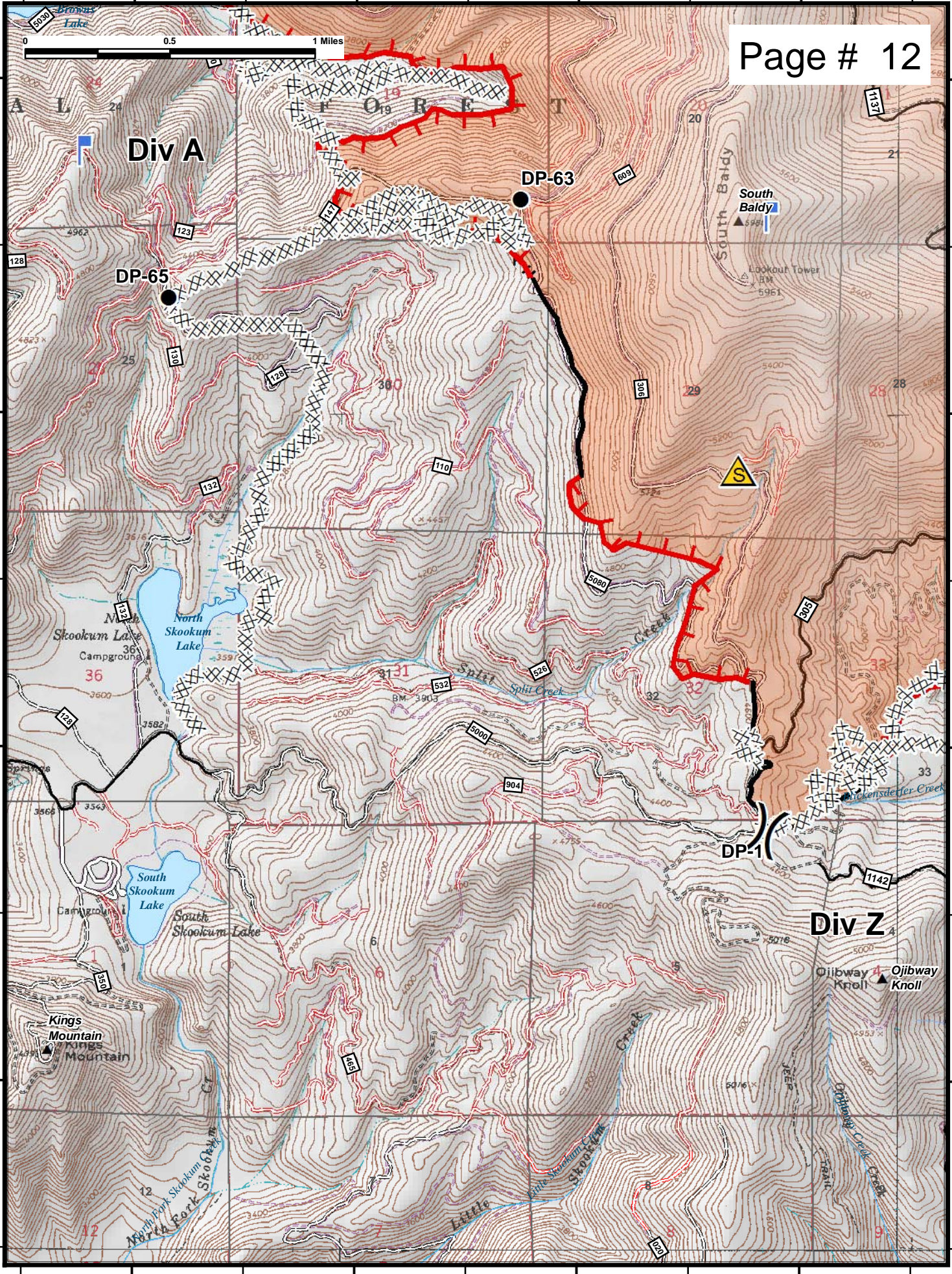
48°23'N

117°11'W

117°10'W

117°9'W

117°8'W



Div A

Div Z

REF

DP-63

DP-65

DP-1

Ojibway Knoll

North Skookum Lake

South Skookum Lake

Kings Mountain

South Baldy

Lookout Tower

North Park Skookum

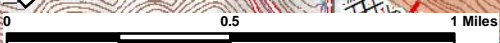
Little Skookum

Skookum Creek

Ojibway Creek

Split Creek

Wicksdefer Creek



117°8'W

117°7'W

117°6'W

117°5'W

48°26'N

48°26'N

48°25'N

48°25'N

48°24'N

48°24'N

48°23'N

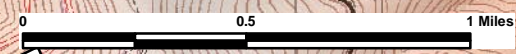
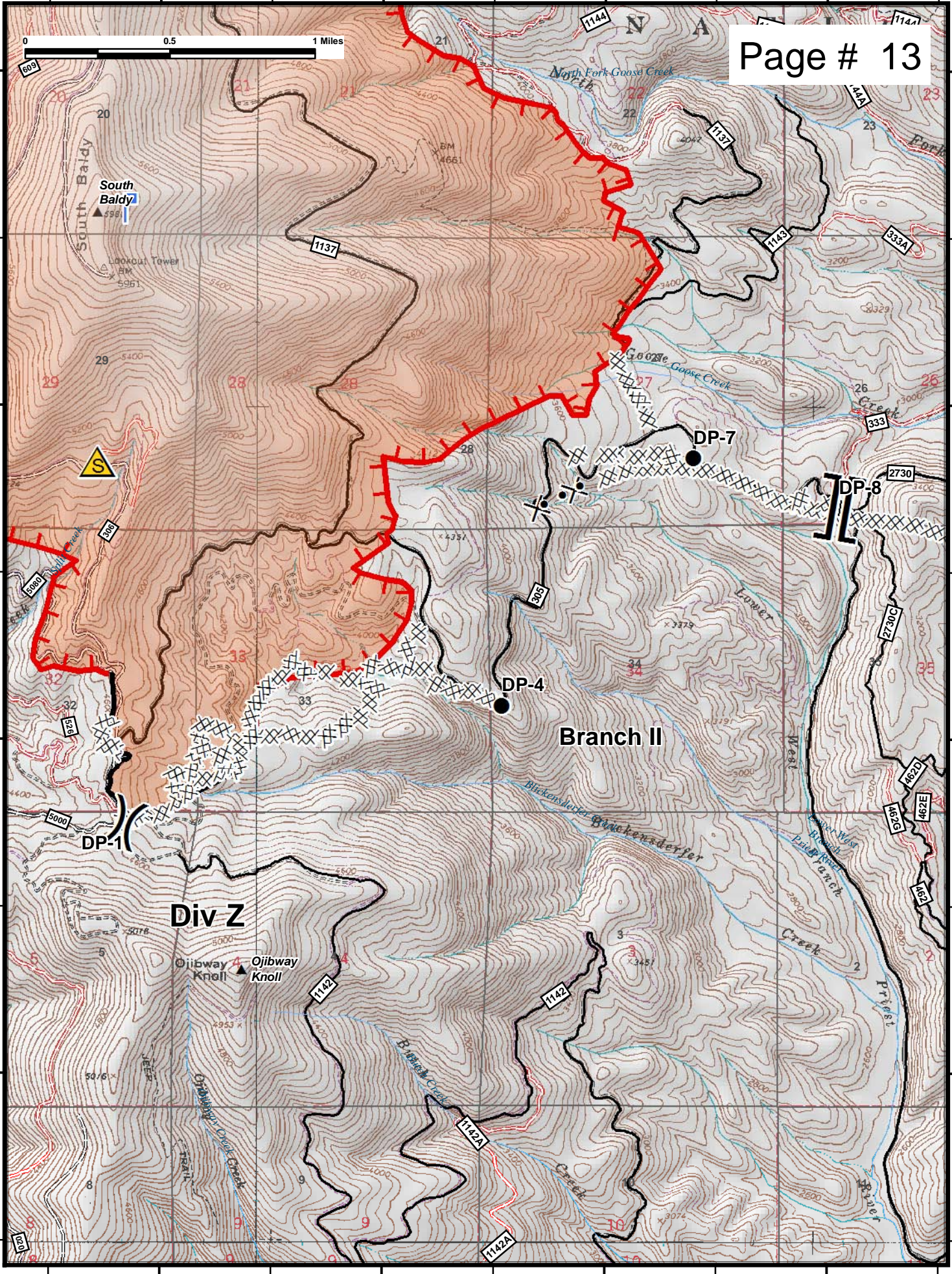
48°23'N

117°8'W

117°7'W

117°6'W

117°5'W

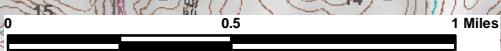


117°5'W

117°4'W

117°3'W

117°2'W



Page # 14

Div T

48°26'N

48°26'N

48°25'N

48°25'N

48°24'N

48°24'N

48°23'N

48°23'N

117°5'W

117°4'W

117°3'W

117°2'W

