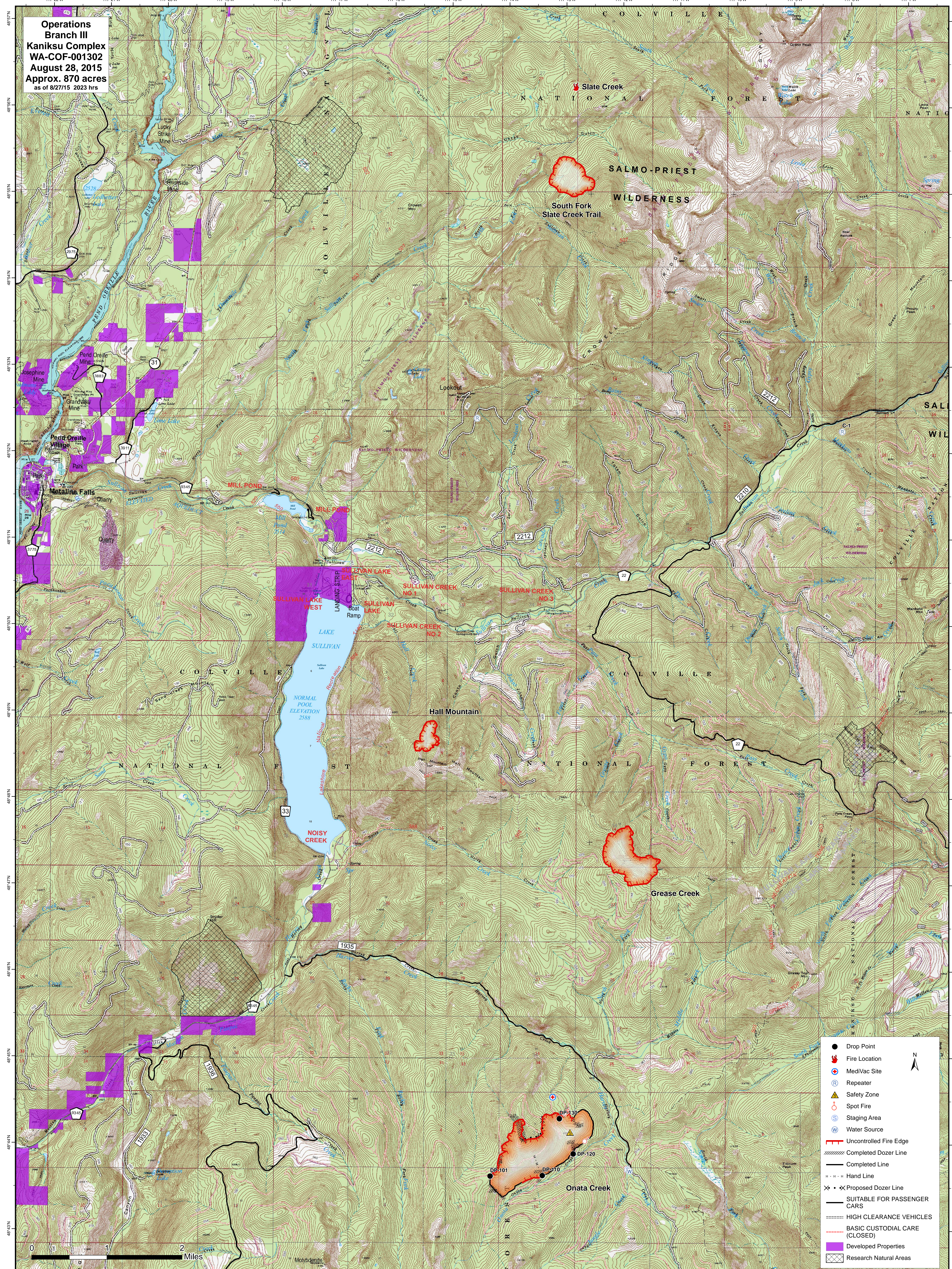


Operations
Branch III
Kaniksu Complex
WA-COF-001302
August 28, 2015
Approx. 870 acres
 as of 8/27/15 2023 hrs



- Drop Point
- 🔥 Fire Location
- 🚑 MediVac Site
- 📡 Repeater
- ⚠️ Safety Zone
- 🔦 Spot Fire
- 📍 Staging Area
- 💧 Water Source
- 🔴 Uncontrolled Fire Edge
- ⊘ Completed Dozer Line
- Completed Line
- ⋯ Hand Line
- ⊗ Proposed Dozer Line
- SUITABLE FOR PASSENGER CARS
- HIGH CLEARANCE VEHICLES
- BASIC CUSTODIAL CARE (CLOSED)
- 🏠 Developed Properties
- 🌲 Research Natural Areas

