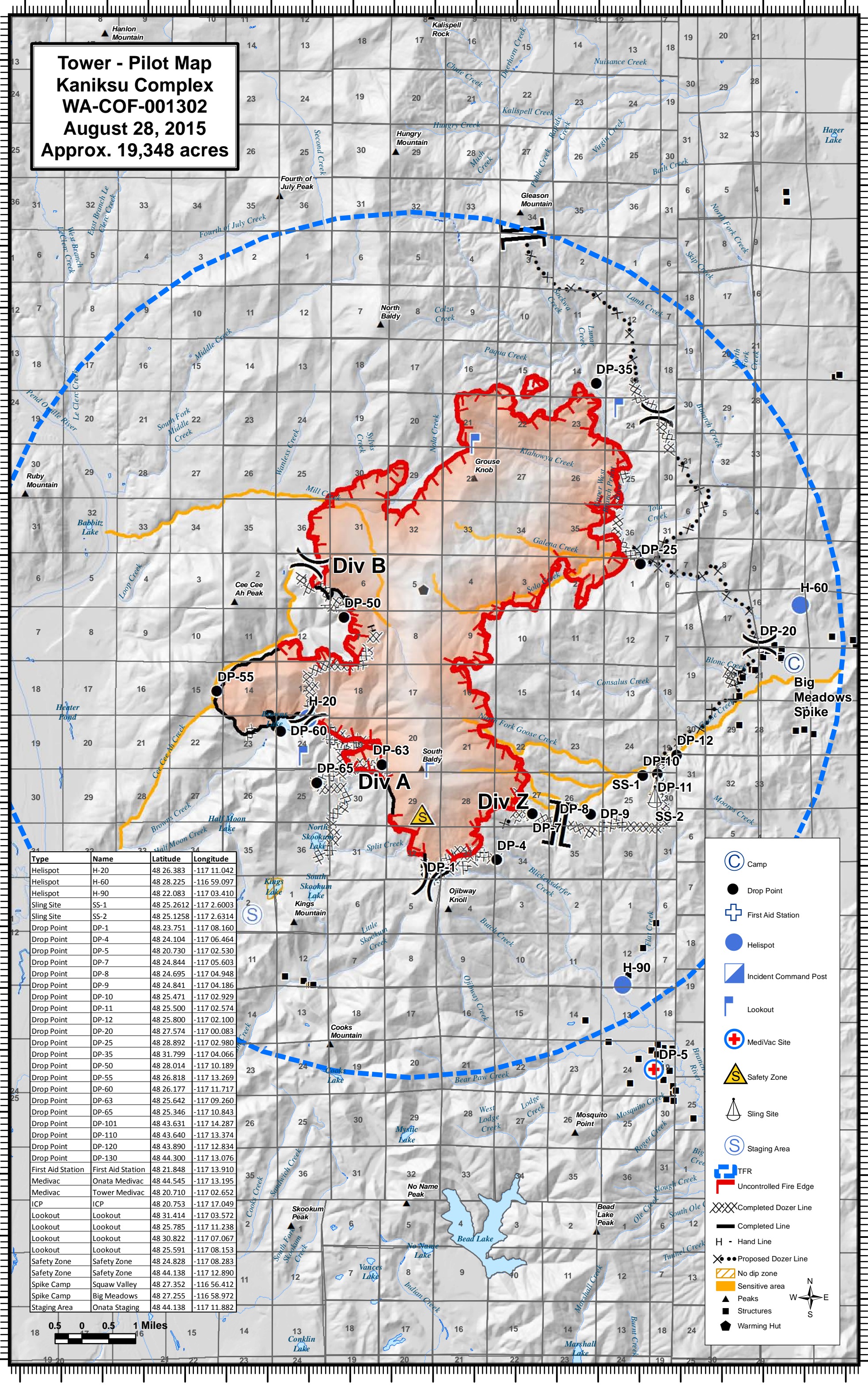


117°18'W 117°16'W 117°14'W 117°12'W 117°10'W 117°8'W 117°6'W 117°4'W 117°2'W 117°0'W 116°58'W

**Tower - Pilot Map**  
**Kaniksu Complex**  
**WA-COF-001302**  
**August 28, 2015**  
**Approx. 19,348 acres**



Type	Name	Latitude	Longitude
Helispot	H-20	48 26.383	-117 11.042
Helispot	H-60	48 28.225	-116 59.097
Helispot	H-90	48 22.083	-117 03.410
Sling Site	SS-1	48 25.2612	-117 2.6003
Sling Site	SS-2	48 25.1258	-117 2.6314
Drop Point	DP-1	48.23.751	-117 08.160
Drop Point	DP-4	48 24.104	-117 06.464
Drop Point	DP-5	48 20.730	-117 02.530
Drop Point	DP-7	48 24.844	-117 05.603
Drop Point	DP-8	48 24.695	-117 04.948
Drop Point	DP-9	48 24.841	-117 04.186
Drop Point	DP-10	48 25.471	-117 02.929
Drop Point	DP-11	48 25.500	-117 02.574
Drop Point	DP-12	48 25.800	-117 02.100
Drop Point	DP-20	48 27.574	-117 00.083
Drop Point	DP-25	48 28.892	-117 02.980
Drop Point	DP-35	48 31.799	-117 04.066
Drop Point	DP-50	48 28.014	-117 10.189
Drop Point	DP-55	48 26.818	-117 13.269
Drop Point	DP-60	48 26.177	-117 11.717
Drop Point	DP-63	48 25.642	-117 09.260
Drop Point	DP-65	48 25.346	-117 10.843
Drop Point	DP-101	48 43.631	-117 14.287
Drop Point	DP-110	48 43.640	-117 13.374
Drop Point	DP-120	48 43.890	-117 12.834
Drop Point	DP-130	48 44.300	-117 13.076
First Aid Station	First Aid Station	48 21.848	-117 13.910
Medivac	Onata Medivac	48 44.545	-117 13.195
Medivac	Tower Medivac	48 20.710	-117 02.652
ICP	ICP	48 20.753	-117 17.049
Lookout	Lookout	48 31.414	-117 03.572
Lookout	Lookout	48 25.785	-117 11.238
Lookout	Lookout	48 30.822	-117 07.067
Lookout	Lookout	48 25.591	-117 08.153
Safety Zone	Safety Zone	48 24.828	-117 08.283
Safety Zone	Safety Zone	48 44.138	-117 12.890
Spike Camp	Squaw Valley	48 27.352	-116 56.412
Spike Camp	Big Meadows	48 27.255	-116 58.972
Staging Area	Onata Staging	48 44.138	-117 11.882

- Camp
- Drop Point
- First Aid Station
- Helispot
- Incident Command Post
- Lookout
- Medivac Site
- Safety Zone
- Sling Site
- Staging Area
- TFR
- Uncontrolled Fire Edge
- Completed Dozer Line
- Completed Line
- Hand Line
- Proposed Dozer Line
- No dip zone
- Sensitive area
- Peaks
- Structures
- Warming Hut



117°18'W 117°16'W 117°14'W 117°12'W 117°10'W 117°8'W 117°6'W 117°4'W 117°2'W 117°0'W 116°58'W