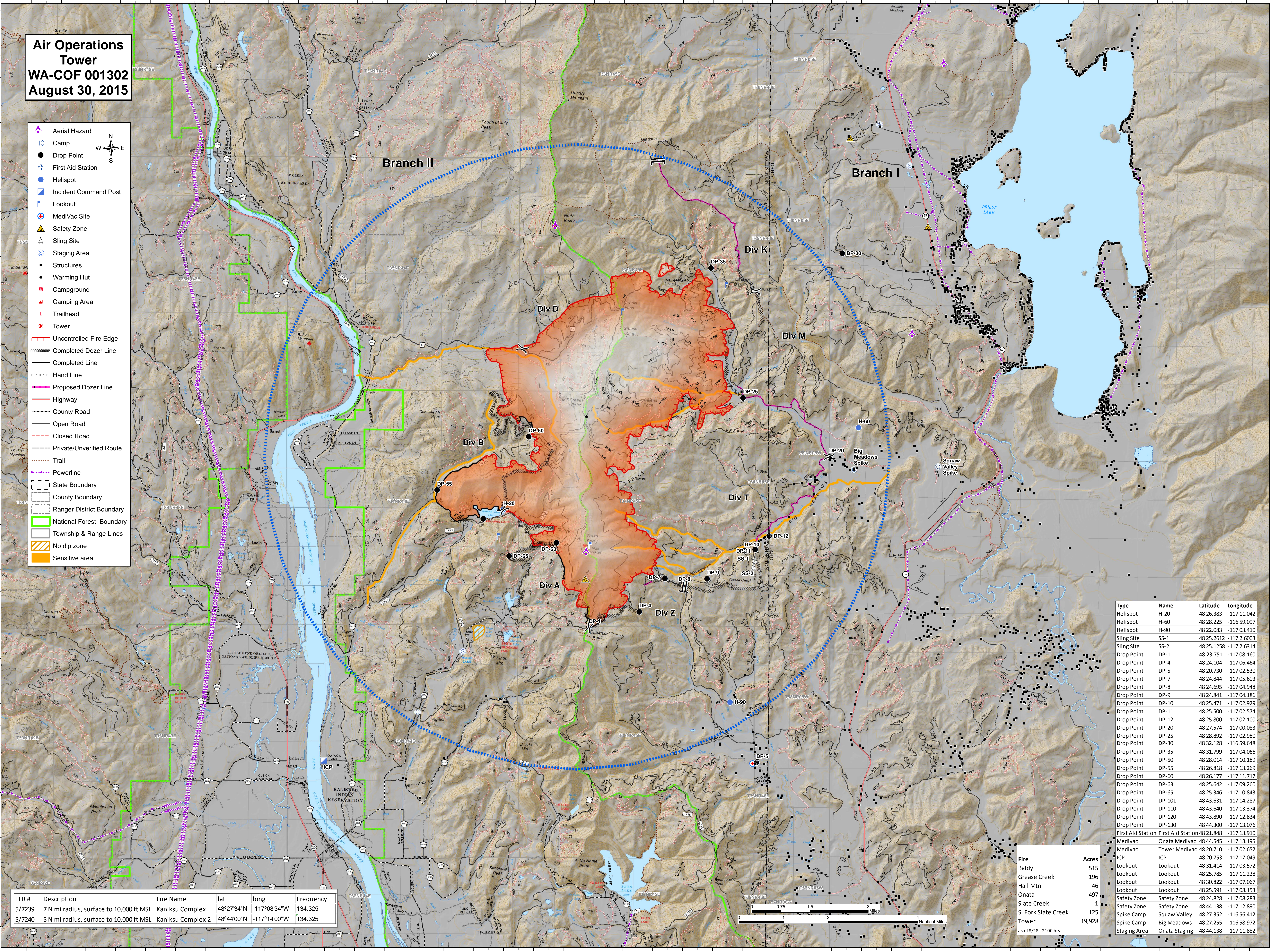
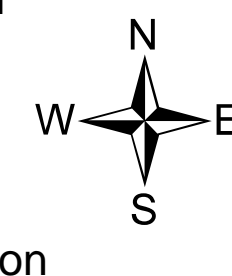


Air Operations Tower WA-COF 001302 August 30, 2015

- Aerial Hazard
- Camp
- Drop Point
- First Aid Station
- Helispot
- Incident Command Post
- Lookout
- MediVac Site
- Safety Zone
- Sling Site
- Staging Area
- Structures
- Warming Hut
- Campground
- Camping Area
- Trailhead
- Tower
- Uncontrolled Fire Edge
- Completed Dozer Line
- Completed Line
- Hand Line
- Proposed Dozer Line
- Highway
- County Road
- Open Road
- Closed Road
- Private/Unverified Route
- Trail
- Powerline
- State Boundary
- County Boundary
- Ranger District Boundary
- National Forest Boundary
- Township & Range Lines
- No dip zone
- Sensitive area



Type	Name	Latitude	Longitude
Helispot	H-20	48 26.383	-117 11.042
Helispot	H-60	48 28.225	-116 59.097
Helispot	H-90	48 22.083	-117 03.410
Sling Site	SS-1	48 25.2612	-117 2.6003
Sling Site	SS-2	48 25.1258	-117 2.6314
Drop Point	DP-1	48 23.751	-117 08.160
Drop Point	DP-4	48 24.104	-117 06.464
Drop Point	DP-5	48 20.730	-117 02.530
Drop Point	DP-7	48 24.844	-117 05.603
Drop Point	DP-8	48 24.695	-117 04.948
Drop Point	DP-9	48 24.841	-117 04.186
Drop Point	DP-10	48 25.471	-117 02.929
Drop Point	DP-11	48 25.500	-117 02.574
Drop Point	DP-12	48 25.800	-117 02.100
Drop Point	DP-20	48 27.574	-117 00.083
Drop Point	DP-25	48 28.892	-117 02.980
Drop Point	DP-30	48 32.128	-116 59.648
Drop Point	DP-35	48 31.799	-117 04.066
Drop Point	DP-50	48 28.014	-117 10.189
Drop Point	DP-55	48 26.818	-117 13.269
Drop Point	DP-60	48 26.177	-117 11.717
Drop Point	DP-63	48 25.642	-117 09.260
Drop Point	DP-65	48 25.346	-117 10.843
Drop Point	DP-101	48 43.631	-117 14.287
Drop Point	DP-110	48 43.640	-117 13.374
Drop Point	DP-120	48 43.890	-117 12.834
Drop Point	DP-130	48 44.300	-117 13.076
First Aid Station	First Aid Station	48 21.848	-117 13.910
MediVac	Onata MediVac	48 44.545	-117 13.195
MediVac	Tower MediVac	48 20.710	-117 02.652
ICP	ICP	48 20.753	-117 17.049
Lookout	Lookout	48 31.414	-117 03.572
Lookout	Lookout	48 25.785	-117 11.238
Lookout	Lookout	48 30.822	-117 07.067
Lookout	Lookout	48 25.591	-117 08.153
Safety Zone	Safety Zone	48 24.828	-117 08.283
Safety Zone	Safety Zone	48 44.138	-117 12.890
Spike Camp	Squaw Valley	48 27.352	-116 56.412
Spike Camp	Big Meadows	48 27.255	-116 58.972
Staging Area	Onata Staging	48 44.138	-117 11.882

Fire	Acres
Baldy	515
Grease Creek	196
Hall Mtn	46
Onata	497
Slate Creek	1
S. Fork Slate Creek	125
Tower	19,928

TFR #	Description	Fire Name	lat	long	Frequency
5/7239	7 N mi radius, surface to 10,000 ft MSL	Kaniksu Complex	48°27'34"N	-117°08'34"W	134.325
5/7240	5 N mi radius, surface to 10,000 ft MSL	Kaniksu Complex 2	48°44'00"N	-117°14'00"W	134.325

