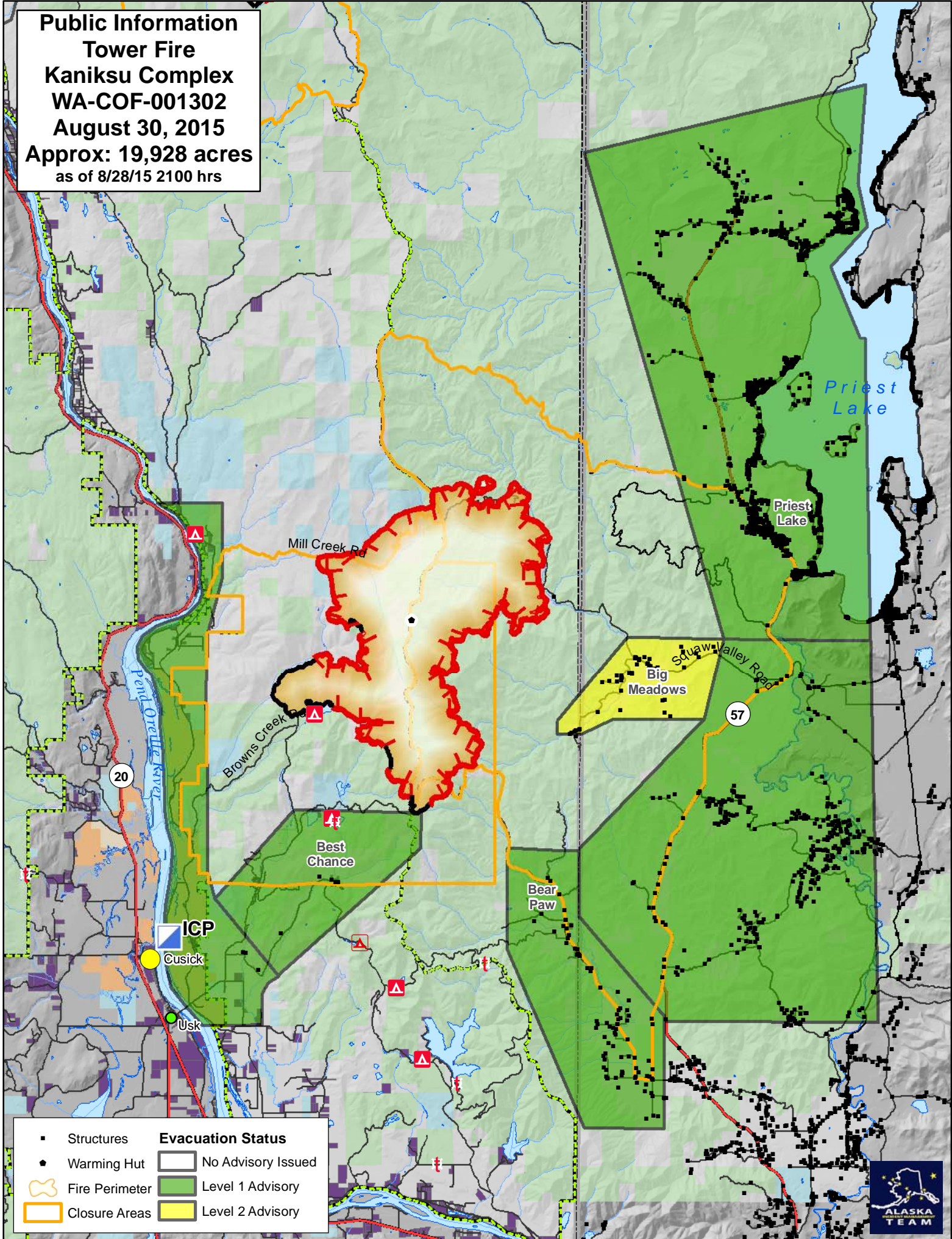


**Public Information**  
**Tower Fire**  
**Kaniksu Complex**  
**WA-COF-001302**  
**August 30, 2015**  
**Approx: 19,928 acres**  
**as of 8/28/15 2100 hrs**



▪ Structures	<b>Evacuation Status</b>
• Warming Hut	□ No Advisory Issued
🔥 Fire Perimeter	🟢 Level 1 Advisory
🟠 Closure Areas	🟡 Level 2 Advisory

