

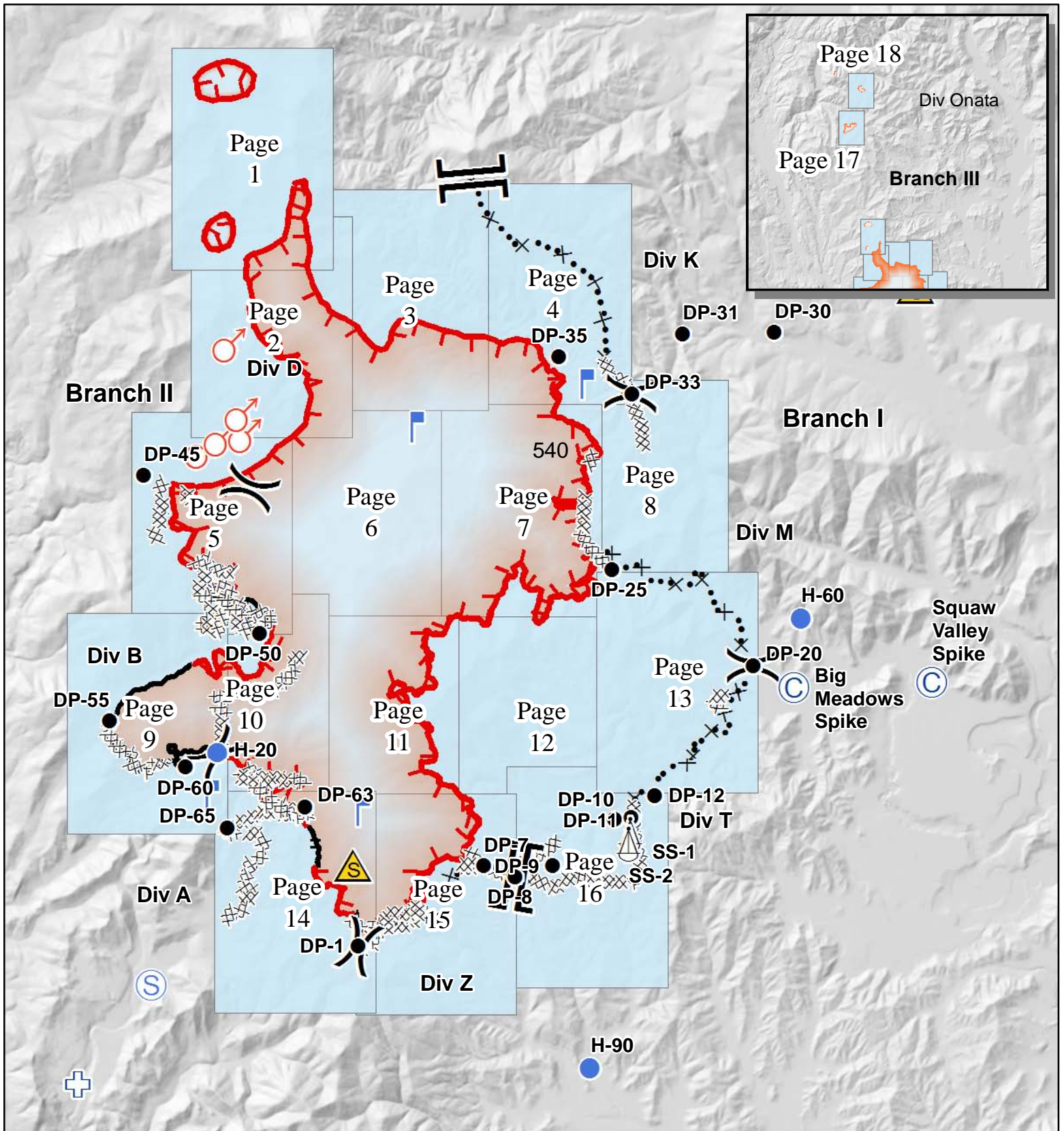
Kaniksu Complex WA-COF-001302 IAP Maps August 31, 2015

Fire	Acres
Baldy	515
Grease Creek	196
Hall Mtn	46
Onata	540
Slate Creek	1
S. Fork Slate Creek	125
Tower	24,021

as of 8/30 2100 hrs

	Structures		Safety Zone		Uncontrolled Fire Edge
	Warming Hut		Spot Fire		Completed Dozer Line
	Sling Site		Staging Area		H - H - Hand Line
	Camp		First Aid Station		Proposed Dozer Line
	Drop Point		Roads		Open
	Lookout				Closed

N

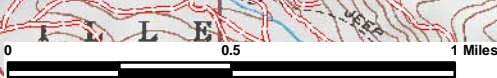


117°12'W

117°11'W

117°10'W

117°9'W



Page # 1

48°36'N

48°36'N

48°35'N

48°35'N

48°34'N

48°34'N

48°33'N

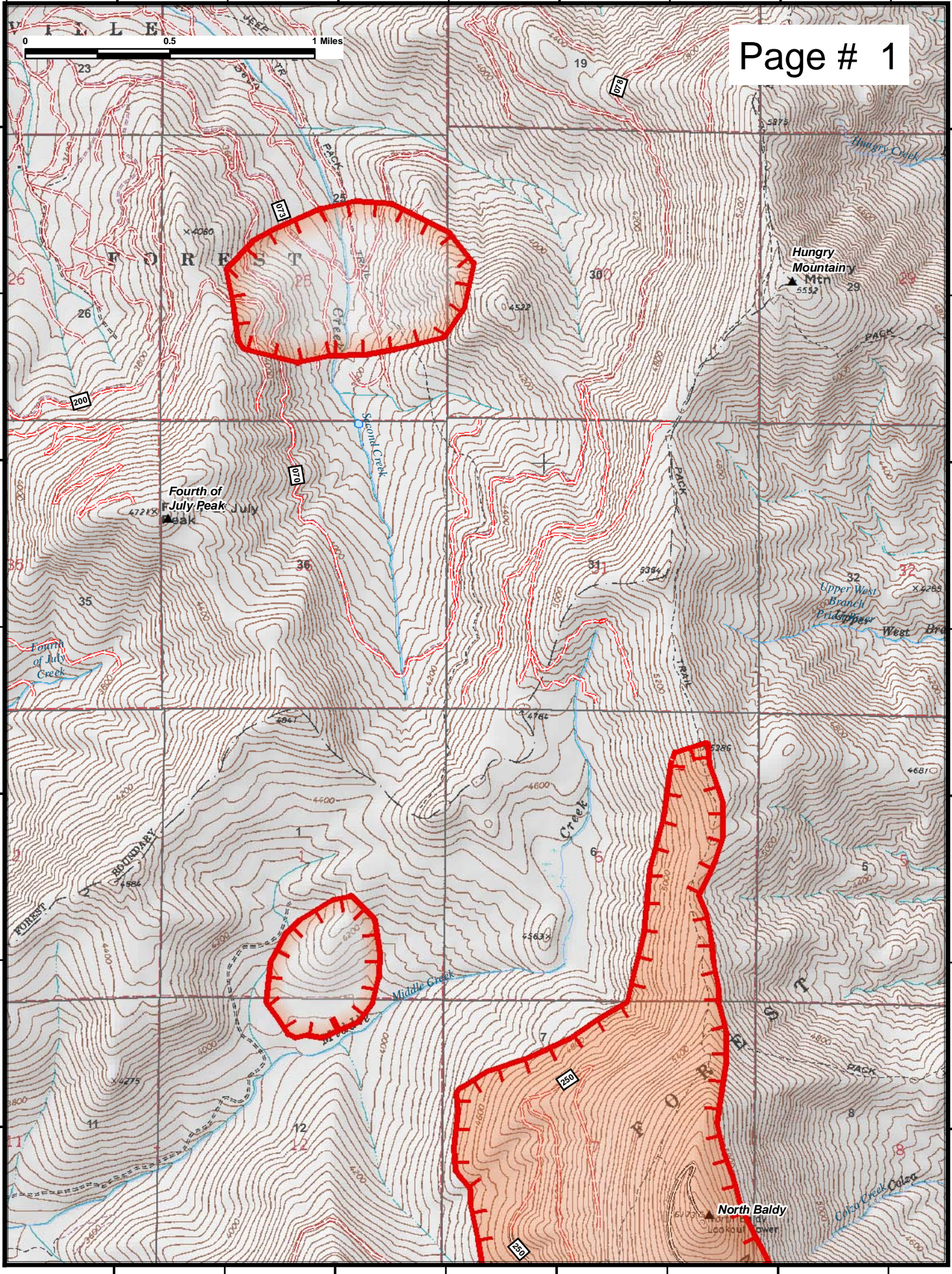
48°33'N

117°12'W

117°11'W

117°10'W

117°9'W

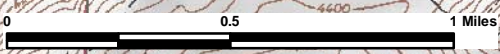


117°12'W 117°11'W 117°10'W 117°9'W 117°8'W

48°34'N

48°34'N

Page # 2



48°33'N

48°33'N

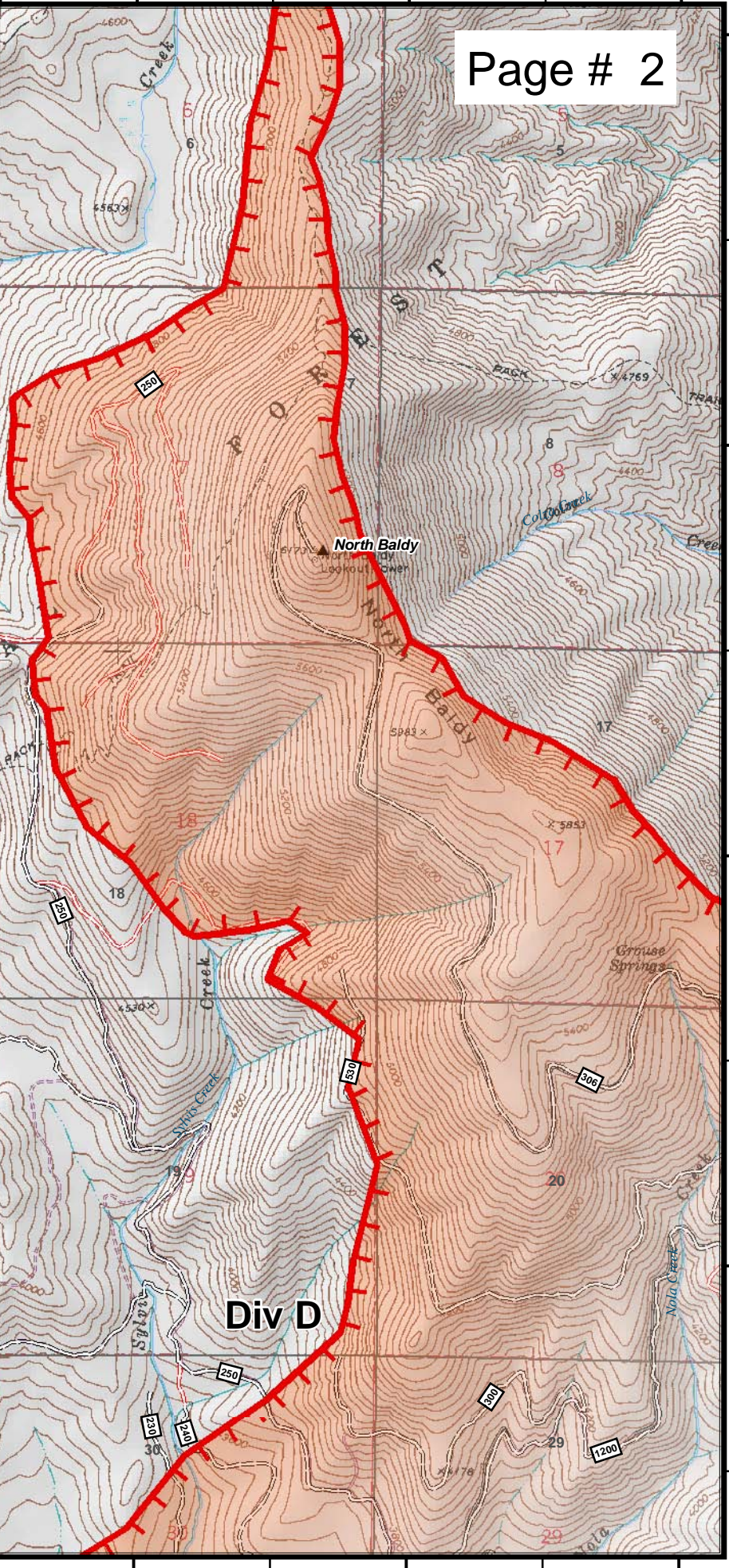
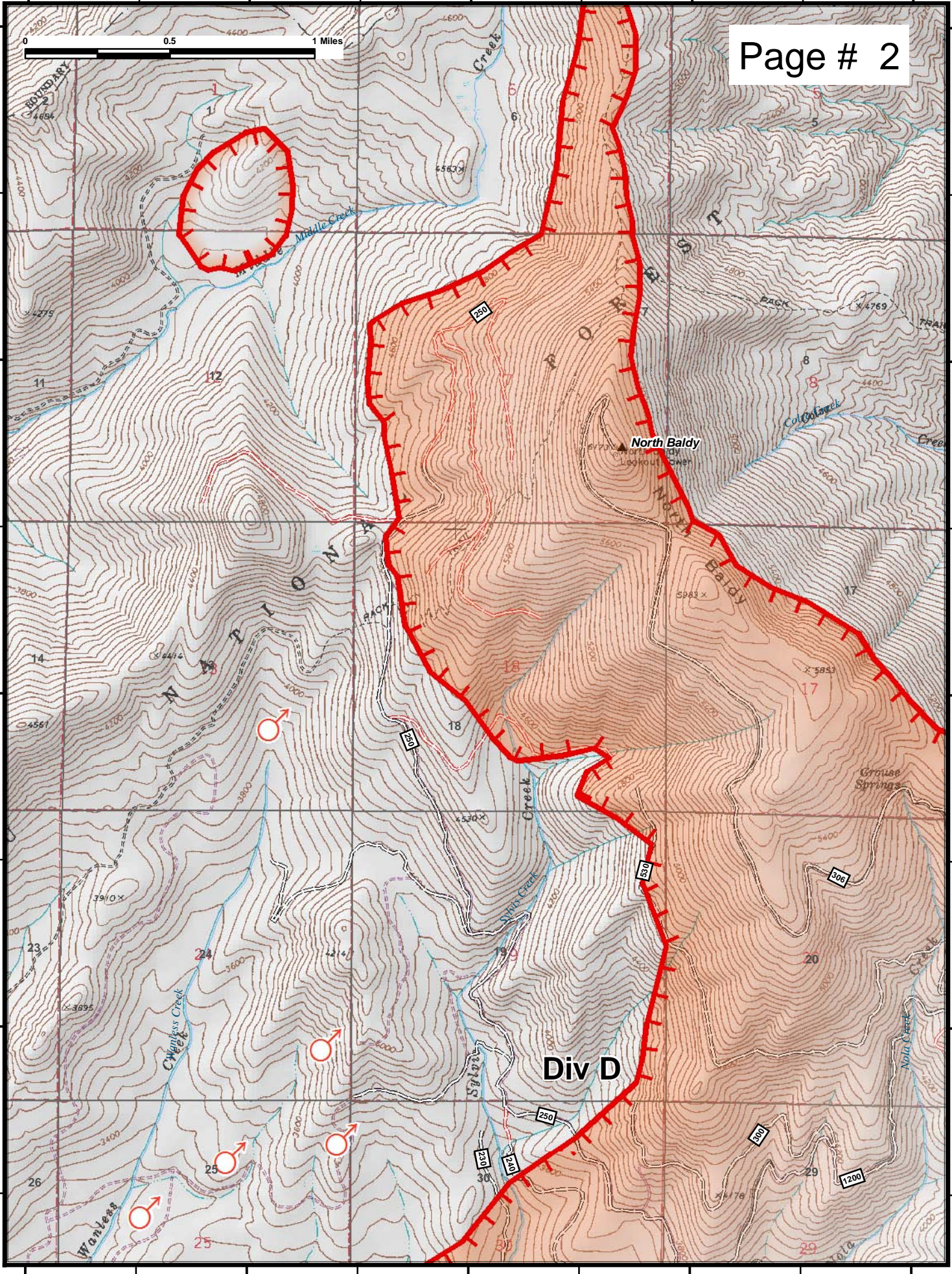
48°32'N

48°32'N

48°31'N

48°31'N

117°12'W 117°11'W 117°10'W 117°9'W 117°8'W



North Baldy

Div D

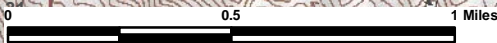


117°9'W

117°8'W

117°7'W

117°6'W



Page # 3

48°34'N

48°34'N

48°33'N

48°33'N

48°32'N

48°32'N

48°31'N

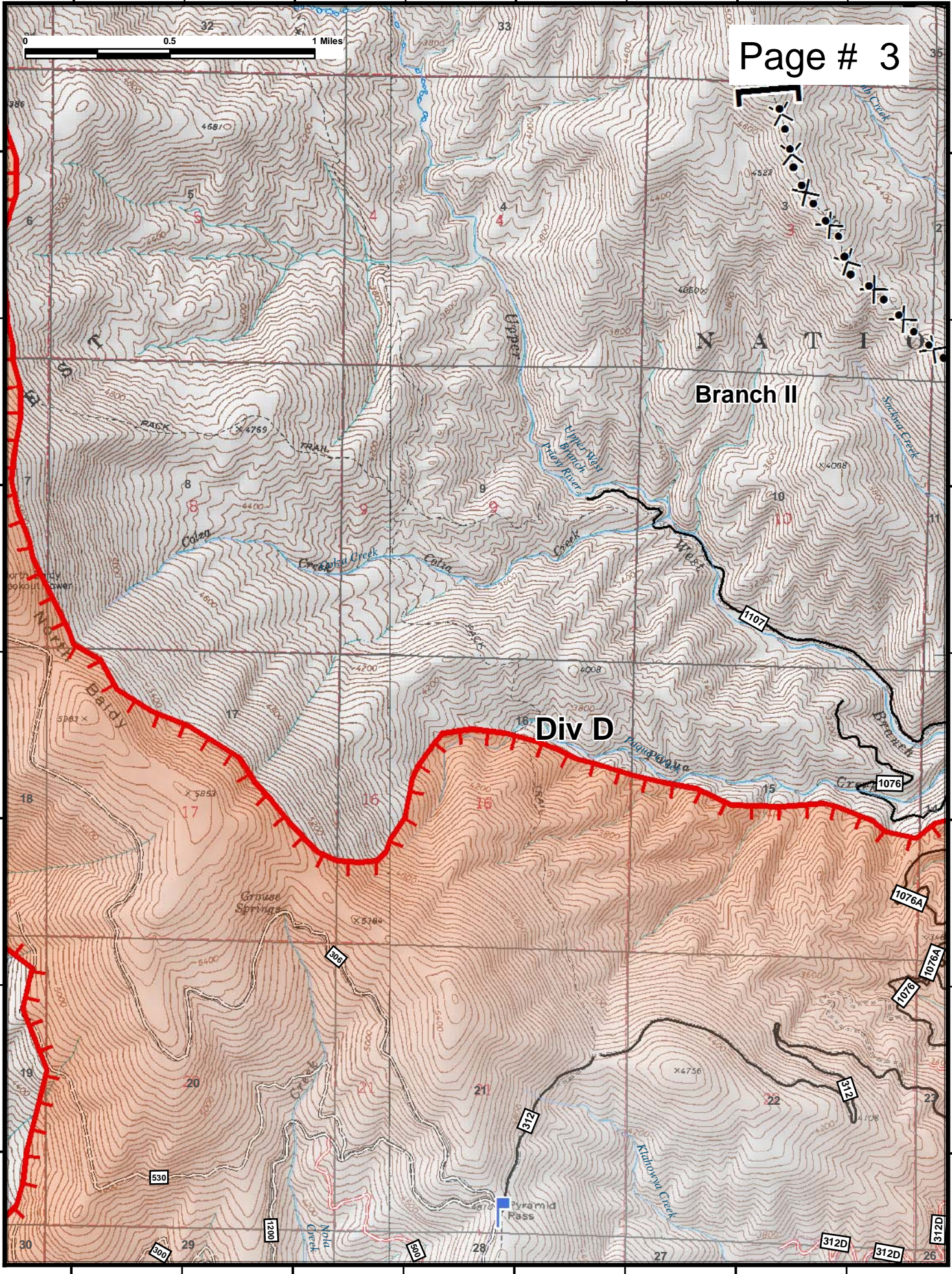
48°31'N

117°9'W

117°8'W

117°7'W

117°6'W



117°13'W

117°12'W

117°11'W

117°10'W

48°31'N

48°31'N

48°30'N

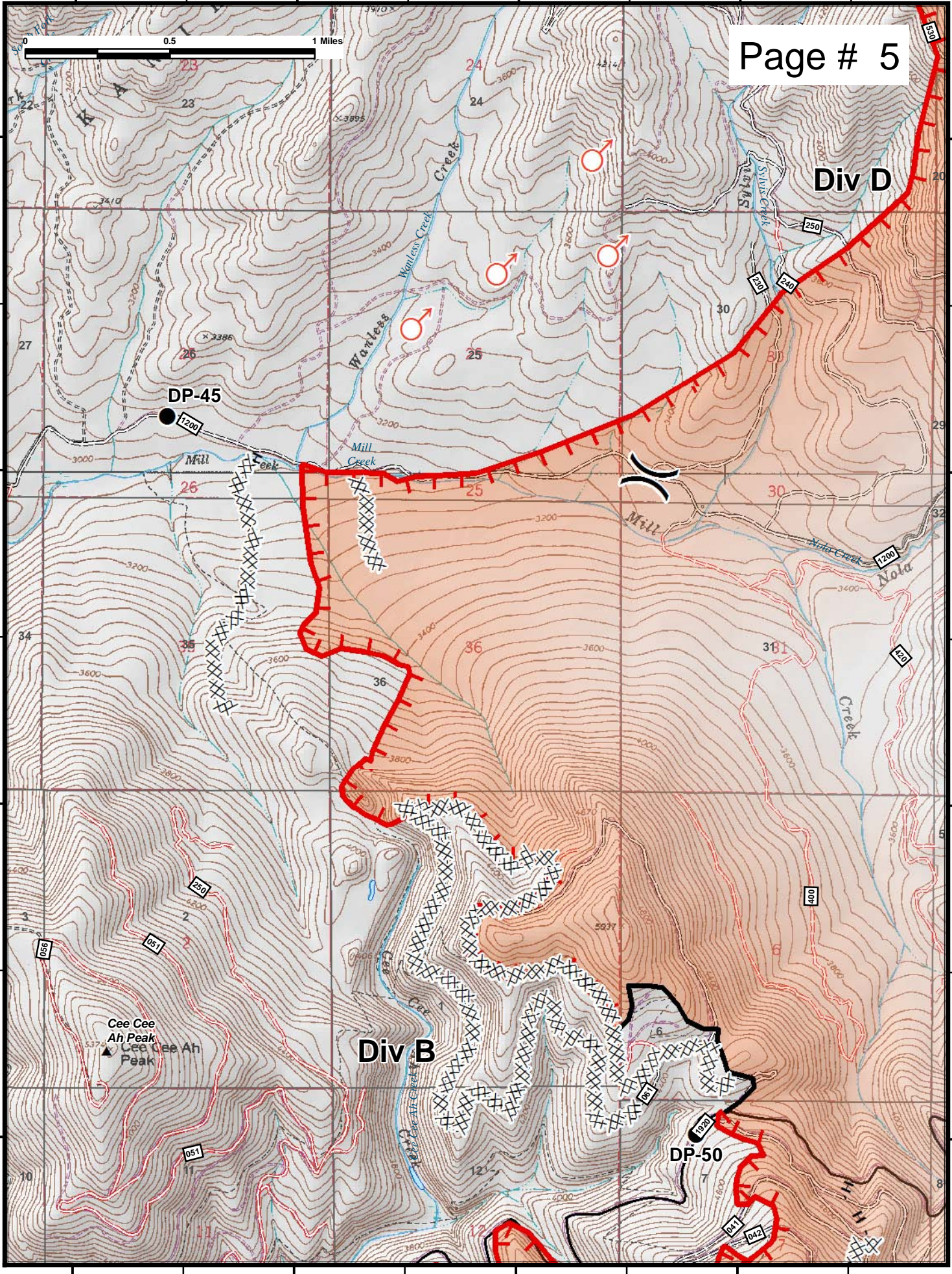
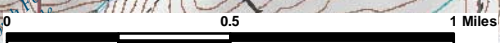
48°30'N

48°29'N

48°29'N

48°28'N

48°28'N



117°13'W

117°12'W

117°11'W

117°10'W

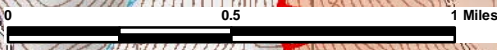
117°10'W

117°9'W

117°8'W

117°7'W

117°6'W



Page # 6

48°31'N

48°31'N

48°30'N

48°30'N

48°29'N

48°29'N

48°28'N

48°28'N

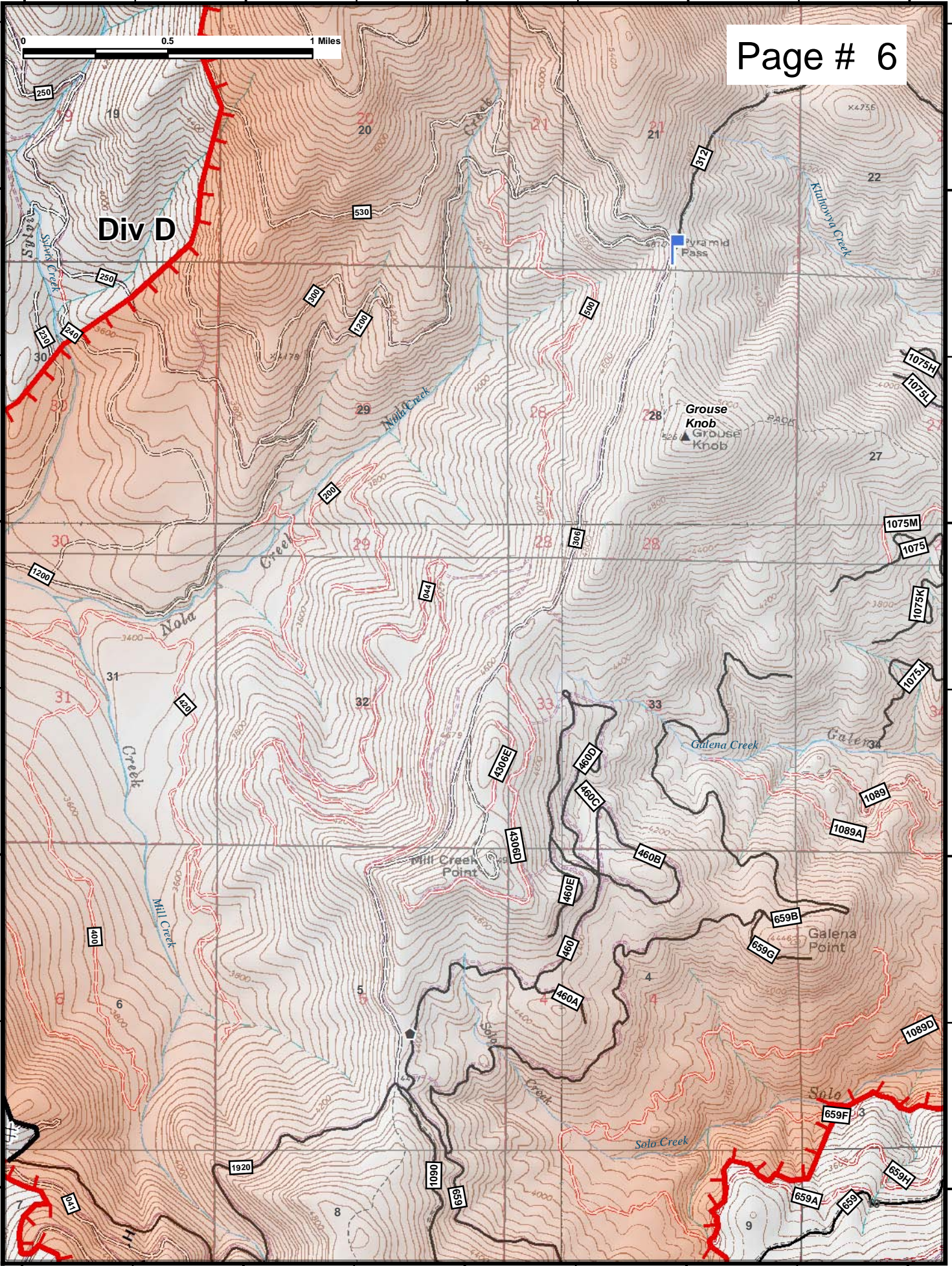
117°10'W

117°9'W

117°8'W

117°7'W

117°6'W

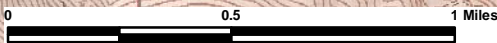


117°6'W

117°5'W

117°4'W

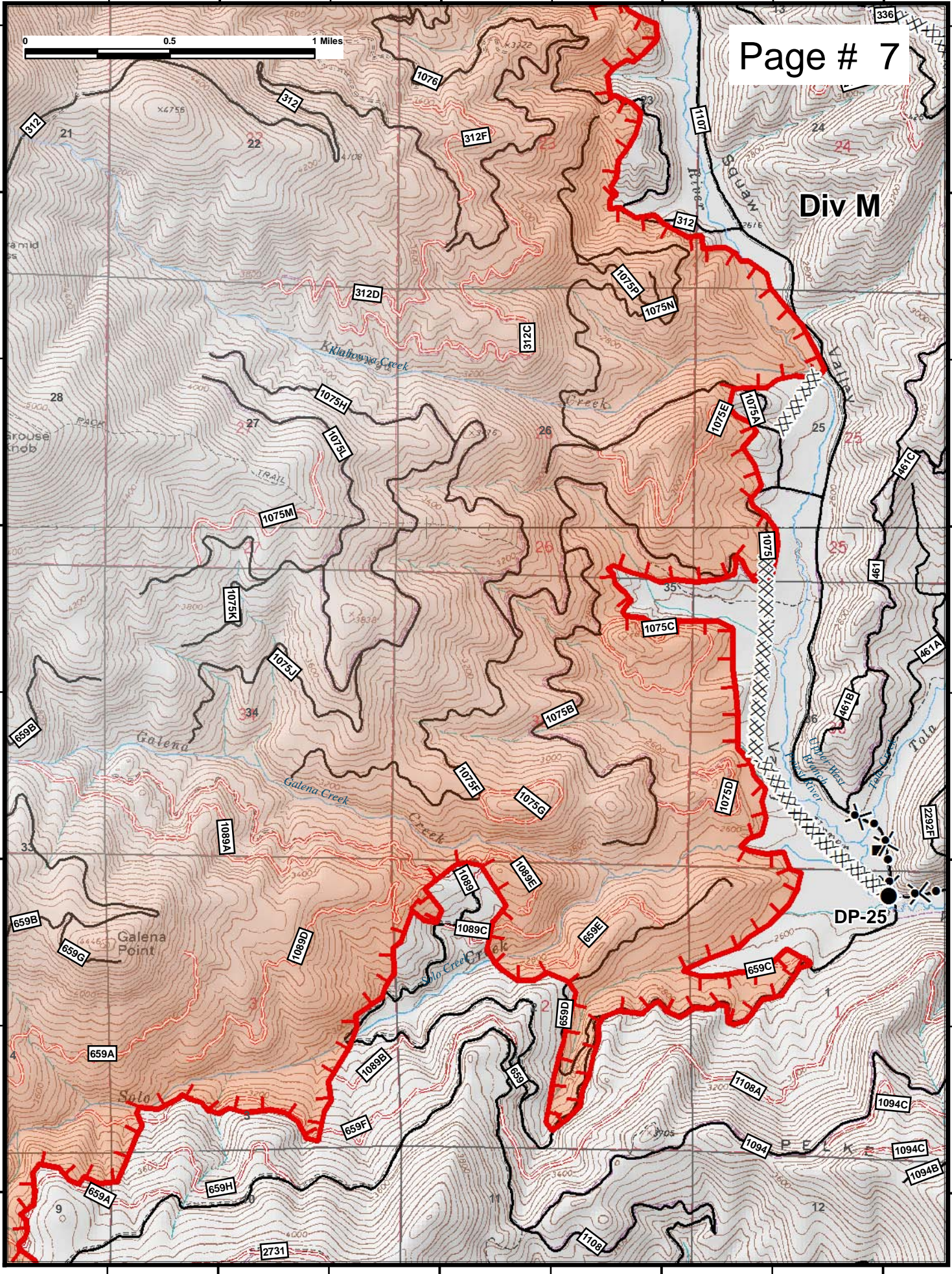
117°3'W



Page # 7

48°31'N
48°30'N
48°29'N
48°28'N

48°31'N
48°30'N
48°29'N
48°28'N



Div M

DP-25

117°6'W

117°5'W

117°4'W

117°3'W

117°4'W

117°3'W

117°2'W

117°1'W

Page # 8

48°31'N

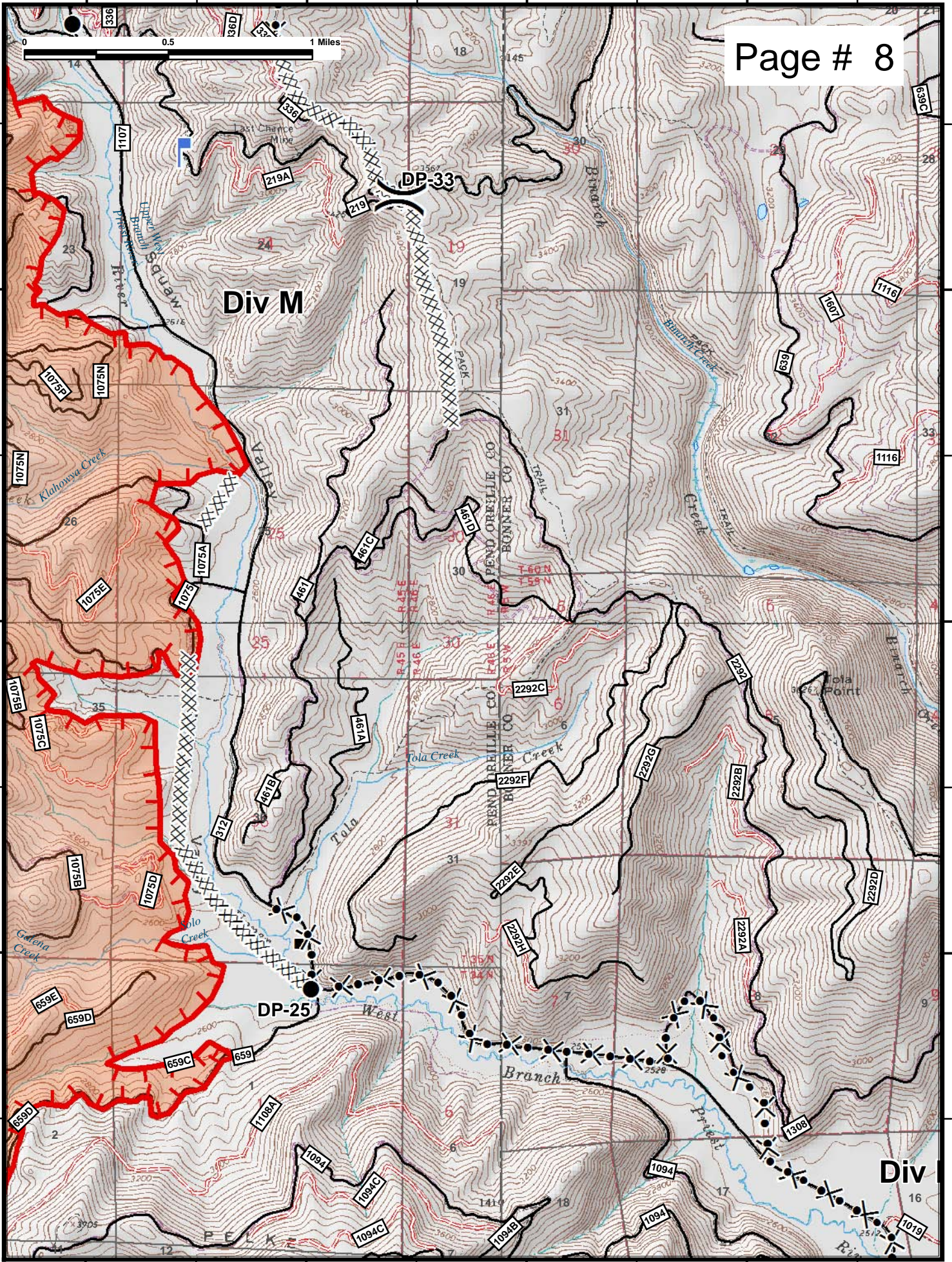
48°31'N

48°30'N

48°30'N

48°29'N

48°29'N



117°4'W

117°3'W

117°2'W

117°1'W



48°28'N

48°28'N

48°27'N

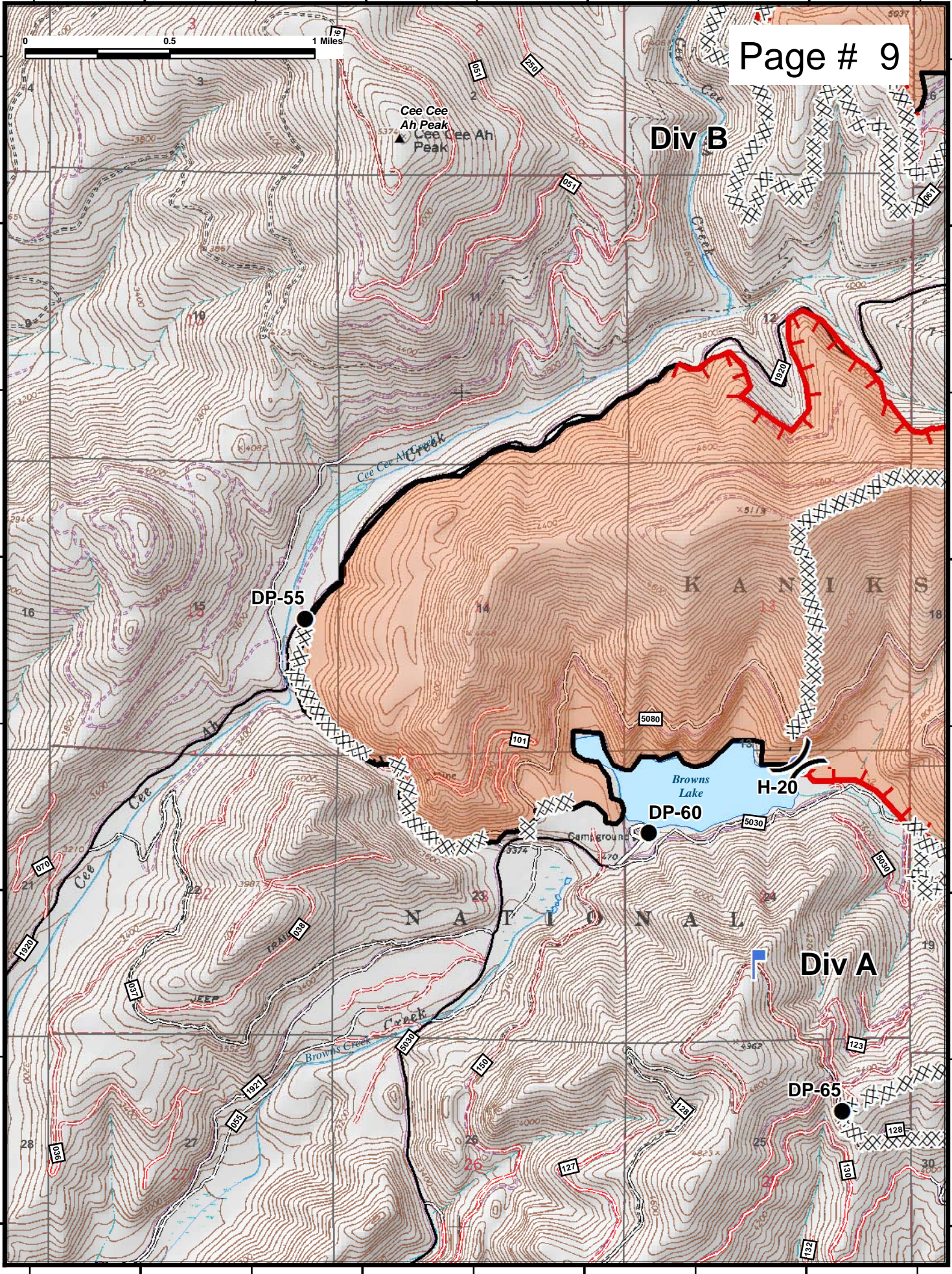
48°27'N

48°26'N

48°26'N

48°25'N

48°25'N



117°12'W

117°11'W

117°10'W

117°9'W



48°28'N

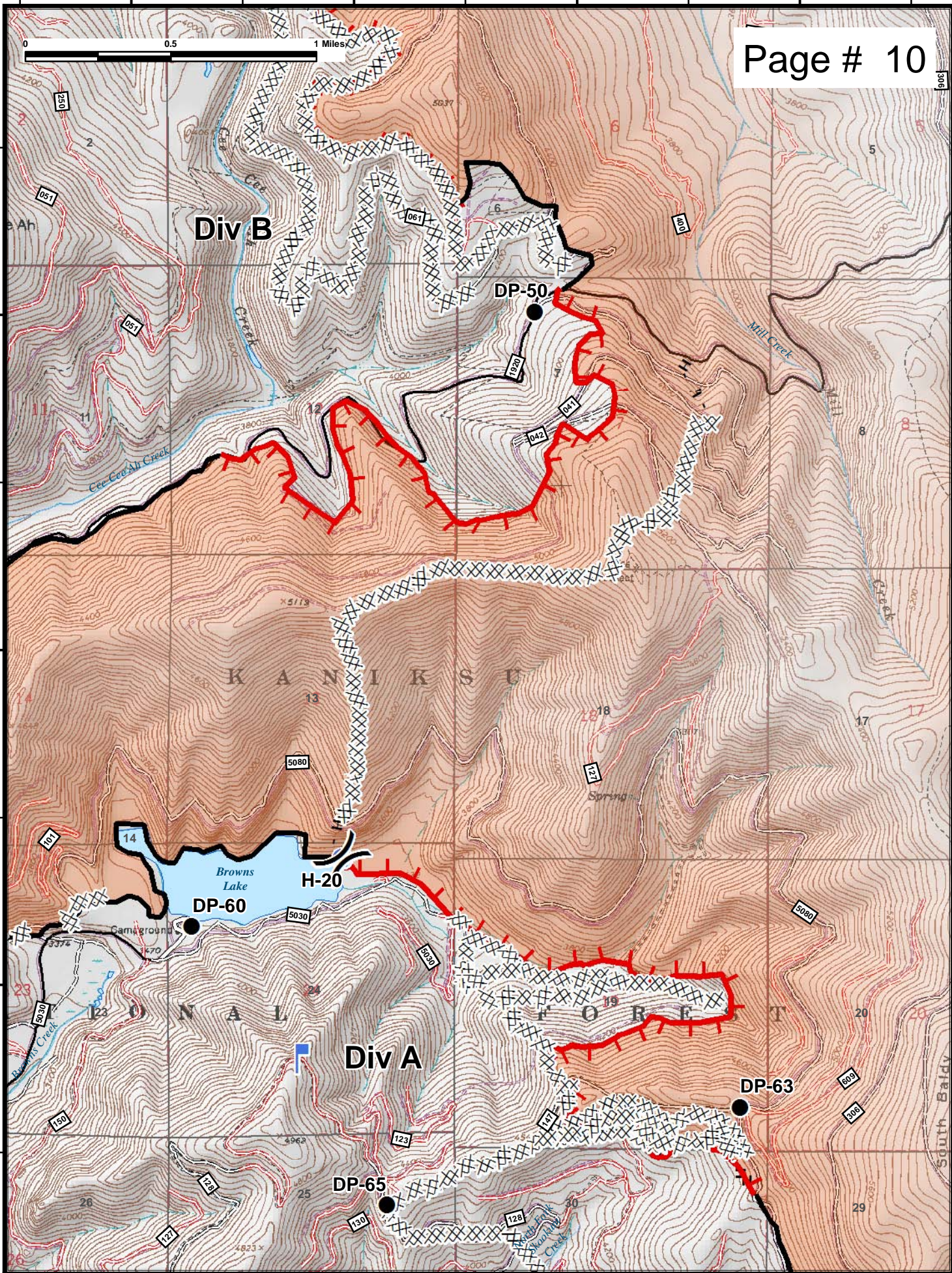
48°28'N

48°27'N

48°27'N

48°26'N

48°26'N



117°12'W

117°11'W

117°10'W

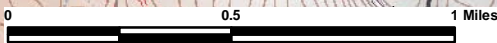
117°9'W

117°9'W

117°8'W

117°7'W

117°6'W



Page # 11

48°28'N

48°28'N

48°27'N

48°27'N

48°26'N

48°26'N

48°25'N

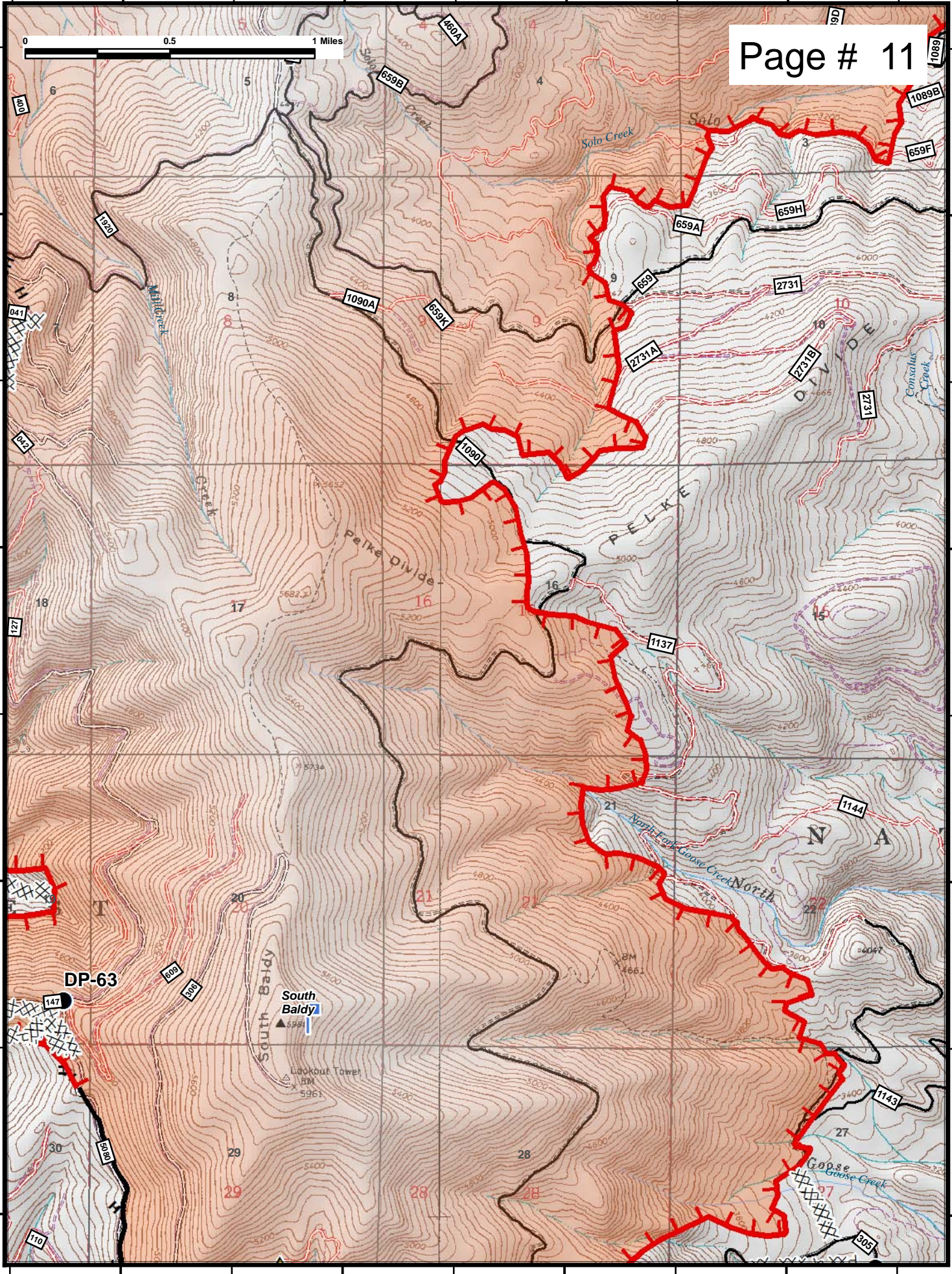
48°25'N

117°9'W

117°8'W

117°7'W

117°6'W

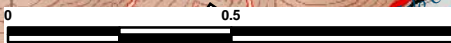


117°6'W

117°5'W

117°4'W

117°3'W



Page # 12

48°28'N

48°28'N

48°27'N

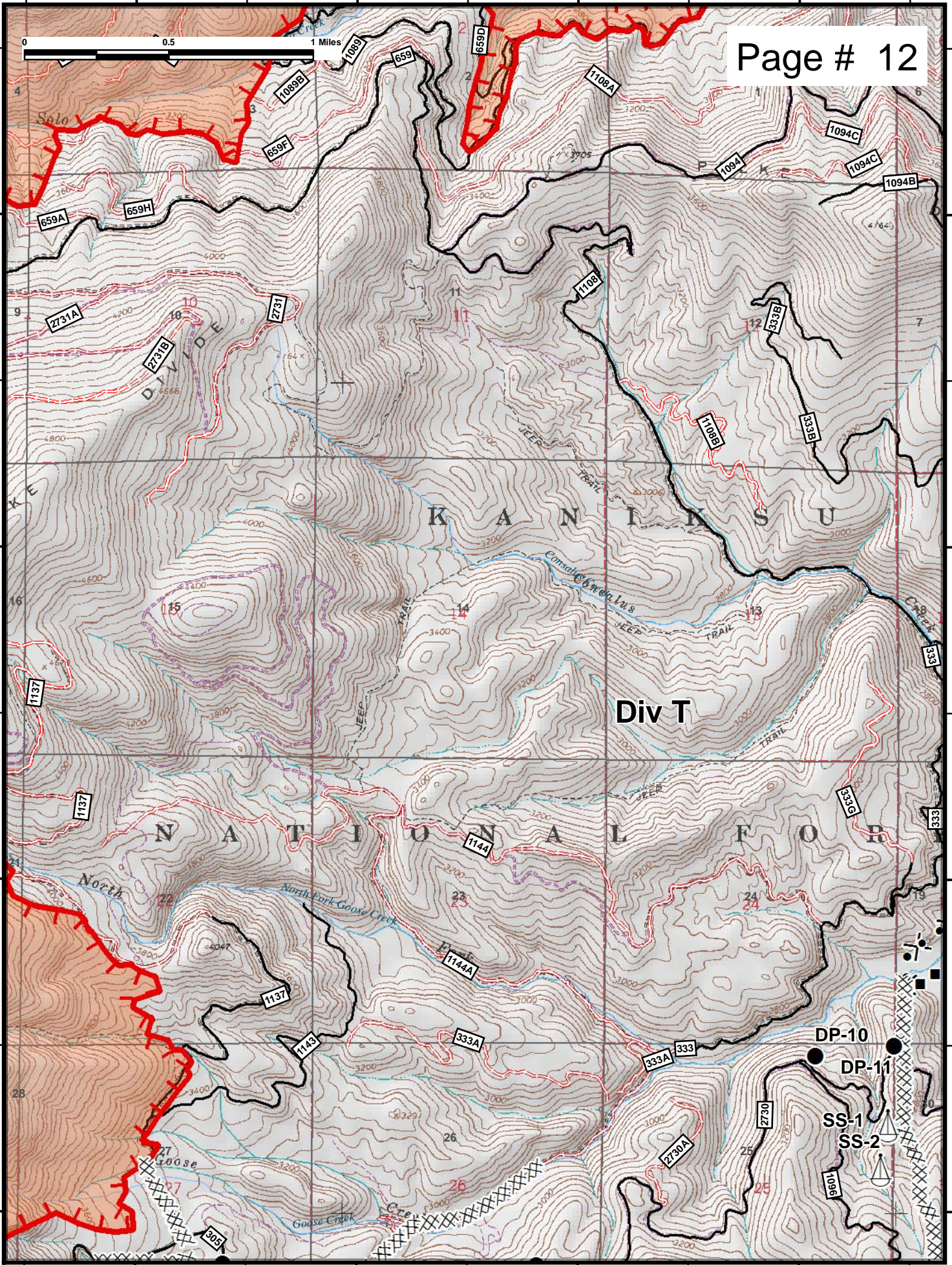
48°27'N

48°26'N

48°26'N

48°25'N

48°25'N



117°6'W

117°5'W

117°4'W

117°3'W

117°3'W

117°2'W

117°1'W

117°0'W

48°29'N

48°29'N

Page # 13

48°28'N

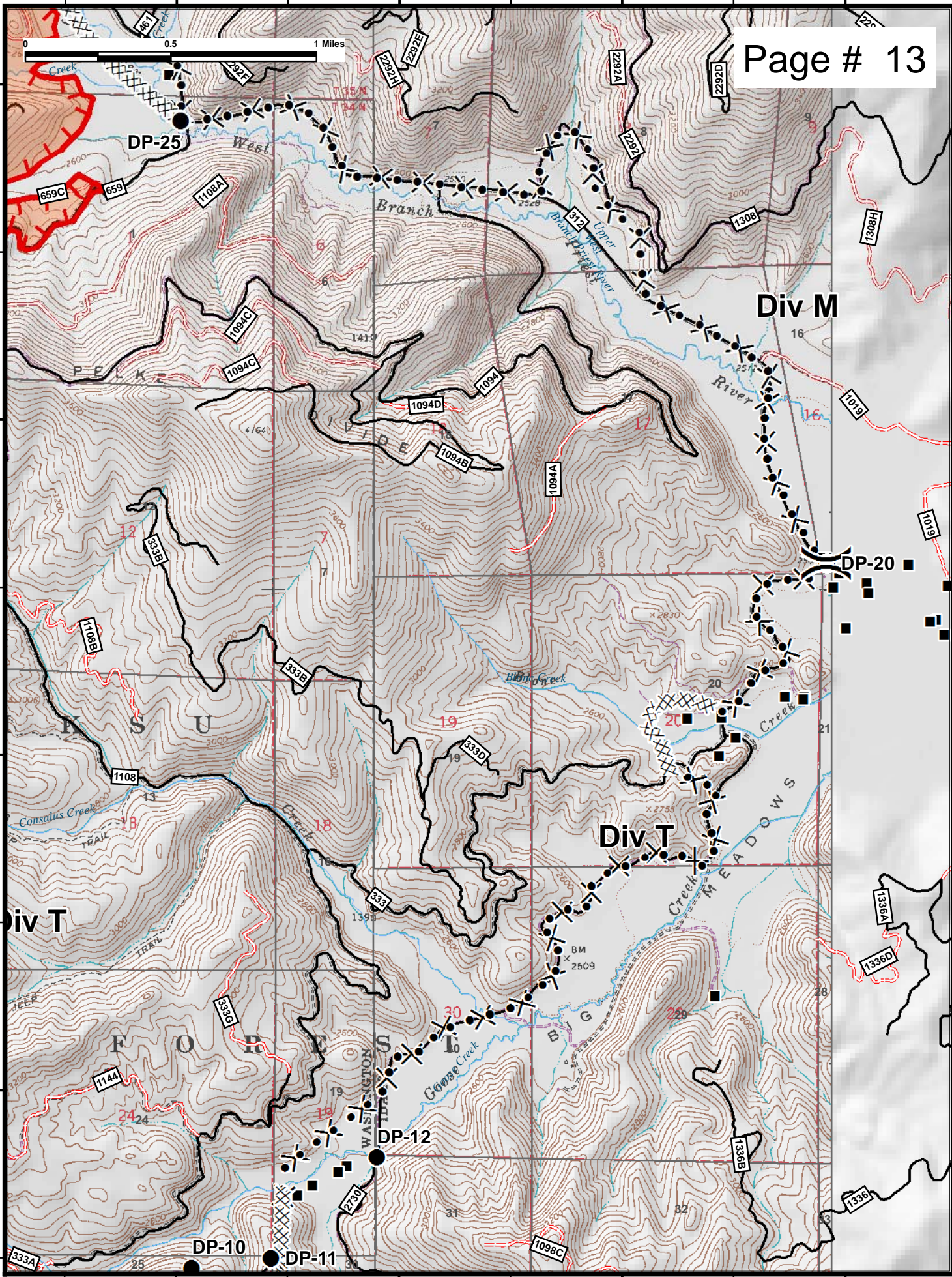
48°28'N

48°27'N

48°27'N

48°26'N

48°26'N



117°11'W

117°10'W

117°9'W

117°8'W

48°26'N

48°26'N

48°25'N

48°25'N

48°24'N

48°24'N

48°23'N

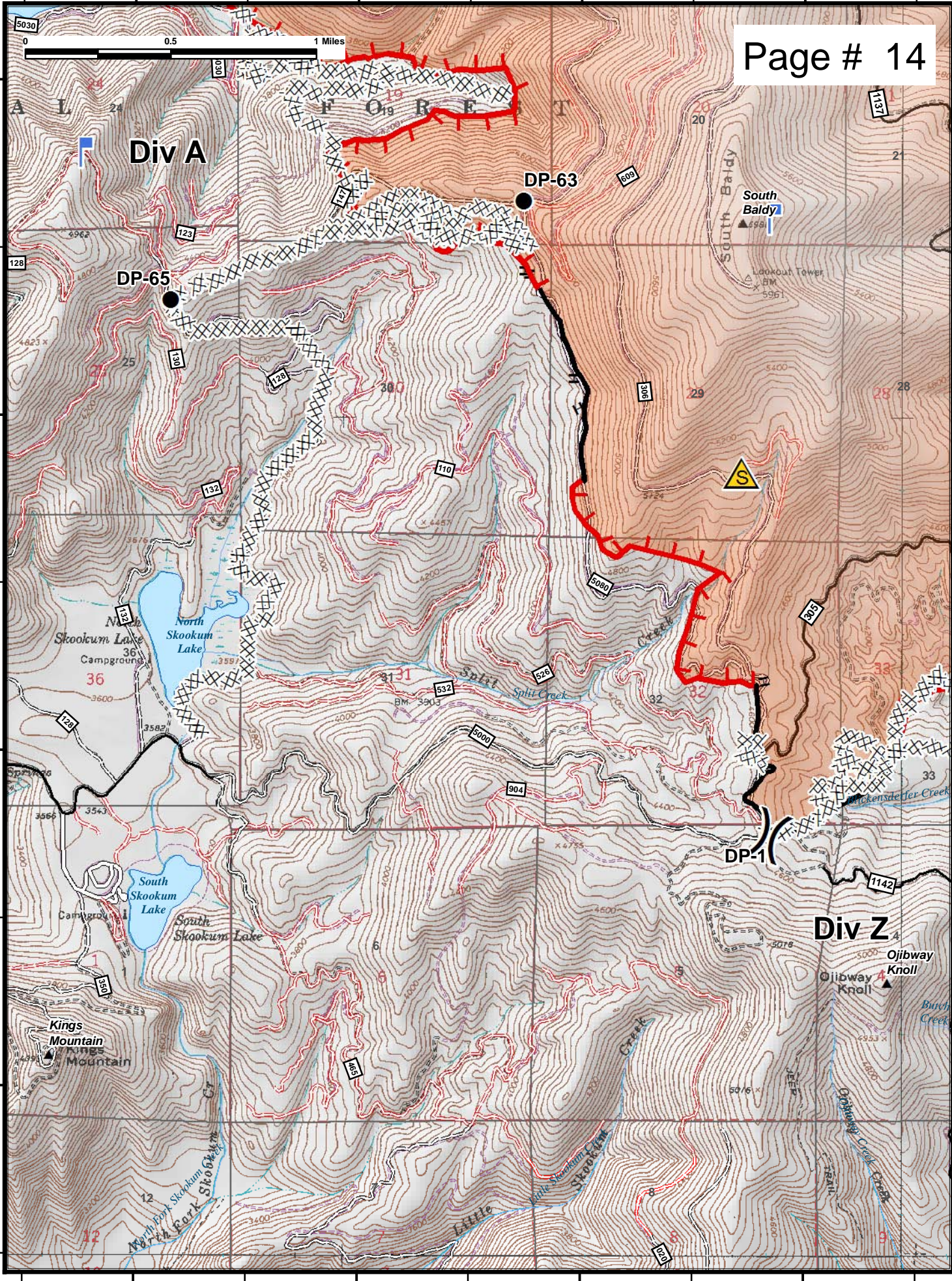
48°23'N

117°11'W

117°10'W

117°9'W

117°8'W



117°8'W

117°7'W

117°6'W

117°5'W

48°26'N

48°26'N

Page # 15

48°25'N

48°25'N

48°24'N

48°24'N

48°23'N

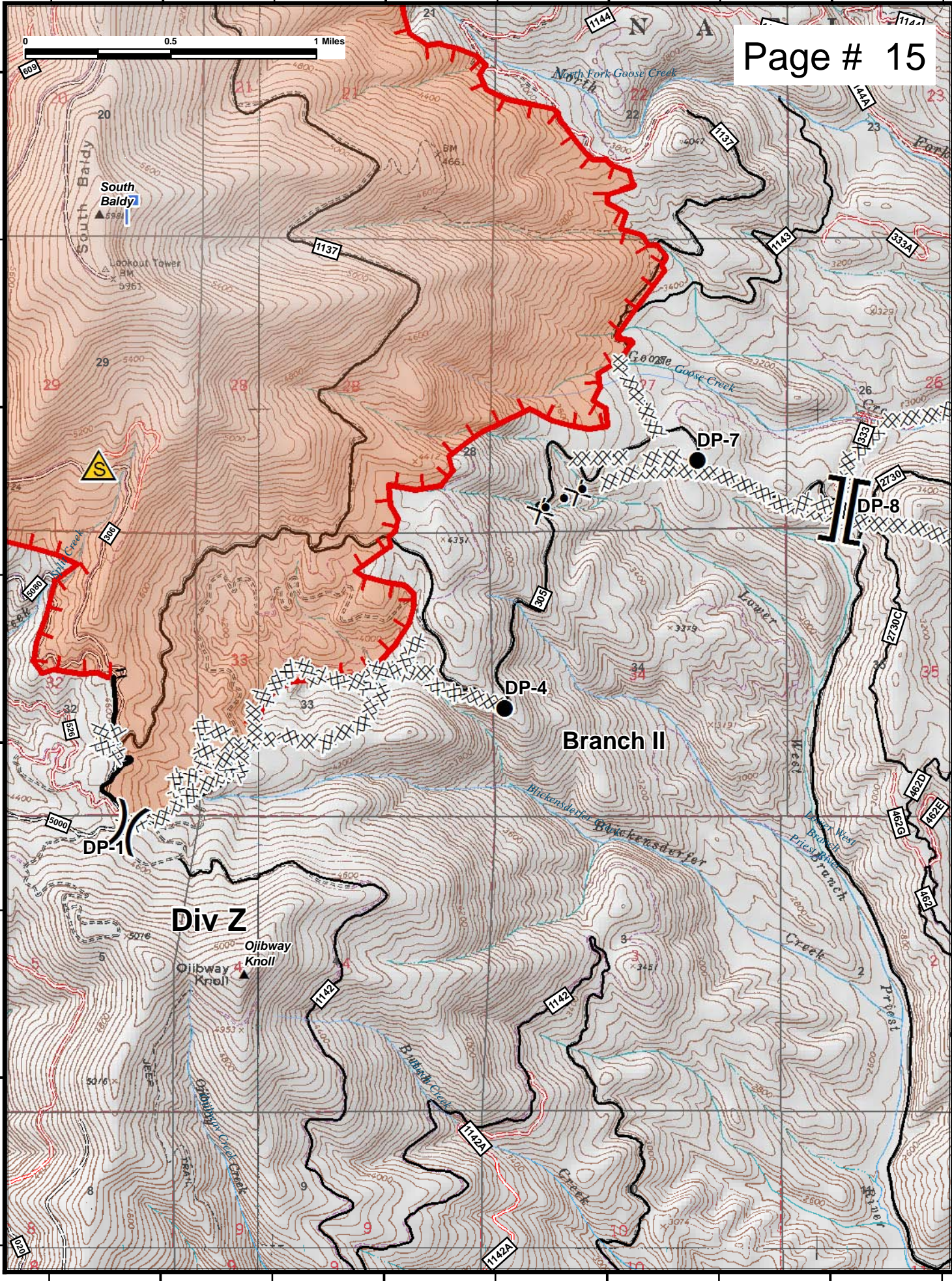
48°23'N

117°8'W

117°7'W

117°6'W

117°5'W

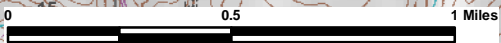


117°5'W

117°4'W

117°3'W

117°2'W



Div T

Page # 16

48°26'N

48°26'N

48°25'N

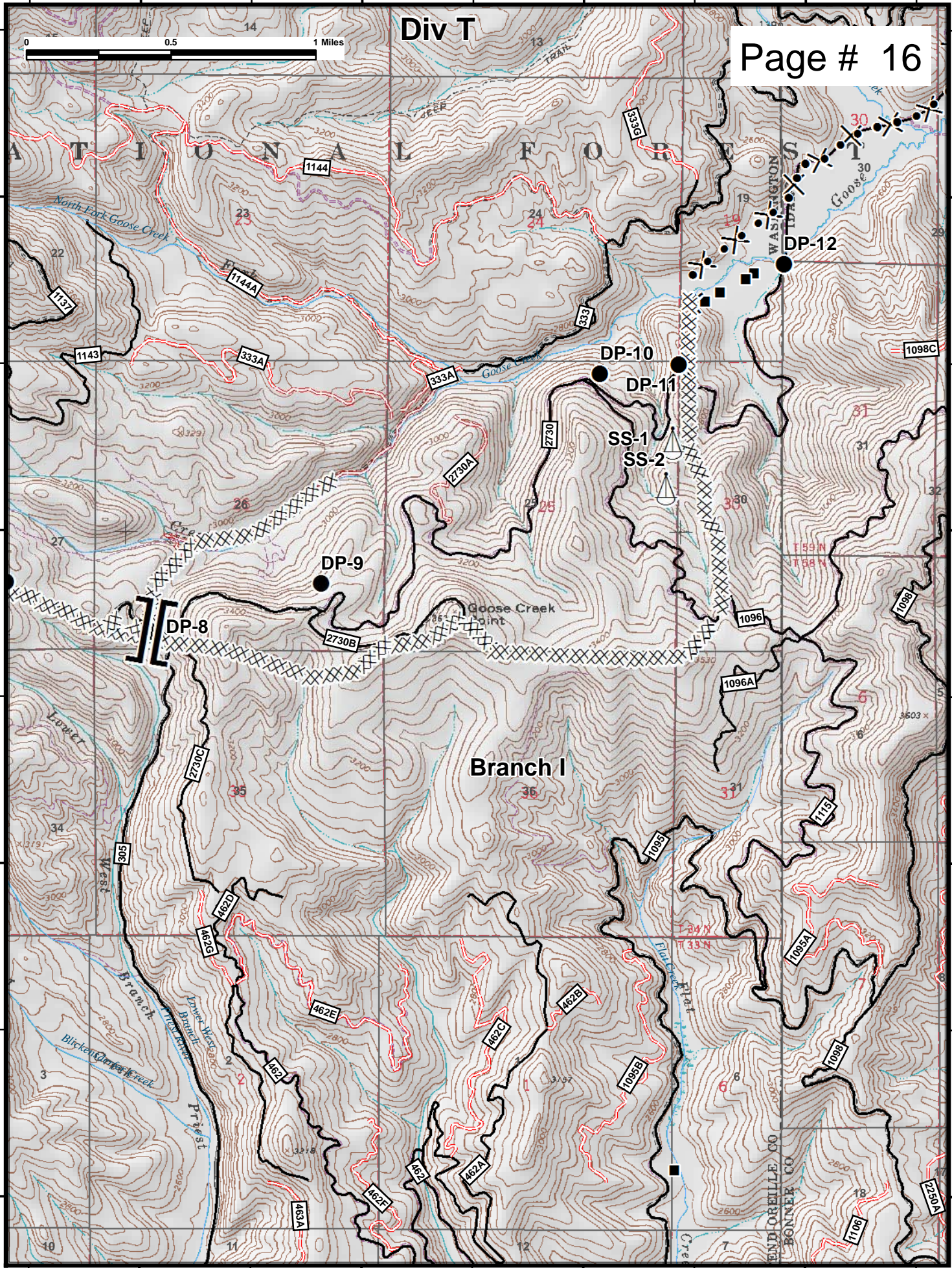
48°25'N

48°24'N

48°24'N

48°23'N

48°23'N



117°5'W

117°4'W

117°3'W

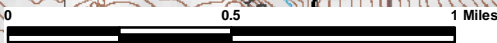
117°2'W

117°15'W

117°14'W

117°13'W

117°12'W



Page # 17

48°45'N

48°45'N

48°44'N

48°44'N

48°43'N

48°43'N

Div Onata

DP-101

DP-130

DP-120

DP-110

Branch III

Molybdenite

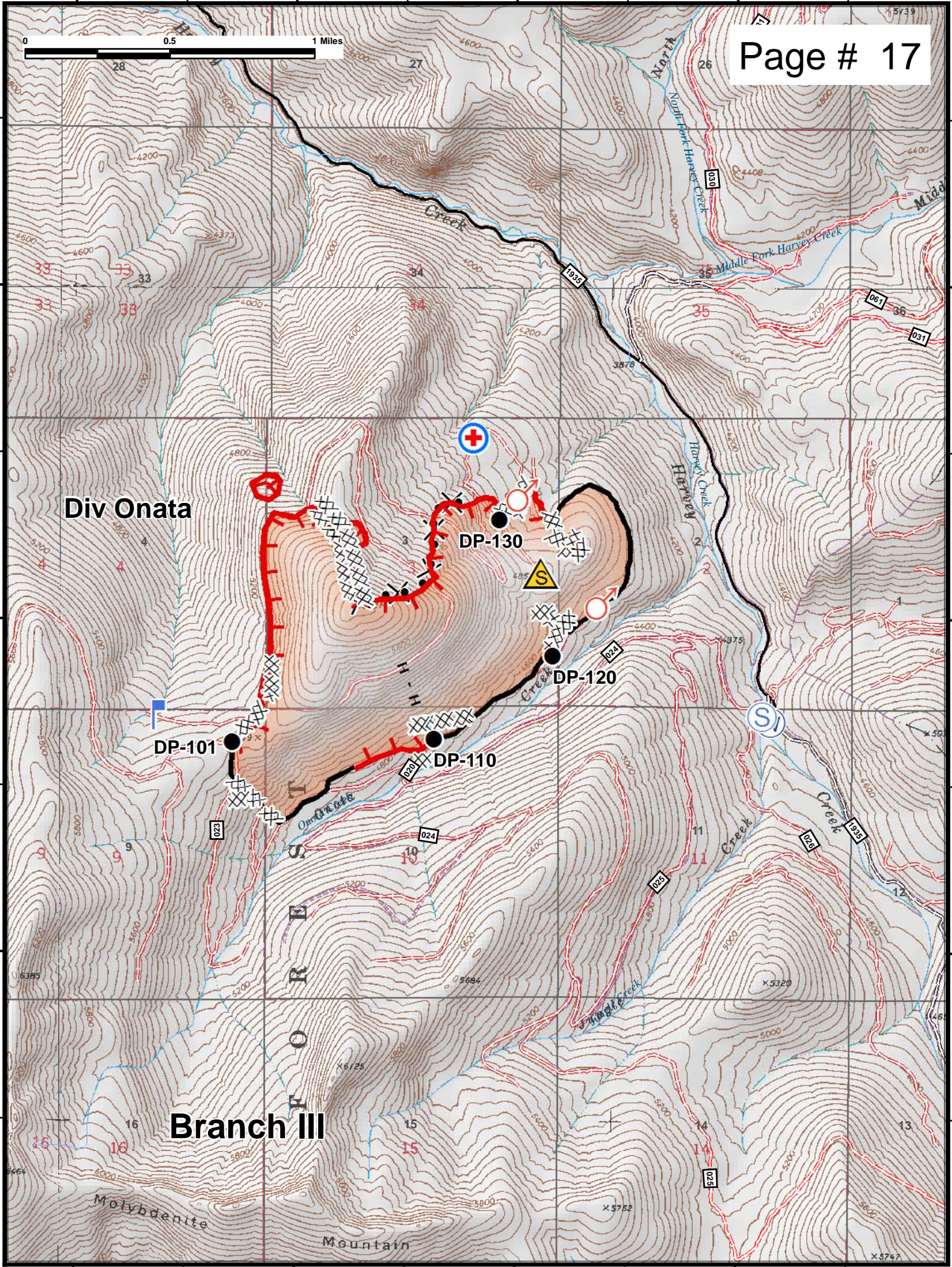
Mountain

117°15'W

117°14'W

117°13'W

117°12'W



117°14'W

117°13'W

117°12'W

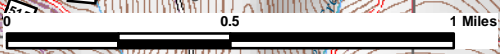
117°11'W

117°10'W

48°49'N

48°49'N

Page # 18



48°48'N

48°48'N

NATIONAL FOREST

48°47'N

48°47'N

Grease Creek

48°46'N

48°46'N

117°14'W

117°13'W

117°12'W

117°11'W

117°10'W

